



# DUNCAN BUILDING

315 2ND AVE S, SEATTLE, WA 98104

## CAVAN O'KEEFE

Senior Managing Director  
t 206-395-2903  
cavan.okeefe@nrmk.com

## TRACY TURNURE

Associate  
t 425.372.9923  
tracy.turnure@nrmk.com

# NEWMARK





# Building Highlights

- Skylights & windows provides abundant natural light
- Full HVAC, elevator, & building security system
- Brick walls & open beamed ceilings
- Located 2 blocks from Light Rail & Union Station
- Full floor tenancy offers security, control & identity



WALK SCORE

97



TRANSIT SCORE

100

# Availabilities

Floor 2

6,000 RSF

Available Now

FLOOR 2 VIRTUAL TOUR



# Floor 2

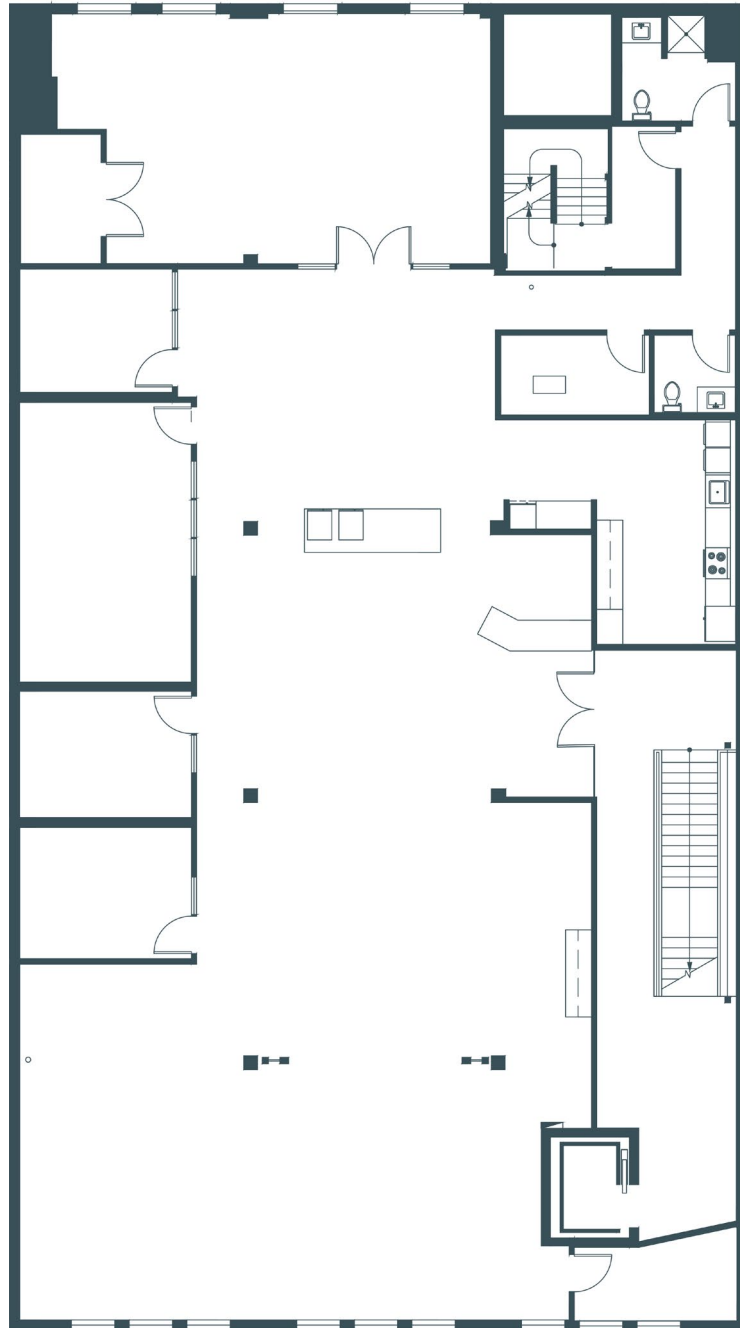
6,000 RSF

Available Now

FLOOR 2 VIRTUAL TOUR



2ND AVENUE S





# DUNCAN

## BUILDING

315 2ND AVE S, SEATTLE, WA 98104

---

### CAVAN O'KEEFE

*Senior Managing Director*  
t 206-395-2903  
cavan.okeefe@nmrk.com

### TRACY TURNURE

*Associate*  
t 425.372.9923  
tracy.turnure@nmrk.com

---

**NEWMARK**

The information contained herein has been obtained from sources deemed reliable but has not been verified and no guarantee, warranty or representation, either express or implied, is made with respect to such information. Terms of sale or lease and availability are subject to change or withdrawal without notice. 10/23