

# GORDON

COMMERCIAL REAL ESTATE BROKERAGE

LORI ROSENTHAL • 510 524-2344 lori@gordoncommercial.com • DRE# 01946676

## CHAPEL/SCHOOL BUILDING AND DINING HALL FOR LEASE

ON THE PACIFIC SCHOOL  
OF RELIGION CAMPUS

1798 SCENIC AVENUE  
BERKELEY, CA





## TWO ADJACENT BUILDINGS FOR LEASE ON THE PACIFIC SCHOOL OF RELIGION (PSR) CAMPUS

### PROPERTY OVERVIEW

- Adjoining PSR's tranquil grassy quad with access to outdoor space
- Buildings can be leased separately or together
- Potential to use additional PSR campus facilities
- Parking negotiable (monthly fee)
- 1 block to UC Berkeley; short walk to North Shattuck area, and Downtown Berkeley

**Total Size Available: ±15,372 rsf**

### PROPERTY FEATURES

#### Chapel/School Building: ±10,318 rsf

Total Building Occupancy: 350

First floor: ±5,733 rsf

- Includes large chapel, meditation room, lobby, and storage/office space
- Wheelchair lift
- ADA restroom
- Chapel has seating for 150

Basement: ±4,585 rsf

- Includes 2 large classrooms with abundant windows, and storage/office space
- Classrooms have carpet flooring, new lighting
- Largest classroom has seating for 50
- Smaller classroom has seating for 25
- ADA restroom
- Separate telcom/server room

#### Dining Hall: ±5,054 rsf

First floor: ±3,464 rsf

- Includes full kitchen with type 1 hood, cooking equipment, prep stations, washing area, 2 walk-ins, assorted storage areas
- Dining room with soaring ceilings, lots of windows, easy outdoor access
- ADA restroom

Basement: ±1,590 rsf

- Includes lounge/office or classroom space
- 1 private office
- Restroom



### PROXIMITY TO DOWNTOWN, NORTH SHATTUCK AND UC BERKELEY AMENITIES

With its tranquil atmosphere and breathtaking views of the Bay, the Pacific School of Religion's campus is uniquely located in the Berkeley Hills not far from the Rose Garden and Codornices Park. You'll find yourself surrounded by nature – yet within walking and biking distance of everything that Downtown Berkeley and Cal campus have to offer.

### HIGHLIGHTS

- Many cafés and eateries within 1-2 blocks
- .5 mile to Downtown Berkeley Arts District
- .7 mile to Downtown Berkeley BART and AC transit hub
- 1.5 miles to North Berkeley BART
- 4 blocks to Walnut Square and North Berkeley's famous culinary neighborhood – featuring destinations such as Chez Panisse, Cheeseboard Collective, and the original Peet's Coffee
- 1 block from UC Berkeley





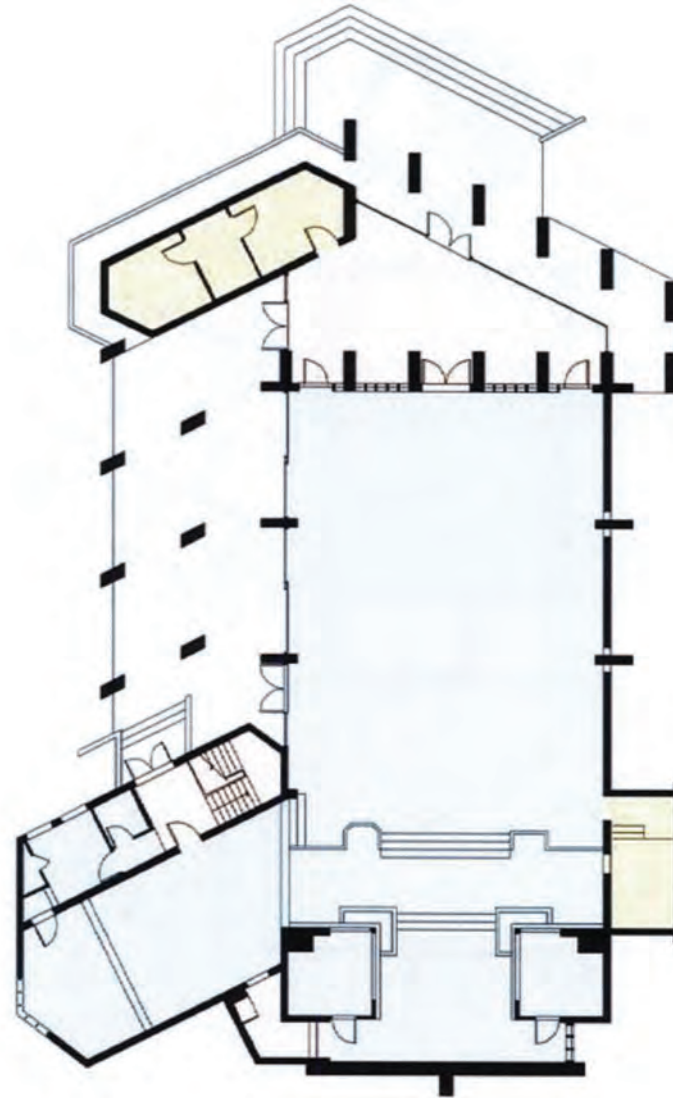
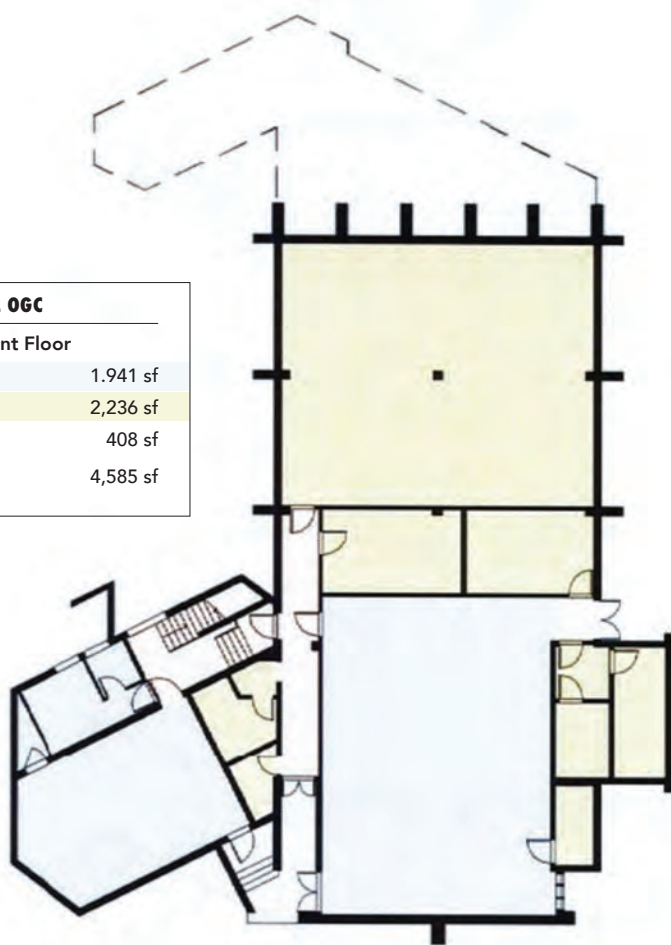
## NEIGHBORS

Pacific School of Religion is in the Northside district –the oldest residential neighborhood in the Berkeley Hills. The campus of the Pacific School of Religion is one of several seminaries in the neighborhood. The Graduate Theological Union and its various member schools, are clustered around the intersection of Le Conte Avenue, Scenic Avenue, and Ridge Road. Several other nearby schools include Zaytuna College, Jesuit School of Theology of Santa Clara University, Church Divinity School of the Pacific and the Orthodox Institute Graduate School. The UC Berkeley Student Coop Buildings are located on Ridge Road and the UC Berkeley Mechanical Engineering Department is located one block below, along Hearst Avenue. A wide variety of cafés and eateries are only 1-2 blocks away.



## FLOORPLAN - PSR CHAPEL

PSR CHAPEL OGC	
1st Basement Floor	
Habitable	1,941 sf
Service	2,236 sf
Circulation	408 sf
Total	4,585 sf



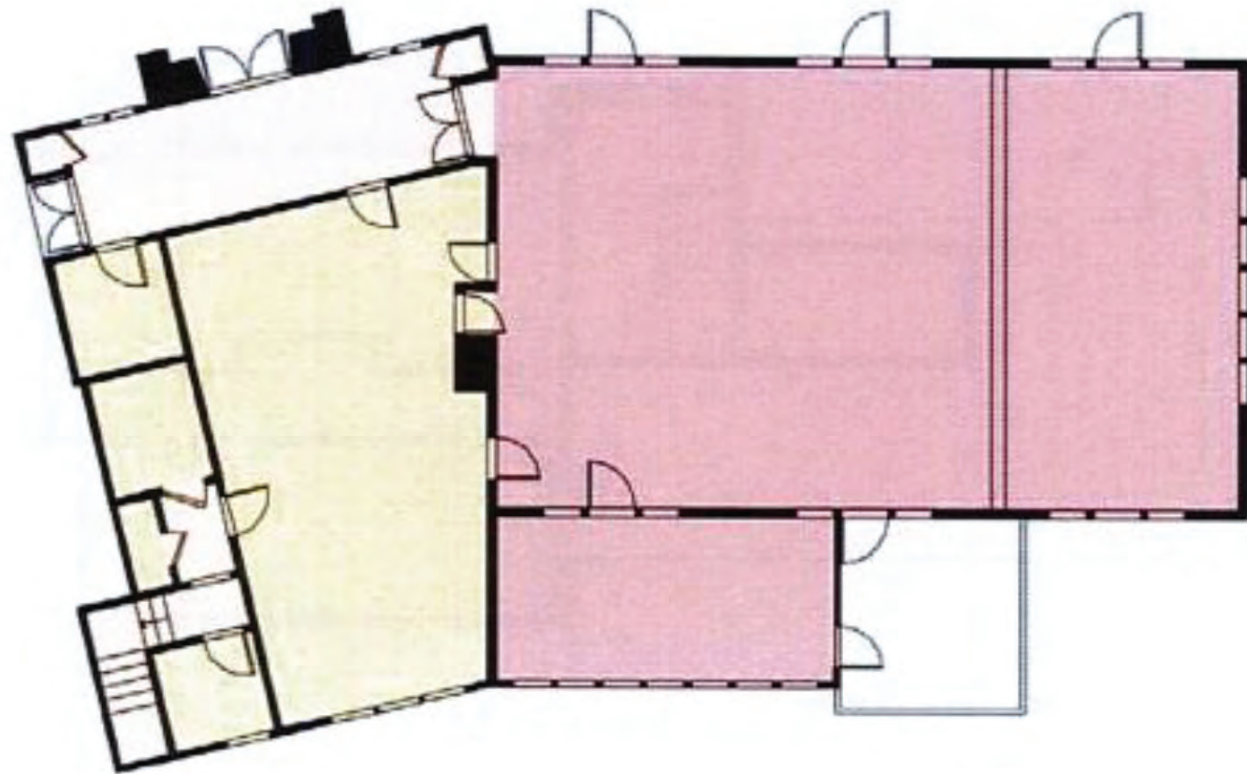
PSR CHAPEL OGC	
All Floors Total	
Habitable	6,227 sf
Service	2,764 sf
Circulation	1,327 sf
Total	10,318 sf

PSR CHAPEL OGC	
1st Floor	
Habitable	4,286 sf
Service	528 sf
Circulation	919 sf
Total	5,733 sf

This drawing is intended to be used as an aid for planning. Though care was taken in drawing this floor plan, accuracy is not guaranteed.

## FLOORPLAN – PSR DINING HALL

PSR DINING HALL	
All Floors Total	
Assembly	2,080 sf
Habitable	845 sf
Kitchen	869 sf
Service	726 sf
Circulation	534 sf
Total	5,054 sf
PSR DINING HALL	
1st Floor	
Assembly	2,080 sf
Kitchen	869 sf
Service	99 sf
Circulation	416 sf
Total	3,464 sf



This drawing is intended to be used as an aid for planning. Though care was taken in drawing this floor plan, accuracy is not guaranteed.

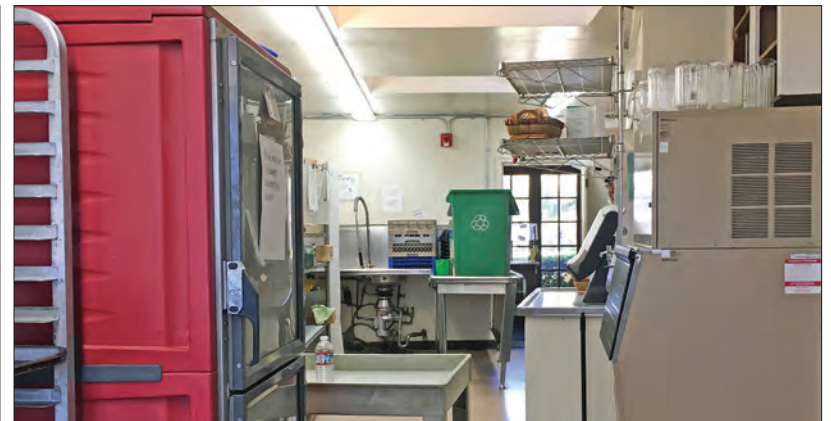
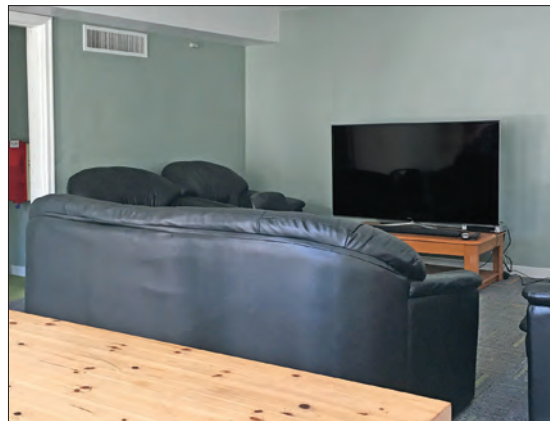


## PHOTO TOUR: CHAPEL/SCHOOL BUILDING





## PHOTO TOUR: DINING HALL





## ABOUT THIS CAMPUS

The Pacific School of Religion (PSR) campus is located in a quiet park-like setting of North Berkeley. From atop “Holy Hill” in Berkeley, California, the Pacific School of Religion is steeped in the history, community, and culture of the San Francisco Bay Area. Founded in 1866, PSR is a non-profit and a member of the Graduate Theological Union (GTU) – the largest and most diverse religious consortium of seminaries and institutes in the world. Through graduate level and innovative leadership programs, PSR prepares a diverse cadre of visionary leaders.

Recently, PSR has been designated as a Changemaker Campus by Ashoka University for being a leader in social innovation education, joining a dynamic global network of 40 colleges and universities from around the world, including Brown University, Duke University, Dublin City University and the University of Maryland.



The information contained herein has been provided by the owner of the property or other sources we deem reliable. We have no reason to doubt its accuracy, but we cannot guarantee it. All information should be verified prior to leasing.