

1300 N. Vermont Ave, Los Angeles, CA 90027

**Hollywood Presbyterian
Medical Center
- FOR LEASE**



*Mark Hong
BRE 01067529
Tel (213) 251-9000
markhong@korusre.com*

The information above has been obtained from sources believed reliable. While we do not doubt its accuracy, we have not verified it and make no guarantee, warranty or representation about it. It is your responsibility to independently confirm its accuracy and completeness.



FOUNTAIN AVE
N VERMONT AVE

HOLLYWOOD BLVD

Subject Property



HOLLYWOOD BLVD

Subject Property

FOUNTAIN AVE

N VERMONT AVE



Property Information

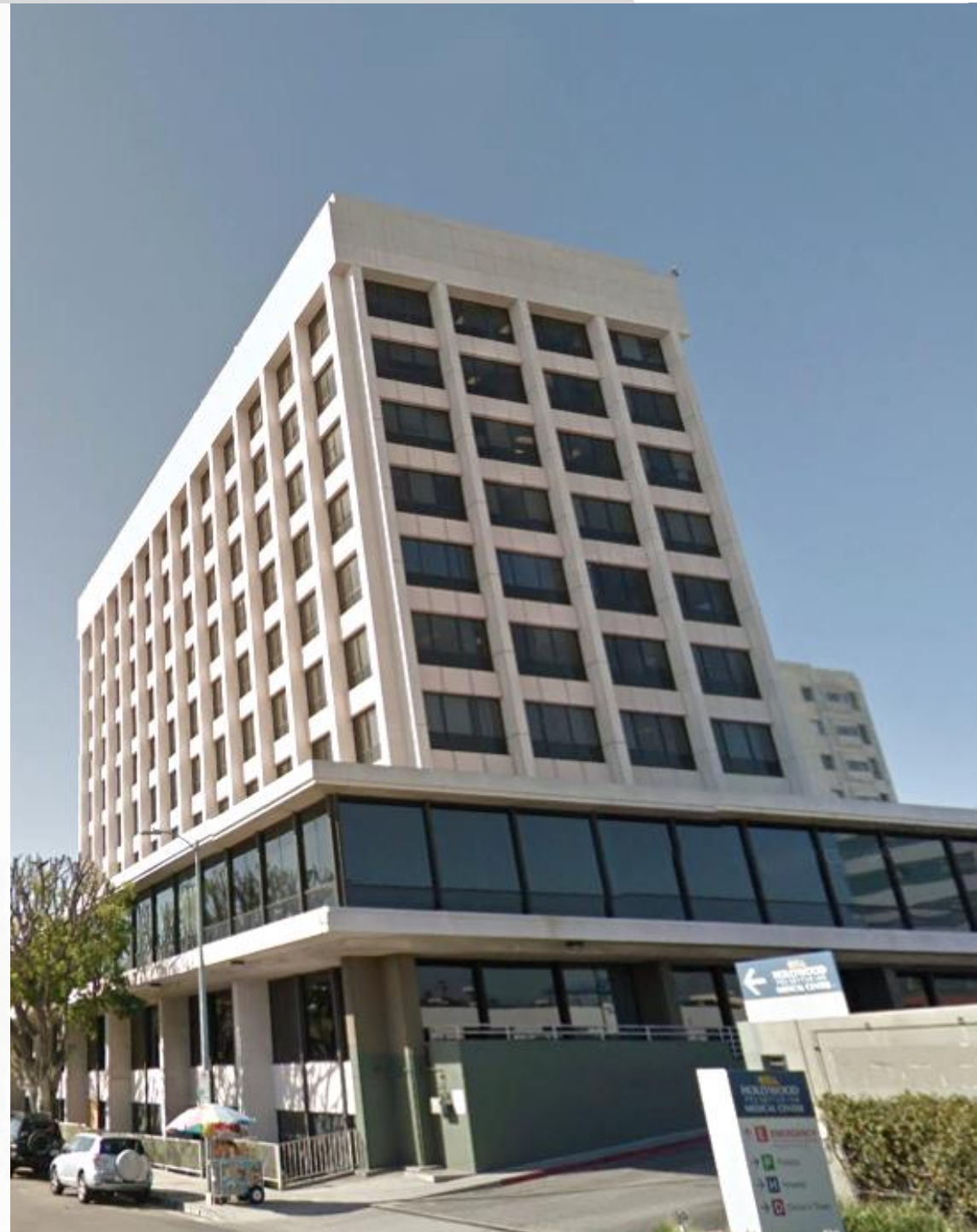
- Address:** 1300 N. Vermont Ave
Los Angeles, CA 90027
- Building Size:** +82,903 sq. ft.
- Lease Rate:** \$2.50 per sq. ft. (Full Service Gross)
- Availability:** Fifth Floor: 852 sq. ft.
Sixth Floor: 1,760 – 2,211 sq. ft.
Tenth Floor: 2,597 sq. ft.
- Parking Space:** +948 parking spaces

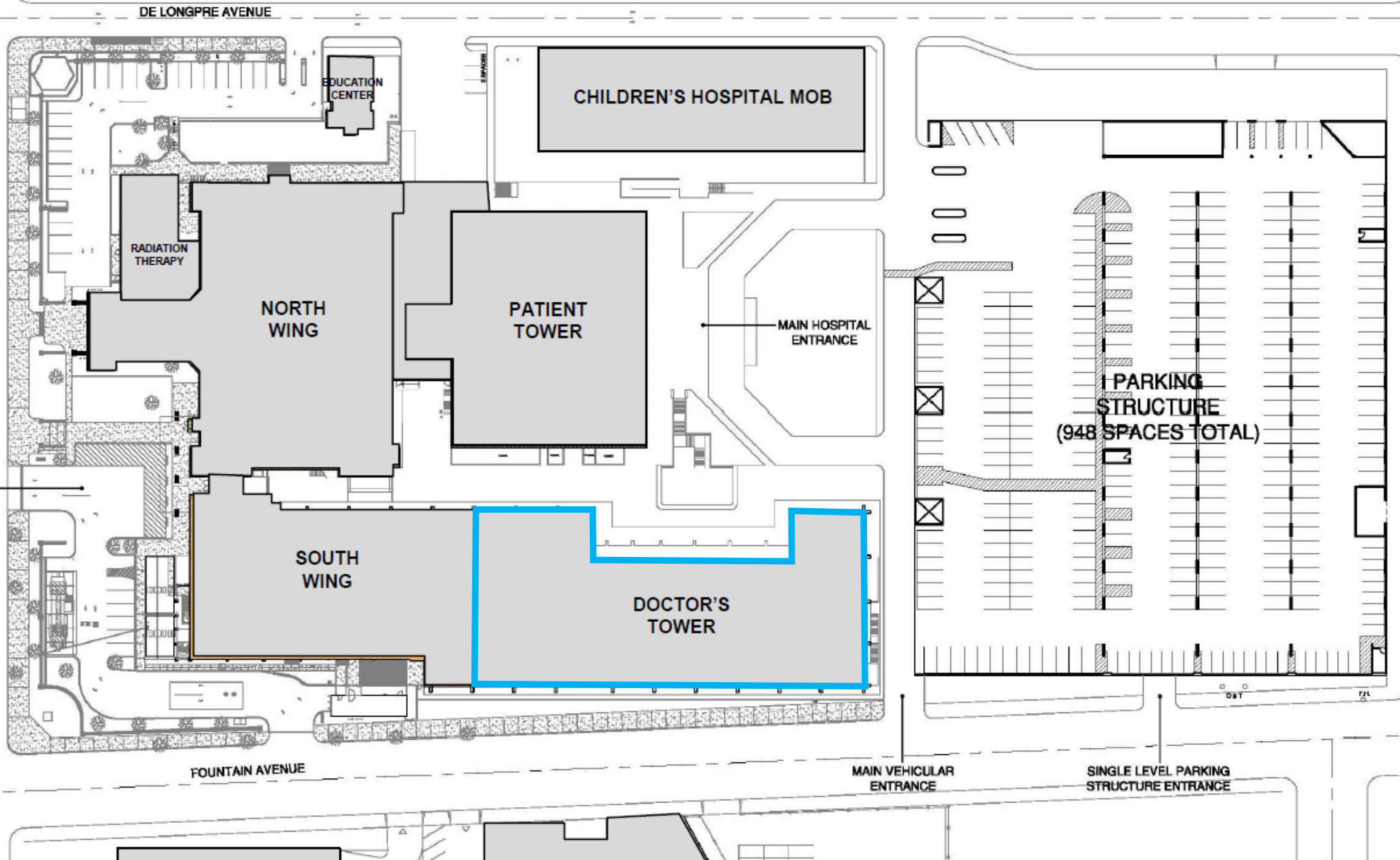
Property Highlights

- Hollywood Presbyterian Medical Center
- Improved medical office suites
- Adjacent to Hollywood Presbyterian Medical Center and walking distance to Children’s Hospital, and Kaiser.
- Convenient on-site parking

Demographics

	1 Mile Radius	3 Mile Radius	5 Mile Radius
2017 Total Population	69,348	481,861	1,096,116
2017 Households	28,760	192,672	433,903
% Population Growth 2017-2022	2.05%	3.46%	3.21%
% Household Growth 2017-2022	1.88%	3.28%	3.21%
2017 Average Household Income	\$42,138	\$40,772	\$43,502





Fifth Floor Plan

Availability

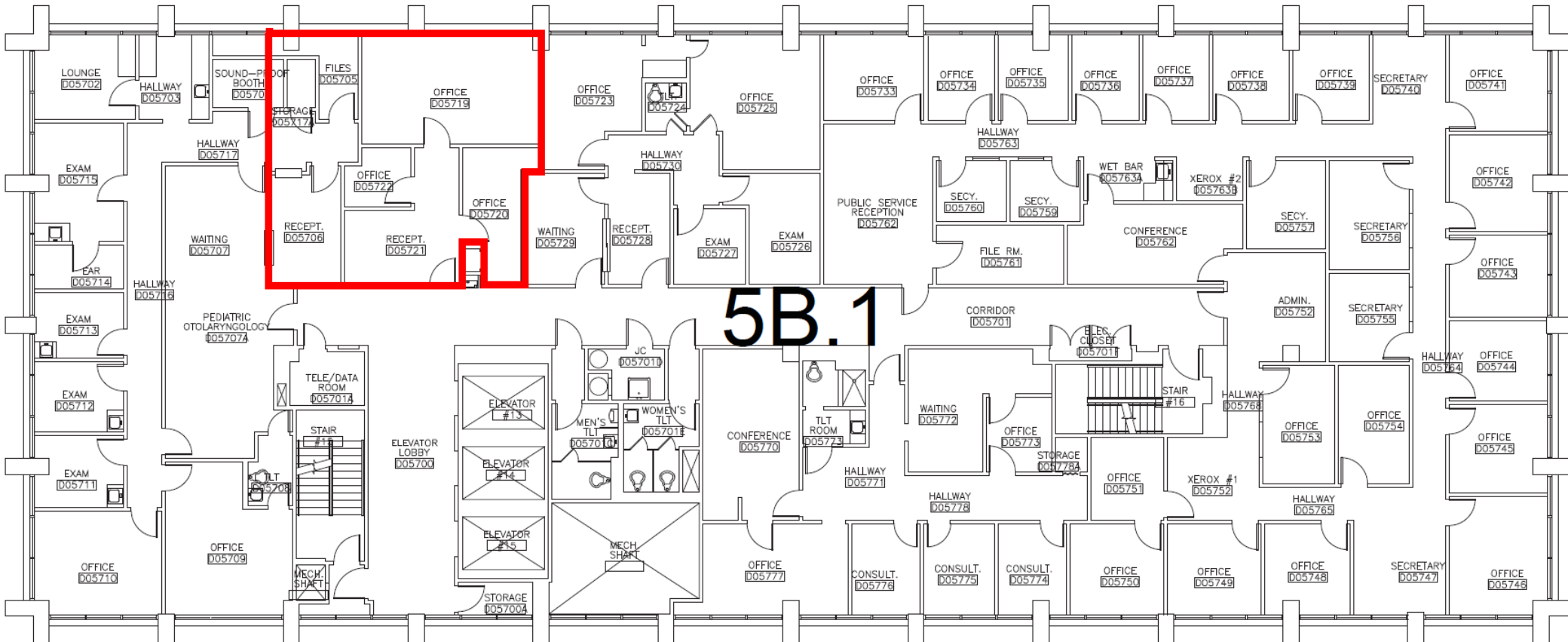
Suite

Size





502

852 sq. ft.

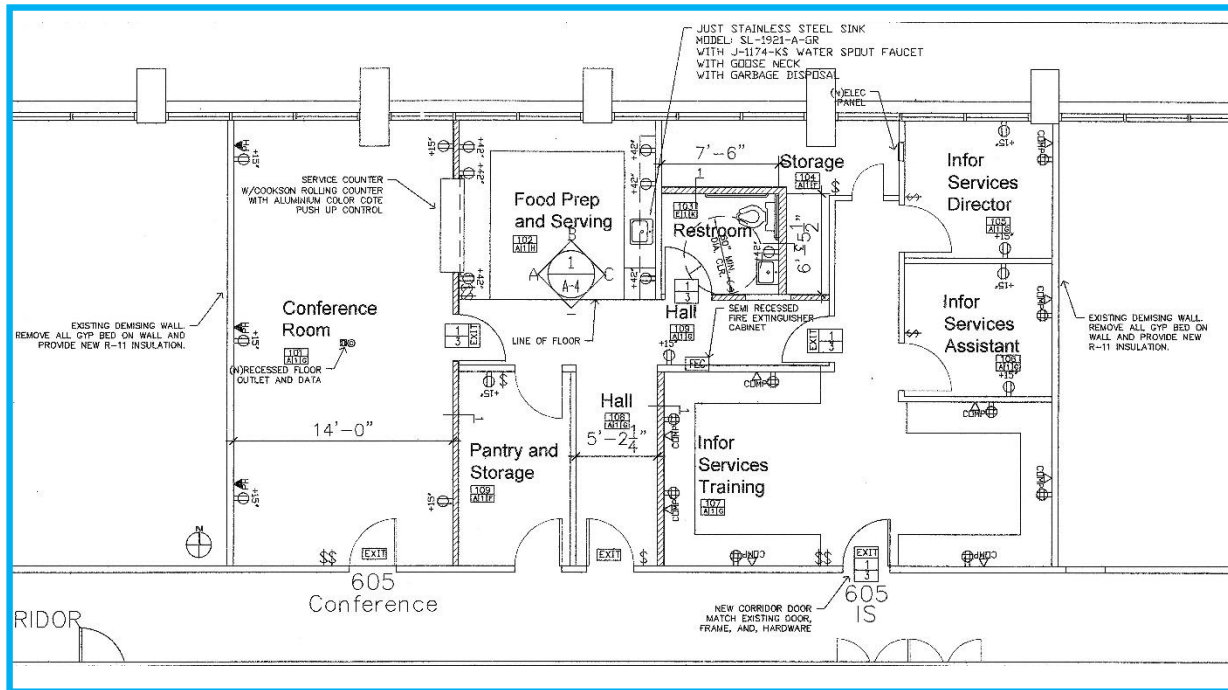


Sixth Floor Plan

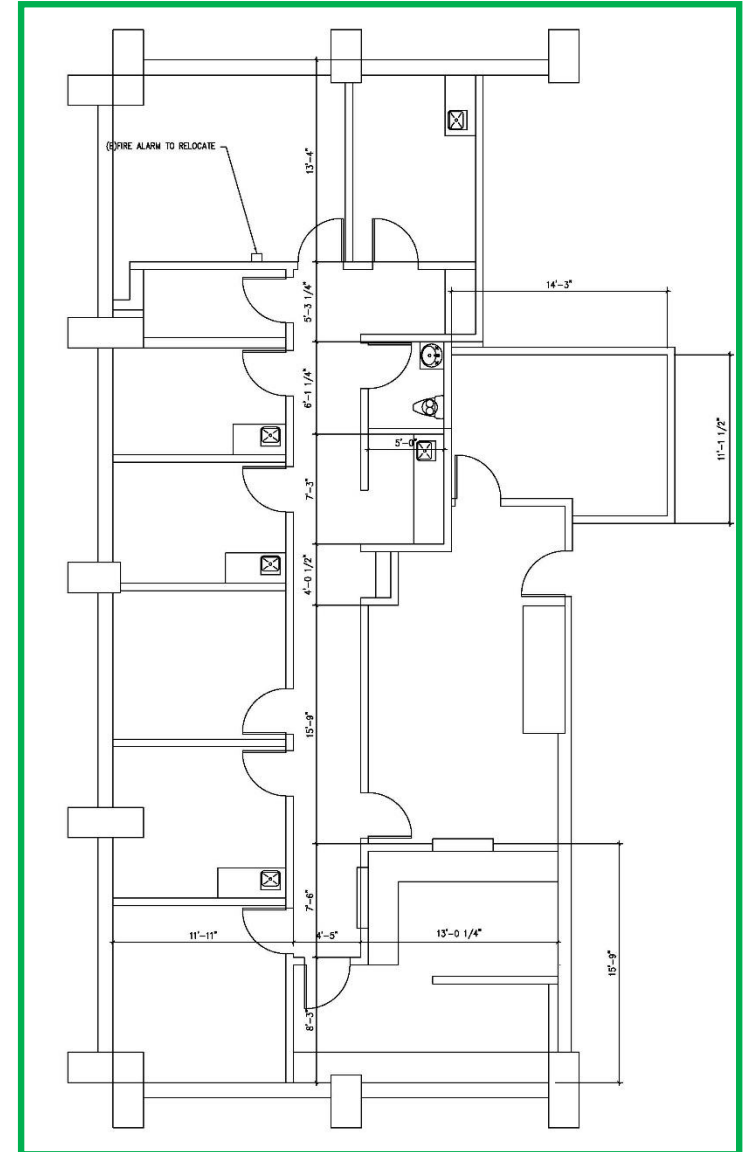
Availability

	Suite	Size
	600	2,211
	605	1,760

Suite 605



Suite 600



Tenth Floor Plan

Availability

Suite	Size
1000	2,597

