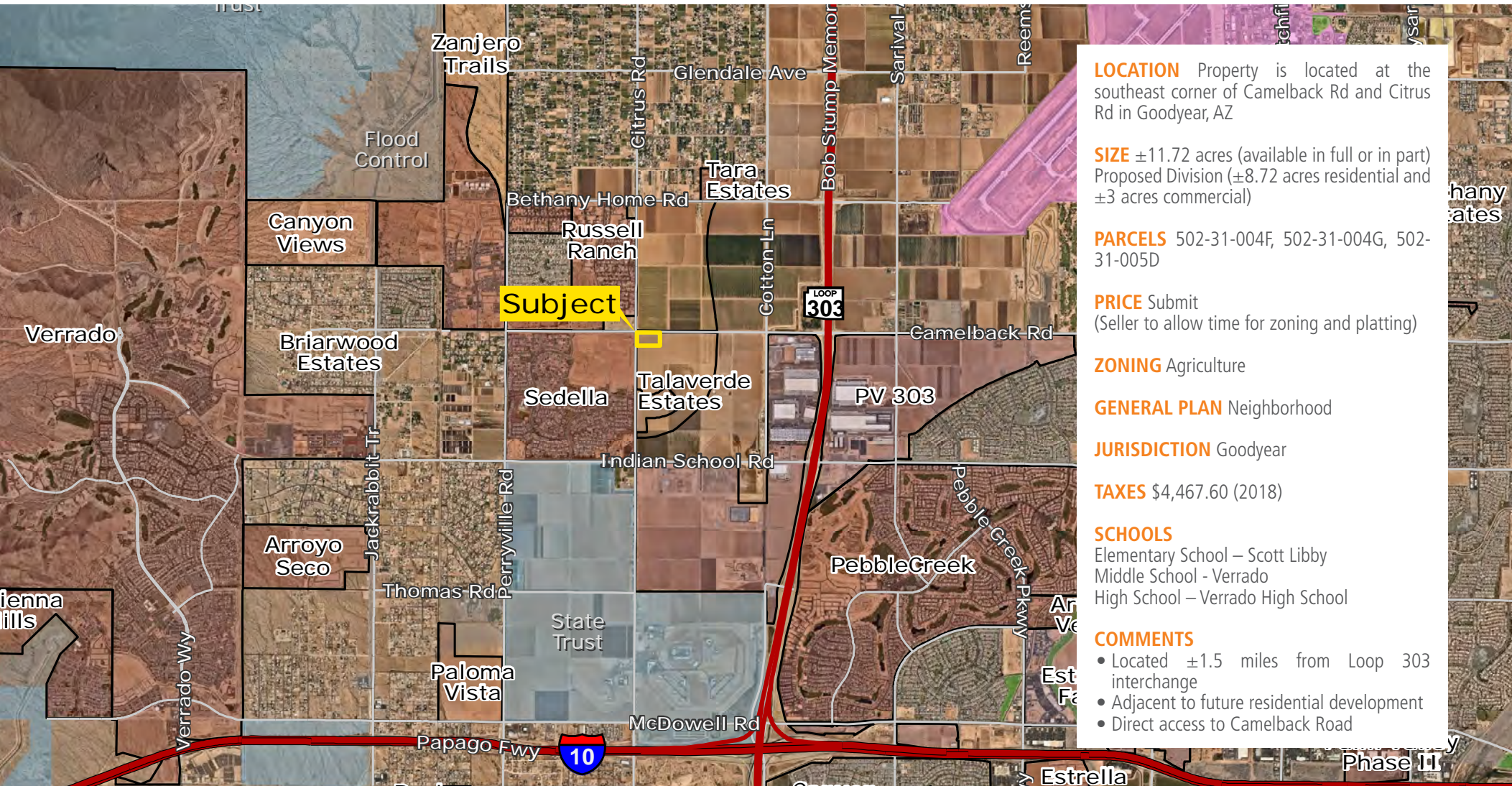


# SEC CITRUS ROAD & CAMELBACK ROAD

EXCLUSIVE LISTING | GOODYEAR, ARIZONA



**LOCATION** Property is located at the southeast corner of Camelback Rd and Citrus Rd in Goodyear, AZ

**SIZE** ±11.72 acres (available in full or in part) Proposed Division (±8.72 acres residential and ±3 acres commercial)

**PARCELS** 502-31-004F, 502-31-004G, 502-31-005D

**PRICE** Submit (Seller to allow time for zoning and platting)

**ZONING** Agriculture

**GENERAL PLAN** Neighborhood

**JURISDICTION** Goodyear

**TAXES** \$4,467.60 (2018)

**SCHOOLS**

Elementary School – Scott Libby  
Middle School - Verrado  
High School – Verrado High School

**COMMENTS**

- Located ±1.5 miles from Loop 303 interchange
- Adjacent to future residential development
- Direct access to Camelback Road

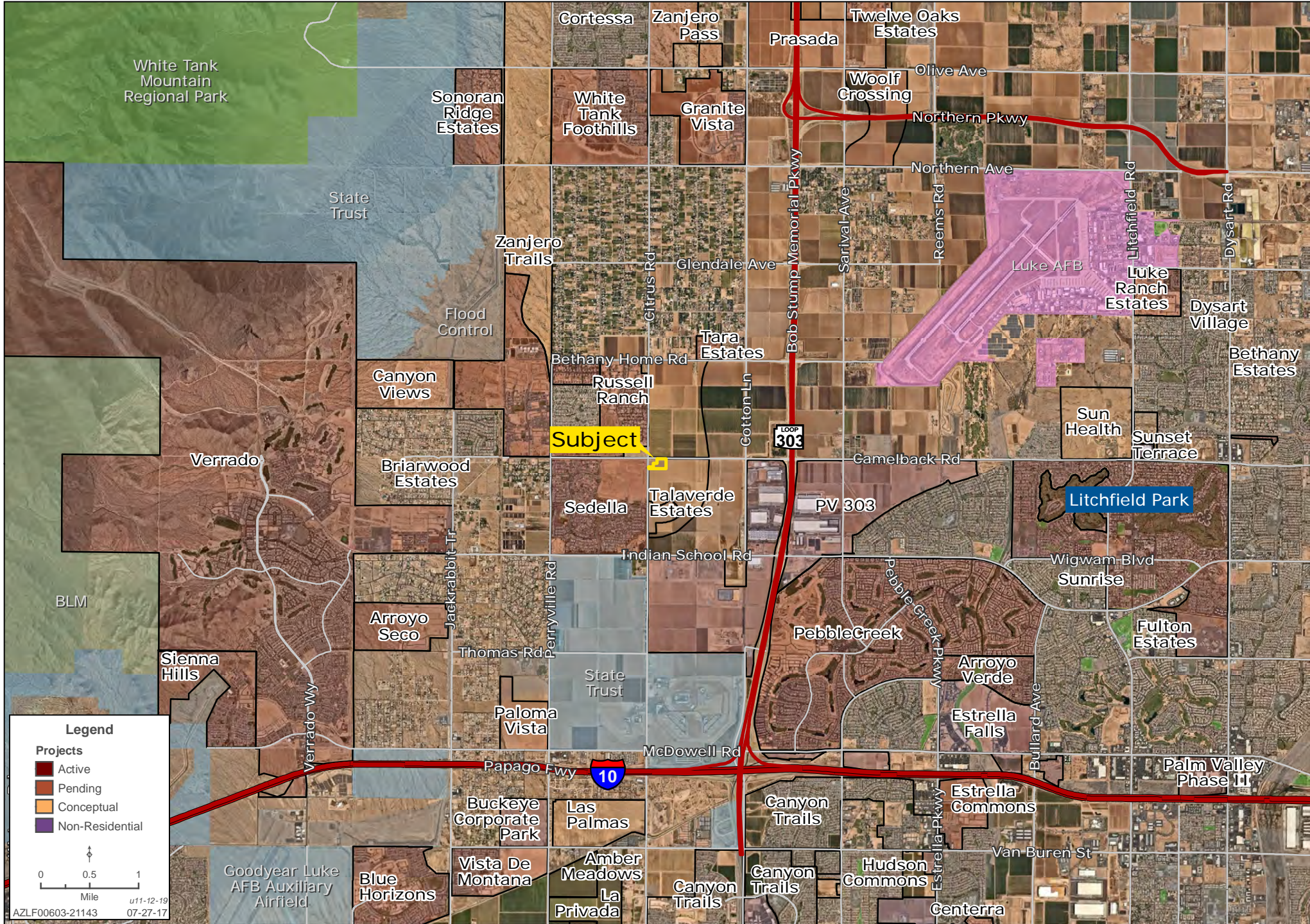
Greg Vogel | gvogel@landadvisors.com Wes Campbell | wcampbell@landadvisors.com  
4900 North Scottsdale Road, Suite 3000, Scottsdale, Arizona 85251 ph. 480.483.8100 | www.landadvisors.com

The information contained herein is from sources deemed reliable. We have no reason to doubt its accuracy but do not guarantee it. It is the responsibility of the person reviewing this information to independently verify it. This package is subject to change, prior sale or complete withdrawal. AZLF00603 - 11.12.2019



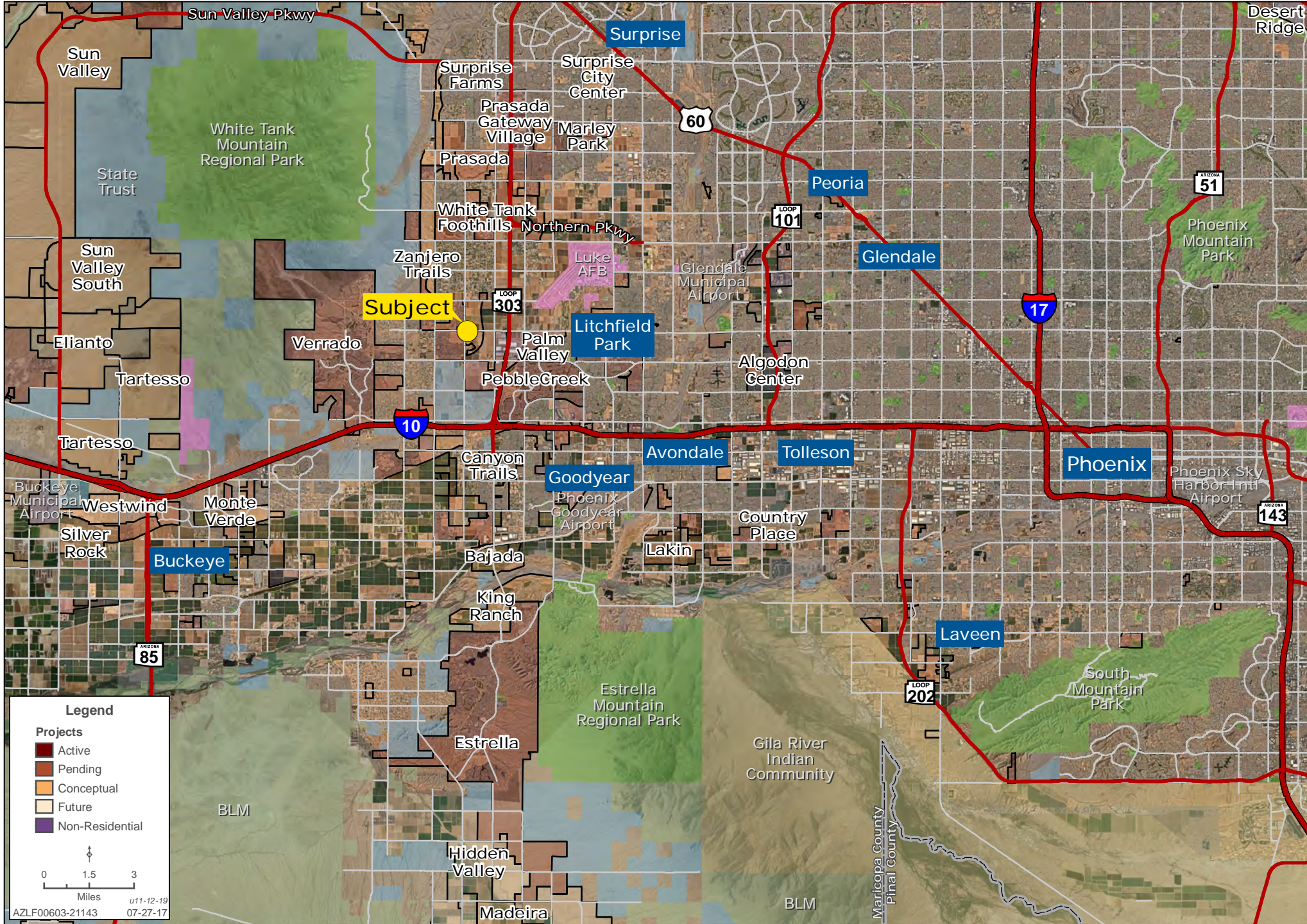
# SEC CAMELBACK RD AND CITRUS RD SURROUNDING DEVELOPMENT MAP

Greg Vogel | 480.483.8100 | www.landadvisors.com



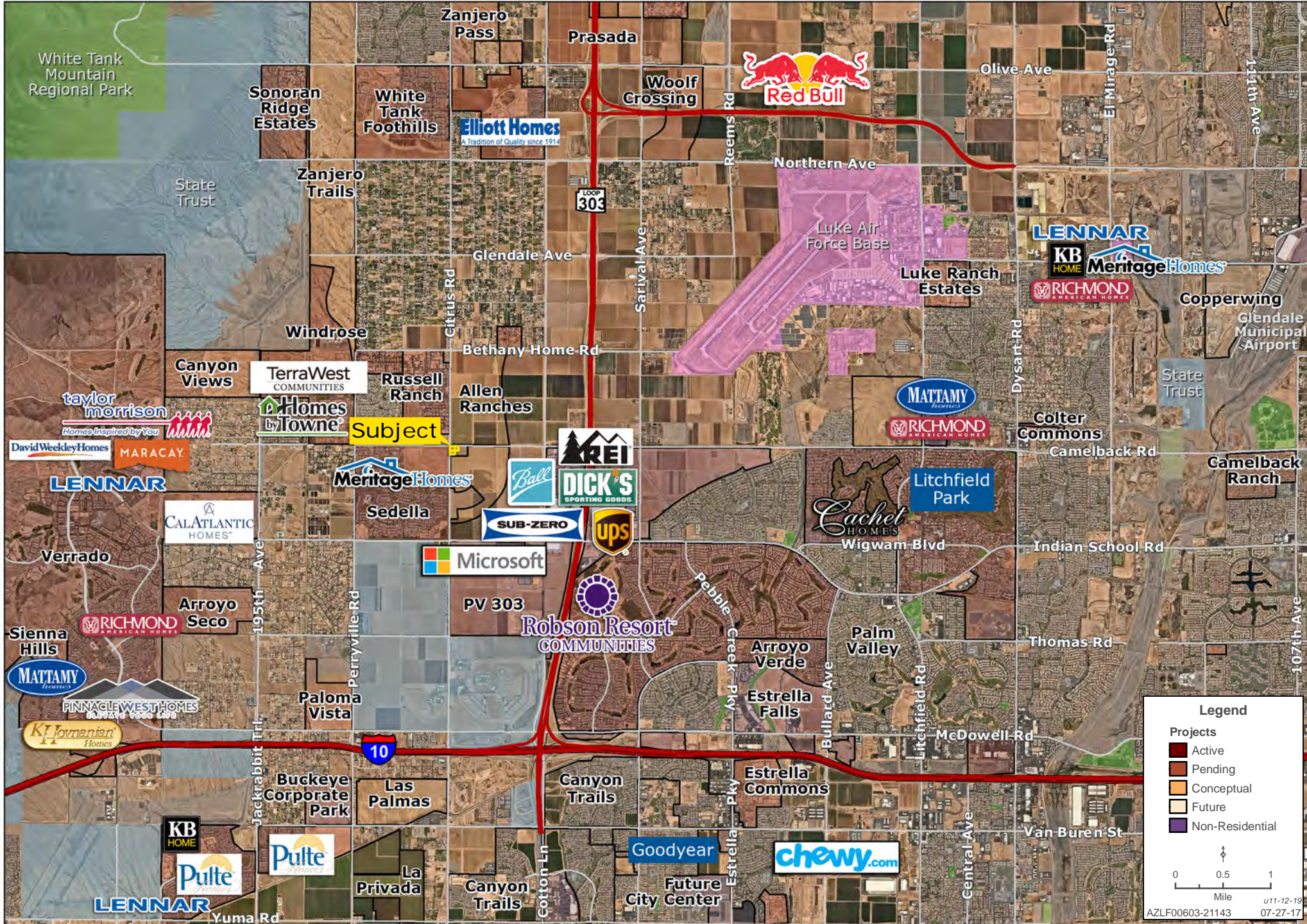
# SEC CAMELBACK RD AND CITRUS RD REGIONAL MAP

Greg Vogel | 480.483.8100 | www.landadvisors.com



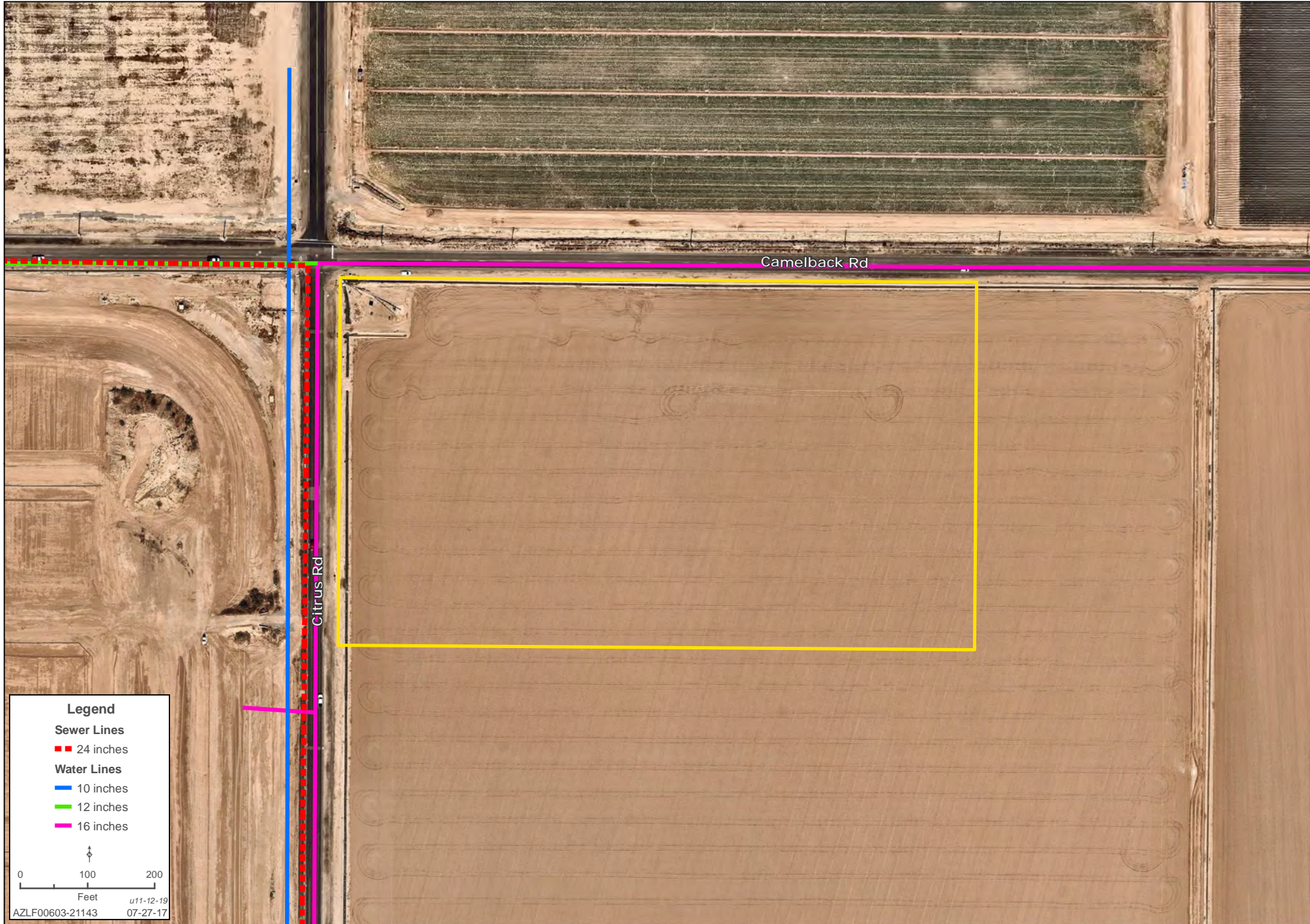
# SEC CAMELBACK RD AND CITRUS RD SURROUNDING USERS MAP

Greg Vogel | 480.483.8100 | www.landadvisors.com



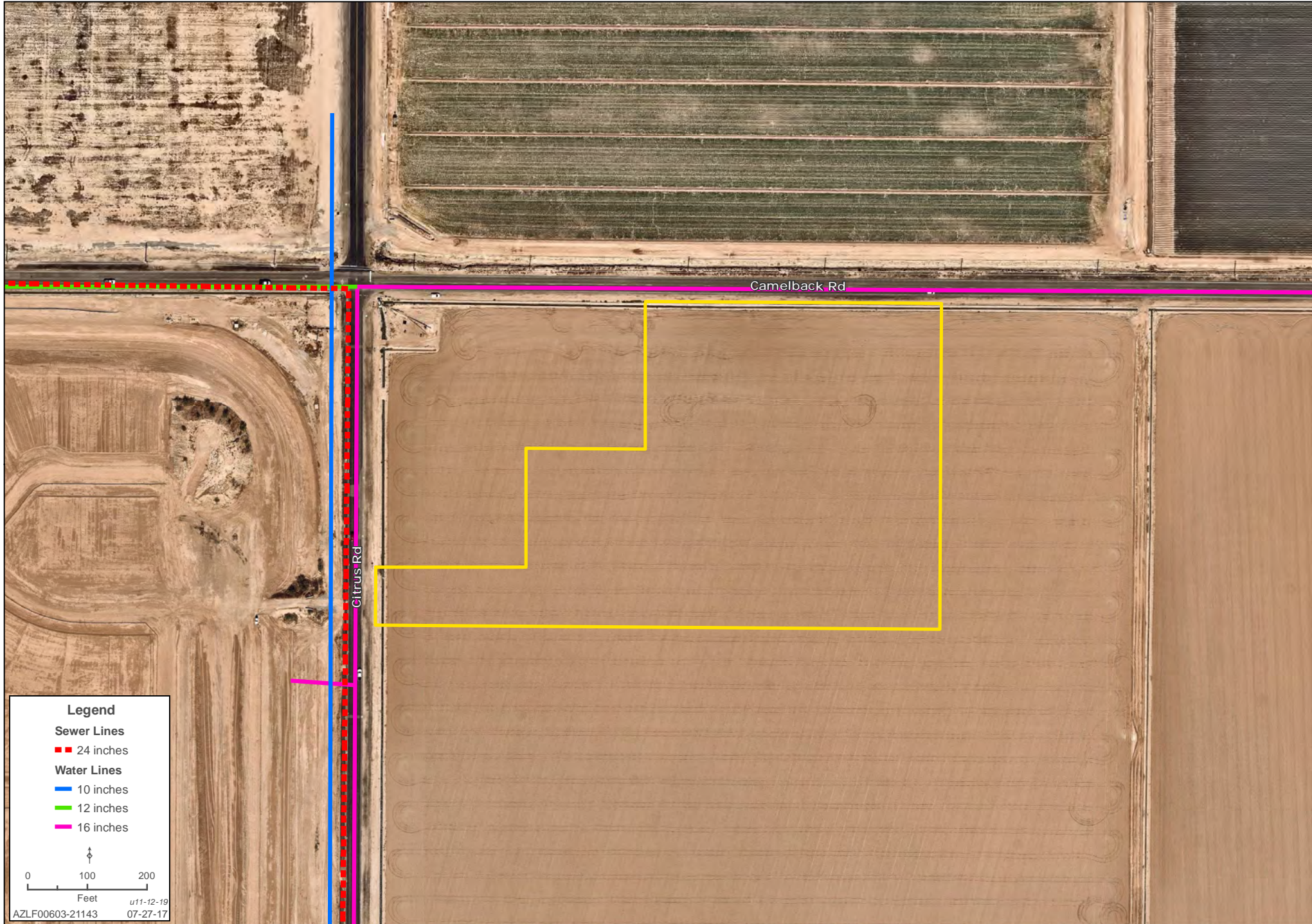
# SEC CAMELBACK RD AND CITRUS RD PROPERTY DETAIL MAP

Greg Vogel | 480.483.8100 | www.landadvisors.com



# SEC CAMELBACK RD AND CITRUS RD PROPERTY DETAIL MAP

Greg Vogel | 480.483.8100 | www.landadvisors.com



# SEC CAMELBACK RD AND CITRUS RD PROPERTY DETAIL MAP

Greg Vogel | 480.483.8100 | www.landadvisors.com

