

Triangle Corporate Park III



KBS | Realty
Advisors

Office Space For Lease

Located near the I-5 & Hwy 217 junction, Tigard Triangle Corporate Park III is a 2012 EPA ENERGY STAR® certified, distinctive Class A office property with superb visibility

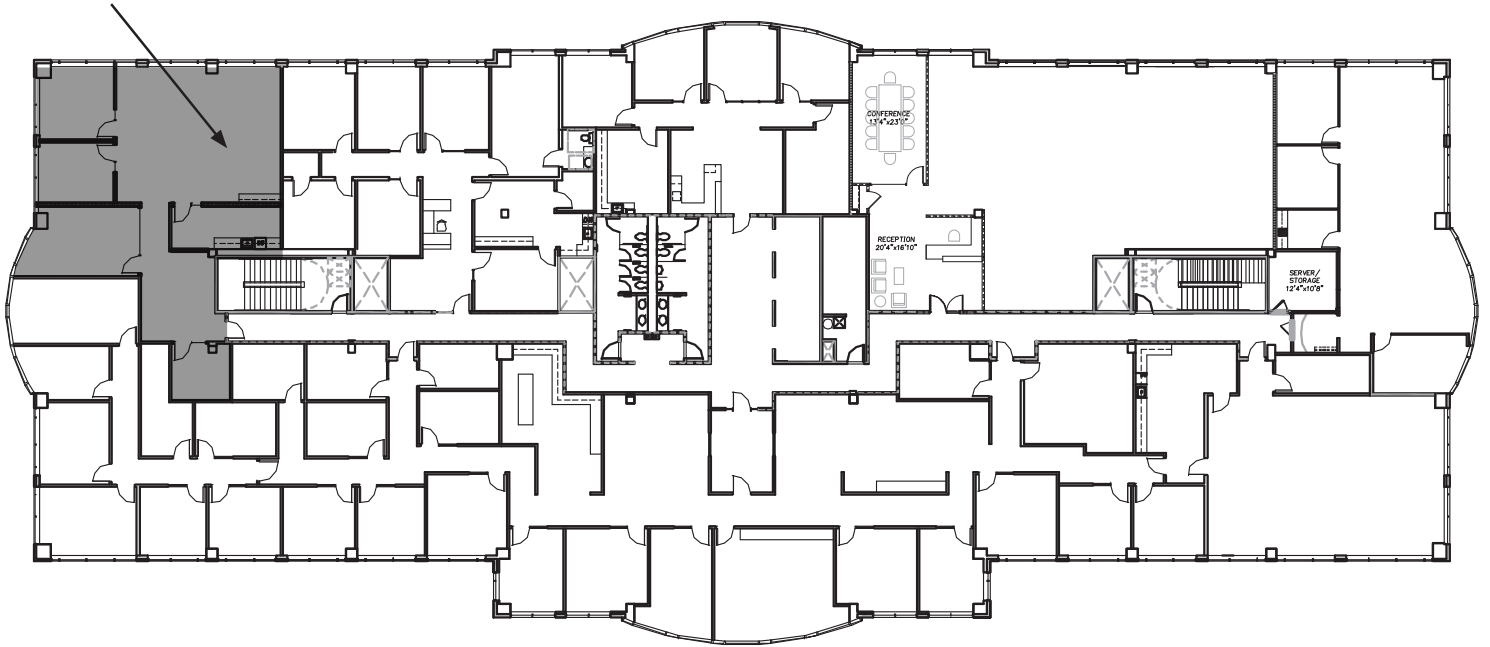


4TH FLOOR

Suite 450

2,410 RSF

Suite 450





PROPERTY HIGHLIGHTS:

- U.S. EPA 2012 Energy Star® Certified Building
- Excellent visibility from I-5
- 4/1,000 parking
- Showers
- Basketball court
- Excellent access to nearby restaurants, coffee shops, and other retail necessities
- RATE: \$26.00/RSF Full Service Gross

AVAILABILITIES:

Suite 450 - 2,410 RSF

© 2015 CBRE, Inc. This information has been obtained from sources believed reliable. We have not verified it and make no guarantee, warranty or representation about it. Any projections, opinions, assumptions or estimates used are for example only and do not represent the current or future performance of the property. You and your advisors should conduct a careful, independent investigation of the property to determine to your satisfaction the suitability of the property for your needs. Photos herein are the property of their respective owners and use of these images without the express written consent of the owner is prohibited.

LOCAL AMENITIES

RESTAURANTS

- 1 Beveland Street Coffee House
- 2 Stanford's Restaurant & Bar
- 3 Oswego Grill
- 4 Hilltop Café
- 5 Sushi Hana
- 6 Newport Seafood Grill

RESTAURANTS CONT.

- 7 George's Giant Hamburgers
- 8 Dutch Bros. Coffee
- 9 Starbucks
- HOTELS**
- 10 Homestead Studio Suites
- 11 Crowne Plaza Portland
- 12 Hilton Garden Inn Portland
- 13 Phoenix Inn Suites

SERVICES/RETAIL

- 14 Chase Bank
- 15 West Coast Bank
- 16 OnPoint Community Credit Union
- 17 Fred Meyer
- 18 Costco
- ◆ TriMet Public Transportation



KBS | Realty Advisors

For Information, Please Contact:

Trevor Kafoury
 Licensed in OR & WA
 +1 503 221 4896
 trevor.kafoury@cbre.com
 www.cbre.com/trevor.kafoury

Tiffany West
 Licensed in OR
 +1 503 221 4857
 tiffany.west@cbre.com
 www.cbre.com/tiffany.west

CBRE

1300 SW Fifth Avenue, Suite 3000
 Portland, OR 97201

www.cbre.com/portland