



520

BROADWAY

11,000 RSF
ON TWO FLOORS

Possession: May 2020
Term: Through October 2024
Rent: Negotiable

HIGH-END PLUG AND PLAY SPACE IN THE HEART OF SOHO

- Entire 7th & 8th floors
- 5,500 RSF each
- Delivered fully furnished
- 7th floor seats 48 in open plan (room to add more) with 2 private offices, 3 meeting rooms, 2 phone rooms, stadium seating area and pantry
- 8th floor seats 52 in open plan with 2 conference rooms, 3 meeting rooms, phone rooms, large café area and reception
- Oversized windows bring excellent light
- Exposed 12' loft ceilings

520

BROADWAY



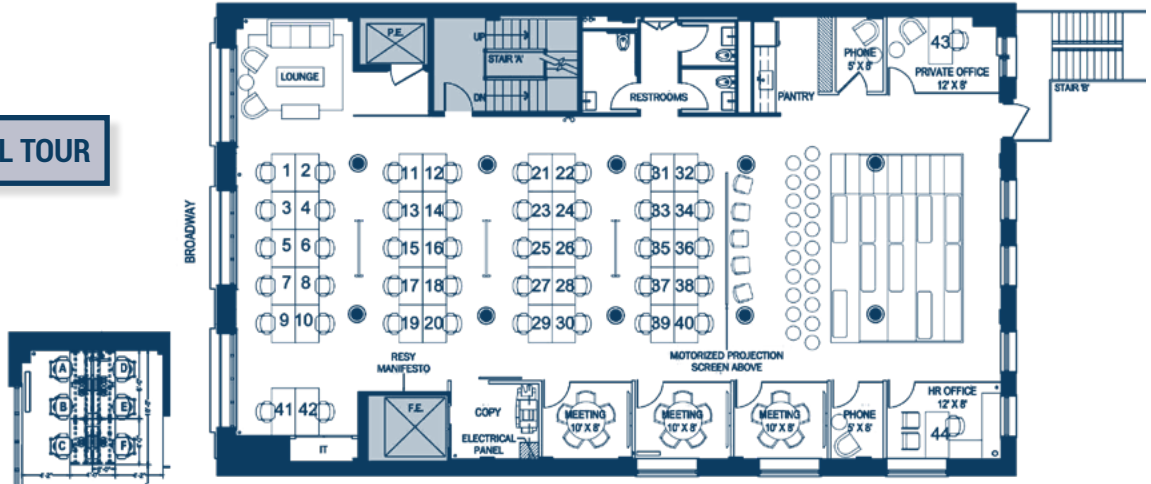
520

BROADWAY

7th Floor

5,500 SF

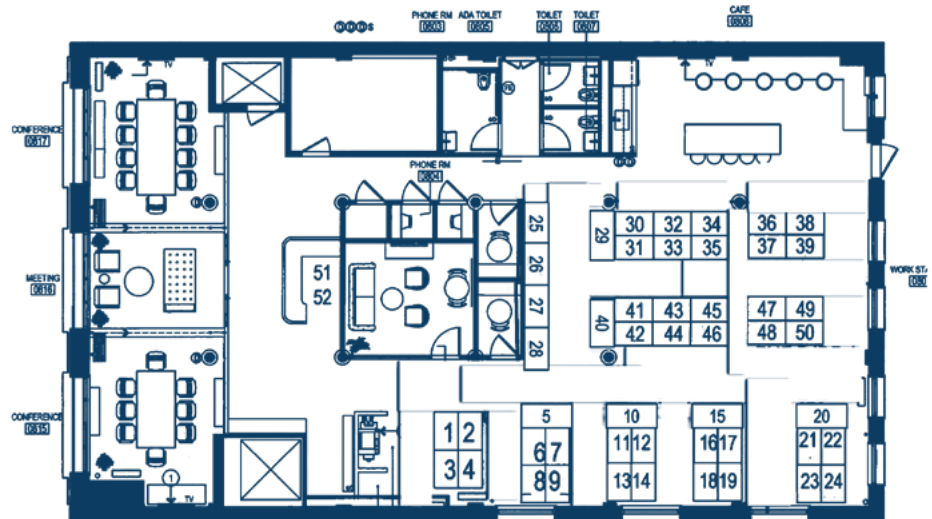
[CLICK FOR VIRTUAL TOUR](#)



8th Floor

5,500 SF

[CLICK FOR VIRTUAL TOUR](#)



For more information, please contact:

Greg Herman
212 841 7828
greg.herman@cushwake.com

Justin R. Halpern
212 841 7543
justin.halpern@cushwake.com

Dale F. Schlather
212 841 5970
dale.schlather@cushwake.com

Ed Wartels
212 841 7541
ed.wartels@cushwake.com



©2020 Cushman & Wakefield. All rights reserved. The information contained in this communication is strictly confidential. This information has been obtained from sources believed to be reliable but has not been verified. NO WARRANTY OR REPRESENTATION, EXPRESS OR IMPLIED, IS MADE AS TO THE CONDITION OF THE PROPERTY (OR PROPERTIES) REFERENCED HEREIN OR AS TO THE ACCURACY OR COMPLETENESS OF THE INFORMATION CONTAINED HEREIN, AND SAME IS SUBMITTED SUBJECT TO ERRORS, OMISSIONS, CHANGE OF PRICE, RENTAL OR OTHER CONDITIONS, WITHDRAWAL WITHOUT NOTICE, AND TO ANY SPECIAL LISTING CONDITIONS IMPOSED BY THE PROPERTY OWNER(S). ANY PROJECTIONS, OPINIONS OR ESTIMATES ARE SUBJECT TO UNCERTAINTY AND DO NOT SIGNIFY CURRENT OR FUTURE PROPERTY PERFORMANCE.