

CASTLE HILLS OFFICE PARK

8002 & 8006 West Ave San Antonio, Texas 78213

Corner of LockHill Selma & West Ave



LOCATION

GREAT NORTH CENTRAL OFFICE
LOCATION IN CASTLE HILLS CLOSE TO LOOP
410 & 281 AND IH-10

AMENITIES

- CONVENIENT TO MAJOR ARTERIAL ROADS
- CLOSE PROXIMITY TO ABUNDANT EATING ESTABLISHMENTS AND SHOPPING DESTINATIONS
- MINUTES FROM SAN ANTONIO INTERNATIONAL AIRPORT & DOWNTOWN
- PROFESSIONAL MANAGED AND LEASED BY PROPERTY MANAGEMENT BELMARES PROPERTIES

PRICE

\$15.00 PLUS NNN (approx. \$5.81)

AVAILABLE

8002 West Ave suite 1, 3,995 SF

8006 West Ave suite 3, 1,000 SF

Belmares Properties

11107 Wurzbach Rd Suite 103

San Antonio, Texas 78230

210 877-0815

Sal Belmares

210 889-7022

mary@belmaresproperties.com

Belmares

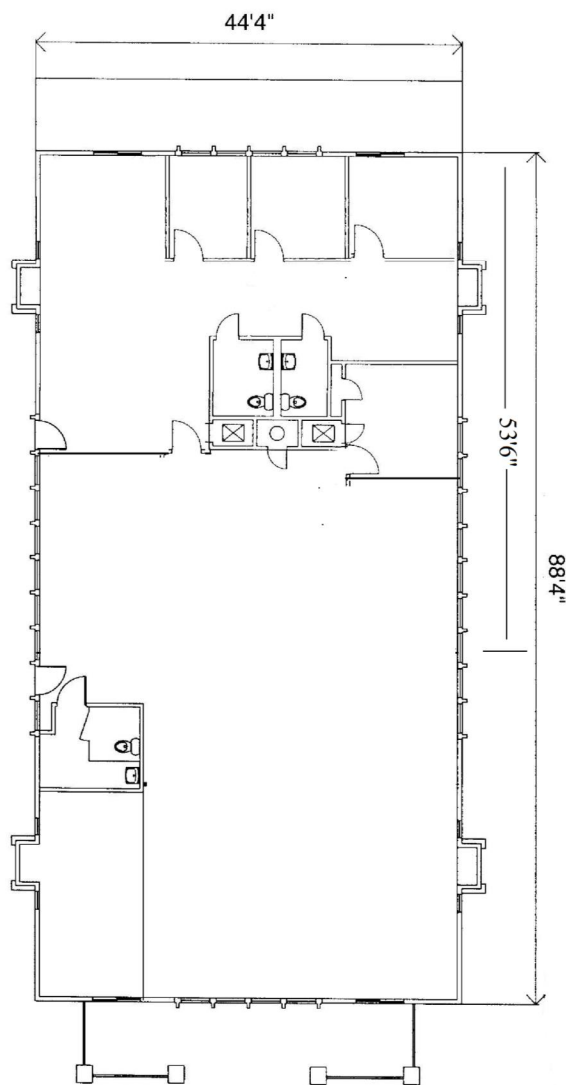
PROPERTIES

www.belmaresproperties.com

CASTLE HILLS OFFICE PARK

8002 & 8006 West Ave San Antonio, Texas 78213

Corner of LockHill Selma & West Ave



CASTLEGATE - 8002 WEST AVE.
3,953 S.F.

THE PLAN SHOWN IS A GRAPHIC REPRESENTATION AND SHOULD NOT BE USED FOR CONSTRUCTION PURPOSES. ALL INFORMATION SHOULD BE VERIFIED ON SITE.

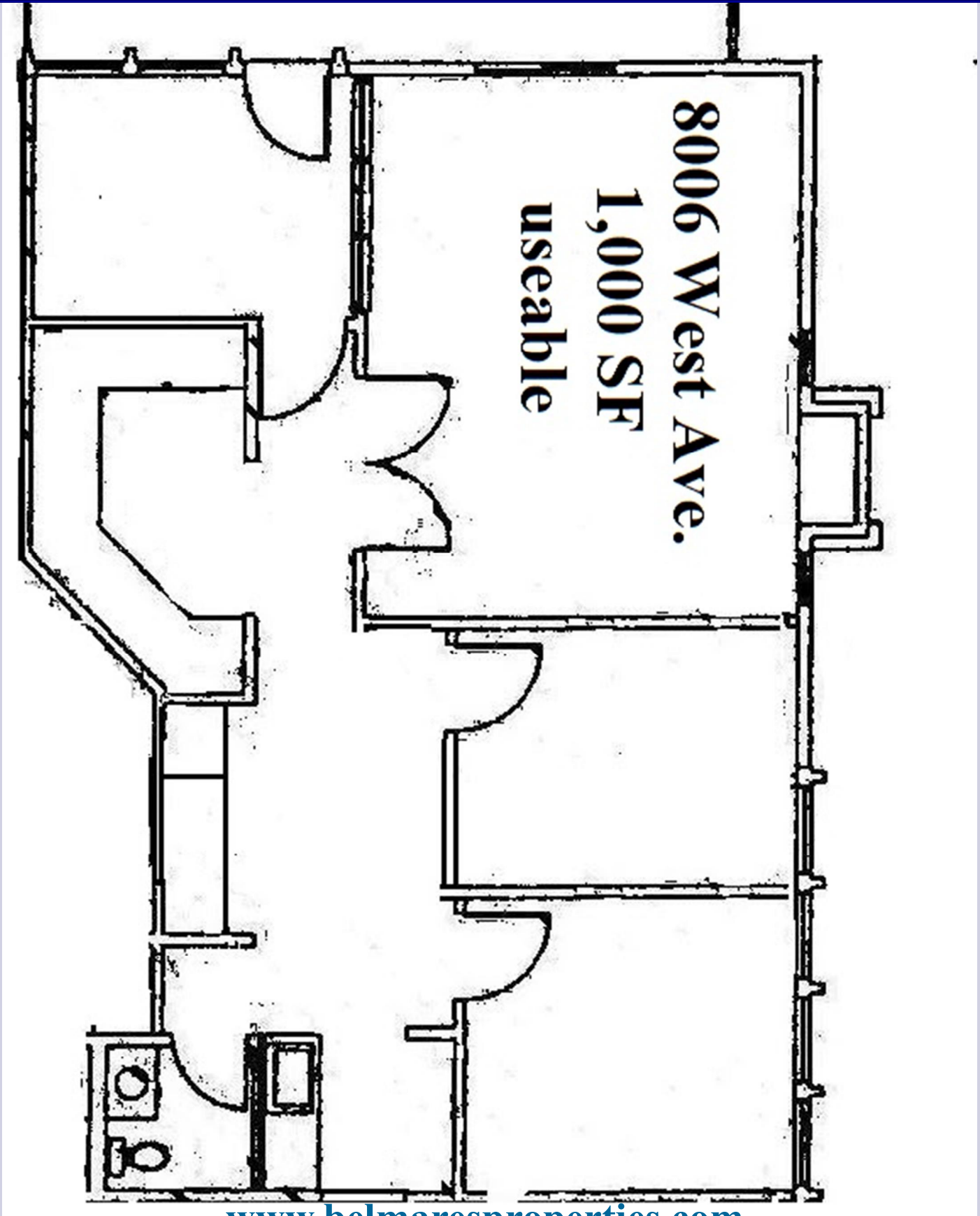
© COPYRIGHT 2006 PHILLIP E. REEVES ARCHITECT & ASSOCIATES / CONCEPTS DESIGN GROUP ALL RIGHTS RESERVED 4112006

PHILLIP E. REEVES ARCHITECT & ASSOCIATES
CONCEPTS DESIGN GROUP
507 W. RHAPSODY
SAN ANTONIO, TEXAS 78216
210/342-0270

CASTLE HILLS OFFICE PARK

8002 & 8006 West Ave San Antonio, Texas 78213

Corner of Lock-Hill Selma & West Ave



CASTLE HILLS OFFICE PARK

8002 West Ave San Antonio, Texas 78213
Corner of LockHill Selma & West Ave

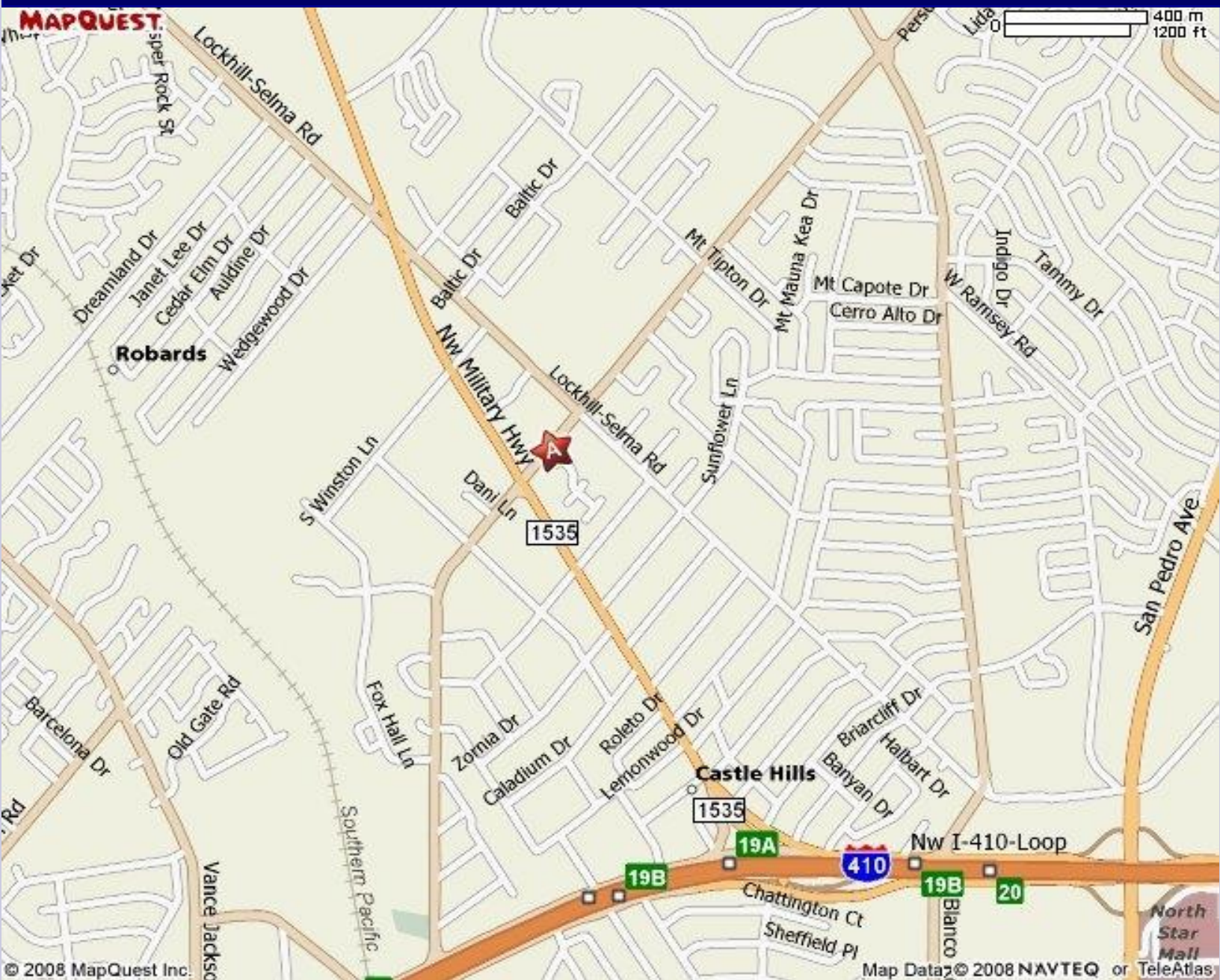


Belmares
P R O P E R T I E S
www.belmaresproperties.com

Sal Belmares
Belmares Properties, LLC
10918 Vance Jackson
San Antonio TX 78230
Office 210 877-0815
Cell 210 394-5405
sal@belmaresproperties.com

CASTLE HILLS OFFICE PARK

8002 West Ave San Antonio, Texas 78213
Corner of Lockhill Selma & West Ave



Belmares
P R O P E R T I E S

www.belmaresproperties.com

Sal Belmares
Belmares Properties, LLC
10918 Vance Jackson
San Antonio TX 78230
Office 210 877-0815
Cell 210 394-5405
sal@belmaresproperties.com