

MENLO  
CORPORATE  
CENTER

[WWW.MENLOCORPORATECENTER.COM](http://WWW.MENLOCORPORATECENTER.COM)



# CAMPUS HIGHLIGHTS



## GROW IN STYLE

Class A, 378,000 sf, multi-building office campus setting with **on site management**



## STAY FIT

on-site gym with state-of-the-art equipment, **showers** and lockers



## RE-FUEL

on-site café with adjacent indoor seated gathering area and **outdoor patio**



## INDOOR & OUTDOOR MEETING SPACE

with wireless internet and fiber optic internet available



## HIT THE TOWN

close proximity to three downtowns: Menlo Park, Palo Alto and Redwood City



## CONNECTED

complimentary **Caltrain and Marguerite shuttles**; easy access from 101



# AVAILABILITIES

BUILDING	SUITE #	RSF	NOTES	AVAILABLE
4200	<b>200</b>	±13,275	3 Private Offices, 5 Conference Rooms, Break Area, Storage Room, IT/Server Room, Large Open Area	12/1/2019
4300	<b>110</b>	±24,130	12 Private Offices, 5 Conference Rooms, Break Rooms, Storage Rooms, Training Room, IT/Server Room, Copy Room, Reception Area, Large Open Area <i>(Full Floor Available 6/1/2020 - Additional ±6,727 SF)</i>	Now
4300	<b>230</b>	±9,259	17 Private Offices, 2 Conference Rooms, Break Room, Storage Room, Copy Room, Work Room, IT/Server Room, Reception Area, Open Area	Now
4400	<b>110</b>	±11,567	4 Private Offices, 5 Conference Rooms, Break Room, 3 Storage Rooms, Phone Room, Electrical Room, Open Area	3/1/2020
4400	<b>200</b>	±15,385	12 Private Offices, 4 Conference Rooms, Break Room, IT/Server Room, Reception Area, Large Open Area	1/1/2020
4400	<b>280</b>	±3,240	3 Private Offices, 2 Conference Rooms, Break Room, IT/Server Room, Reception Area, Open Area	Now
4600	<b>100</b>	±10,985	5 Private Offices, 4 Conference Rooms, Break Room, IT/Server Room, Reception Area, Large Open Area	5/1/2020



MCC



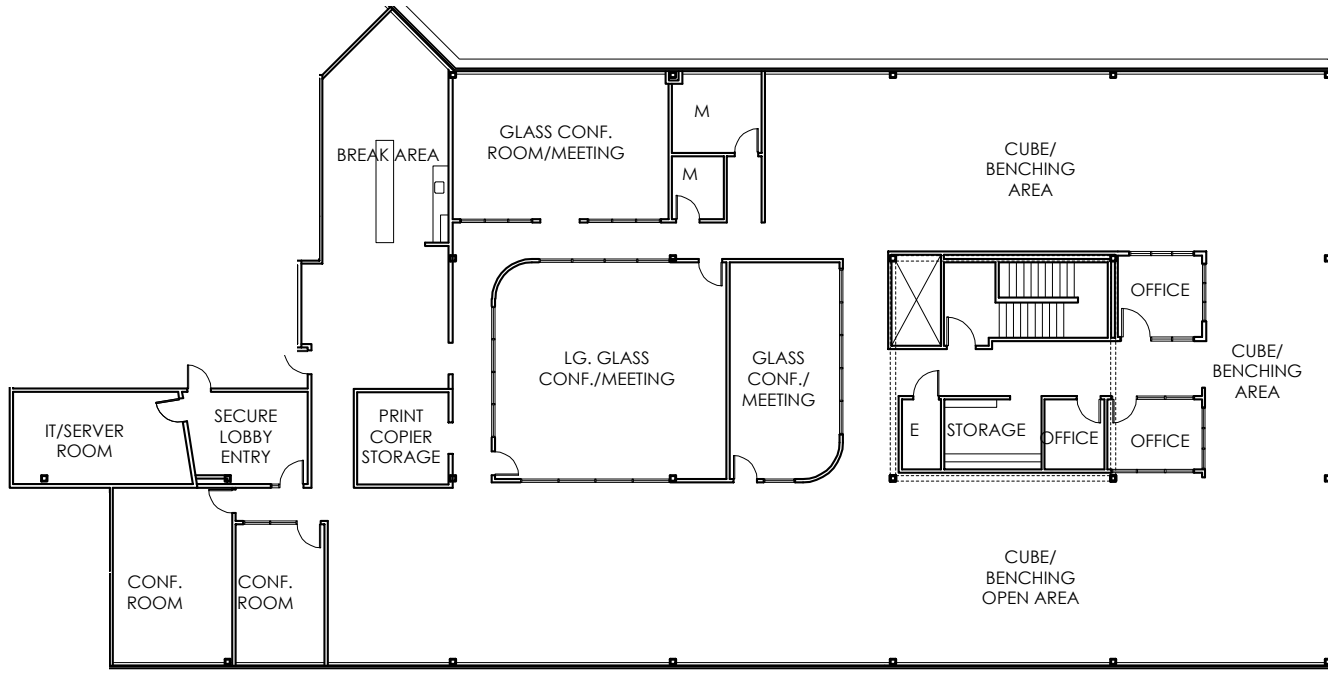
menlocorporatecenter.com | 3

# SITE PLAN



# BUILDING 4200 - SUITE 200

±13,275 RSF



M = MOTHER ROOM

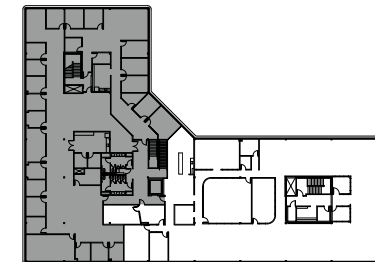
## SUITE HIGHLIGHTS:

- 3 Private Offices
- 5 Conference Rooms
- Break Area
- Storage Room
- IT/Server Room
- Large Open Office

## SITE PLAN:



## KEY PLAN:



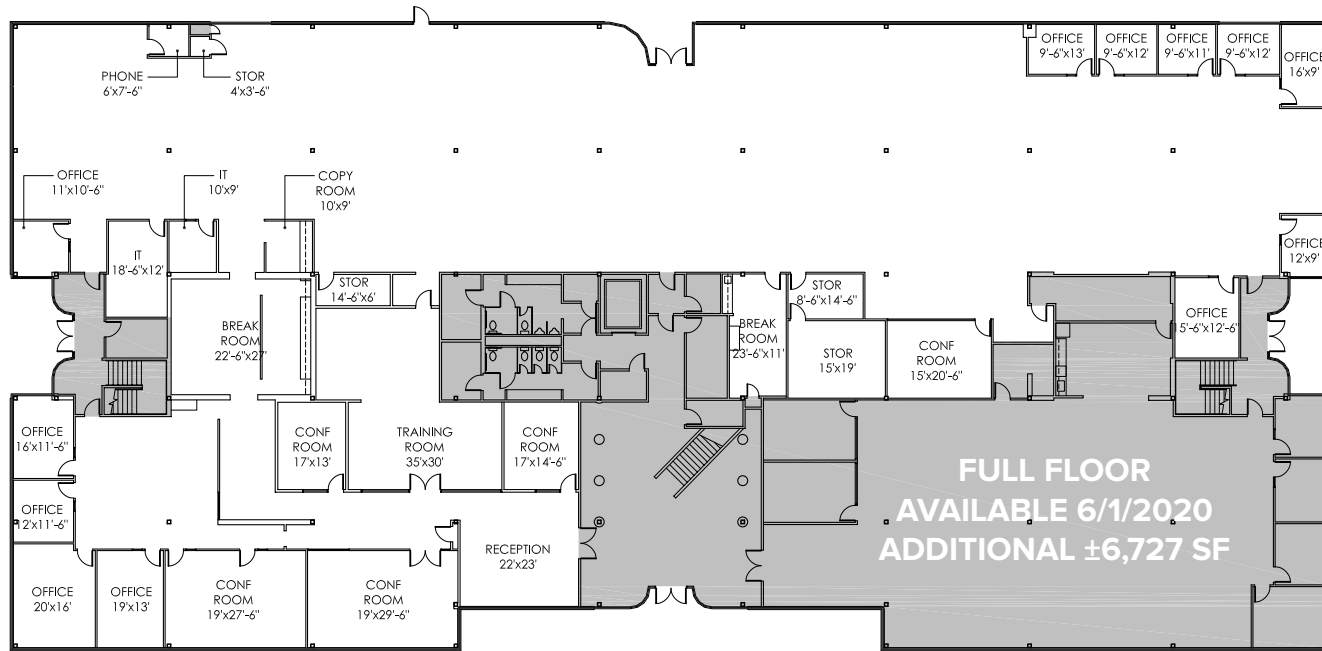
**MIKE MORAN, SIOR** | Executive Managing Director | +1 650 401 2121 | mike.moran@cushwake.com | LIC #00901003

**BEN PAUL** | Managing Principal | +1 650 401 2123 | ben.paul@cushwake.com | LIC #0121087

**BRAD ALTICK** | Managing Director | +1 650 814 5169 | brad.altick@cushwake.com | LIC #01877935

# BUILDING 4300 - SUITE 110

±24,130 RSF



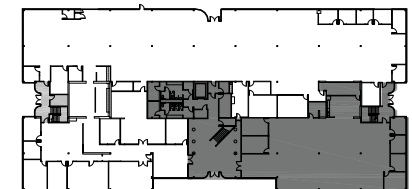
## SUITE HIGHLIGHTS:

- 12 Private Offices
- 5 Conference Rooms
- Break Rooms
- Storage Rooms
- Training Room
- IT/Server Room
- Copy Room
- Reception Area
- Large Open Area

## SITE PLAN:

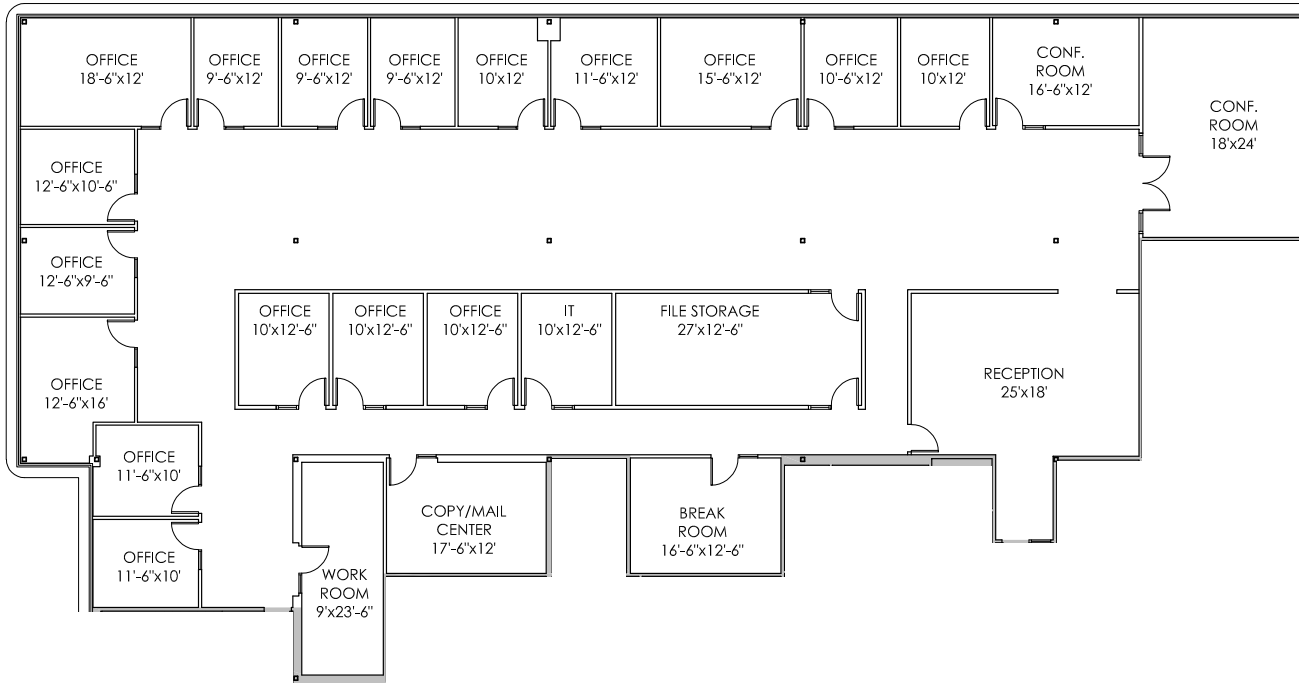


## KEY PLAN:



# BUILDING 4300 - SUITE 230

±9,259 RSF



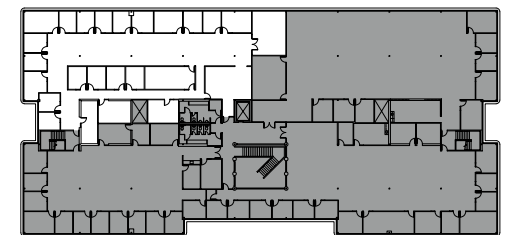
## SUITE HIGHLIGHTS:

- 17 Private Offices
- 2 Conference Rooms
- Break Room
- Storage Room
- Copy Room
- Work Room
- IT/Server Room
- Reception Area
- Open Area
- Additional ±9,500 Available 11/1/20

## SITE PLAN:



## KEY PLAN:



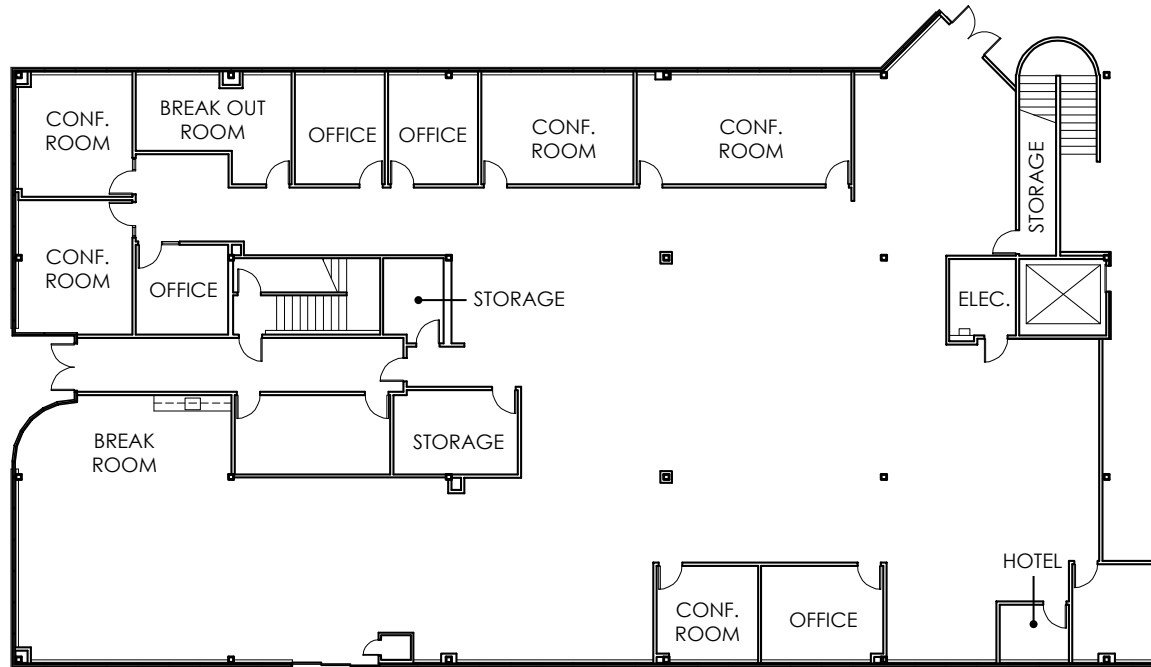
**MIKE MORAN, SIOR** | Executive Managing Director | +1 650 401 2121 | mike.moran@cushwake.com | LIC #00901003

**BEN PAUL** | Managing Principal | +1 650 401 2123 | ben.paul@cushwake.com | LIC #0121087

**BRAD ALTICK** | Managing Director | +1 650 814 5169 | brad.altick@cushwake.com | LIC #01877935

# BUILDING 4400 - SUITE 110

±11,567 RSF



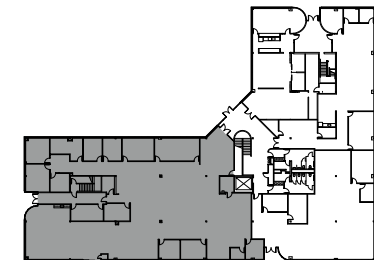
## SUITE HIGHLIGHTS:

- 4 Private Offices
- 5 Conference Rooms
- Break Room
- 3 Storage Rooms
- Phone Room
- Electrical Room
- Open Area

## SITE PLAN:



## KEY PLAN:



**MIKE MORAN, SIOR** | Executive Managing Director | +1 650 401 2121 | mike.moran@cushwake.com | LIC #00901003

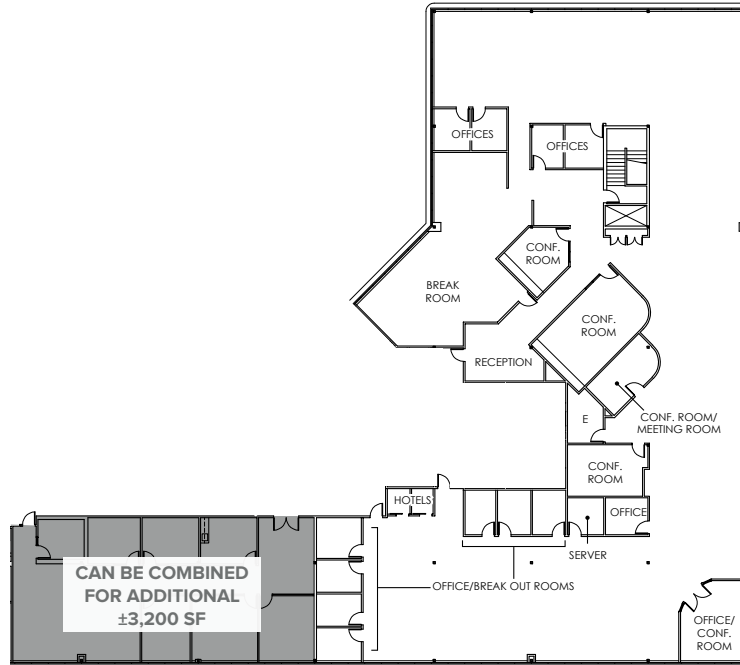
**BEN PAUL** | Managing Principal | +1 650 401 2123 | ben.paul@cushwake.com | LIC #0121087

**BRAD ALTICK** | Managing Director | +1 650 814 5169 | brad.altick@cushwake.com | LIC #01877935



# BUILDING 4400 - SUITE 200

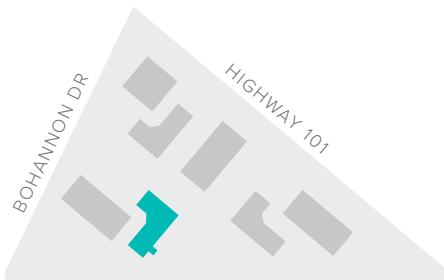
±15,385 RSF



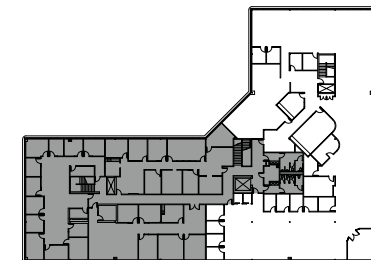
## SUITE HIGHLIGHTS:

- 12 Private Offices
- 4 Conference Rooms
- Break Room
- IT/Server Room
- Reception Area
- Large Open Area
- Can be Combined with Suite 280 for Additional ±3,200 SF

## SITE PLAN:

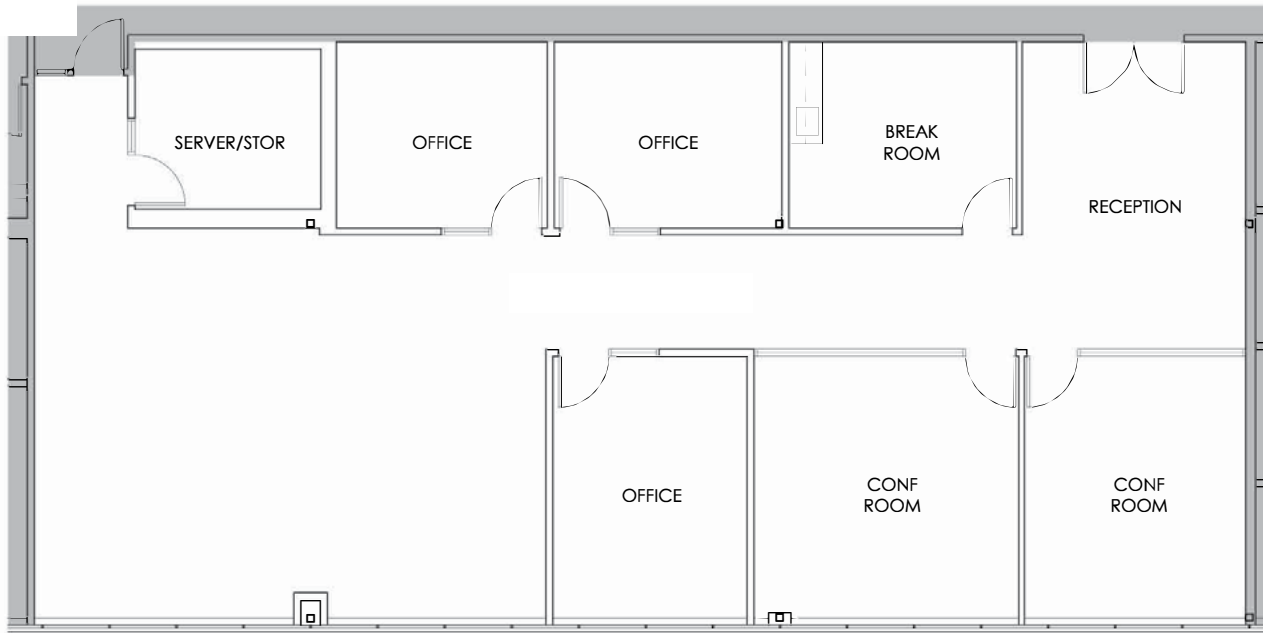


## KEY PLAN:



# BUILDING 4400 - SUITE 280

±3,240 RSF



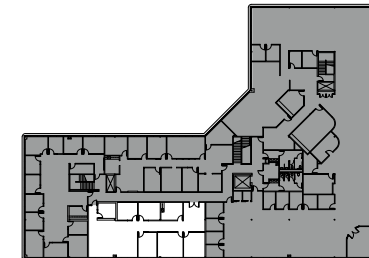
## SUITE HIGHLIGHTS:

- 3 Private Offices
- 2 Conference Rooms
- Break Room
- IT/Server Room
- Reception Area
- Open Area

## SITE PLAN:



## KEY PLAN:



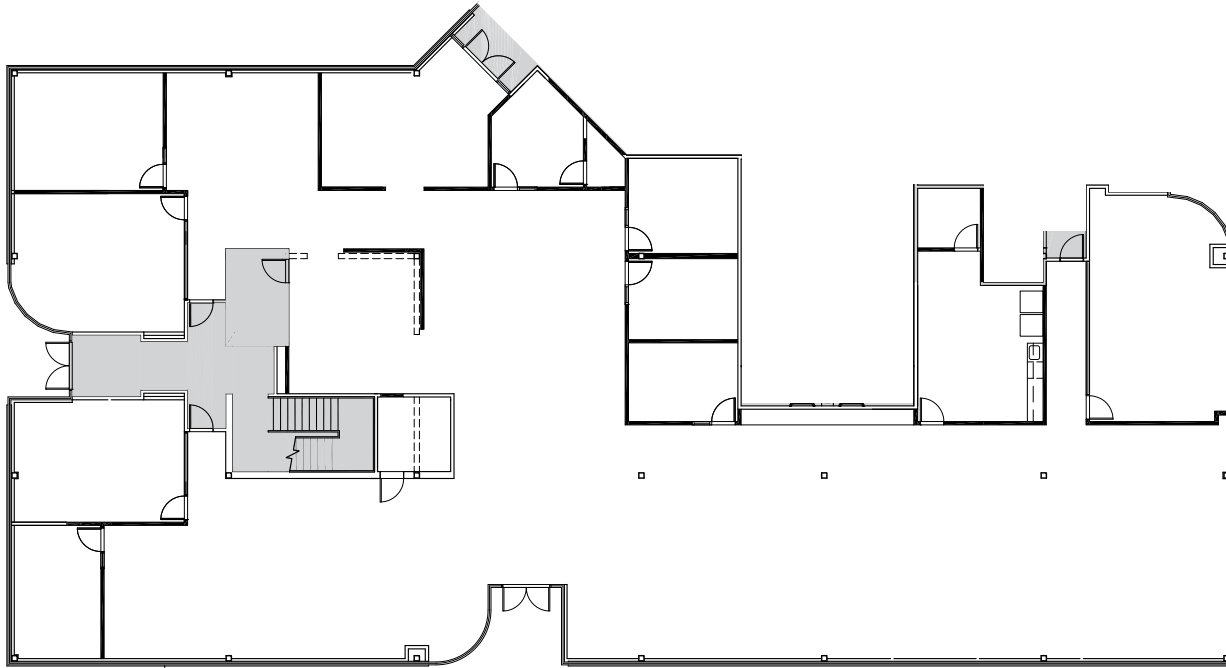
**MIKE MORAN, SIOR** | Executive Managing Director | +1 650 401 2121 | [mike.moran@cushwake.com](mailto:mike.moran@cushwake.com) | LIC #00901003

**BEN PAUL** | Managing Principal | +1 650 401 2123 | [ben.paul@cushwake.com](mailto:ben.paul@cushwake.com) | LIC #0121087

**BRAD ALTICK** | Managing Director | +1 650 814 5169 | [brad.altick@cushwake.com](mailto:brad.altick@cushwake.com) | LIC #01877935

# BUILDING 4600 - SUITE 100

±10,985 RSF



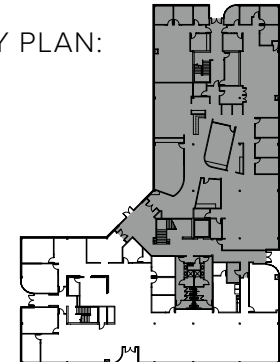
## SUITE HIGHLIGHTS:

- 5 Private Offices
- 4 Conference Rooms
- Break Room
- IT/Server Room
- Reception Area
- Large Open Area

## SITE PLAN:



## KEY PLAN:



**MIKE MORAN, SIOR** | Executive Managing Director | +1 650 401 2121 | [mike.moran@cushwake.com](mailto:mike.moran@cushwake.com) | LIC #00901003

**BEN PAUL** | Managing Principal | +1 650 401 2123 | [ben.paul@cushwake.com](mailto:ben.paul@cushwake.com) | LIC #0121087

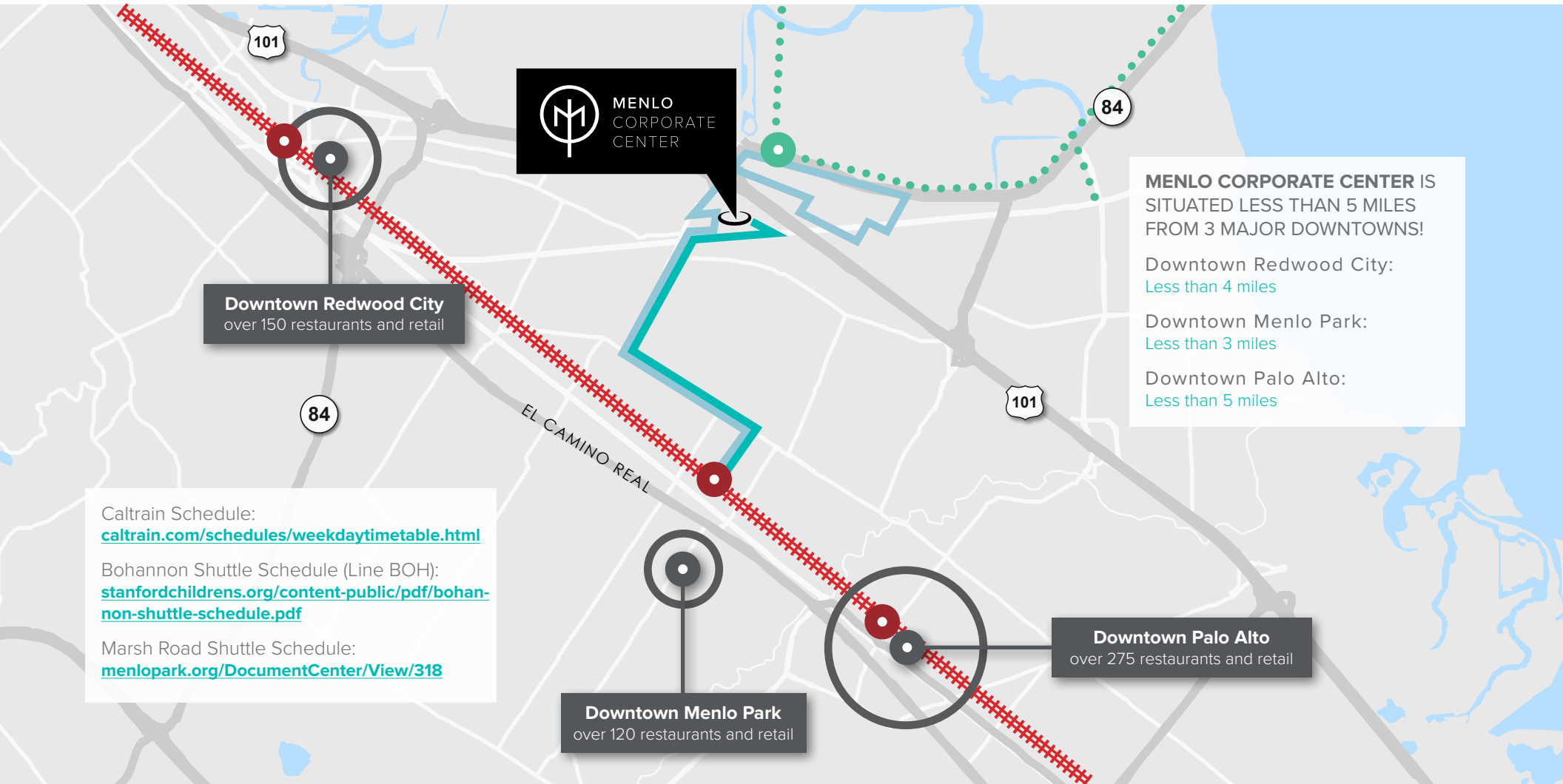
**BRAD ALTICK** | Managing Director | +1 650 814 5169 | [brad.altick@cushwake.com](mailto:brad.altick@cushwake.com) | LIC #01877935

# TRANSPORTATIONS & DOWNTOWNS

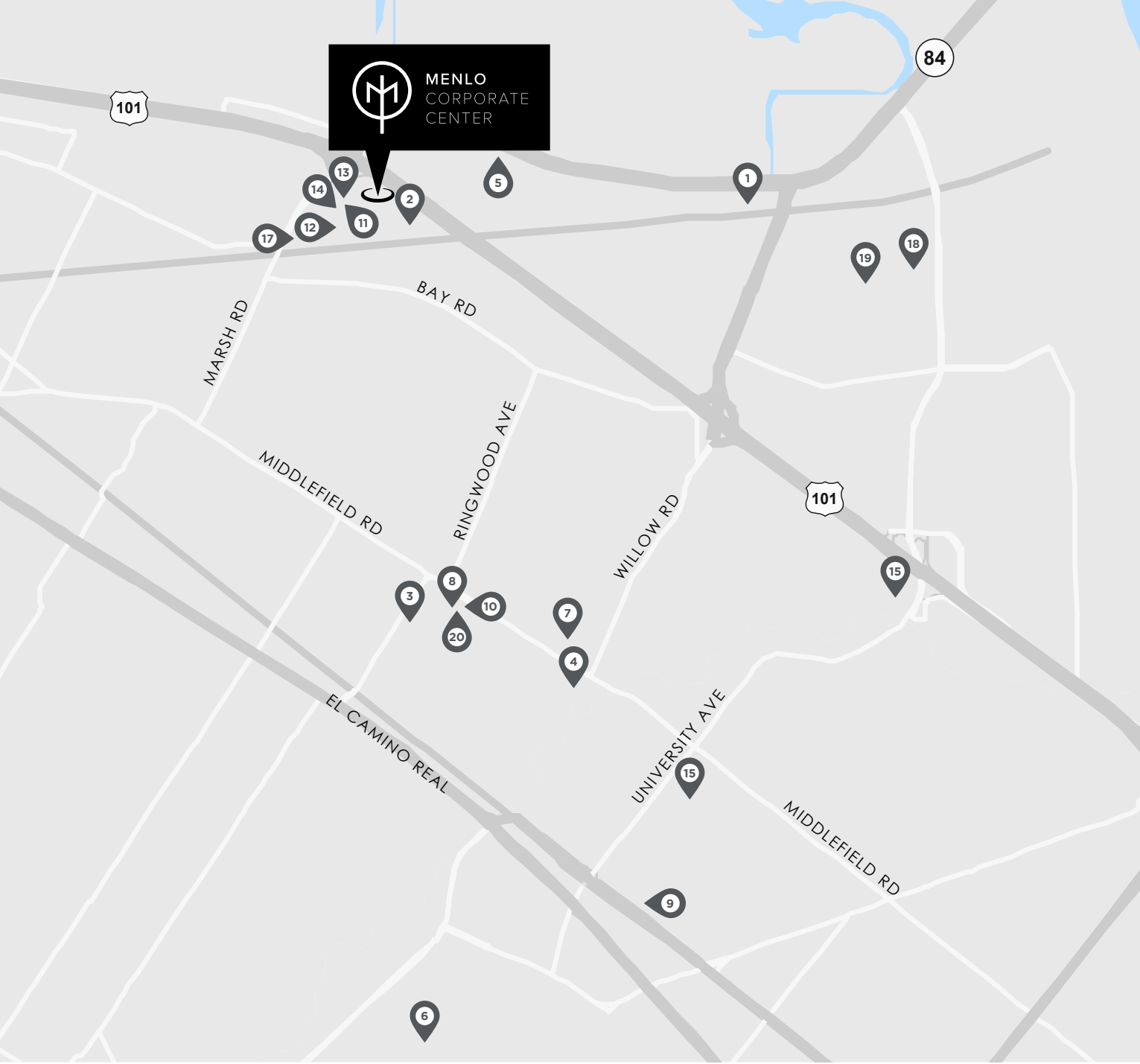
BOHANNON SHUTTLE  
MARSH RD SHUTTLE

CALTRAIN LINE  
CALTRAIN STATION

BAY TRAIL



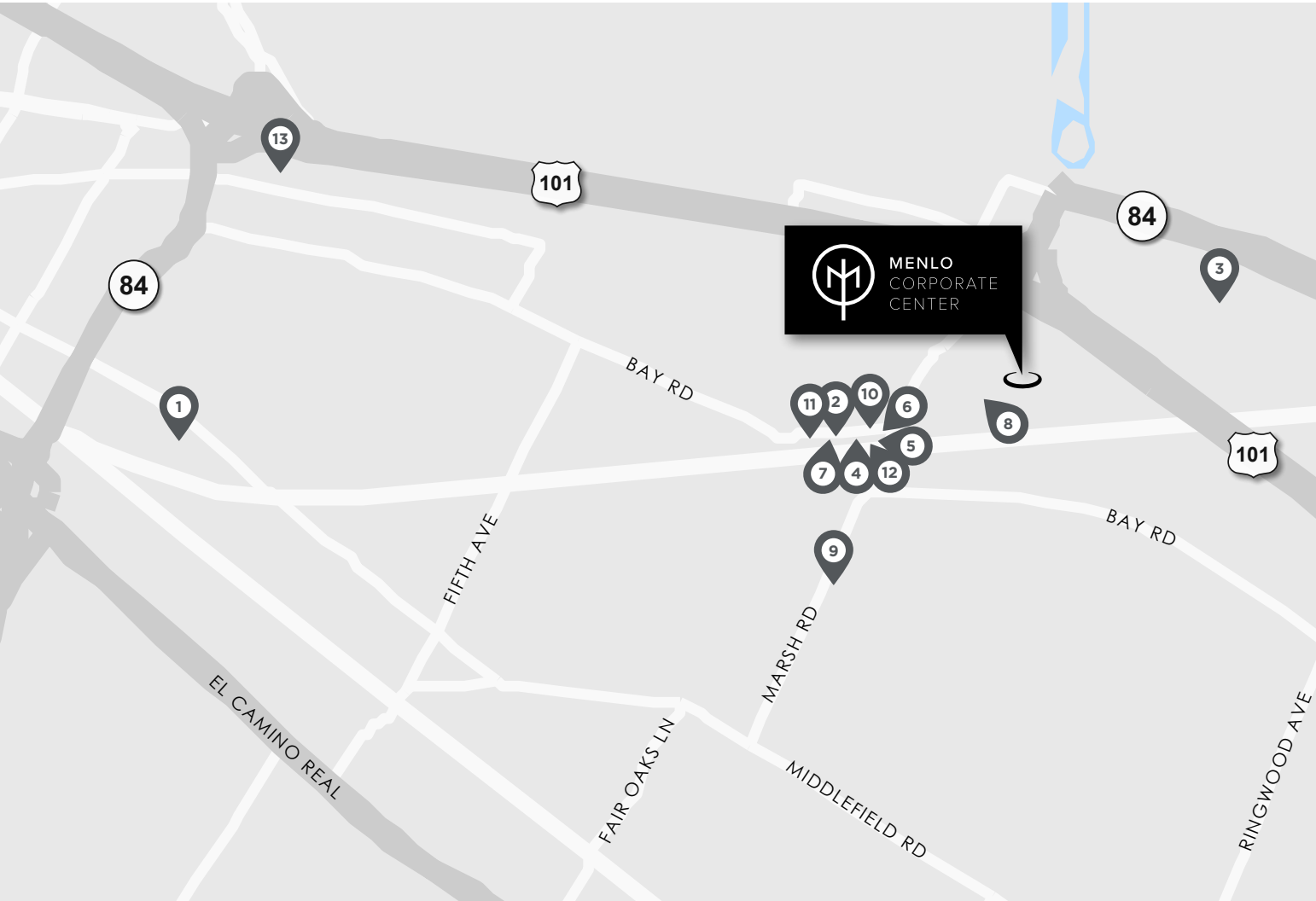




# INNOVATIVE NEIGHBORS

1		2	
3		4	
5		6	
7		8	
9		10	
11		12	
13		14	
15		16	
17		18	
19		20	

# NEARBY AMENITIES



1		2	
3		4	
5	<b>StretchWorks</b>	6	
7		8	
9	<b>Marsh Manor Cleaners</b>	10	
11	<b>Los Gallos Taqueria</b>	12	
13			



## LEASING:

### **MIKE MORAN, SIOR**

Executive Managing Director  
mike.moran@cushwake.com  
+1 650 401 2121  
CA RE License #00901003

### **BEN PAUL**

Managing Principal  
ben.paul@cushwake.com  
+1 650 401 2123  
CA RE License #0121087

### **BRAD ALTICK**

Managing Director  
brad.altick@cushwake.com  
+1 650 814 5169  
CA RE License #01877935

## ASSET MANAGEMENT:

### **EILEEN KONG RPA, LEED GA**

SVP, Asset Management  
ekong@kilroyrealty.com  
415.778.5677

### **ELECTRA MCBURNIE**

Portfolio Manager  
emcburnie@kilroyrealty.com  
650.289.5331



**CUSHMAN &  
WAKEFIELD**

The distributor of this communication is performing acts for which a real estate license is required. The information contained herein has been obtained from sources deemed reliable but has not been verified and no guarantee, warranty or representation, either express or implied, is made with respect to such information. Terms of sale or lease and availability are subject to change or withdrawal without notice.

**KILROY**