



LONG ISLAND CITY @ LIE - 29,500 SF FOR SALE

PROMINENT LOCATION WITH TREMENDOUS EXPOSURE

OPPORTUNITY ZONE

FEATURES:

50-13 35th Street:

- 11,700 Sq. Ft. Total Building Size
- 8,200 Sq. Ft. Ground Floor
- 3,500 Sq. Ft. Lower Level
- 16' Ceiling Height
- 1 Interior Loading Dock

35-11 Greenpoint Avenue:

- 17,800 Sq. Ft. Total Building Size
- 8,150 Sq. Ft. 1st Floor
- 8,150 Sq. Ft. 2nd Floor
- 1,500 Sq. Ft. Lower Level
- 12' Ceiling Height
- 1 Interior Loading Dock

NEARBY:

- Long Island Expressway
- Queens Midtown Expressway
- Brooklyn-Queens Expressway
- Queens Midtown Tunnel

Transportation:

 **7 (33rd St - Rawson St)**

 **B24 (Greenpoint Ave / Hunters Point Ave)**



SALE PRICE:

\$10,750,000.00

35-11 GREENPOINT AVE & 50-13 35TH ST, LIC, NY

BLOCK:

235

LOT:

1 & 24

ZONING:

M1-1

For Information About This Property
Contact Exclusive Agents:

David Junik, Partner
djunik@pinnaclereny.com
718-371-6406

Decio Baio, Partner
dbaio@pinnaclereny.com
718-784-8436

James Ege, Salesperson
jege@pinnaclereny.com
718-371-6423



PINNACLE REALTY

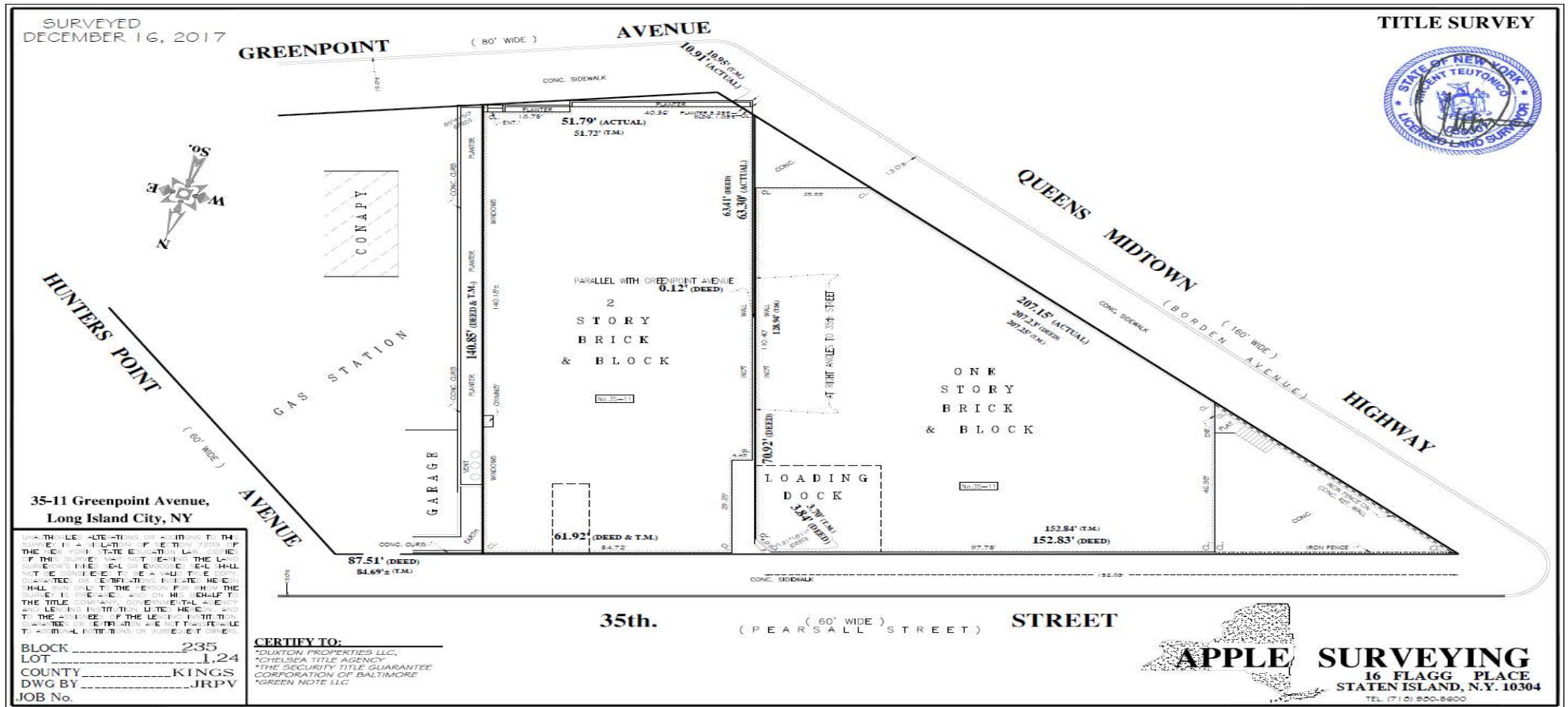
OF NEW YORK, LLC

www.pinnacleereny.com

46-34 11th Street • Long Island City, NY 11101

718-784-8282

Survey





PINNACLE REALTY

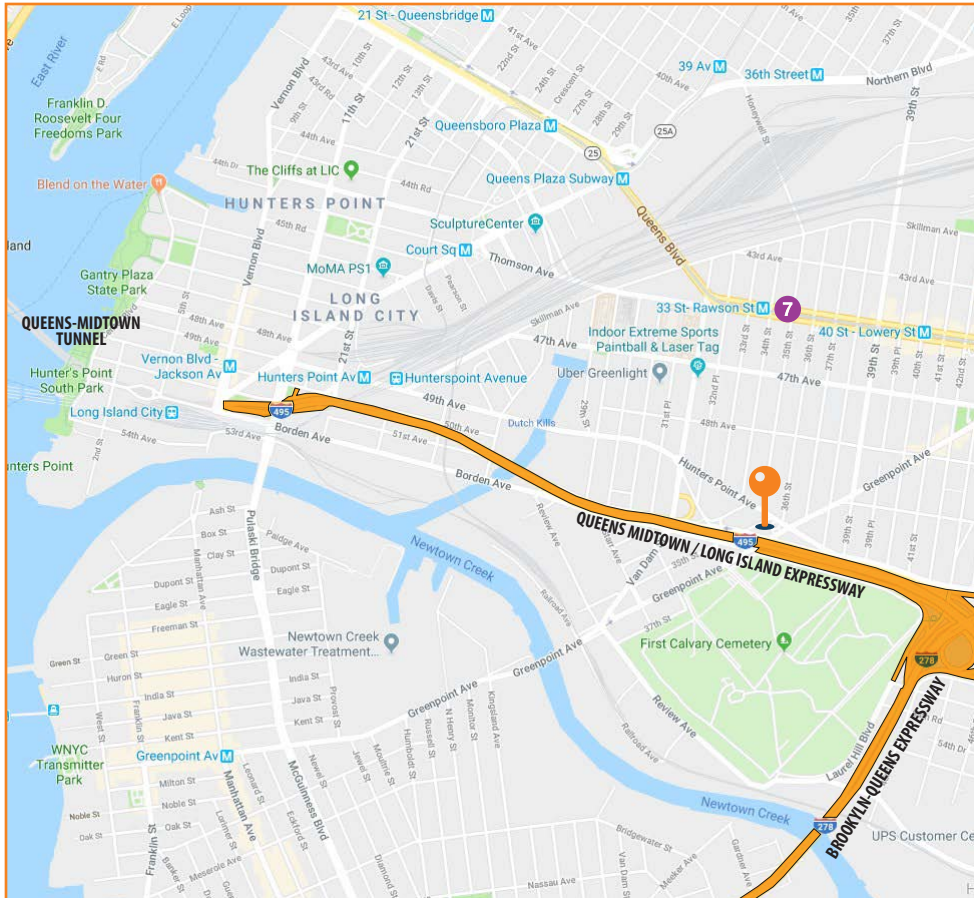
OF NEW YORK, LLC

www.pinnaclelreny.com

46-34 11th Street • Long Island City, NY 11101

718-784-8282

Google Map



Tax Map

