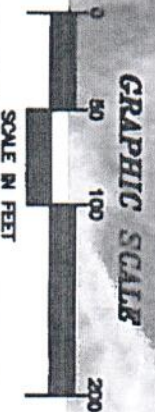
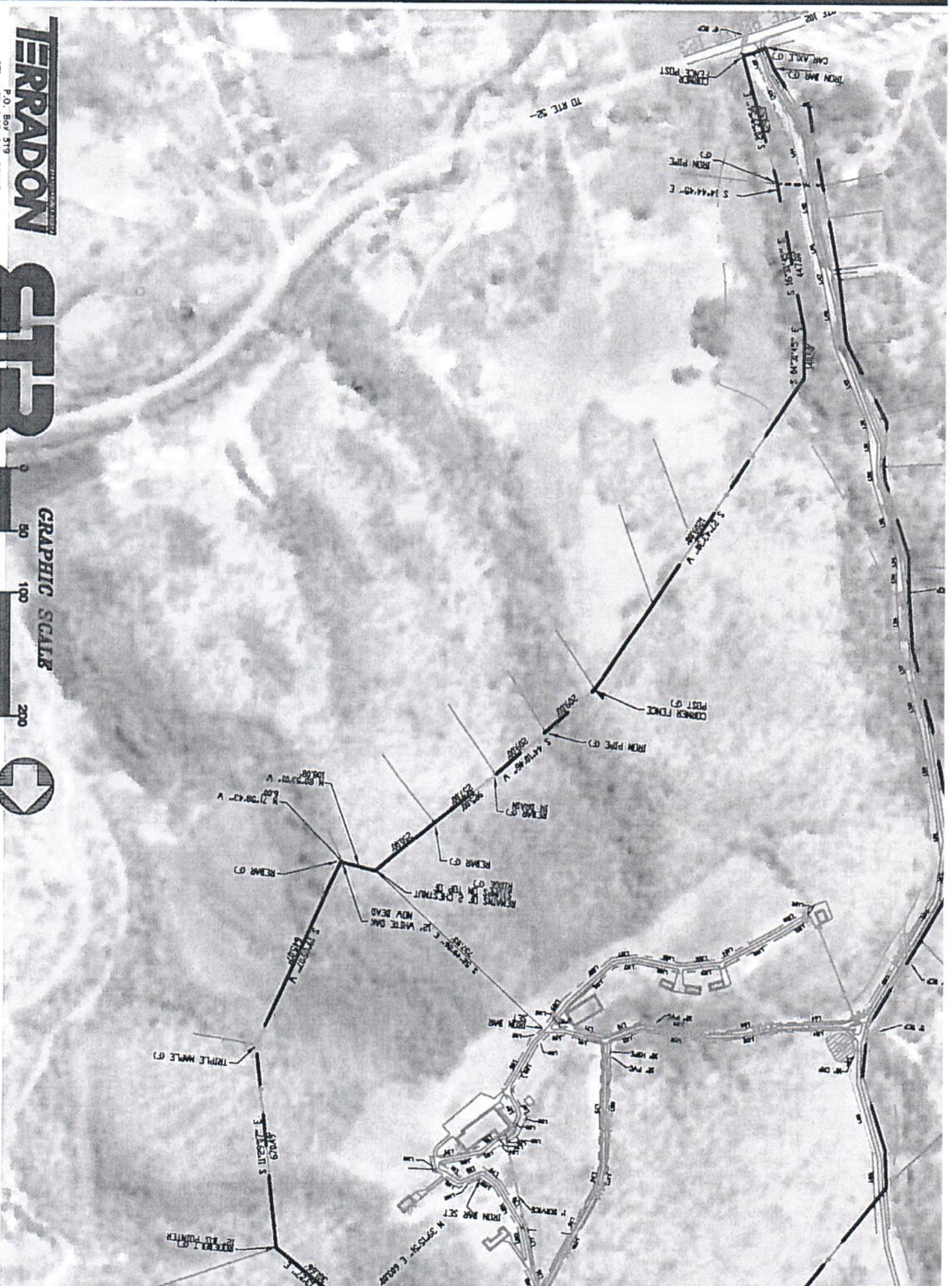


**TERRADON**  
 P.O. Box 319  
 Mtn. West Virginia 26143  
 (304) 755-8281 FAX 755-2436  
 LANDSCAPE ARCHITECTS • ENGINEERS • PLANNERS

**ETB**



**INDO-A**



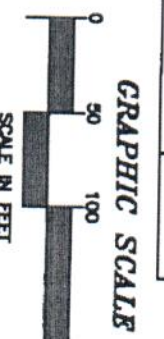


TYPE	DESCRIPTION	DEPTH TO BEDROCK	BUILDING SUITABILITY	FILL MATERIAL SUITABILITY	EROSION
Ded	DEVALB CHANNERY FINE SANDY LOAM 15 TO 30 PERCENT SLOPES	20-40 IN.	SEVERE (SLOPE)	DIFFICULT STABILIZATION	SLIGHT
Dgf	DEVALB GILPIN JEFFERSON STONY COMPLEX 35 TO 65 PERCENT SLOPES	20-40 IN.	SEVERE (SLOPE)	DIFFICULT STABILIZATION	MODERATE
EUC	ERNEST AND BUCHANNAN STONY SOILS 3 TO 15 PERCENT SLOPES	60+ IN.	SEVERE (SLOPE)	FAIR (LOW STRENGTH)	MODERATE
Gbf	GILPIN BERKS SHALEY SILT LOAMS 30 TO 70 PERCENT SLOPES	20-40 IN.	SEVERE (SLOPE)	DIFFICULT STABILIZATION	SEVERE
Gbd3	GILPIN-BERKS SHALEY SILT 15 TO 35 PERCENT SLOPES SEVERELY ERODED	20-40 IN.	SEVERE (SLOPE)	POOR (SLOPES)	SEVERE
JSD	JEFFERSON STONY LOAM 15 TO 35 PERCENT SLOPES	60+ IN.	SEVERE (SLOPE)	FAIR (SLOPES)	SLIGHT
LIC	LILY LOAM 8 TO 15 PERCENT SLOPES	20-40 IN.	SEVERE (SLOPE)	DIFFICULT STABILIZATION	SLIGHT
LID	LILY LOAM 15 TO 25 PERCENT SLOPES	20-40 IN.	SEVERE (SLOPE)	DIFFICULT STABILIZATION	MODERATE



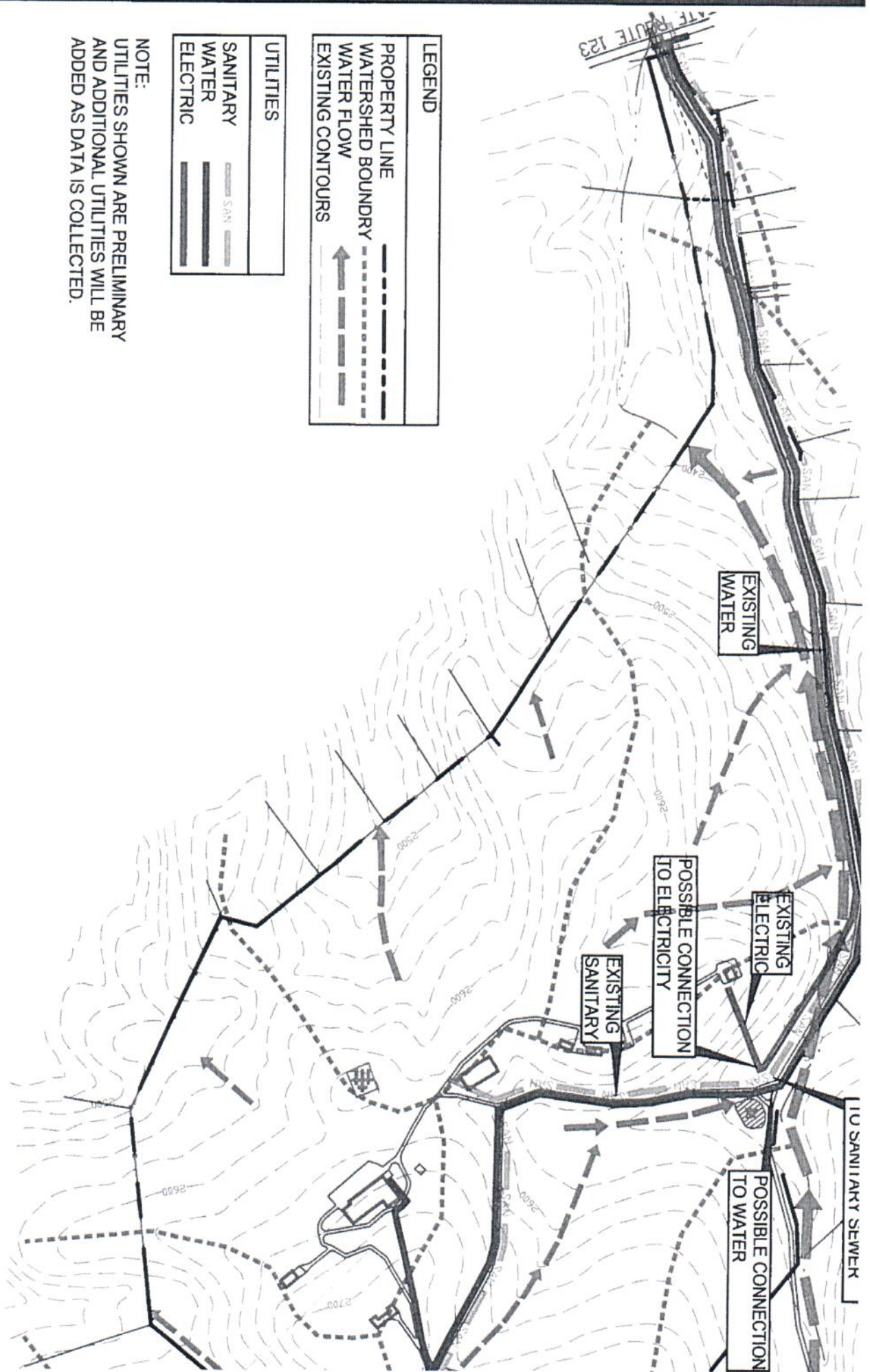
	JAN
AVG. HIGH	40
AVG. LOW	25
AVG. PRECIP	3.06
AVG. SNOWFALL	10.1
AVG. RAINFALL	2.91

**TERRADON**  
 P.O. Box 519  
 Metro, West Virginia 25145  
 (304) 735-8281 FAX 735-2636  
 LANDSCAPE ARCHITECTS • DESIGNERS • PLANNERS



**INDO-1**





**LEGEND**

PROPERTY LINE	—
WATERSHED BOUNDARY	- - -
WATER FLOW	→
EXISTING CONTOURS	- - -

**UTILITIES**

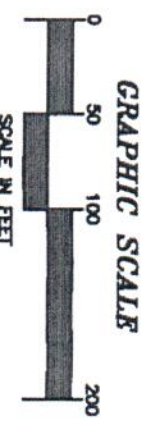
SANITARY	— — — — —
WATER	- - - - -
ELECTRIC	— — — — —

**NOTE:**  
 UTILITIES SHOWN ARE PRELIMINARY  
 AND ADDITIONAL UTILITIES WILL BE  
 ADDED AS DATA IS COLLECTED.

**TERRADON**

P.O. Box 519  
 Ntno, West Virginia 26143  
 (304) 756-8281 FAX 756-2838  
 LANDSCAPE ARCHITECTS • ENGINEERS • PLANNERS

**ETB**



**INDO-A**