

FOR SALE

# 1115 S. Main Street

Brooksville, FL 34601

22,892 SF / 6.03 ACRES

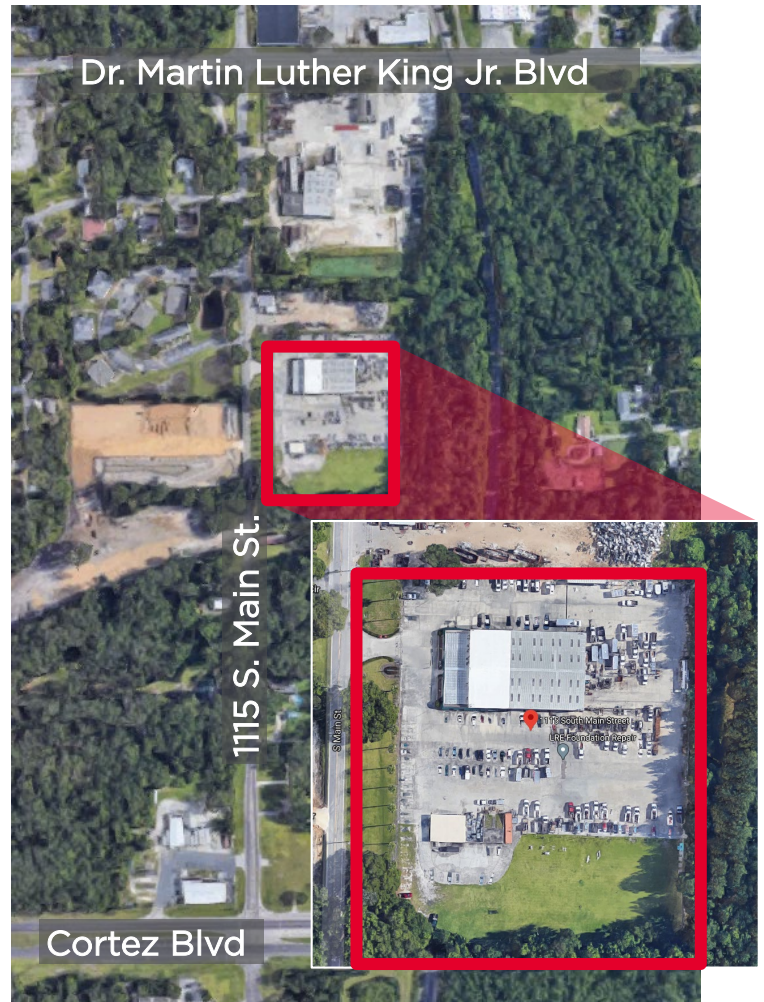


## PROPERTY HIGHLIGHTS

- Space Available: 22,892 SF / 6.03 Acres
- Grade Level Warehouse: 15,000 SF
- Office: 7,892 SF First Floor, 5,000 SF Second Floor with Elevator Access
- Loading: 8 Oversized Grade Level Doors with Drive Thru Capability
- Power- 3 Phase 800 amps/240 volt
- Constructed- 1987
- Remodeled and Reroofed- 2011/2012
- Zoning- DOR 48- Warehousing, Distribution

## ADDITIONAL FEATURES

- Fully Fenced with Electric Gated Access
- Interior and Exterior Crane Infrastructure
- Wrap Around Building Access
- Monument Signage
- Largely Impervious Concrete Lot
- Located in an Opportunity Zone



**JOSH TARKOW, SIOR**  
Senior Director  
+1 813 349 8549  
[Josh.tarkow@cushwake.com](mailto:Josh.tarkow@cushwake.com)



**CUSHMAN &  
WAKEFIELD**

[cushmanwakefield.com](http://cushmanwakefield.com)

1115 S. Main Street

Brooksville, FL 34601

22,892 SF / 6.03 ACRES

FOR SALE



JOSH TARKOW, SIOR

Senior Director

+1 813 349 8549

[Josh.tarkow@cushwake.com](mailto:Josh.tarkow@cushwake.com)

©January 2020 Cushman & Wakefield. All rights reserved. The information contained in this communication is strictly confidential. This information has been obtained from sources believed to be reliable but has not been verified. No warranty or representation, express or implied, is made as to the condition of the property (or properties) referenced herein or as to the accuracy or completeness of the information contained herein, and same is subject to the conditions imposed by the property owner(s). Any projections, opinions or estimates are subject to uncertainty and do not signify current or future property performance.

 CUSHMAN & WAKEFIELD  
[cushmanwakefield.com](http://cushmanwakefield.com)



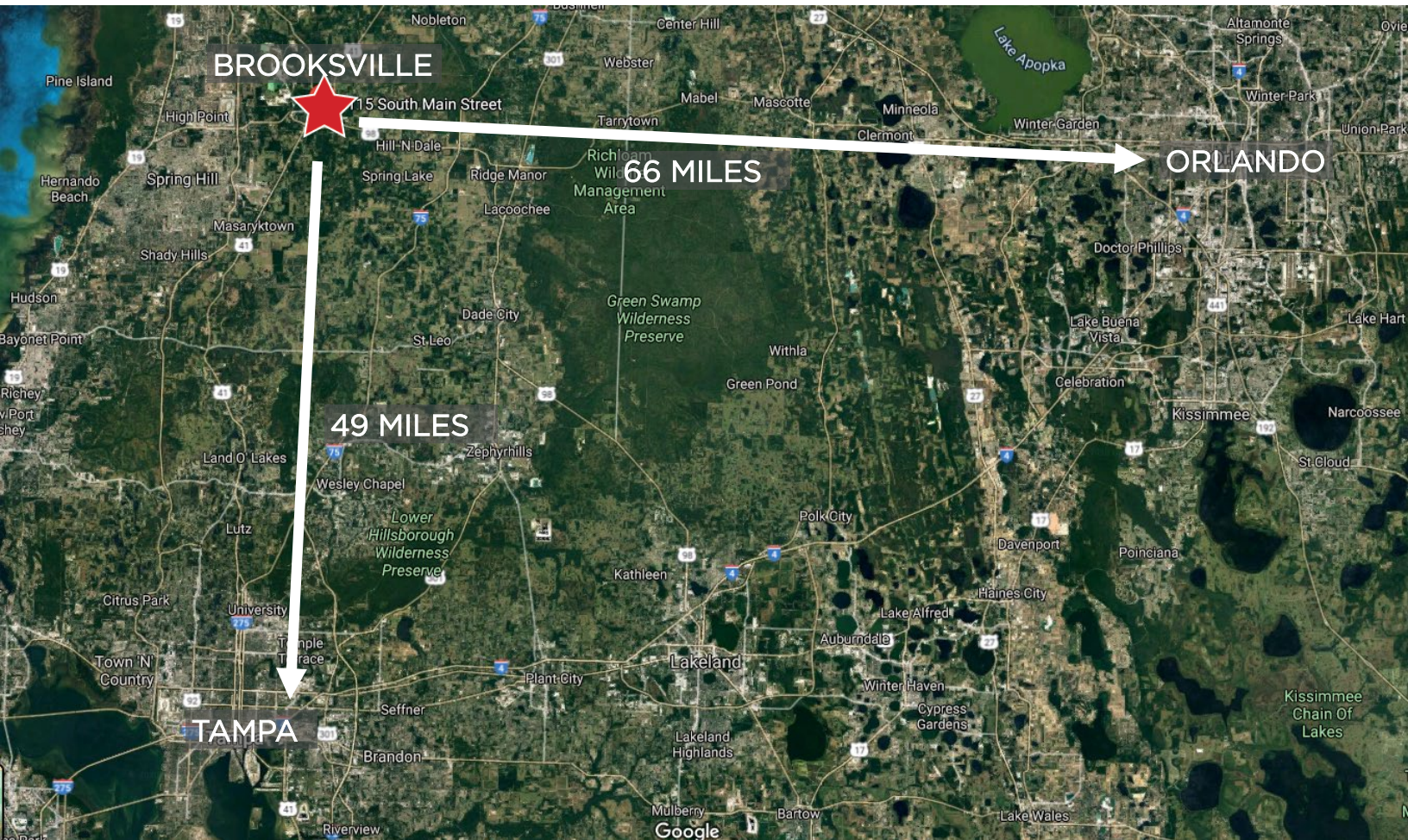
1115 S. Main Street

Brooksville, FL 34601

22,892 SF / 6.03 ACRES

FOR SALE

SITEPLAN



JOSH TARKOW, SIOR  
Senior Director  
+1 813 349 8549  
[Josh.tarkow@cushwake.com](mailto:Josh.tarkow@cushwake.com)

 CUSHMAN &  
WAKEFIELD  
[cushmanwakefield.com](http://cushmanwakefield.com)

©January 2020 Cushman & Wakefield. All rights reserved. This information is strictly confidential. This information has been obtained from sources believed to be reliable but has not been verified. No warranty or representation, express or implied, is made as to the condition of the property (or properties) referenced herein or as to the accuracy or completeness of the information contained herein, and same is subject to the conditions imposed by the property owner(s). Any projections, opinions or estimates are subject to uncertainty and do not signify current or future property performance.