

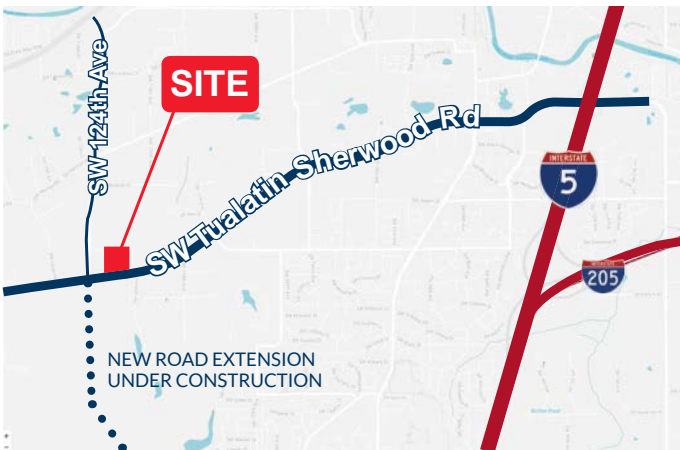
# FOR LEASE

## Tualatin Distribution Center, 12220 SW Cimino St, Tualatin, OR

73,221 SF (DIVISIBLE) NOW AVAILABLE



### Building Highlights



- Size: 73,221 SF (divisible) with BTS Office
- Construction: Concrete tilt, steel joists
- Clear Height: 32' minimum from 1st column plus 6" in from speed bays
- Loading: Cross loaded; 16 Dock (9x10); 2 drive-in (12'x14')
- Columns: 60' speed bay, then 50'-9"x52'
- Power: 600 Amp, 277/480V, 3-Phase;  
Conduits in place for 2,500 amp service
- Sprinkler: ESFR
- Lighting: LED plus Skylights
- Floor Thickness: 7" reinforced, 4,000 psi concrete
- Roof: Class "A", 60'MIL TPO system
- Rates: Please call for lease rates



FIND US ON THE WEB:  
[www.tualatindistributioncenter.com](http://www.tualatindistributioncenter.com)



Owned by  
**BLACK CREEK GROUP**

[blackcreekgroup.com](http://blackcreekgroup.com)

Leased by



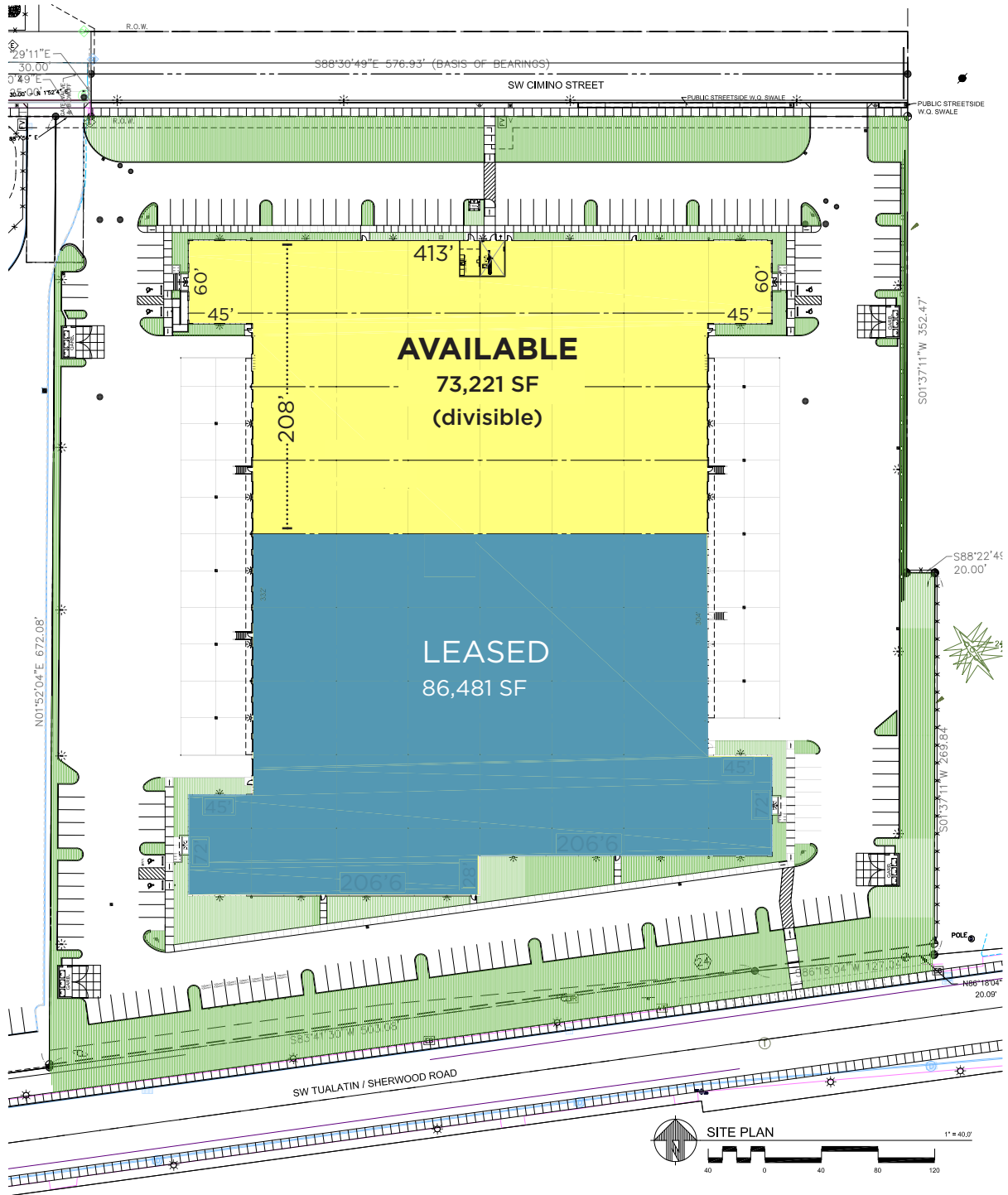
[cushmanwakefield.com](http://cushmanwakefield.com)

**Aaron Watt**, Senior Director  
503 279 1779  
[aaron.watt@cushwake.com](mailto:aaron.watt@cushwake.com)

**Keegan Clay**, Senior Associate  
503 279 1704  
[keegan.clay@cushwake.com](mailto:keegan.clay@cushwake.com)

# Tualatin Distribution Center, 12220 SW Cimino St, Tualatin, OR

73,221 SF (DIVISIBLE) NOW AVAILABLE



FIND US ON THE WEB:  
[www.tualatindistributioncenter.com](http://www.tualatindistributioncenter.com)



Owned by  
**BLACK CREEK GROUP**

[blackcreekgroup.com](http://blackcreekgroup.com)

Leased by

**Aaron Watt**  
Senior Director  
503 279 1779  
[aaron.watt@cushwake.com](mailto:aaron.watt@cushwake.com)



**Keegan Clay**  
Senior Associate  
503 279 1704  
[keegan.clay@cushwake.com](mailto:keegan.clay@cushwake.com)