

1979 MARCUS AVENUE

Lake Success, NY



FOR LEASE CLASS A OFFICE SPACE AVAILABLE



Rob Koppersmith
+ 1 631 425 1220
Robert.Koppersmith@cushwake.com

Marisa Karmitz
+1 631 425 1241
Marisa.Karmitz@cushwake.com

Joegy Raju
+1 631 425 1216
Joegy.Raju@cushwake.com



**CUSHMAN &
WAKEFIELD**

©2022 Cushman & Wakefield. All rights reserved. The information contained in this communication is strictly confidential. This information has been obtained from sources believed to be reliable but has not been verified. NO WARRANTY OR REPRESENTATION, EXPRESS OR IMPLIED, IS MADE AS TO THE CONDITION OF THE PROPERTY (OR PROPERTIES) REFERENCED HEREIN OR AS TO THE ACCURACY OR COMPLETENESS OF THE INFORMATION CONTAINED HEREIN, AND SAME IS SUBMITTED SUBJECT TO ERRORS, OMISSIONS, CHANGE OF PRICE, RENTAL OR OTHER CONDITIONS, WITHDRAWAL WITHOUT NOTICE, AND TO ANY SPECIAL LISTING CONDITIONS IMPOSED BY THE PROPERTY OWNER(S). ANY PROJECTIONS, OPINIONS OR ESTIMATES ARE SUBJECT TO UNCERTAINTY AND DO NOT SIGNIFY CURRENT OR FUTURE PROPERTY PERFORMANCE.



FOR LEASE

AVAILABLE SPACE

FLOOR	SUITE	SF
CONCOURSE	C110	± 4,215
2nd	215	± 2,158
2nd	225	± 1,750

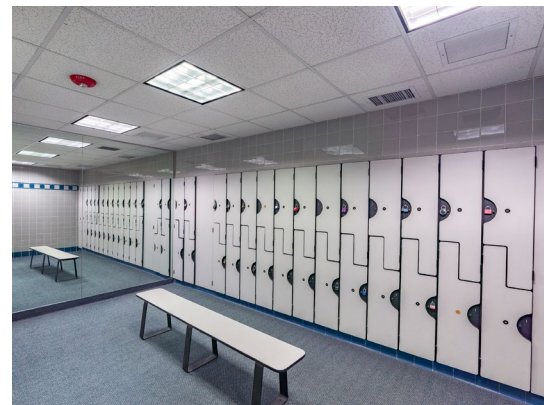
1979 MARCUS AVENUE

Lake Success, NY

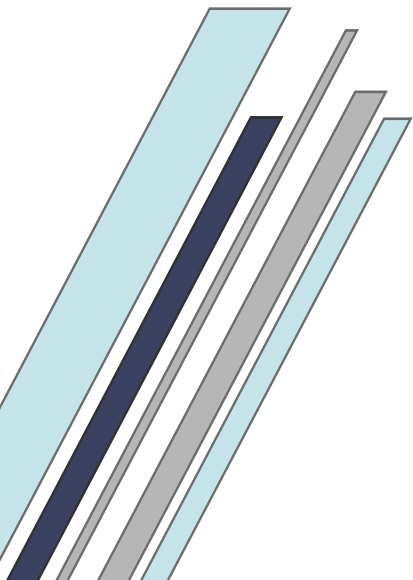
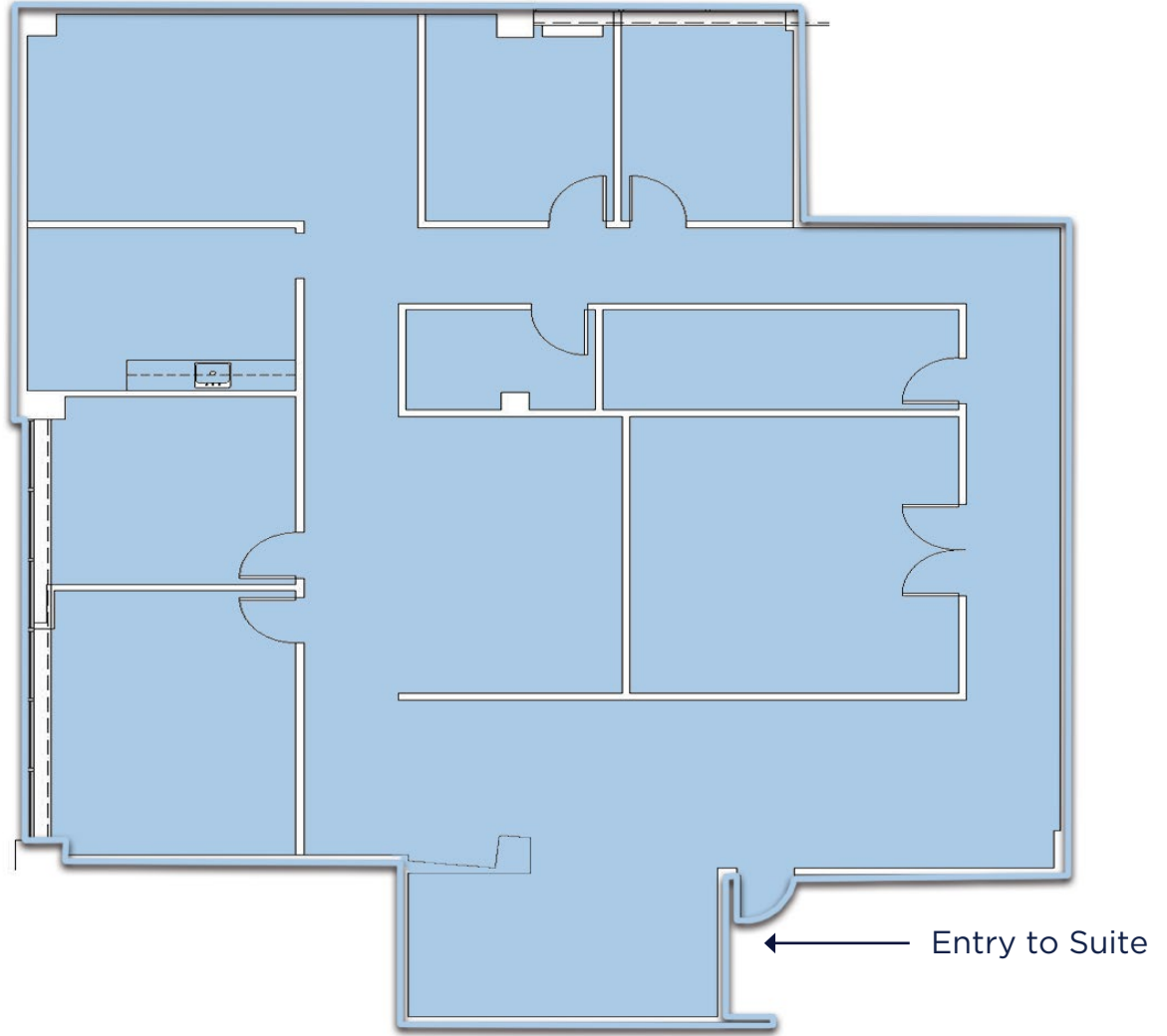


BUILDING FEATURES

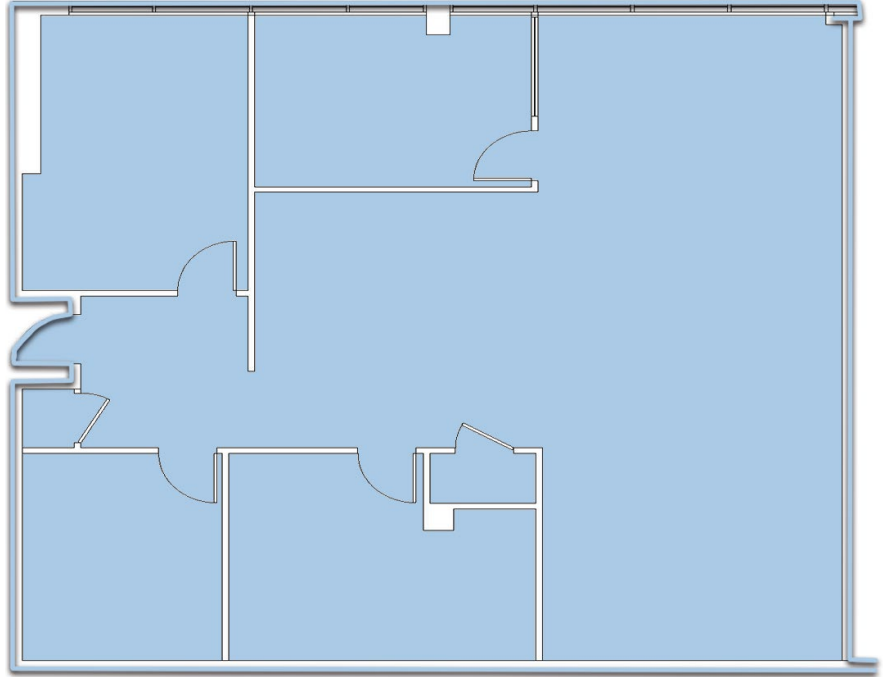
- 350,000 sf building
- 4:1 parking with underground parking garage for tenants
- Full Service Cafe
- Fitness Center
- 24/7 access
- Seating areas with WIFI throughout building
- Open Atrium
- Building Security Guard and video monitoring system throughout building
- Nearby public transportation includes LIRR Great Neck, New Hyde Park and Stewart Manor stations and MTA Bus Services
- Easy access to all major highways



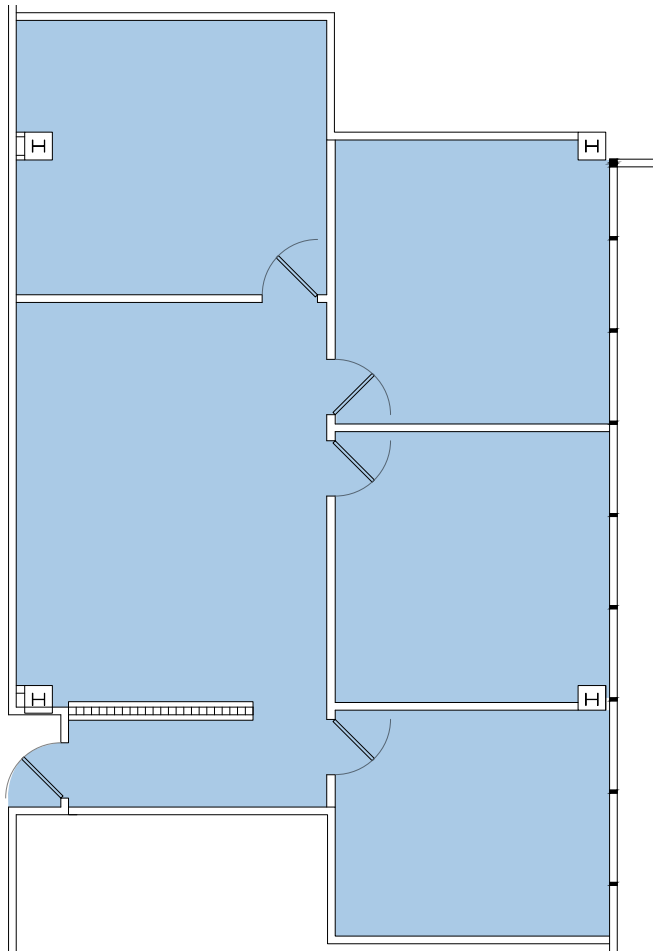
CONCOURSE
SUITE C110
± 4,215 SF



SECOND FLOOR
SUITE 215
± 2,158 SF



SECOND FLOOR
SUITE 225
± 1,750 SF



1979 MARCUS AVENUE

Lake Success, NY

AREA MAP



Rob Koppersmith
 +1 631 425 1220
 Robert.Koppersmith@cushwake.com

Marisa Karmitz
 +1 631 425 1241
 Marisa.Karmitz@cushwake.com

Joegy Raju
 +1 631 425 1216
 Joegy.Raju@cushwake.com

