



# HUGUENOT PLACE

1520 HUGUENOT PLACE, MIDLOTHIAN, VA 23113

## FEATURES

- **1,104 SF Office Space For Lease.**
- Conveniently located near *Chesterfield Towne Center*.
- Excellent visibility from Huguenot Road.
- Perfect location for small business or satellite offices.
- Individual office entrance.
- Parking at front door.
- Rental rate \$16.00/SF MG

## DEMOGRAPHICS\*

	1 mile	3 miles	5 miles
2017 Est. Population	5,279	52,229	115,238
Avg. HH Income	\$93,535	\$110,442	\$109,984
Daytime Employment	13,536	37,085	76,467

**Traffic Count** 66,500 VPD Midlothian Tnpk. & Huguenot  
 39,689 VPD Huguenot & Koger

\*Detailed demographics upon request



**AVAILABLE**  
**Taylor Long**  
**PROPERTIES**  
 Commercial Real Estate  
**804.864.9788**  
[www.taylorlongproperties.com](http://www.taylorlongproperties.com)



**Brian Bock:** 804-864-9788, Ext. 106  
 brianbock@taylorlongproperties.com

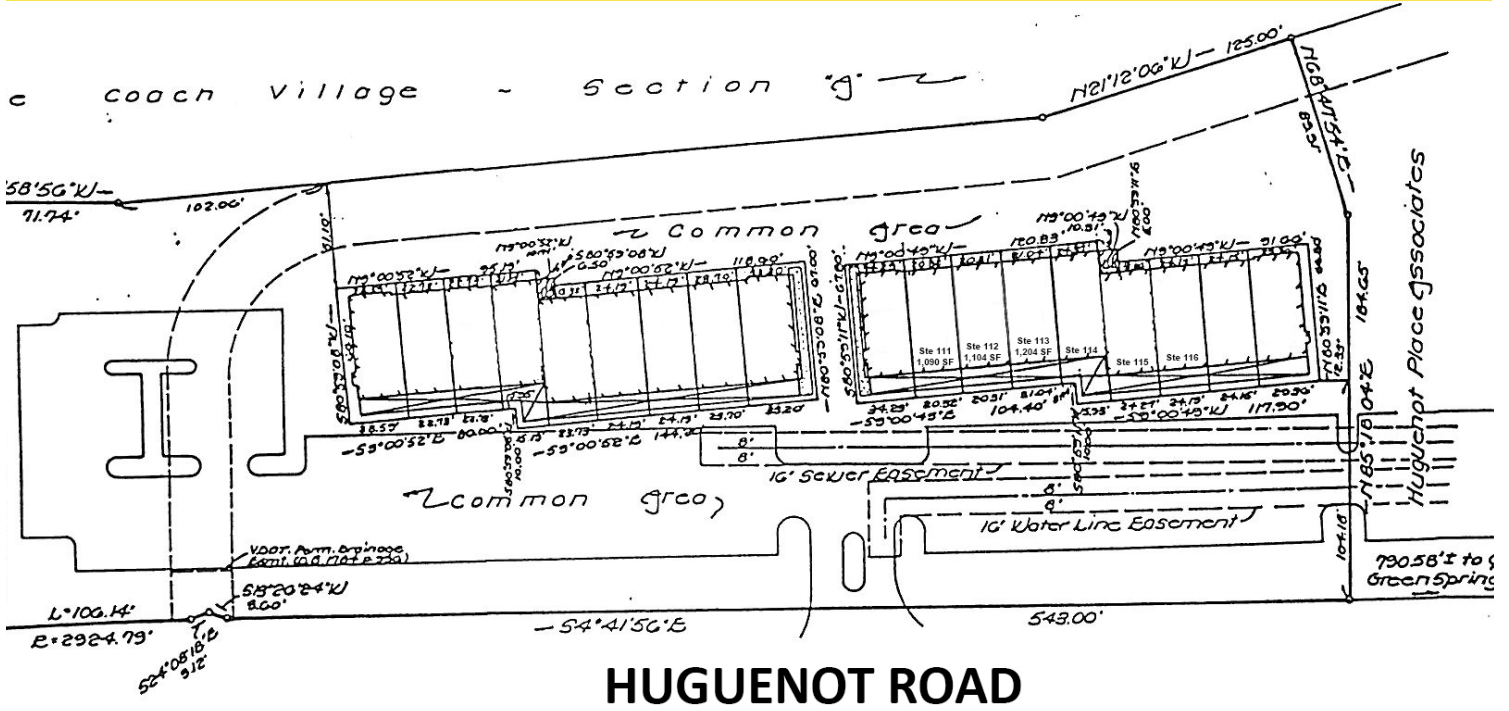
CoStar  
**POWER BROKER**  
 2016 Top Firm Award



**Taylor Long**  
**PROPERTIES**  
 Commercial Real Estate



# SITE PLAN



AERIAL



**HUGUENOT PLACE**  
 Taylor Long  
 PROPERTIES  
 Commercial Real Estate  
 804.864.9788  
 www.taylorlongproperties.com

*Chesterfield*  
**TOWNE CENTER**