

FOR LEASE

CENTERPOINT CORPORATE PARK

CASCADE EAST, CASCADE WEST AND ATRIUM BUILDING
20819, 20829 72ND AVENUE SOUTH & 6811 SOUTH 204TH ST
Kent, Washington 98032



CONTACT US

GEOFF PENDERGAST
+1 425 462 6950
geoff.pendergast@cbre.com

ANDREW HITCHCOCK
+1 206 442 2719
andrew.hitchcock@cbre.com

RICK HART
+1 425 462 6985
rick.hart@cbre.com



www.fountainheadnorthwest.com

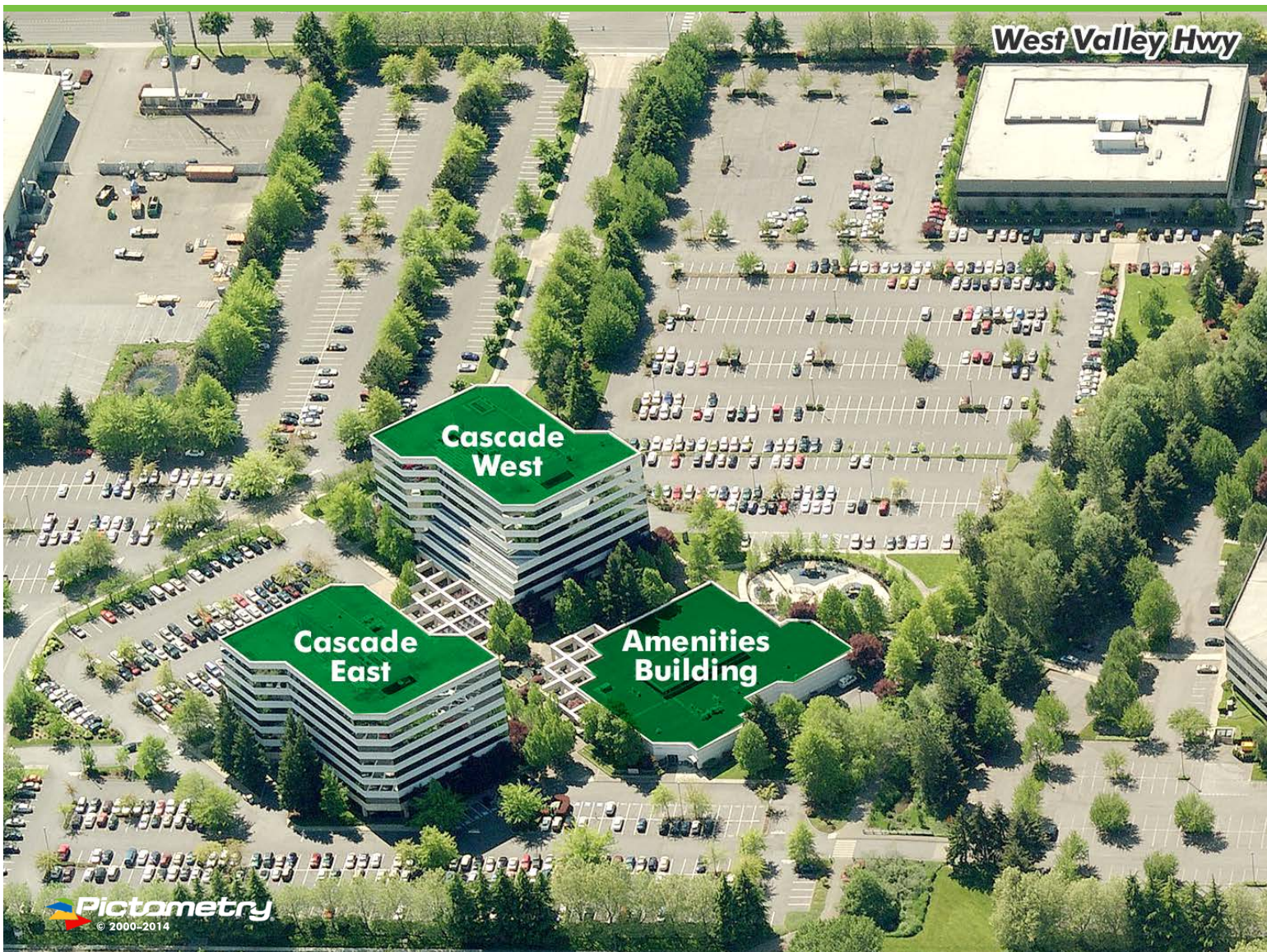
CBRE

FOR LEASE CENTERPOINT CORPORATE PARK



PROPERTY HIGHLIGHTS

- + Premier office park with first-class quality improvements and finishes
- + Flexible floor plates to accommodate a variety of sized office suites
- + Surrounded by high profile corporate neighbors
- + Close proximity to well educated and fast growing labor pool
- + Infrastructure to support telecom and computer centers
- + Access to public transportation routes
- + Views of Mount Rainier
- + Convenient access to I-5, I-405 and Highway 167



CASCADE EAST, CASCADE WEST AND ATRIUM BUILDING

20819, 20829 72ND AVENUE SOUTH & 6811 SOUTH 204TH STREET

Kent, Washington 98032



ON-SITE AMENITIES

- + Full service fitness center offering towel service, lockers and showers
- + Professional on-site property management and engineering
- + Alki Bakery Cafe offering coffee, breakfast, lunch and catering
- + Bright Horizon's Child Care Center; serving children from infant to Pre-Kindergarten
- + Professional conference center, with four conference rooms that can accommodate up to 200 people

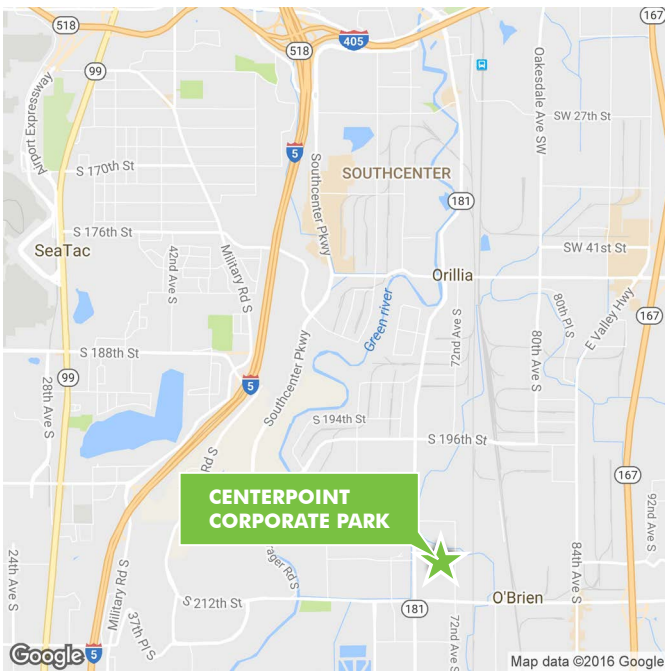
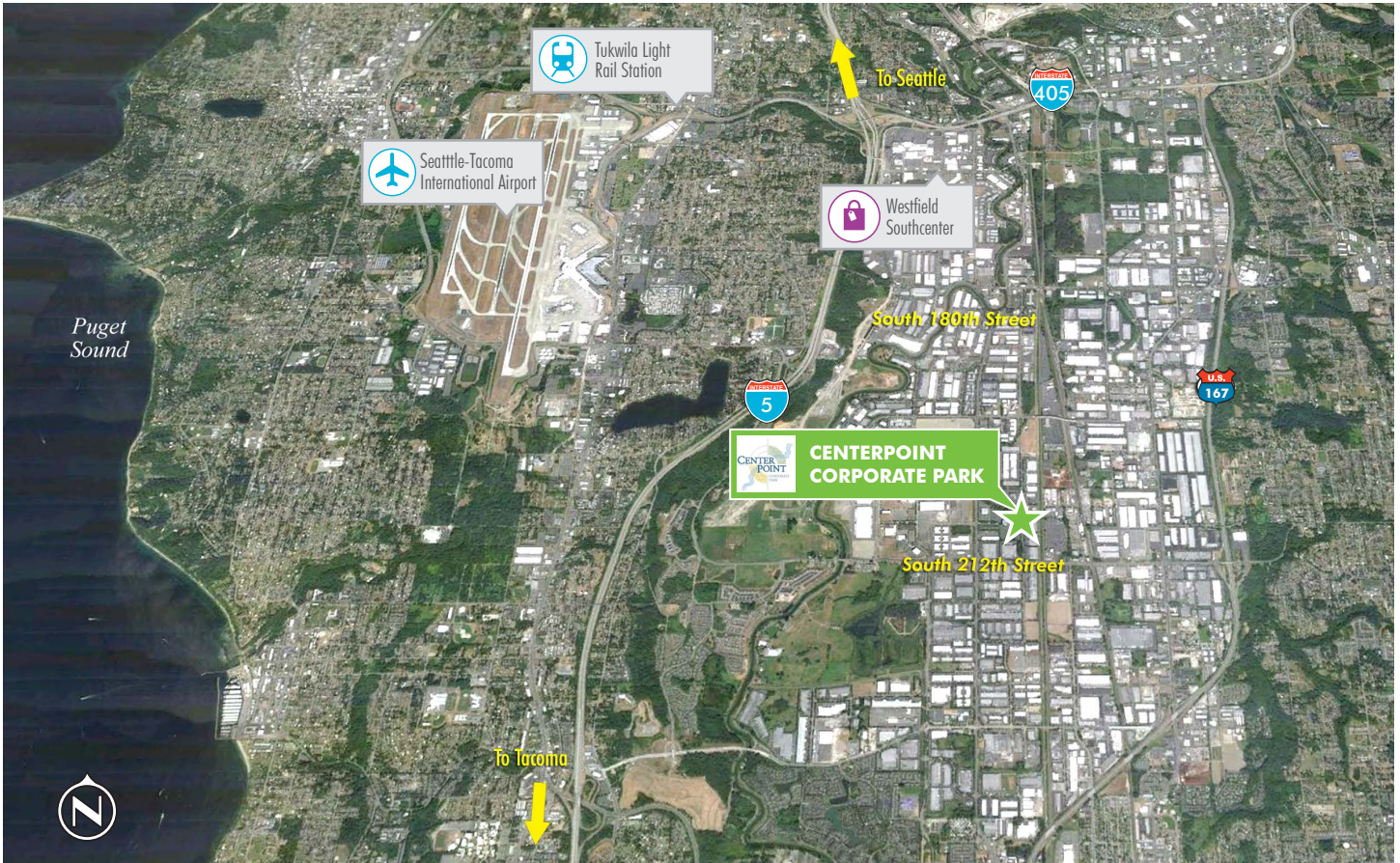


The prestigious three office building project is set on 26 landscaped acres. This park like setting provides a full service campus that creates a productive and dynamic environment. It is this first-class environment and quality construction that have helped the project reach landmark status within the Puget Sound region.

South 204th Street



FOR LEASE CENTERPOINT CORPORATE PARK



TRAVEL TIME/DISTANCE TO MAJOR METRO AREAS	
	Minutes
SOUTHCENTER	5
SEATAC INTERNATIONAL AIRPORT	8
DOWNTOWN SEATTLE	20
DOWNTOWN BELLEVUE	23
DOWNTOWN TACOMA	25

© 2017 CBRE, Inc. All rights reserved. This information has been obtained from sources believed reliable, but has not been verified for accuracy or completeness. You should conduct a careful, independent investigation of the property and verify all information. Any reliance on this information is solely at your own risk. CBRE and the CBRE logo are service marks of CBRE, Inc. and/or its affiliated or related companies in the United States and other countries. All other marks displayed on this document are the property of their respective owners. Photos herein are the property of their respective owners and use of these images without the express written consent of the owner is prohibited. JG 2-17-17