



SIGNAGE AVAILABLE



PRIME OFFICE SPACE AVAILABLE



JOE KING
310.442.3375
jking@madisonpartners.net
License ID #01195833

BOB PEARSON
310.820.7570
bpearson@madisonpartners.net
License ID #01135353



SANTA MONICA BLVD

OVERVIEW

Address	11175 Santa Monica Boulevard
Project Size	75,769 SF
Available	Suite 700 - 8,184 SF
Rental Rate	\$4.00/SF FSG
Parking	3 / 1,000 RSF
Parking Rate	\$170 Unreserved \$250 Reserved

Highlights

- Prime Santa Monica Boulevard location
- Excellent access to both the 405 and 10 freeways
- Outstanding proximity to several restaurant, shopping, banking, and entertainment amenities

PRIME SANTA MONICA BOULEVARD

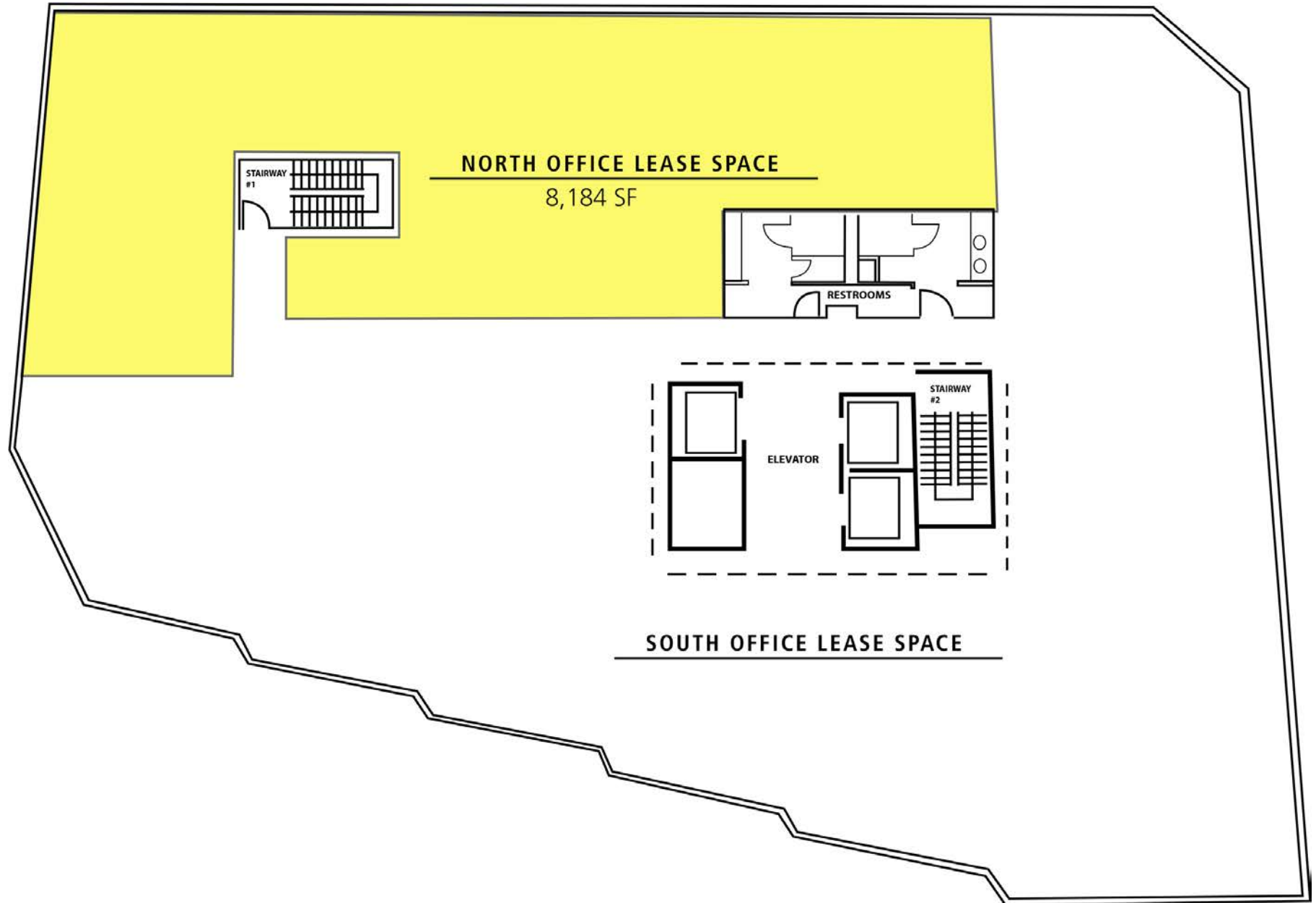
LOCATION



OCEAN VIEWS

SANTA MONICA BLVD

FLOOR PLAN





EXCLUSIVE ADVISOR

MADISON PARTNERS

12121 Wilshire Boulevard, Suite 900
Los Angeles, CA 90025
T: 310.820.5959 | F: 310.826.3410
MadisonPartners.net

FOR LEASING INFORMATION

JOE KING

Executive Vice President
310.442.3375
jking@madisonpartners.net
DRE: 01195833

BOB PEARSON

Executive Vice President
310.820.7570
bpearson@madisonpartners.net
DRE: 01135353

