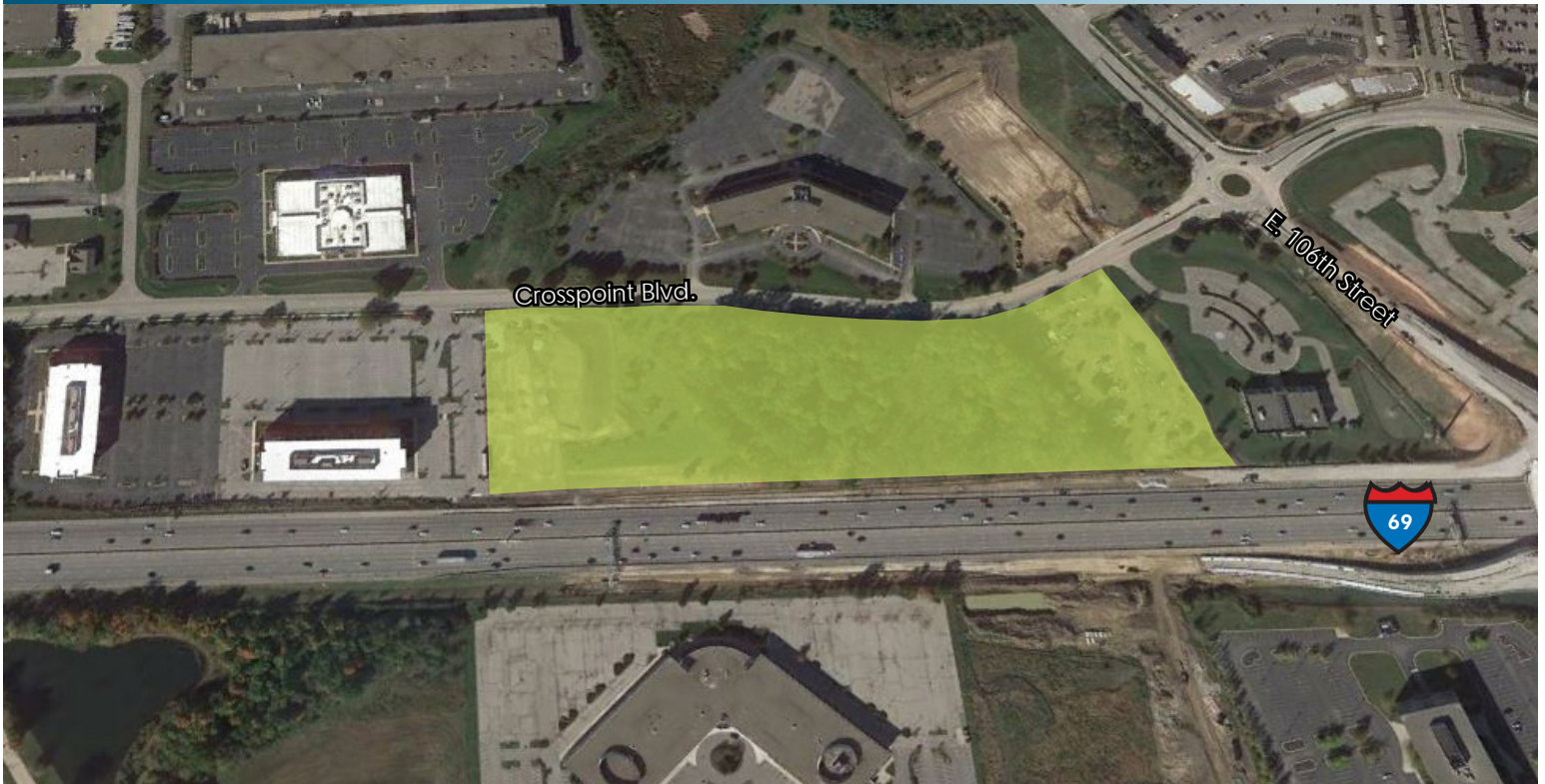


LAND AT CONCOURSE

Land at Concourse at Crosspoint | For Sale or Build to Suit



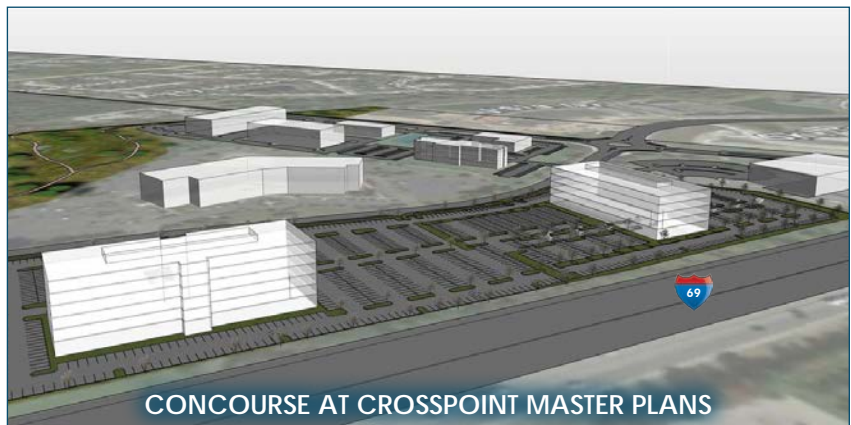
Be in the right place, at the right time.

CONCOURSE AT CROSSPOINT

533,000 SF
future park
expansion

LAND At CONCOURSE

- Located at intersection of 106th Street and Crosspoint Boulevard in planned business park Concourse at Crosspoint
- 14.5 acres of land (divisible)
- Extensive highway frontage on I-69
- Plans for two multi-story buildings; Building 3 to be 150,000 SF and Building 4 to be 140,000 SF
- Planned structured parking
- Easy access from I-465, I-69, and 96th Street
- Class A office space



FOR MORE INFORMATION,
PLEASE CONTACT:

John Vandenberg
Senior Vice President
+1 317 269 1046
john.vandenberg@cbre.com

CBRE, Inc | 101 West Washington Street, Suite 1000 E | Indianapolis, IN 46204 | www.cbre.us/indianapolis

CBRE

© 2017 CBRE, Inc. This information has been obtained from sources believed reliable. We have not verified it and make no guarantee, warranty or representation about it. Any projections, opinions, assumptions or estimates used are for example only and do not represent the current or future performance of the property. You and your advisors should conduct a careful, independent investigation of the property to determine to your satisfaction the suitability of the property for your needs. Photos herein are the property of their respective owners and use of these images without the express written consent of the owner is prohibited.