

SR-8 (North Main Street) & US-422 (Benjamin Franklin Hwy.) Butler, Pennsylvania 16001



Land Available

Approximately 4.85 acres (usable .9 acre and 1.7 acre)

Property Highlights

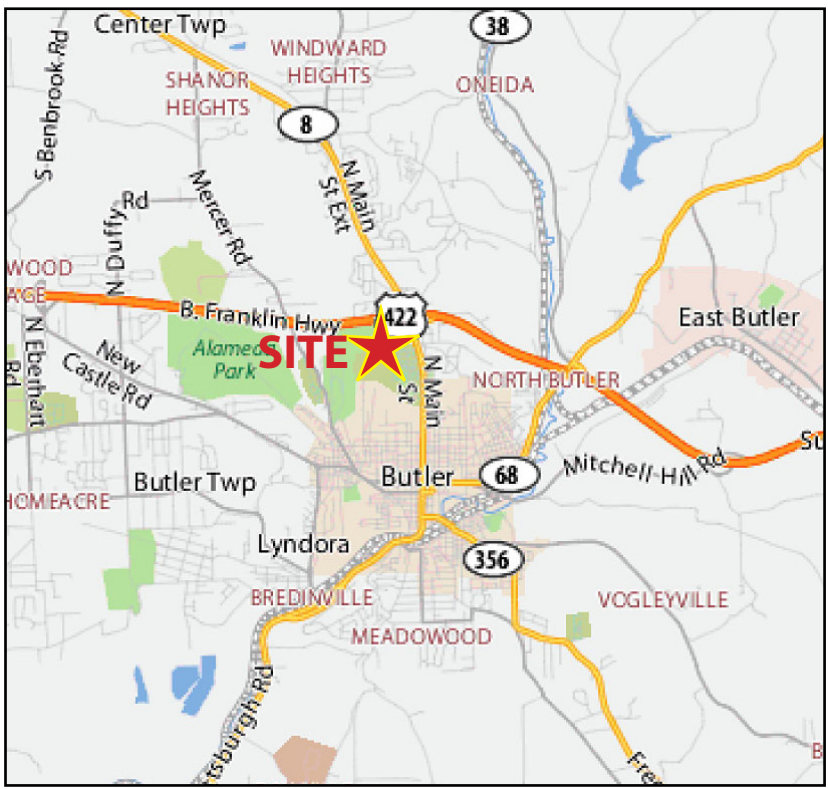
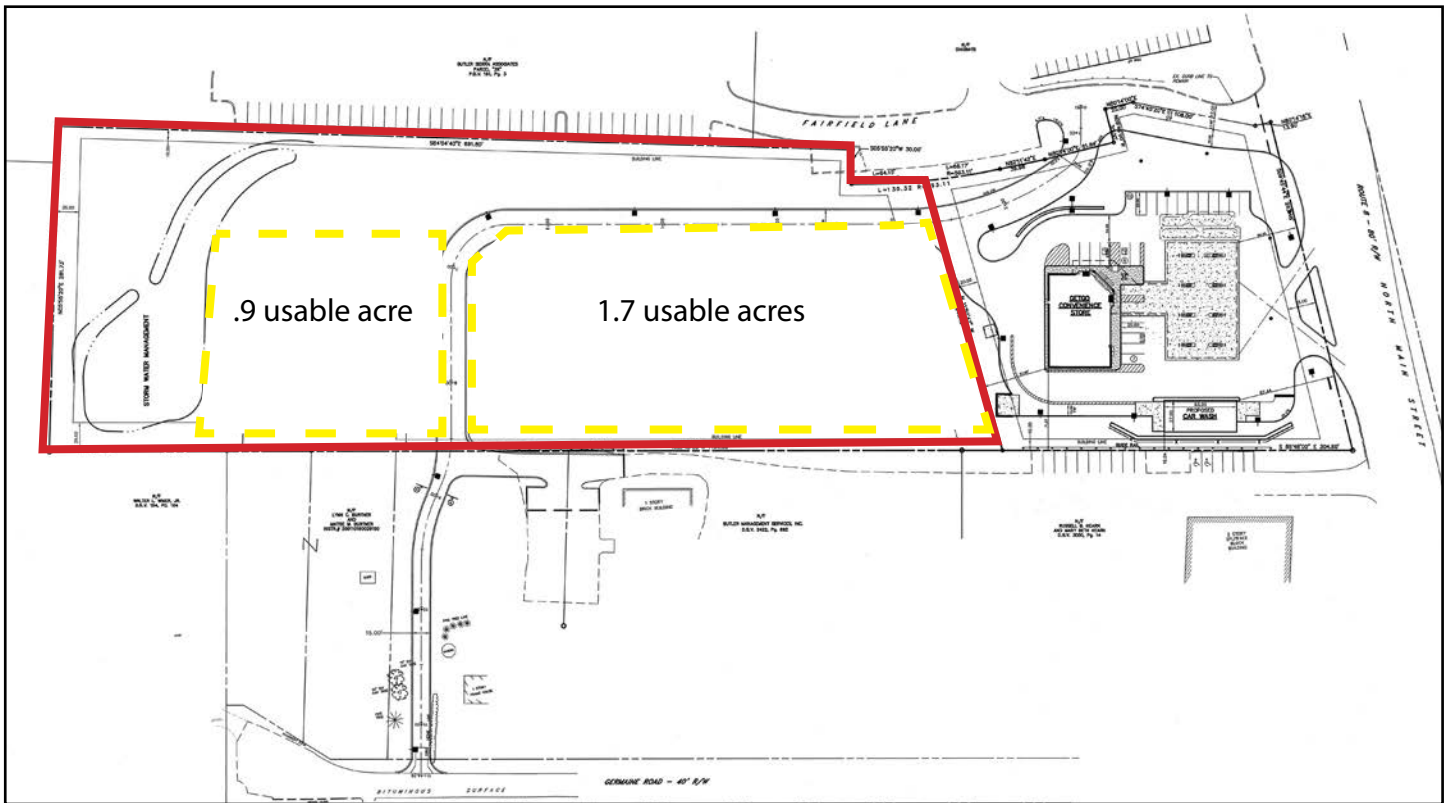
- Great location along SR-8, just off US-422
- Controlled access
- Ideally suited for medical, office, service & retail uses
- Zoned C-2 Convenience Commercial (list of approved uses available upon request)

AVERAGE DAILY TRAFFIC

US-422:	23,022
SR-8:	27,239

DEMOGRAPHICS

	3-MILES	5-MILES
Population:	31,151	45,917
Avg. HH Income:	\$56,877	\$61,923



For more information please contact:

Arthur J. DiDonato, Jr.
 Senior Vice President, Retail Brokerage

Oxford Realty Services, Inc.
 412.261.0200, ext 3436
 adidonato@oxfordrealtyservices.com

OXFORD

REALTY SERVICES, INC.

2545 Railroad Street - Suite 300
 Pittsburgh, PA 15222
 www.oxfordrealtyservices.com

Although all information furnished regarding property for sale, rental or financing is from sources deemed reliable, such information has not been verified, and no express representation is made nor is any to be implied as to the accuracy thereof, and it is submitted subject to errors, omissions, change of price, rental or other conditions, prior sale, lease or financing, or withdrawal without notice. Rental terms and all dimensions are approximate and specifications are subject to change without notice. Oxford Realty Services, Inc., an independent real estate services company.