

# 899 Adams St. St. Helena

## Wine Business Center



**Suite H ±4,400 SF**

**Purchase Price \$4,400,000. Lease Price is \$17,600 plus NNN.**

### FEATURES

- *Fantastic Opportunity to own a Commercial Condominium in Saint Helena*
- *One of the largest units at ±4,400 SF*
- *This 2nd Floor Unit has a kitchen and outdoor balcony. Great, open floor plan.*
- *80 Parking Spaces plus generous street parking*
- *Two walking trails*
- *Two blocks from Safeway and other businesses/restaurants*
- *Two “common” conference rooms for use by owners. One with a Kitchenette  
The larger one can seat 30+*
- *Extremely well maintained and cleaned*



**Thomas Kern**  
(707) 302-4466  
tkern@cnapavalley.com  
Lic.#02024411

**Jeff Feeney**  
(707) 580-5678  
jfeeney@cnapavalley.com  
Lic.#01329335



BROKERS OF THE VALLEY

1040 MAIN ST. #101  
NAPA, CA 94559  
**(707) 224-8454**

**AVAILABLE FOR SALE OR LEASE**

# PHOTO GALLERY



**Thomas Kern**  
(707) 302-4466  
tkern@cnapavalley.com  
Lic.#02024411

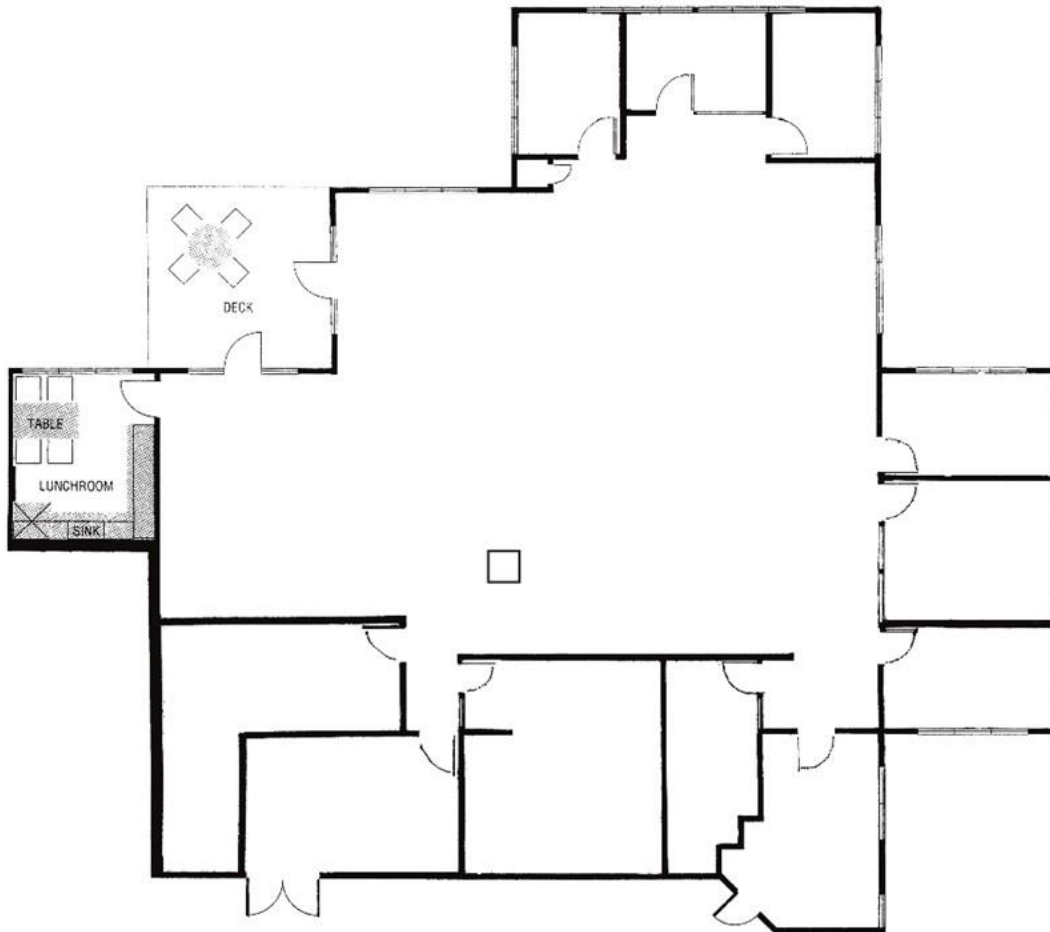
**Jeff Feeney**  
(707) 580-5678  
jfeeney@cnapavalley.com  
Lic.#01329335



BROKERS OF THE VALLEY

1040 MAIN ST. #101  
NAPA, CA 94559  
**(707) 224-8454**

# FLOOR PLAN



Thomas Kern  
(707) 302-4466  
tkern@cnapavalley.com  
Lic.#02024411

Jeff Feeney  
(707) 580-5678  
jfeeney@cnapavalley.com  
Lic.#01329335



BROKERS OF THE VALLEY

1040 MAIN ST. #101  
NAPA, CA 94559  
**(707) 224-8454**