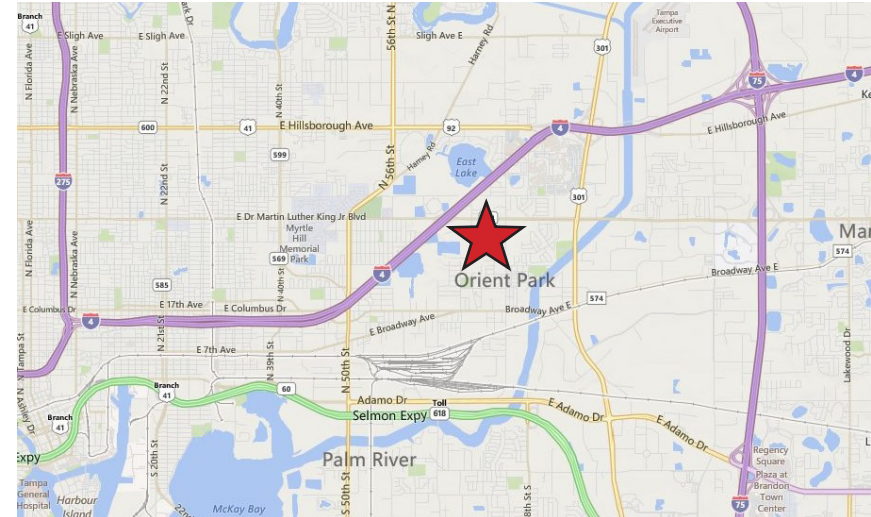


Brandywine Business Center

3801 & 3803 Corporex Park Drive | Tampa, Florida 33619



PROPERTY HIGHLIGHTS

- East Side Industrial Submarket
- Office & flex suites
- Located in Corporex Park, on the corner of E. Dr. MLK Jr. Blvd & Corporex Park Drive in Tampa, Florida
- Garden style suites with private entry & large glass paned windows
- Tenant controlled HVAC
- Parking ratio: 3.50/1,000 SF leased
- 24/7 tenant access to suites
- 14'-18' ceiling heights with at-grade and dock-high loading available
- Excellent location: less than 5 minutes to I-4, I-75, US -41, US-301, SR-60, Dr. MLK Jr Blvd, and Selmon Expressway!

Exclusively Leased By

Ryan McCurdy

Ryan.McCurdy@FranklinSt.Com
813.559.2011

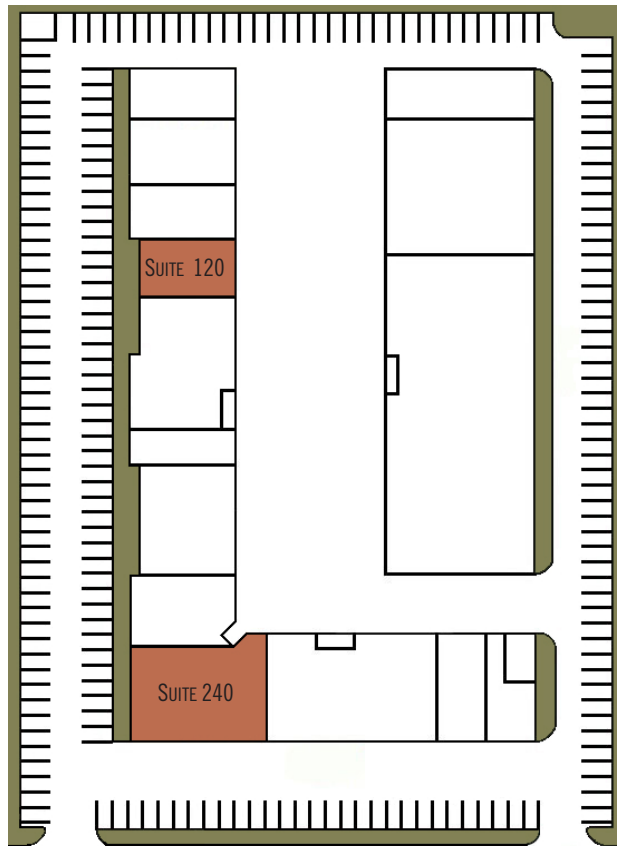
Clay Wommack

Clay.Wommack@FranklinSt.Com
813.345.5886

Licensed Real Estate Broker

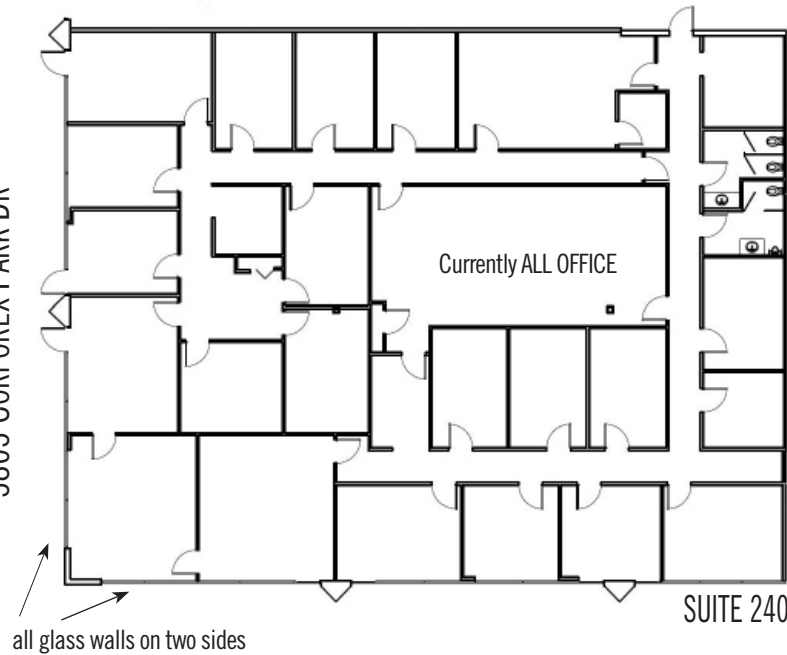
Brandywine Business Center

3801 & 3803 Corporex Park Drive | Tampa, Florida 33619



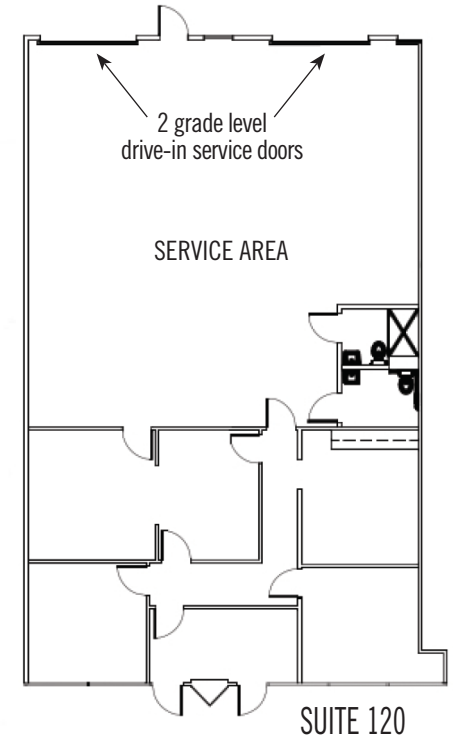
3801 CORPOREX PARK DR

3803 CORPOREX PARK DR



all glass walls on two sides

SUITE 240



2 grade level
drive-in service doors

SERVICE AREA

SUITE 120

SUITE	SF	AVAILABLE	TYPE
120	2,891	Now	Flex
240	6,735	Now	Office

Exclusively Leased By

Ryan McCurdy
Ryan.McCurdy@FranklinSt.Com
813.559.2011

Clay Wommack
Clay.Wommack@FranklinSt.Com
813.345.5886

Licensed Real Estate Broker

No warranty of representation, expressed or implied, is made to the accuracy of information contained herein, and same is submitted subject to errors, change of price, rental or other conditions, withdrawal without notice, and to any special listing conditions imposed by our principals.

FranklinSt.com t: 813.839.7300 f: 813.839.7330 e: info@FranklinSt.com