

# TUSTIN EXECUTIVE CENTER

17542 E. 17TH STREET, TUSTIN, CA



View Site Specific COVID-19 Prevention Plan

# PROPERTY HIGHLIGHTS



A four (4) story, 90,932 square foot, Class A multi-tenant office building



Ideal Central Orange County Location



Flexible Suite Sizes Available



Excellent Glass Line



Located on the 17th Street Corridor with tons of walkable amenities



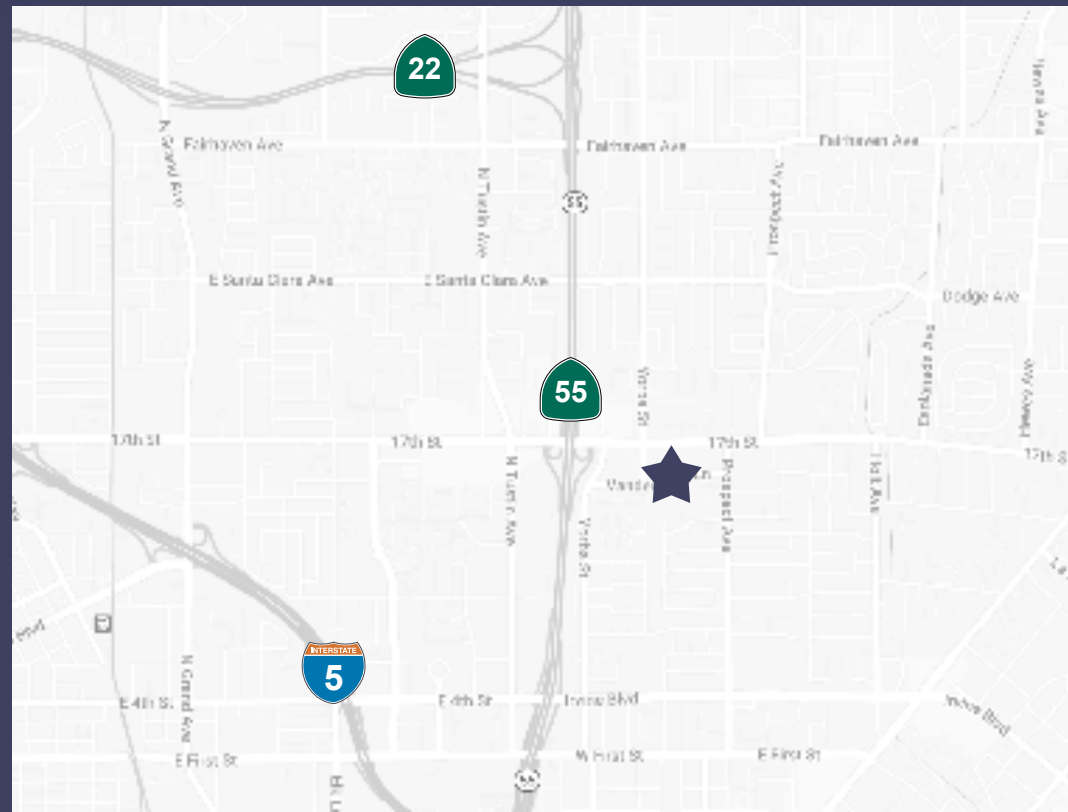
Structured and Surface Parking Available



On-site Maintenance Personnel



Superb access to the 55, 5 and 22 Freeways





## FLOOR 1

SUITE	SF
100	3,567 SF
105	3,590 SF
100/105	7,157 SF (combined)
140	2,084 SF
150	6,043 SF
140/150	8,127 SF (combined)

### JASON PALDA

Director  
+1 949 533 9090  
jason.palda@cushwake.com  
Lic. 01820370

### CLINT GALLIVAN

Associate  
+1 949 955 7659  
clint.gallivan@cushwake.com  
Lic. 02078116

### JOHN GALLIVAN

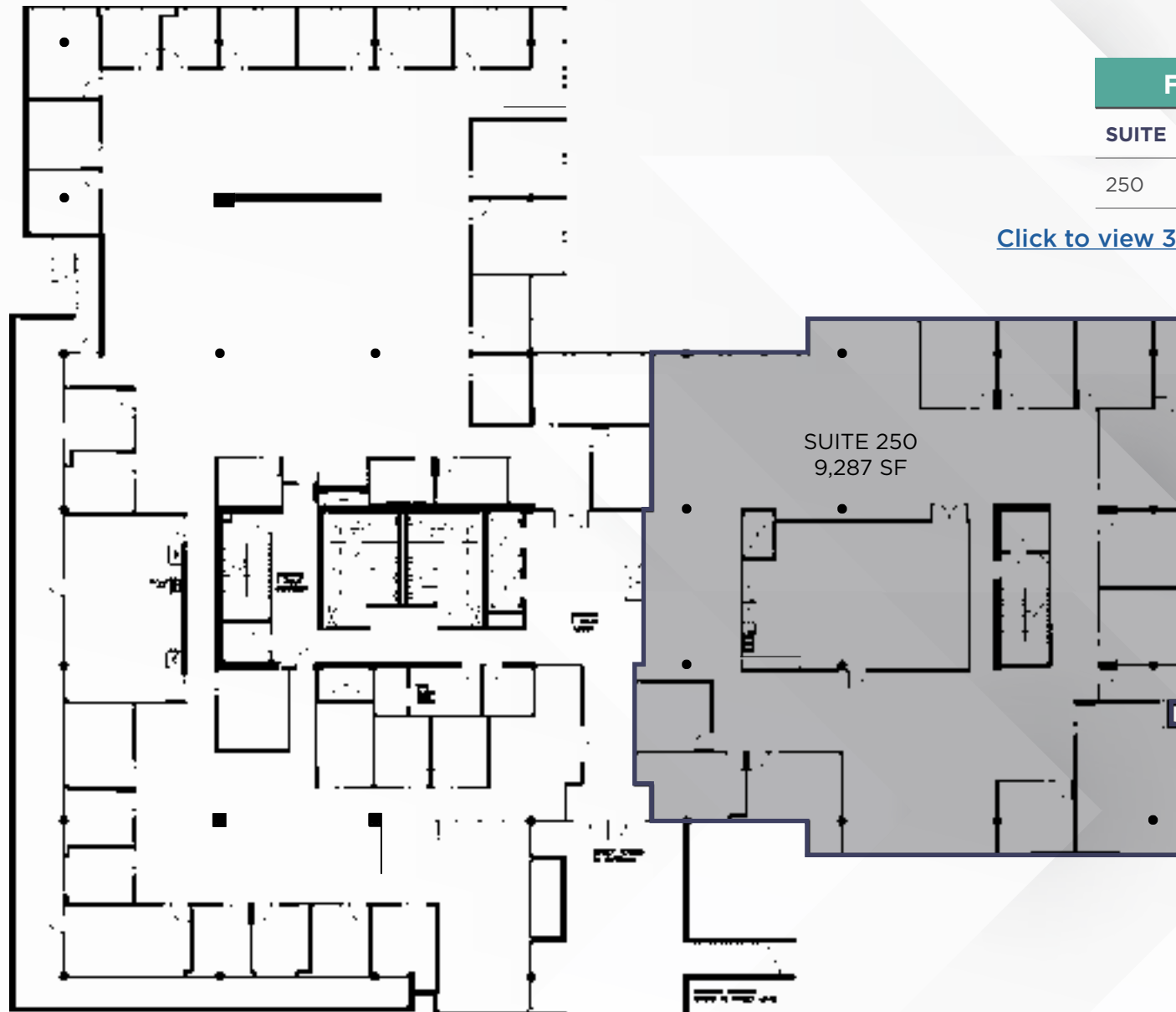
Executive Director, MCR, MCR.w  
+1 949 955 7647  
john.gallivan@cushwake.com  
Lic. 01096309



## FLOOR 2

SUITE	SF
250	9,287 SF

[Click to view 3-D Video/Plan](#)



 VACANT

 AVAILABLE SOON

### JASON PALDA

Director  
+1 949 533 9090  
jason.palda@cushwake.com  
Lic. 01820370

### CLINT GALLIVAN

Associate  
+1 949 955 7659  
clint.gallivan@cushwake.com  
Lic. 02078116

### JOHN GALLIVAN

Executive Director, MCR, MCR.w  
+1 949 955 7647  
john.gallivan@cushwake.com  
Lic. 01096309





## FLOOR 3

SUITE	SF
330	6,138 SF

[Click to view 3-D Video/Plan](#)



VACANT



AVAILABLE SOON

### JASON PALDA

Director  
+1 949 533 9090  
jason.palda@cushwake.com  
Lic. 01820370

### CLINT GALLIVAN

Associate  
+1 949 955 7659  
clint.gallivan@cushwake.com  
Lic. 02078116

### JOHN GALLIVAN

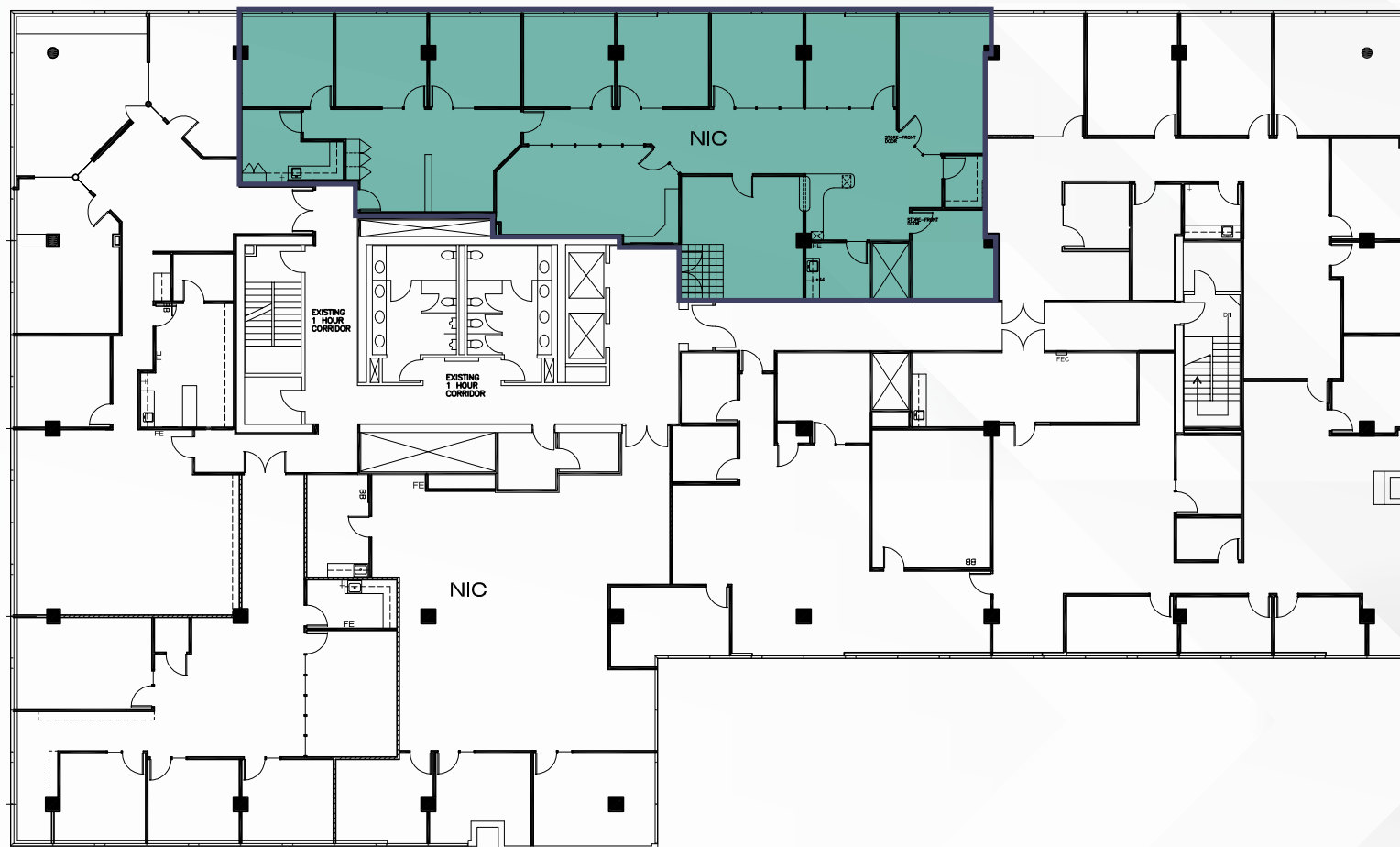
Executive Director, MCR, MCR.w  
+1 949 955 7647  
john.gallivan@cushwake.com  
Lic. 01096309



## FLOOR 4

SUITE	SF
410	4,230 SF

SUITE 410  
4,230 SF



 VACANT  AVAILABLE SOON

### JASON PALDA

Director  
+1 949 533 9090  
jason.palda@cushwake.com  
Lic. 01820370

### CLINT GALLIVAN

Associate  
+1 949 955 7659  
clint.gallivan@cushwake.com  
Lic. 02078116

### JOHN GALLIVAN

Executive Director, MCR, MCR.w  
+1 949 955 7647  
john.gallivan@cushwake.com  
Lic. 01096309





#### ENDERLE CENTER

Charleston Provence  
AA Jewel Box  
Chemers Gallery  
Decker's Fine Gifts & Collectibles  
Discoveries Contemporary Crafts  
H. Foster & Jackson  
Justin Porterfield, Ltd  
Winston's Estate Gallery  
Fitness Fixe  
Fusion Hair Salon  
Hair Industry: The Salon  
Rebecca Pelletier Interior Designer  
Dr. Cynthia Broady Optometry

Dyers Hair Care

Fancy Nails

Kelton's Salon

Studio J Pilates

Belacan Grill

Coffee Grinder

Crab Cooker

El Torito

Zov's Bakery and Cafe

17th Street Bar and Grill

Zov's Bistro

A Perfect Fit - Fine Lingerie

Frank's Menswear

La Galleria

Tina Marie's Brighton Collection

Touch of Class Refinery

Designer Kitchens, Inc.

Once Upon a Storybook

J. Ludwig Salon

Mr. Jill's Body Firm

Thomas Edward Salon

#### TUSTIN'S FRENCH QUARTER

Dollar Tree

Dream Dinners

ET Beauty Supply & Nail Salon

Exit Realty

#### OAK TREE PLAZA

#### TUSTIN EXECUTIVE CENTER

17542 E. 17TH STREET, TUSTIN, CA

HMC Weight Loss

Ideal Spine & Rehab

Jesse Daniel Salon

Joghurt Frozen Yogurt Haus

Lamppost Pizza

Little Gym of Tustin

Marshalls

One West Bank

Royal Tustin Cleaners

Sandy's Threading & Beauty

Starbucks

State Farm Insurance

Subway Sandwiches

MEA Hair & Makeup

Mrs. Lee Crystal Visions

New Smile Dental

Relax Foot Spa

Uplift

Wyn Salon

Chase ATM

#### OAK TREE PLAZA

Ono Ono Hawaiian BBQ

Oscar's Deli & Grill

Postal Annex

Uoko Japanese Cuisine

US Cleaners

#### JASON PALDA

Director  
+1 949 533 9090  
jason.palda@cushwake.com  
Lic. 01820370

#### CLINT GALLIVAN

Associate  
+1 949 955 7659  
clint.gallivan@cushwake.com  
Lic. 02078116

#### JOHN GALLIVAN

Executive Director, MCR, MCR.w  
+1 949 955 7647  
john.gallivan@cushwake.com  
Lic. 01096309



# TUSTIN EXECUTIVE CENTER

17542 E. 17TH STREET, TUSTIN, CA

For more information, please contact

---

## **JASON PALDA**

Director  
+1 949 533 9090  
jason.palda@cushwake.com  
Lic. 01820370

## **CLINT GALLIVAN**

Associate  
+1 949 955 7659  
clint.gallivan@cushwake.com  
Lic. 02078116

## **JOHN GALLIVAN**

Executive Director, MCR, MCR.w  
+1 949 955 7647  
john.gallivan@cushwake.com  
Lic. 01096309



©2020 Cushman & Wakefield. All rights reserved. The information contained in this communication is strictly confidential. This information has been obtained from sources believed to be reliable but has not been verified. NO WARRANTY OR REPRESENTATION, EXPRESS OR IMPLIED, IS MADE AS TO THE CONDITION OF THE PROPERTY (OR PROPERTIES) REFERENCED HEREIN OR AS TO THE ACCURACY OR COMPLETENESS OF THE INFORMATION CONTAINED HEREIN, AND SAME IS SUBMITTED SUBJECT TO ERRORS, OMISSIONS, CHANGE OF PRICE, RENTAL OR OTHER CONDITIONS, WITHDRAWAL WITHOUT NOTICE, AND TO ANY SPECIAL LISTING CONDITIONS IMPOSED BY THE PROPERTY OWNER(S). ANY PROJECTIONS, OPINIONS OR ESTIMATES ARE SUBJECT TO UNCERTAINTY AND DO NOT SIGNIFY CURRENT OR FUTURE PROPERTY PERFORMANCE.