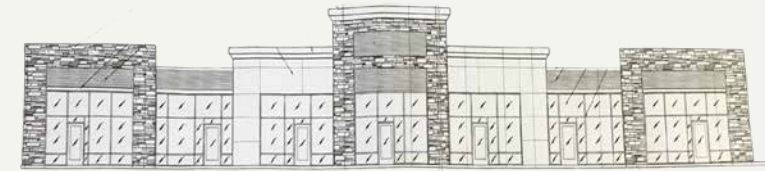
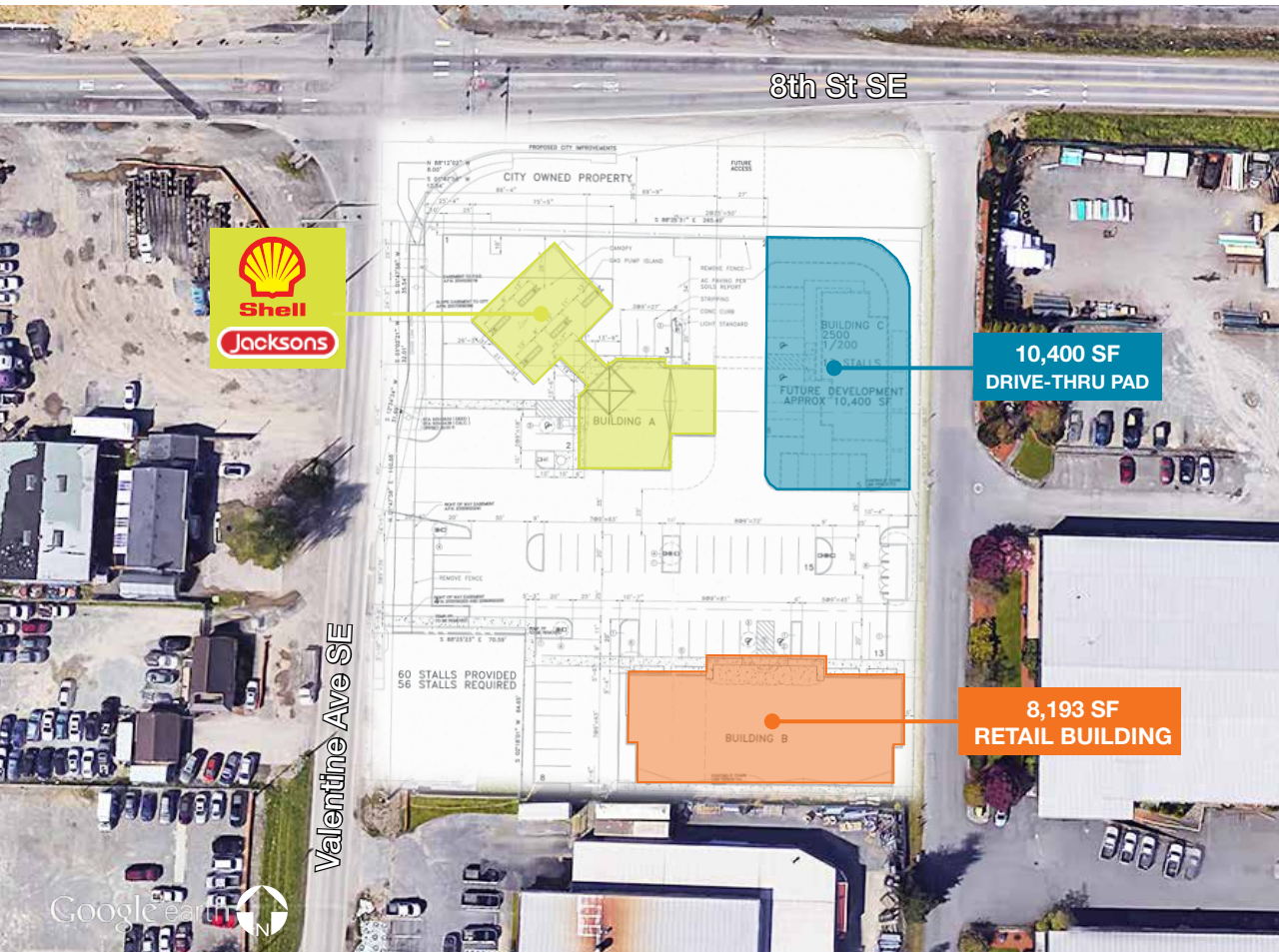


Pacific Market Place

1151 Valentine Ave SE, Pacific, WA 98047



PROPOSED RENDERING



CURRENTLY UNDER CONSTRUCTION

FOR LEASE

New Retail Development anchored by Jackson's and Shell Station

Cramer Foster
253.722.1423
cfoster@kiddermathews.com

Jeff Kraft
253.722.1405
jkraft@kiddermathews.com

kiddermathews.com

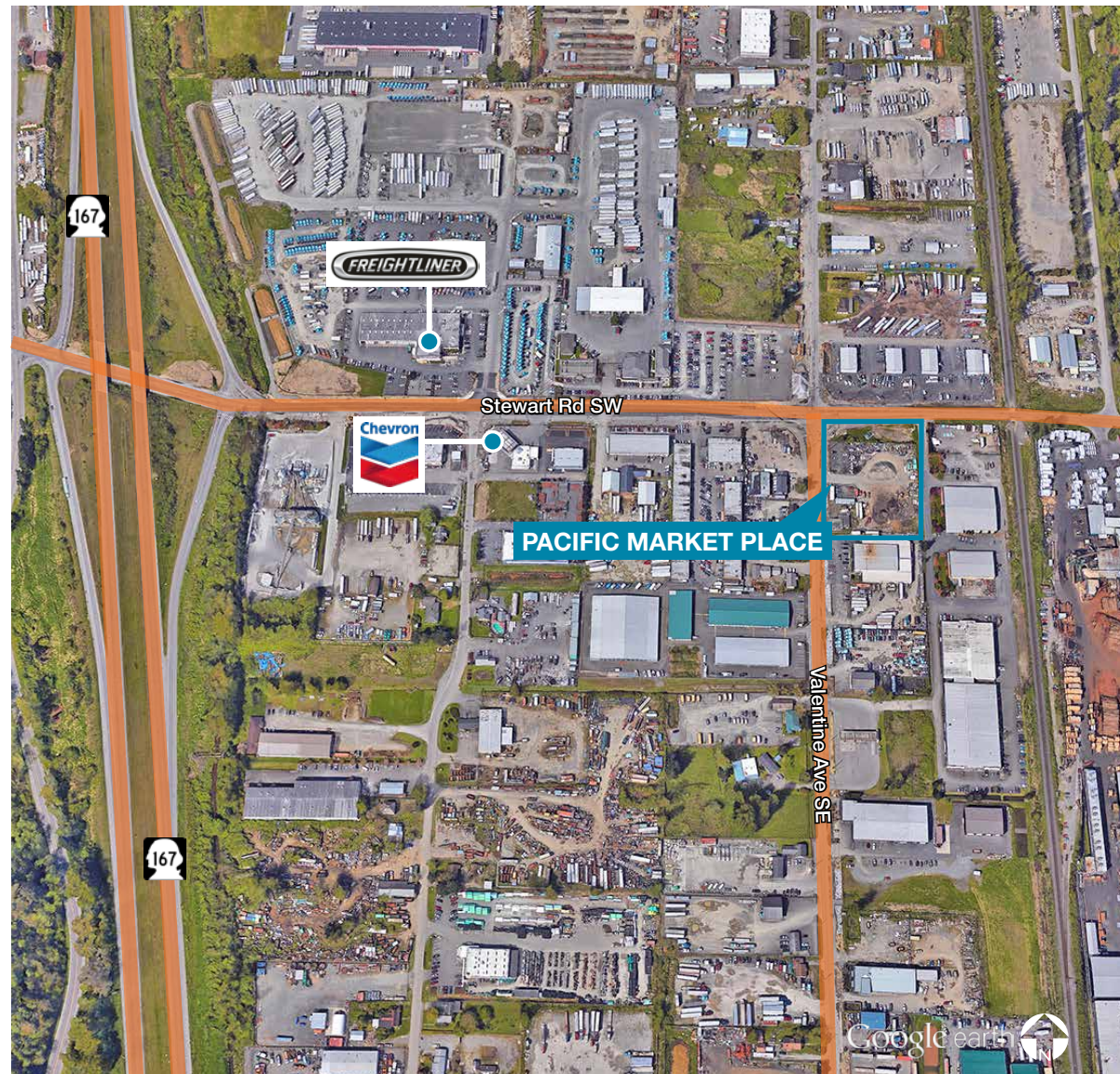
km Kidder Mathews

Pacific Market Place

1151 Valentine Ave SE, Pacific, WA 98047

Features

AVAILABLE	±8,193 SF building available (Divisible to ±1,500 SF) 10,400 SF pad site with binding site plan approval for 2,500 SF drive-thru building
RATE	\$21.00 PSF + NNN on shop space Call for rates on PAD
LOCATION	Located on the SEC of Stewart Rd SW & Valentine Ave SE Close proximity to Amazon Fulfillment Center and Hwy 167
ACCESS	4 way lighted intersection with multiple access points
DEMOGRAPHICS	Stewart Rd SW is the main arterial connecting Lakeland Hills to Hwy 167. 10,000+ residents with \$90k median income
ANTICIPATED COMPLETION	September 2018



Cramer Foster
253.722.1423
cfoster@kiddermathews.com

Jeff Kraft
253.722.1405
jkraft@kiddermathews.com

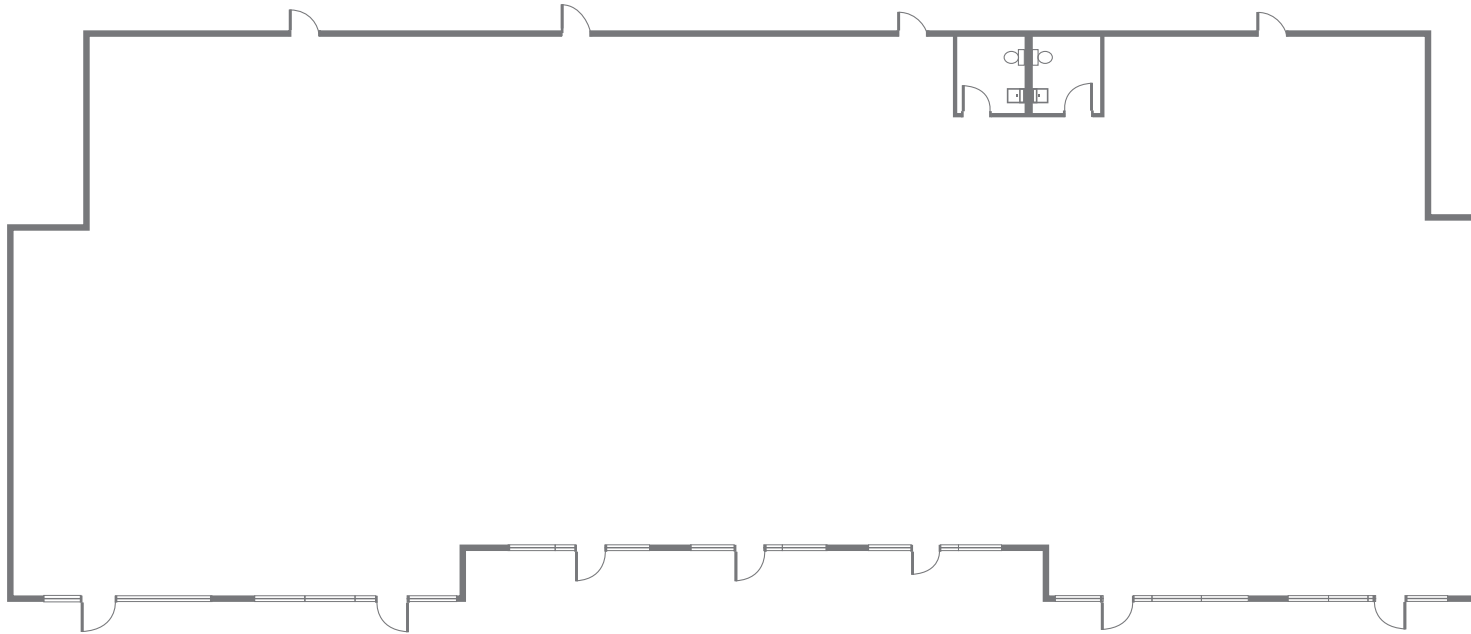
kiddermathews.com



Pacific Market Place

1151 Valentine Ave SE, Pacific, WA 98047

Building Plan



AVAILABLE SPACE

±8,196 SF

Divisible to ±1,500 SF

Cramer Foster

253.722.1423

cfoster@kiddermathews.com

Jeff Kraft

253.722.1405

jkraft@kiddermathews.com

kiddermathews.com



Pacific Market Place

1151 Valentine Ave SE, Pacific, WA 98047



Cramer Foster
253.722.1423
cfoster@kiddermathews.com

Jeff Kraft
253.722.1405
jkraft@kiddermathews.com

kiddermathews.com



This information supplied herein is from sources we deem reliable. It is provided without any representation, warranty or guarantee, expressed or implied as to its accuracy. Prospective Buyer or Tenant should conduct an independent investigation and verification of all matters deemed to be material, including, but not limited to, statements of income and expenses. Consult your attorney, accountant, or other professional advisor.