

AVAILABLE FOR LEASE

9950 W. 190TH STREET, MOKENA, ILLINOIS



BUILDING SPECIFICATIONS

BUILDING SIZE:	± 36,520 SF
AVAILABLE SPACE:	± 18,240 SF
OFFICE:	± 2,600 SF
CEILING HEIGHT:	21.5'
LOADING:	2 exterior docks 1 full size drive-in door
POWER:	1200 amps
REAL ESTATE TAXES:	\$2.06 psf (2017 paid in 2018)
LEASE RATE:	\$6.95 psf NNN



FEATURES

- 3 minutes to 4-way interchange on I-80 at La Grange Road
- Many amenities located nearby at the corner of 191st Street and La Grange Road
- Precast Construction
- Will County real estate taxes

**FOR ADDITIONAL
INFORMATION,
PLEASE CONTACT:**

ZEKE ROWAN

Senior Associate

zrowan@darwinrealty.com

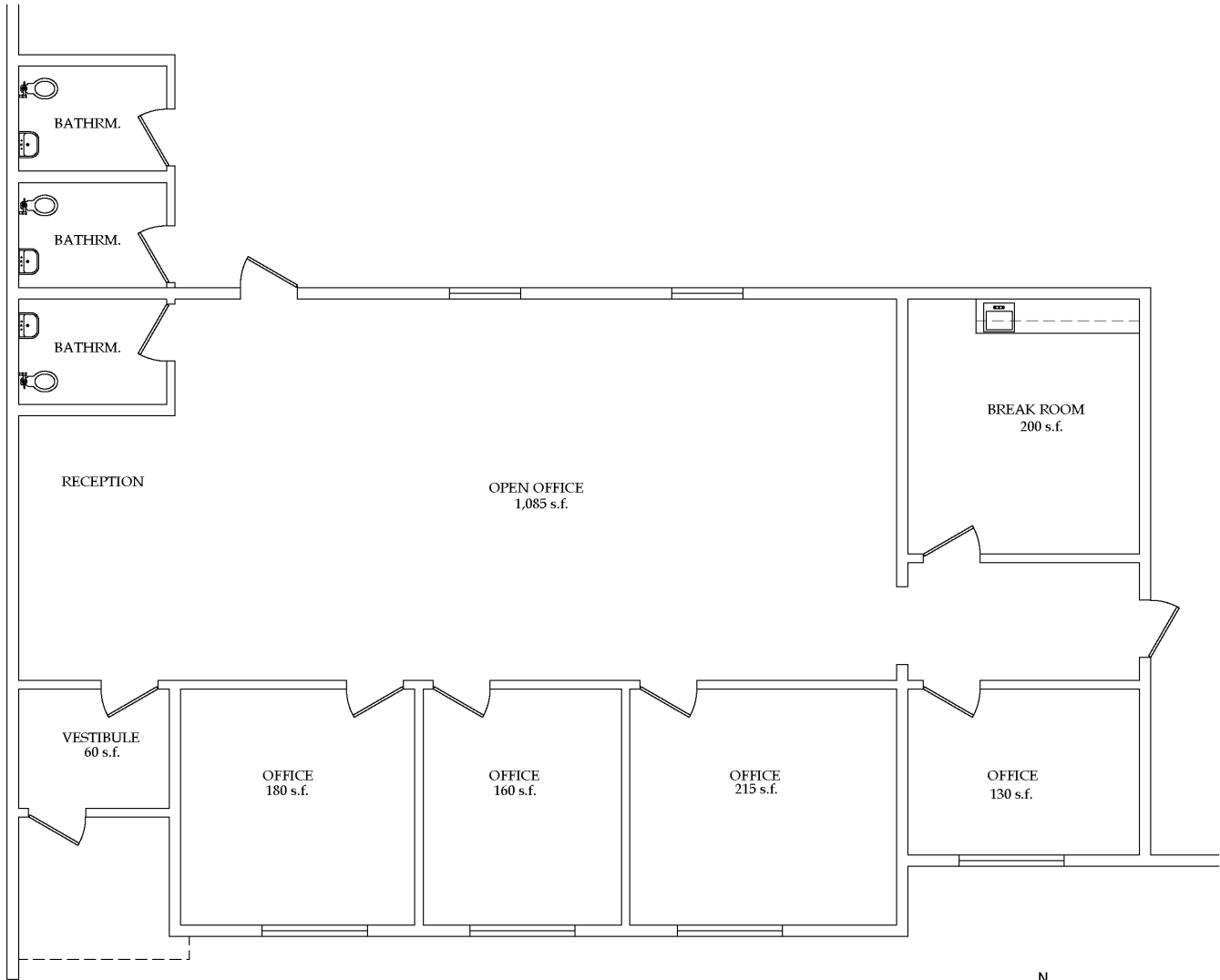
ADAM HAEFNER

Director of Brokerage Services

ahaefner@darwinrealty.com

AVAILABLE FOR LEASE

9950 W. 190TH STREET, MOKENA, ILLINOIS



N
PARTIAL FLOOR PLAN
SCALE: 3/8" = 1'-0"

FOR ADDITIONAL INFORMATION, PLEASE CONTACT:

ZEKE ROWAN Senior Associate zrowan@darwinrealty.com	ADAM HAEFNER Director of Brokerage Services ahaefner@darwinrealty.com
--	--

AVAILABLE FOR LEASE

9950 W. 190TH STREET, MOKENA, ILLINOIS

AREA AMENITIES



FOR ADDITIONAL
INFORMATION,
PLEASE CONTACT:

ZEKE ROWAN
Senior Associate
zrowan@darwinrealty.com

ADAM HAEFNER
Director of Brokerage Services
ahaefner@darwinrealty.com