

# Executive Industrial Park 2,700 Sq. Ft. Warehouse FOR LEASE



**6201 Johns Road, Suite 3 • Tampa, FL 33634**



<b>SPACE SIZE:</b>	2,700 Sq. Ft.
<b>OFFICE:</b>	1,350 Sq. Ft.
<b>A/C WAREHOUSE:</b>	1,350 Sq. Ft.
<b>CLEAR HEIGHT:</b>	14'
<b>LOADING DOORS:</b>	1 Van High
<b>ZONING:</b>	M
<b>SPRINKLER:</b>	Standard Wet System
<b>CONSTRUCTION:</b>	Concrete Block
<b>LEASE RATE:</b>	\$8.75 NNN



FOR MORE INFORMATION CONTACT:

**Industrial Property Group, Inc.**

Licensed Real Estate Broker

2202 N. Westshore Blvd. • Suite 200 • Tampa, FL 33607

**JOHN AYERS, CCIM**

Cell: 813.690.6539

[jayers@ccim.net](mailto:jayers@ccim.net)

[www.ipgcommercialrealty.com](http://www.ipgcommercialrealty.com)

**CHRISTINA PETTI**

Cell: 813.245.1246

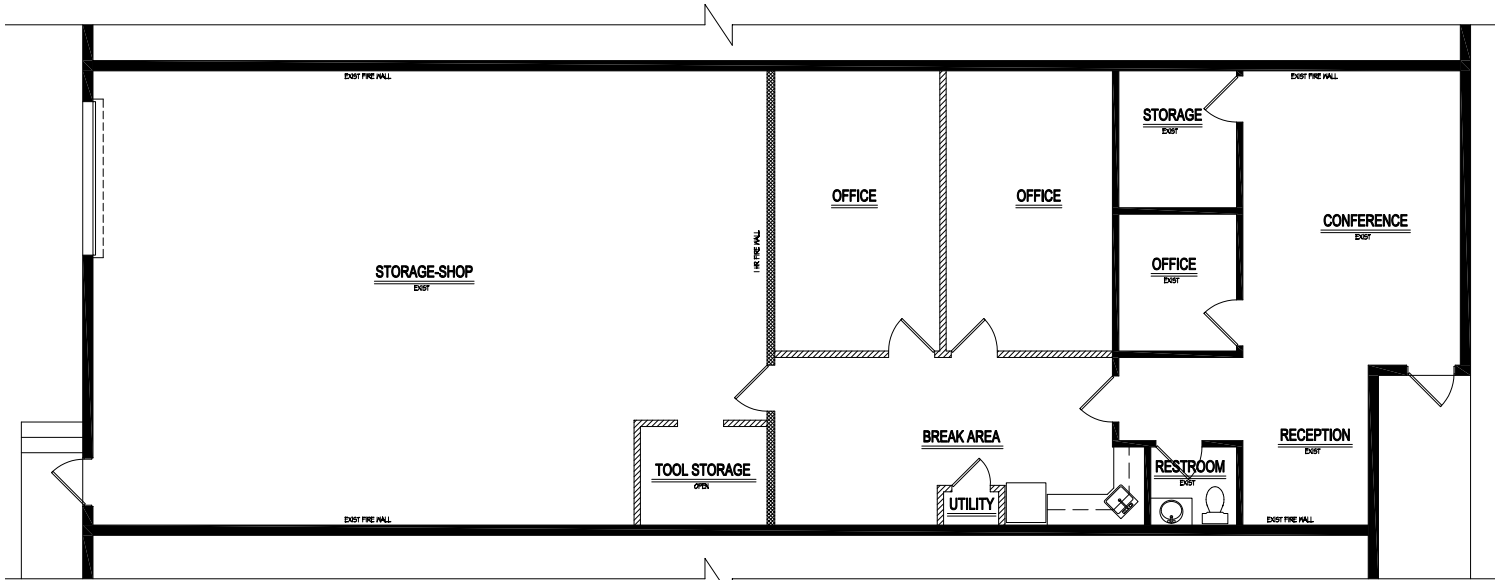
[christina@ipgcommercialrealty.com](mailto:christina@ipgcommercialrealty.com)

No warranty or representation, expressed or implied, is made as to the accuracy of the information contained herein, and same is submitted subject to errors, omissions, change of price, rental or other conditions, withdrawal without notice, and to any special listing conditions imposed by our principals.

# Executive Industrial Park

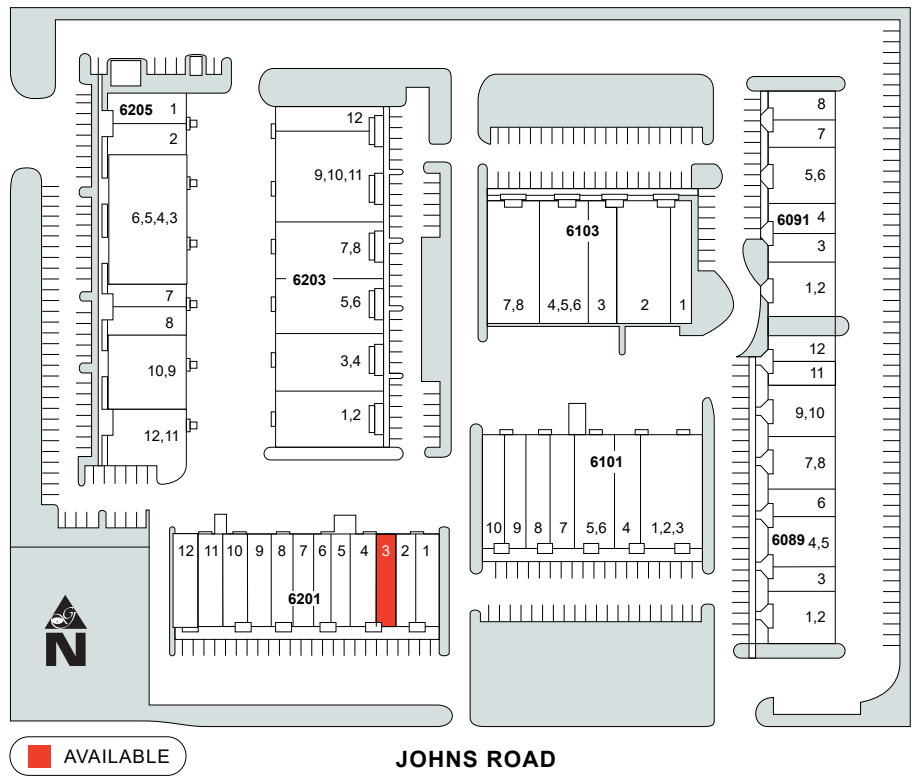
6201 Johns Road, Suite 3

Tampa, FL 33634



**SPACE PLAN**

**SITE PLAN**



FOR MORE INFORMATION CONTACT:

**Industrial Property Group, Inc.**

Licensed Real Estate Broker

2202 N. Westshore Blvd. • Suite 200 • Tampa, FL 33607

**JOHN AYERS, CCIM**

Cell: 813.690.6539

jayers@ccim.net

[www.ipgcommercialrealty.com](http://www.ipgcommercialrealty.com)

**CHRISTINA PETTI**

Cell: 813.245.1246

christina@ipgcommercialrealty.com

No warranty or representation, expressed or implied, is made as to the accuracy of the information contained herein, and same is submitted subject to errors, omissions, change of price, rental or other conditions, withdrawal without notice, and to any special listing conditions imposed by our principals.