

1725 WOODLANDS DRIVE
MAUMEE, OH 43537

VACANT LAND FOR SALE
1.25 Acres Available



**SIGNATURE
ASSOCIATES**
KNOW SIGNATURE | KNOW RESULTS

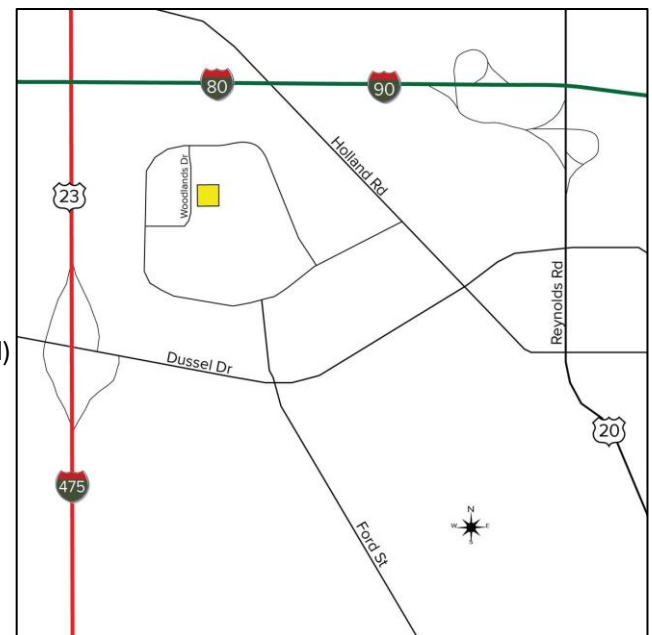
FULL-SERVICE COMMERCIAL REAL ESTATE

DEVELOPMENT LAND



GENERAL INFORMATION

Sale Price:	\$150,000 (\$120,000/Acre)
Acreage:	1.25
Dimensions:	Irregular
Closest Cross Street:	Indian Wood Circle
County:	Lucas
Zoning:	C-M
Easements:	Driveway and parking lot (to be created)
Curb Cuts:	1 - Woodlands
Topography:	Flat
Survey Available:	Yes
Environmental Report:	No
Soil Test Available:	No



For more information, please contact:

ROBERT P. MACK, CCIM, SIOR
(419) 249 6301 or (419) 466 6225
rpmack@signatureassociates.com

MEGAN MALCZEWSKI, CCIM, SIOR
(419) 249 6314 or (419) 215 1008
mmalczewski@signatureassociates.com

SIGNATURE ASSOCIATES
Four SeaGate, Suite 608
Toledo, Ohio 43604
www.signatureassociates.com

1725 Woodlands Drive, Maumee, OH 43537

Vacant Land For Sale

1.25
Acres
AVAILABLE

PROPERTY DESCRIPTION

Drainage: Sewer system

Improvements: Parking lot

Restrictions: Of record

Sign on Property: Yes

Adjacent Land: Arrowhead Park

2022 TRAFFIC COUNTS (TWO-WAY)

19,150 W. Dussel Drive

5,940 Arrowhead Road

2022 DEMOGRAPHICS

	POPULATION	MED. HH INCOME
1 MILE	7,111	\$62,923
3 MILE	54,052	\$67,832
5 MILE	133,319	\$68,077

UTILITIES

Electric: Toledo Edison

Gas: Columbia Gas

Water: City of Maumee

Sanitary Sewer: City of Maumee

Storm Sewer: City of Maumee

2022 REAL ESTATE TAXES

TD: 36

Parcel: 40852

Assessor Number: 43297049

Total Annual Taxes: \$5,720.75

Comments:

- Partially wooded lot.
- Located in the center of Arrowhead Business Park.
- All utilities available.
- Existing driveway and parking lot; shared agreement to be established.
- Adjacent to Arrowhead Park's Eppstein Park.

For more information, please contact:

ROBERT P. MACK, CCIM, SIOR
(419) 249 6301 or (419) 466 6225
rpmack@signatureassociates.com

MEGAN MALCZEWSKI, CCIM, SIOR
(419) 249 6314 or (419) 215 1008
mmalczewski@signatureassociates.com

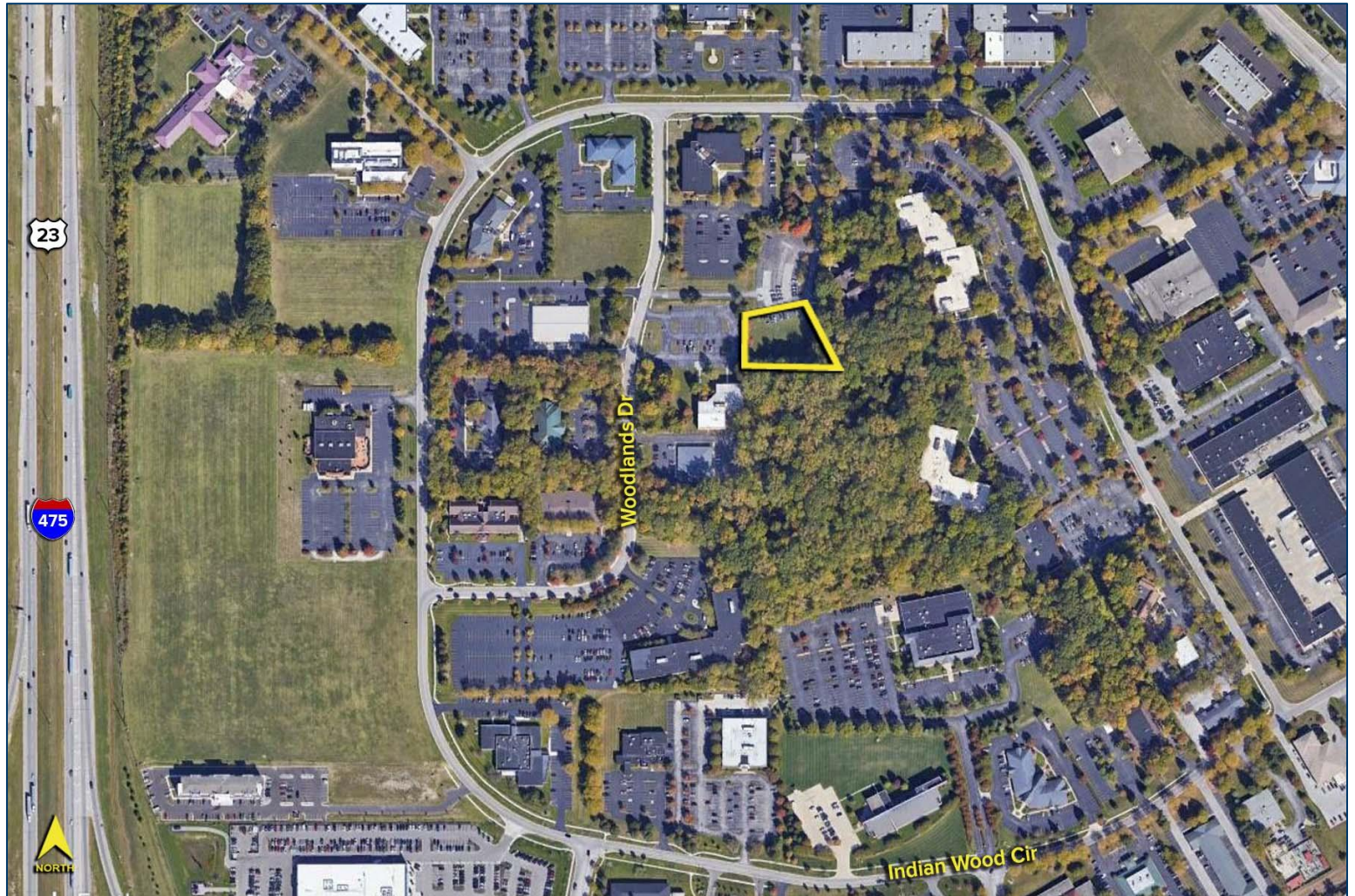
SIGNATURE ASSOCIATES
Four SeaGate, Suite 608
Toledo, Ohio 43604
www.signatureassociates.com

1725 Woodlands Drive, Maumee, OH 43537

Vacant Land For Sale

1.25
Acres
AVAILABLE

Aerial Map



For more information, please contact:

ROBERT P. MACK, CCIM, SIOR
(419) 249 6301 or (419) 466 6225
rpmack@signatureassociates.com

MEGAN MALCZEWSKI, CCIM, SIOR
(419) 249 6314 or (419) 215 1008
mmalczewski@signatureassociates.com

SIGNATURE ASSOCIATES
Four SeaGate, Suite 608
Toledo, Ohio 43604
www.signatureassociates.com