

As the exclusive sublease agent, Newmark Knight Frank is pleased to offer the following space for sublease

|                      |                        |  |
|----------------------|------------------------|--|
| <b>FLOORS / AREA</b> | 24th Floor - 7,980 RSF |  |
|                      | 23rd Floor - 7,955 RSF |  |
|                      | 22nd Floor - 7,979 RSF |  |
|                      | 19th Floor - 8,009 RSF |  |

**POSSESSION** Arranged

**ASKING RENT** Upon Request

**SUBLEASE TERM** December 30, 2021

**COMMENTS**

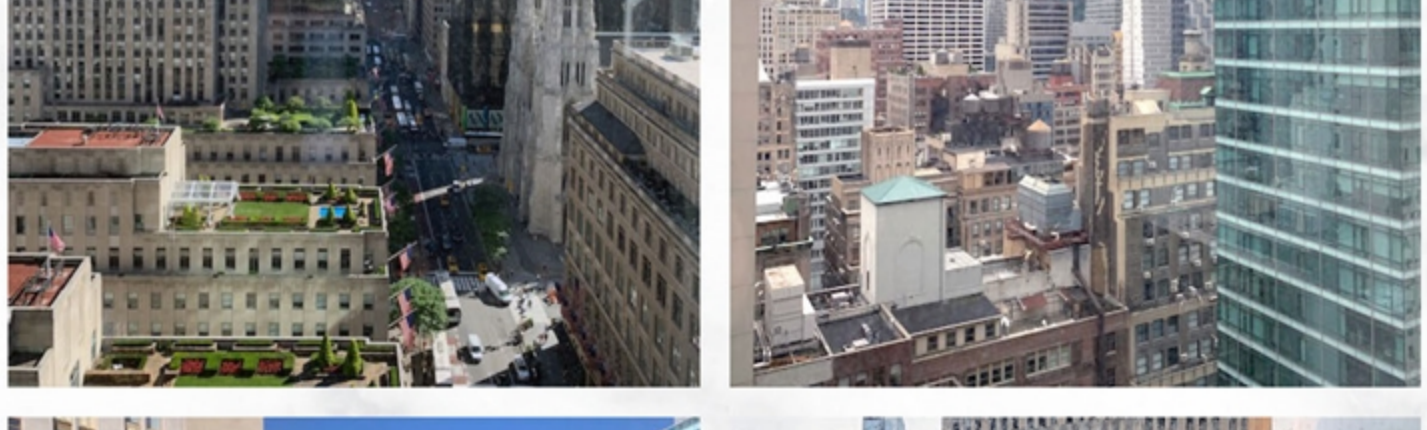
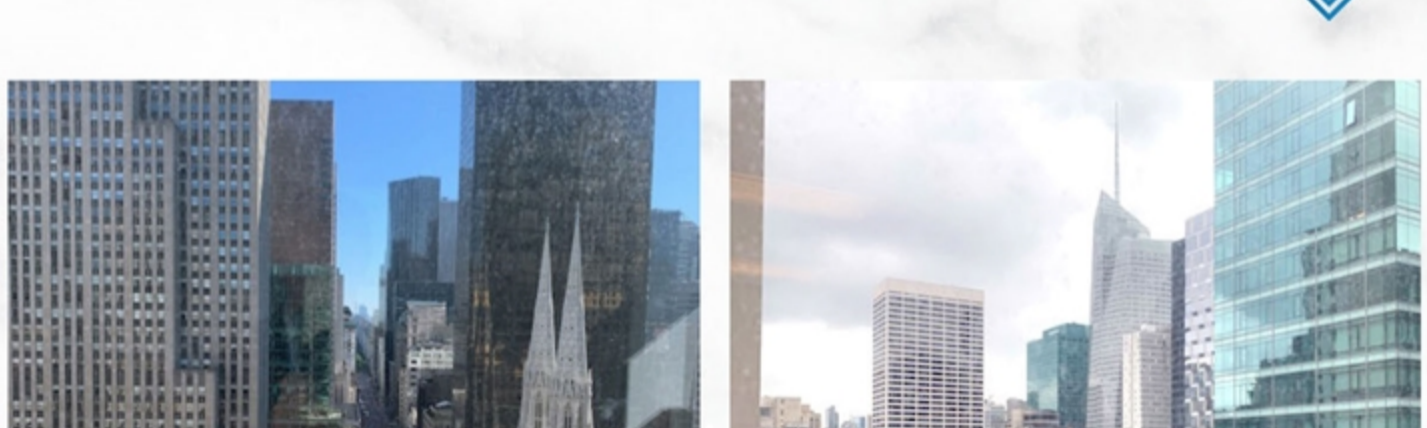
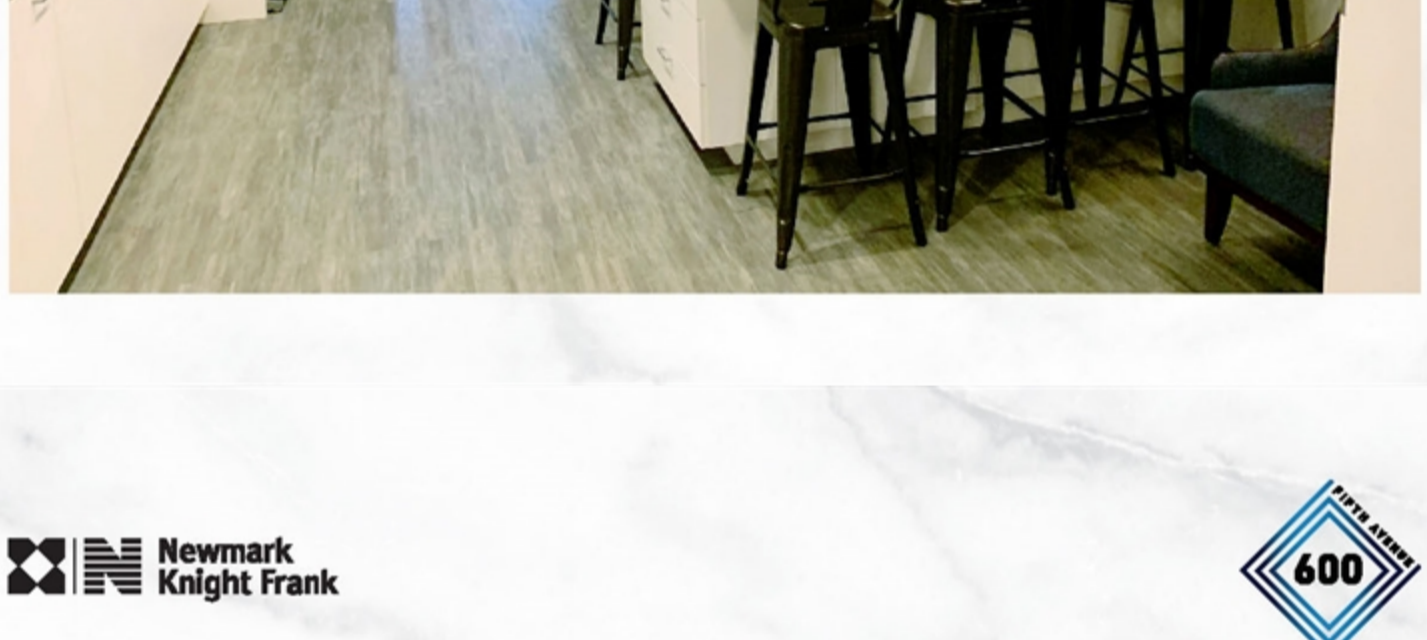
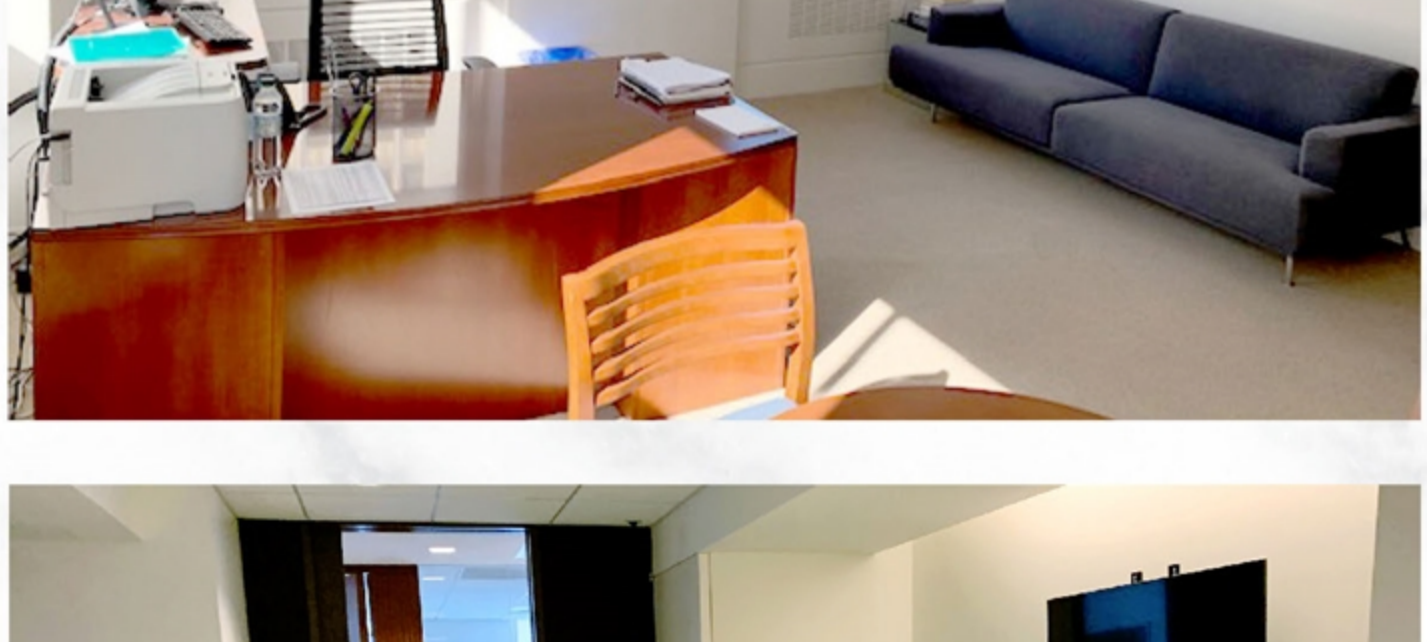
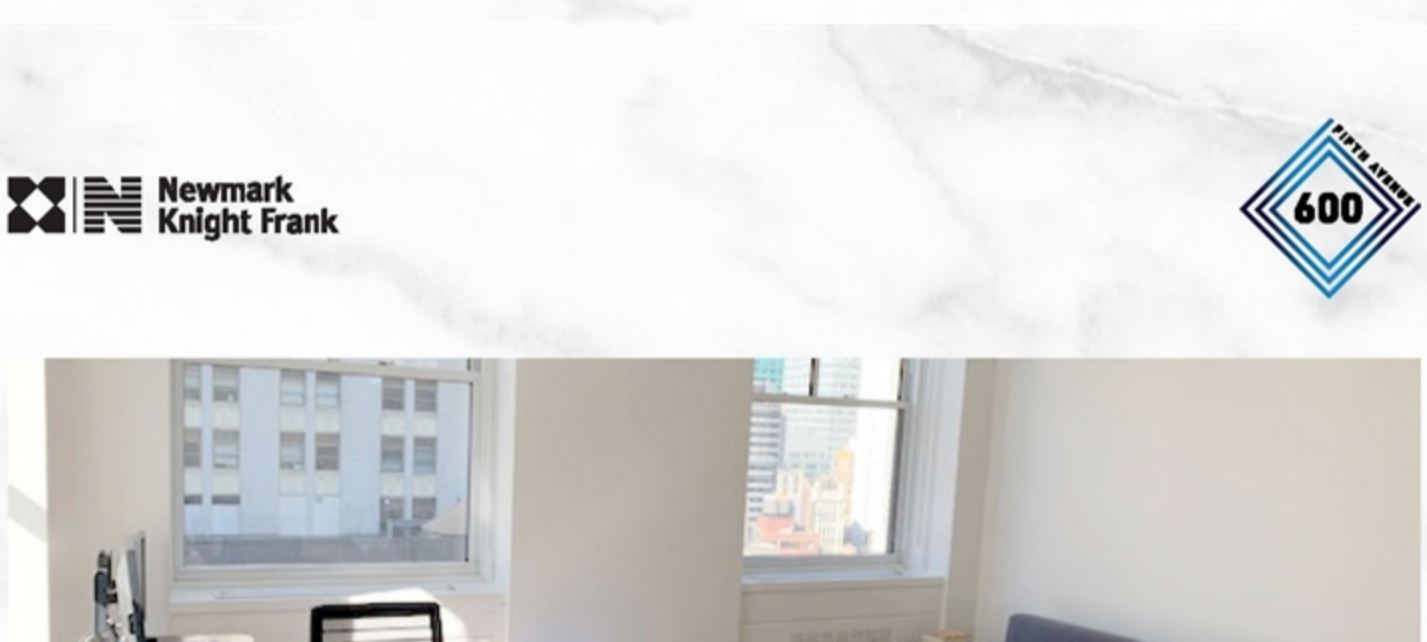
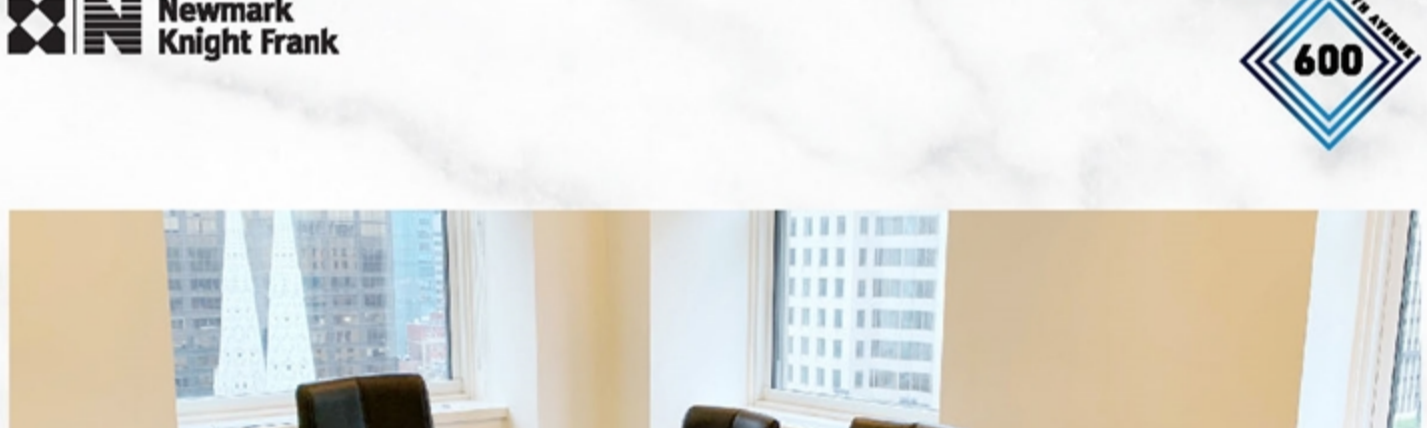
- » Private, full floors in Rockefeller Center Building, high-end installation
- » Fully furnished and wired
- » Each floor has a pantry
- » Landlord will consider a direct extension

|                              |                              |
|------------------------------|------------------------------|
| <b>24TH FLOOR</b>            | <b>23RD FLOOR</b>            |
| 20 Offices                   | 19 Offices                   |
| 1 Conference Room (8 people) | 1 Conference Room (8 people) |
| 6 Workstations               | 2 Breakout Rooms (3 people)  |
|                              | 14 Workstations              |

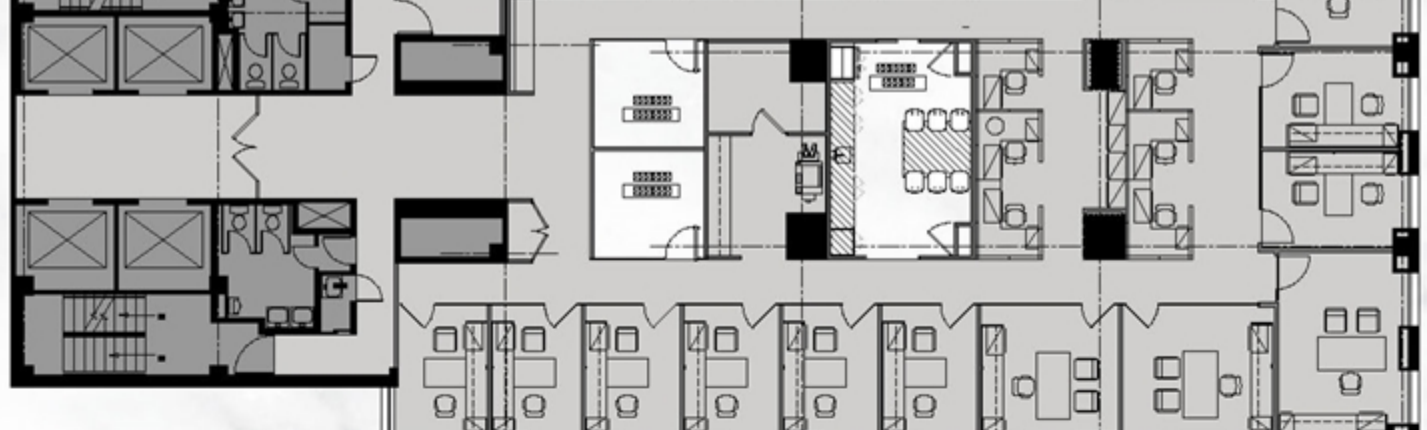
|                                |                               |
|--------------------------------|-------------------------------|
| <b>22ND FLOOR</b>              | <b>19TH FLOOR</b>             |
| 14 Offices                     | 17 Offices                    |
| 2 Conference Rooms (12 people) | 2 Conference Rooms (8 people) |
| 1 Conference Room (8 people)   | 18 Workstations               |
| 1 Workstations                 |                               |
| 1 Conference Room (4 Seats)    |                               |



**STACKING PLAN**



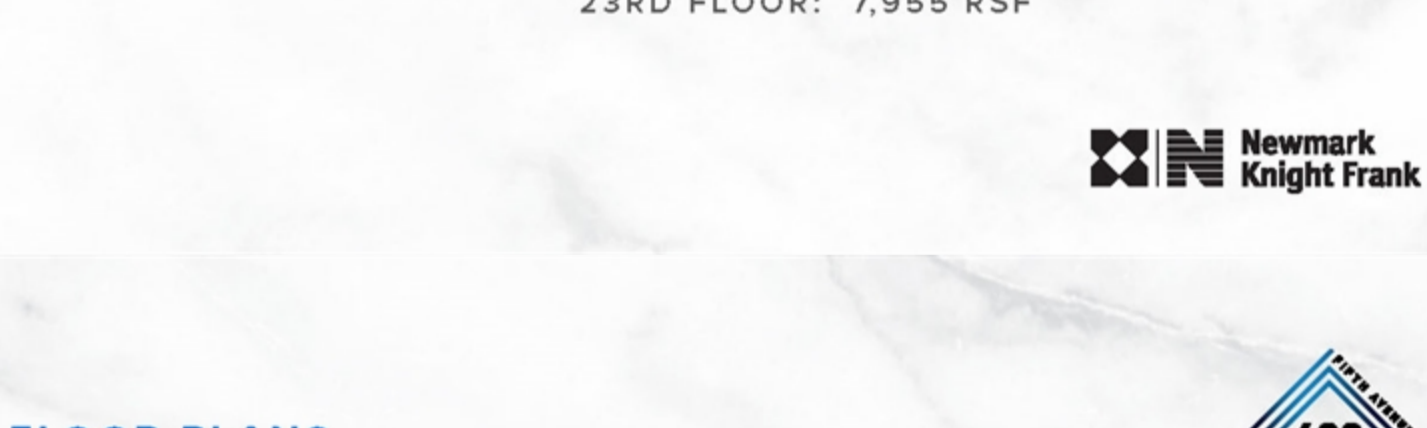
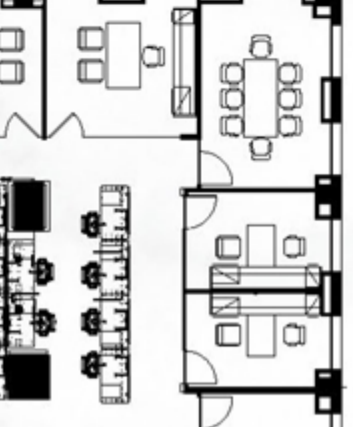
**FLOOR PLANS**



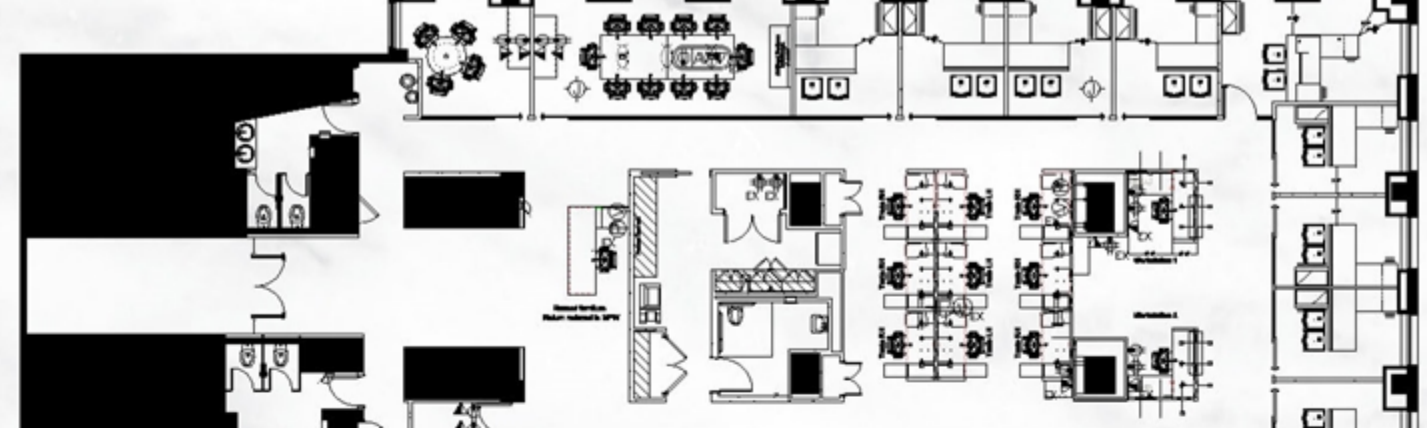
24TH FLOOR: 7,980 RSF



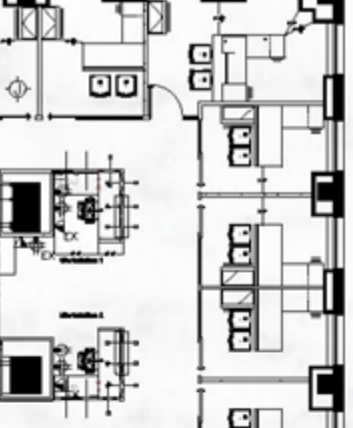
23RD FLOOR: 7,955 RSF



22ND FLOOR: 7,979 RSF



19TH FLOOR: 8,009 RSF



For more info, please contact:

**BRAD NEEDLEMAN**  
212.372.2256  
brad.needleman@ngkf.com

**HARRY SINGER**  
212.372.2008  
harry.singer@ngkf.com

**EMMA KISTLER**  
212.372.2403  
emma.kistler@ngkf.com

The information contained herein has been obtained from sources deemed reliable but has not been verified and no guarantee, warranty or representation, either express or implied, is made with respect to such information. Terms of sale or lease and availability are subject to change or withdrawal without notice.

[DOWNLOAD BROCHURE](#)