



# Mather Office Campus

10395 Peter A. McCuen  
Boulevard Mather, CA

Offered by

**Bruce Wirt, SIOR**

Senior Vice President

916.751.3610 | [bwirt@kiddermathews.com](mailto:bwirt@kiddermathews.com)



**JACKSON**  
PROPERTIES, INC.

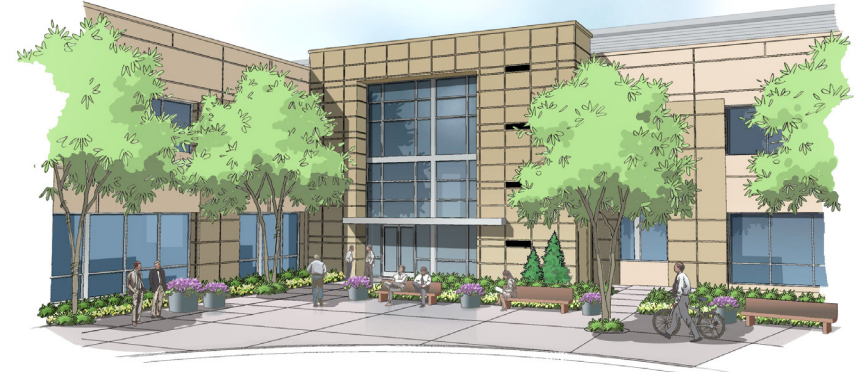
[kiddermathews.com](http://kiddermathews.com)

## Project Highlights

- ±110,000 SF of initial building area (building B)
- Mather Office Campus will achieve LEE Silver certification
- Large functional floor plates enhance interior design
- Extensive glass promotes natural day-lighting solutions
- Energy & environmentally green technologies and systems
- Accentuated formal building entrance plazas
- Dramatic 2-story central lobby areas
- Public outdoor seating areas & pedestrian walkways
- Enhanced parking ratio

## Project Amenities

- Alternative transit options (bike, van pool, ridesharing, & RT bus/light rail nearby)
- Adjacent to the new Mather Sports Complex
- LAMBRA employer tax credits and incentives
- Public transportation alternatives (RT bus/light rail nearby)
- Convenient access to Highway 50 via Mather Field Drive
- SMUD electrical service is provided by way of two substations
- Sacramento County general aviation terminal at Mather Airport (0.5 miles)
- Close proximity to a growing supply of affordable housing, restaurants, and shopping



The exterior design incorporates well articulated reveal patterns and varied color applications to provide a pleasant rhythm and pattern throughout.

The main entrance to the building is accentuated by a well defined glass envelope framed by contrasting wall masses further articulated by a pattern created by subtle reveals reminiscent of large scale stone blocks.

Other features within the building include a dramatic two story central lobby with a monument stair, employee shower and locker facilities to promote alternative means of transit to the building and to further emphasize the unique opportunities afforded to the people who work here.

The extensive use of glass at the exterior also promotes an ultimate interior space design where natural day-lighting solutions can enhance the worker experience within the building.

## The New Mather Sports Center - Adjacent to Mather Office Park

29-acre facility open from 6:00 AM to 10:00 PF Monday-Friday

Amenities include:

Soccer fields for league play

Gymnasium with lockers, showers, weight room, and aerobics classes

0.8 mile walking/jogging trail

Three lighted softball fields

Racquetball courts

Seven tennis courts - four lighted

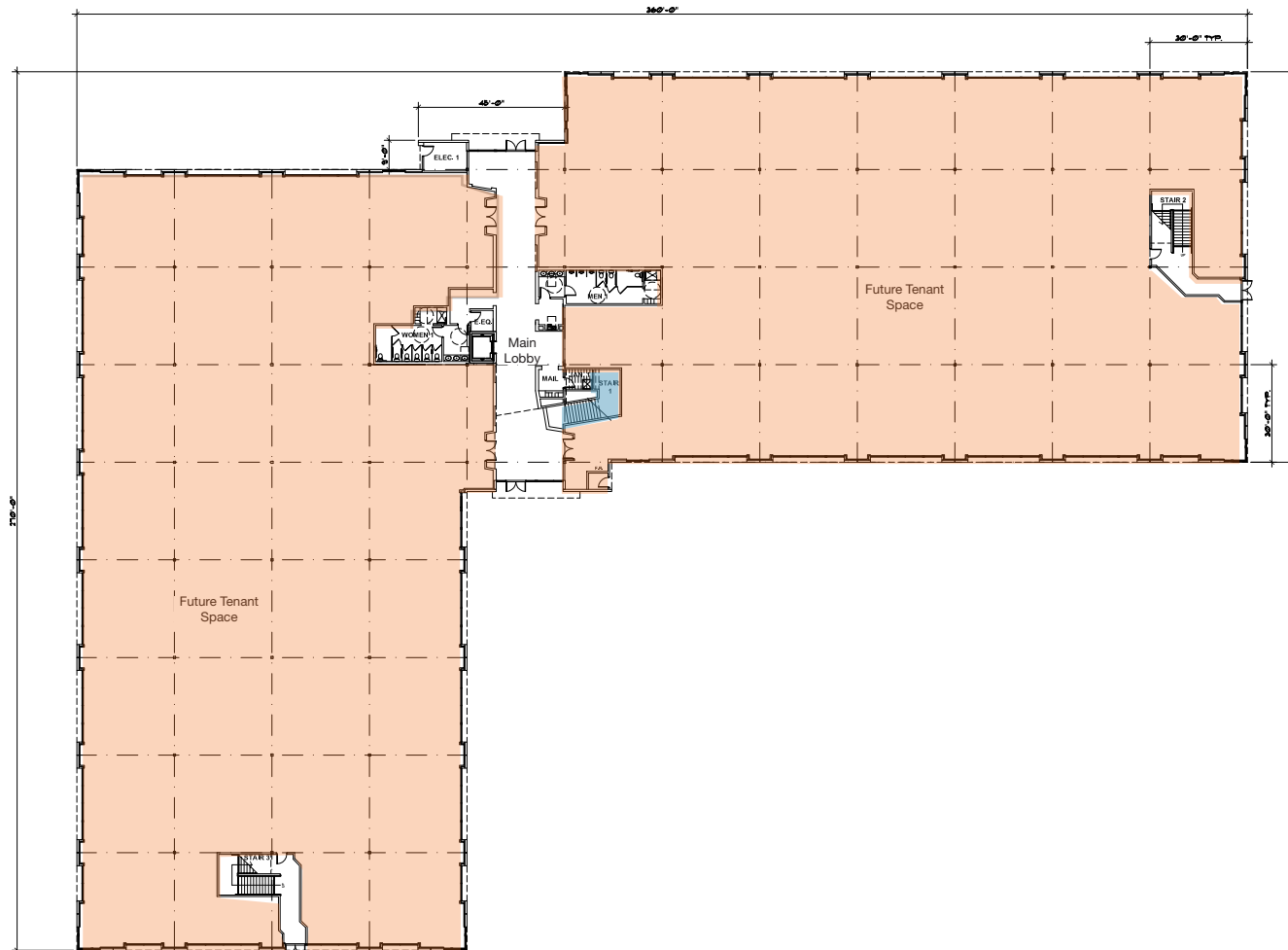
Multi-purpose area, lighted horseshoes, paddle ball and basketball courts





## Floor Plans - Building B

### FIRST FLOOR





## Floor Plans - Building B

### SECOND FLOOR

