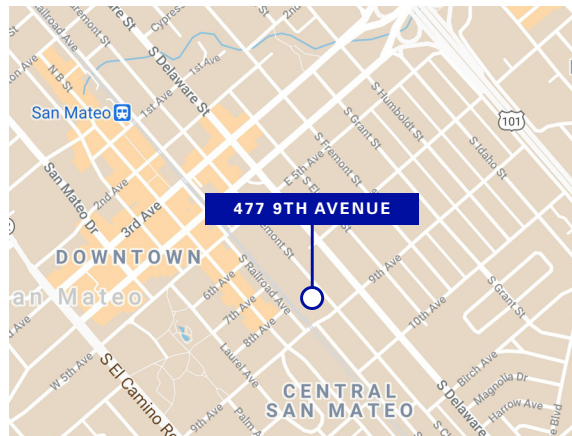




# Twin Oaks Office Space for Lease

**477 9TH AVENUE  
SAN MATEO, CA**



## Office Suites for Lease

±1,512 & ±2,001 Square Foot Suites Available

## Property Highlights

- Operable windows
- Abundant parking
- Walking distance to San Mateo Caltrain Station
- Downtown San Mateo amenities

*For information, please contact:*

### Graham Woodall

Senior Managing Director

t 650-358-5274

gwoodall@ngkf.com

CA RE License #01396445

### Josh Rowell

Executive Vice President

t 650-358-5261

jrowell@ngkf.com

CA RE License #01236434

[nrmk.com](http://nrmk.com)

**NEWMARK**

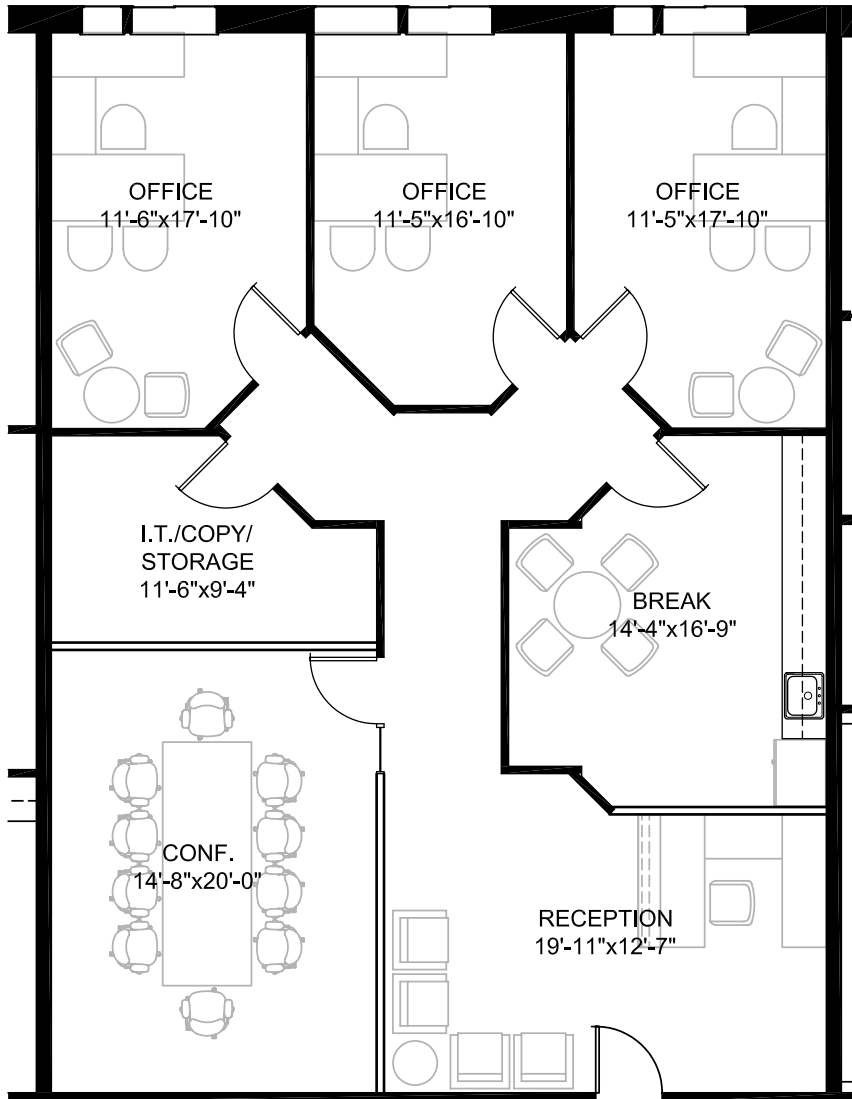
The distributor of this communication is performing acts for which a real estate license is required. The information contained herein has been obtained from sources deemed reliable but has not been verified and no guarantee, warranty or representation, either express or implied, is made with respect to such information. Terms of sale or lease and availability are subject to change or withdrawal without notice. 07-1197 • 10/20

---

477 9TH AVENUE SAN MATEO, CA

---

Suite 103: ±2,001 Square Feet



---

*For information, please contact:*

**Graham Woodall**

*Senior Managing Director*

t 650-358-5274

[gwoodall@ngkf.com](mailto:gwoodall@ngkf.com)

CA RE License #01396445

**Josh Rowell**

*Executive Vice President*

t 650-358-5261

[jrowell@ngkf.com](mailto:jrowell@ngkf.com)

CA RE License #01236434

[nrmk.com](http://nrmk.com)

**NEWMARK**

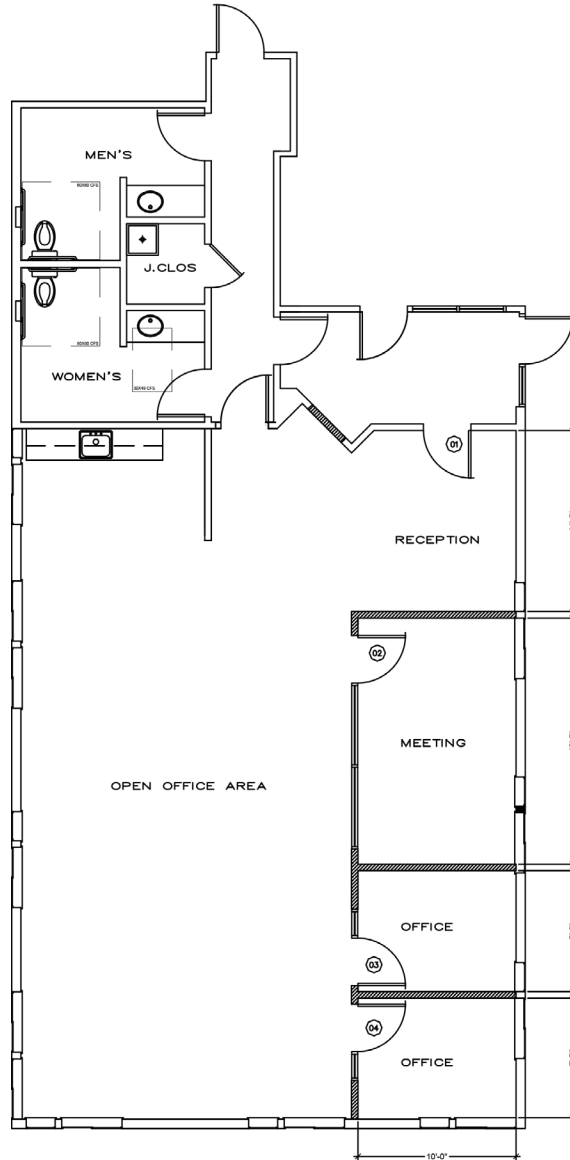
The distributor of this communication is performing acts for which a real estate license is required. The information contained herein has been obtained from sources deemed reliable but has not been verified and no guarantee, warranty or representation, either express or implied, is made with respect to such information. Terms of sale or lease and availability are subject to change or withdrawal without notice. 07-1197 • 10/20

---

477 9TH AVENUE SAN MATEO, CA

---

Suite 112: ±1,512 Square Feet



---

*For information, please contact:*

**Graham Woodall**

*Senior Managing Director*

t 650-358-5274

[gwoodall@ngkf.com](mailto:gwoodall@ngkf.com)

CA RE License #01396445

**Josh Rowell**

*Executive Vice President*

t 650-358-5261

[jrowell@ngkf.com](mailto:jrowell@ngkf.com)

CA RE License #01236434

[nrmk.com](http://nrmk.com)

**NEWMARK**

The distributor of this communication is performing acts for which a real estate license is required. The information contained herein has been obtained from sources deemed reliable but has not been verified and no guarantee, warranty or representation, either express or implied, is made with respect to such information. Terms of sale or lease and availability are subject to change or withdrawal without notice. 07-1197 • 10/20