

# DEVELOPMENT SITE ON HIGHWAY 30A

SANTA ROSA BEACH, FLORIDA

## DEVELOPMENT SITE

Prime Hwy 30A Corner Parcel  
Santa Rosa Beach, FL 32459

### SITE SIZE

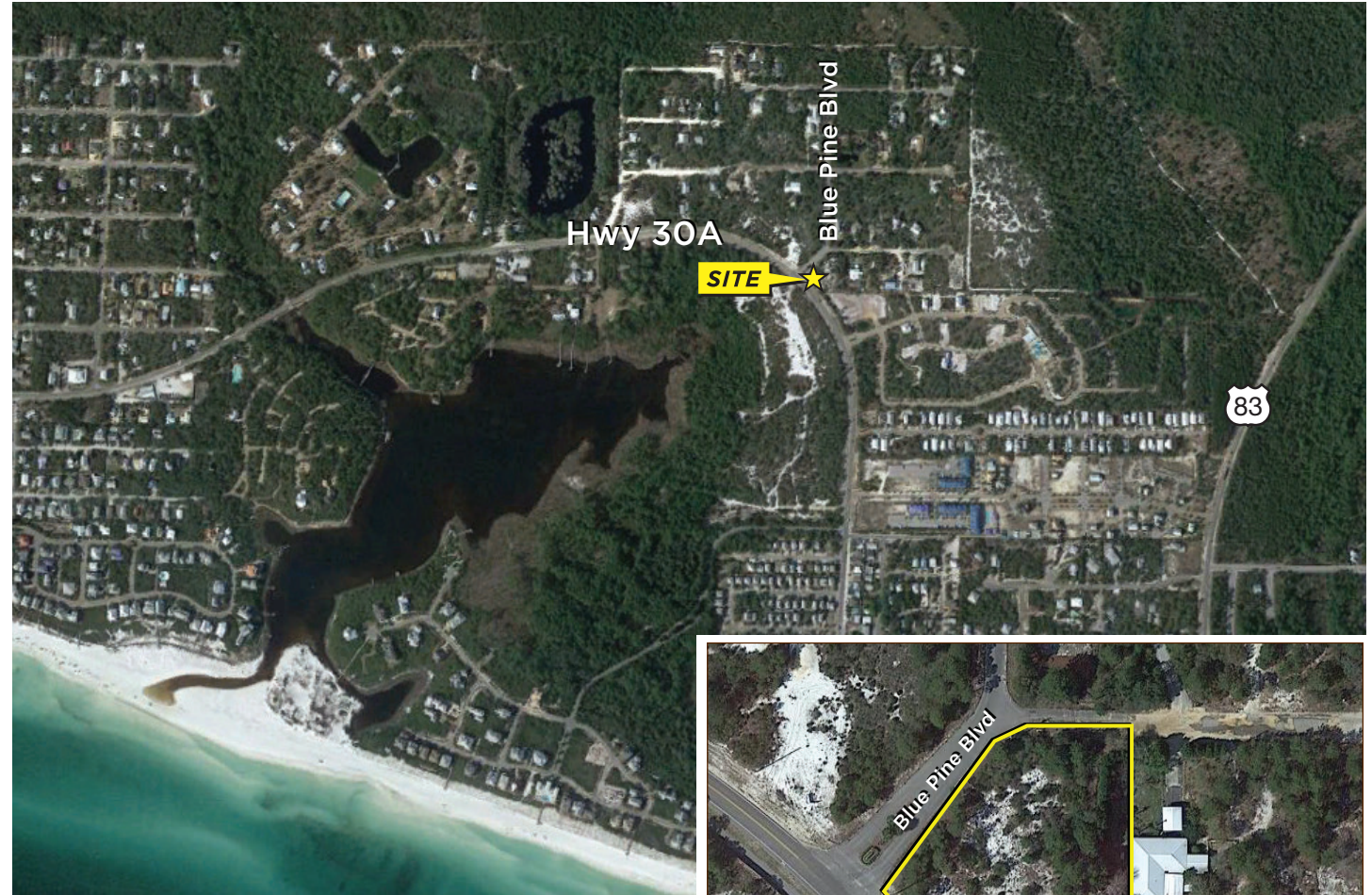
+/- 0.82 Acres

### COMMENTS

- Lot offers 396' frontage on Hwy 30A
- Lot sits very high - over 40' above sea level
- No wetlands on property
- Zoning: Village Mixed Use
- Intersection of Hwy 30A and Blue Pine Boulevard
- Suitable for a variety of uses such as restaurant, residential, or mixed use
- **PRICED BELOW APPRAISED VALUE**

### EXCLUSIVE AGENT

Jason Carnes  
jasonc@grahamcompany.com  
850.830.6593



**PRICING**  
**\$699,000**



100 Richard Jackson Blvd  
Suite 115  
Panama City Beach, FL 32407

TEL 850.563.1500  
FAX 850.563.1504  
grahamcompany.com

Information deemed reliable, but not guaranteed.

1/8/18 CD

 **DEVELOPMENT SITE ON HIGHWAY 30A**  
SANTA ROSA BEACH, FLORIDA

**DEVELOPMENT SITE**

Prime Hwy 30A Corner Parcel  
Santa Rosa Beach, FL 32459

- Previously approved DO allows for +/- 12,000 SF
- Site next door to Class A office building to be completed 1st Quarter 2018



**PRICING**  
**\$699,000**

**EXCLUSIVE AGENT**

Jason Carnes  
jasonc@grahamcompany.com  
850.830.6593



100 Richard Jackson Blvd  
Suite 115  
Panama City Beach, FL 32407

TEL 850.563.1500  
FAX 850.563.1504  
grahamcompany.com

Information deemed reliable, but not guaranteed.

1/8/18 CD