

587 FIFTH



5TH FLOOR

▶ TAKE A VIRTUAL TOUR

3RD FLOOR

▶ TAKE A VIRTUAL TOUR

NEWMARK



TEST-FIT



FLOOR / AREA	TERM	RENT	AVAILABILITY
Entire 3rd Floor: 4,425 RSF	1 - 3 years	\$49.00	Immediate
Entire 5th Floor: 4,425 RSF	5 - 10 years	\$54.00	Immediate

COMMENTS

- Newly renovated lobby and passenger elevators
- Column free floor plate; maximum efficiency
- Built floors; move-in condition ready for occupancy
- Low density building; full floor tenants
- Walking distance to Grand Central and Penn Station

NICK BERGER
212-372-2411
nick.berger@nmrk.com

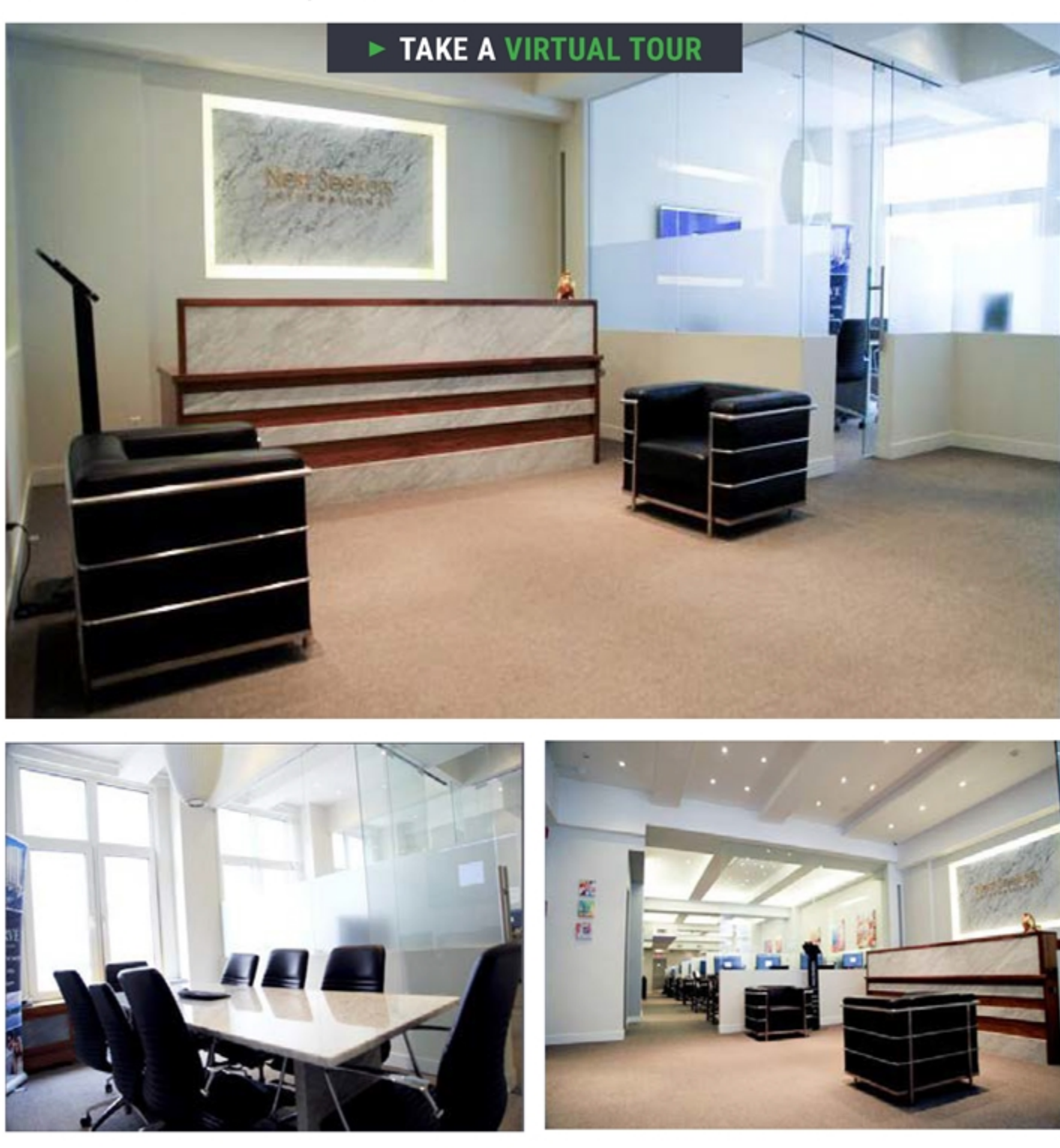
GREGORY DIGIOIA
212-372-2330
gregory.digioia@nmrk.com

NEWMARK

3RD FLOOR PHOTOS | BRAND NEW INSTALLATION



5TH FLOOR PHOTOS | MOVE-IN CONDITION



NICK BERGER
212-372-2411
nick.berger@nmrk.com

GREGORY DIGIOIA
212-372-2330
gregory.digioia@nmrk.com

NEWMARK

[DOWNLOAD BROCHURE](#)