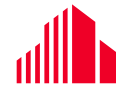


FOR SALE

US Highway 31

Seymour, IN 47247



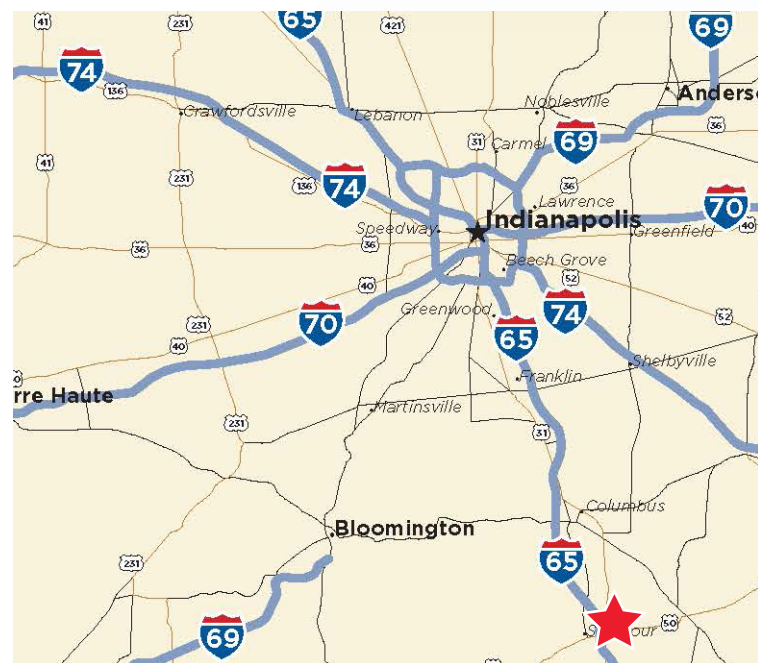
CUSHMAN &
WAKEFIELD



±61 ACRES

Property Highlights

- ±61 Acres
- Zoned RSF/Suburban
- Asking \$30,000/acre.



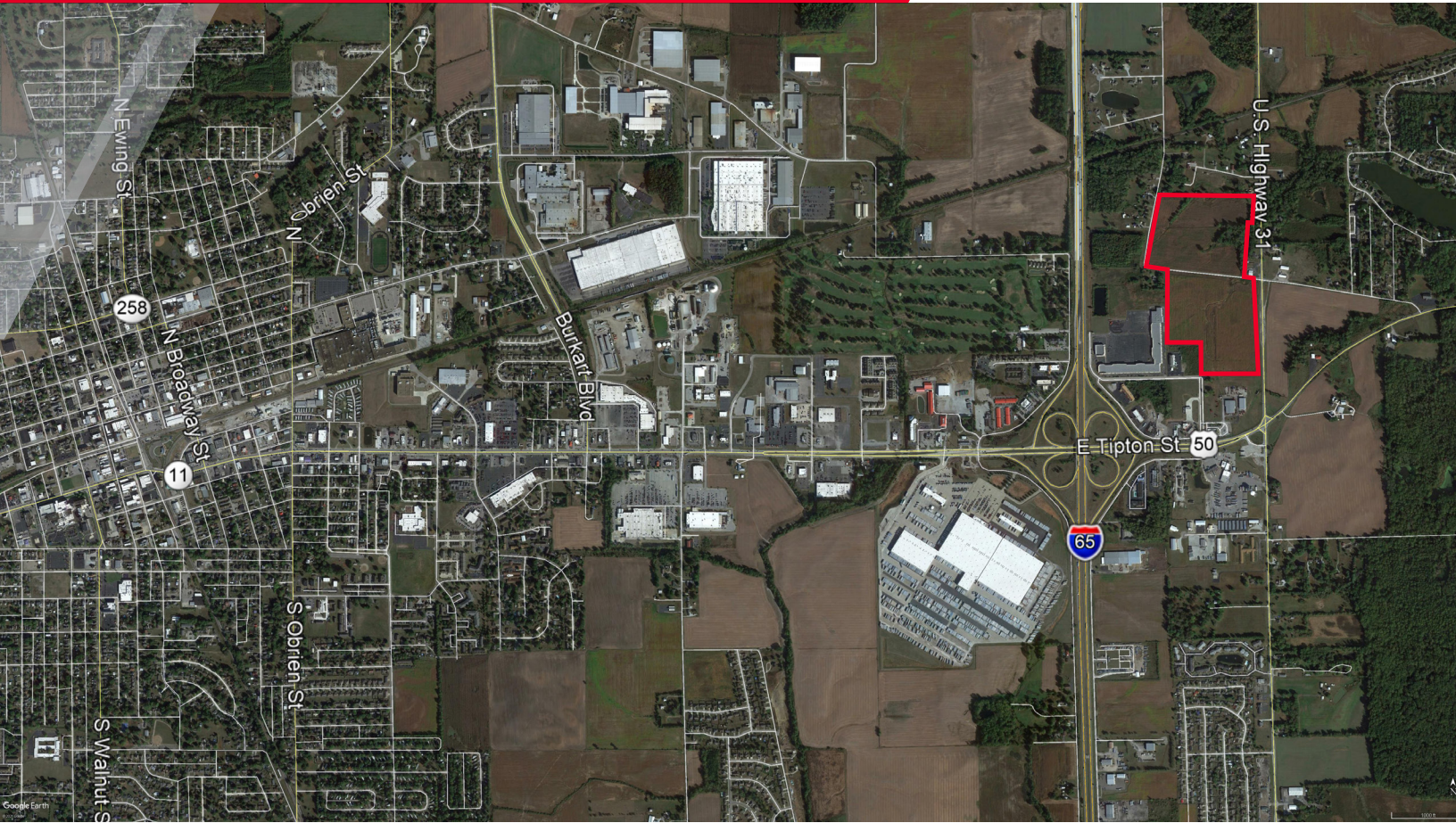
Contact

BO LEFFEL
Senior Director
+1 317 639 0441
@cushwake.com

One American Square, Suite 1800
Indianapolis, IN 46282
Main +1 317 639 0515
Fax +1 317 639 0504

FOR SALE

US Highway 31 Seymour, IN 47247



Demographics

	1 Mile	3 Miles	5 Miles	10 Miles
Population	1,214	15,239	26,862	39,832
Average Household Income	\$84,031	\$60,448	\$67,235	\$68,519
Daytime Population (Age 16+)	1,114	14,728	27,367	32,867

2020 estimates. Source: Applied Geographic Solutions 11/2020, TIGER Geography

Contact

BO LEFFEL
Senior Director
+1 317 639 0441
@cushwake.com

One American Square, Suite 1800
Indianapolis, IN 46282
Main +1 317 639 0515
Fax +1 317 639 0504