

FOR LEASE - ATM OPPORTUNITY

316 Mission Avenue
Oceanside, California



FEATURES

- High Visibility ATM Location
- Close to several local shops and adjacent to Regal Cinemas
- Located along Mission Ave with 31,500 cars per day
- Nearest cross street is historic Hwy 101 with 18,700 cars per day
- Close proximity to several hotels, retailers, restaurants and the beach
- Minutes away from Amtrak station & coaster
- Heavy daytime and costal pedestrian traffic

RI RETAIL INSITE

Matt Moser

Lic.#01772051
858.523.2096

mmoser@retailinsite.net

Brian G. Pyke

Lic.#01506790
858.324.6103

bpyke@retailinsite.net

MEMBERS OF
CHAINLINKS
RETAIL ADVISORS

12264 EL CAMINO REAL STE. 202 SAN DIEGO, CA 92130 | LIC # 01206760 | T: 858 523 2090 | RETAILINSITE.NET

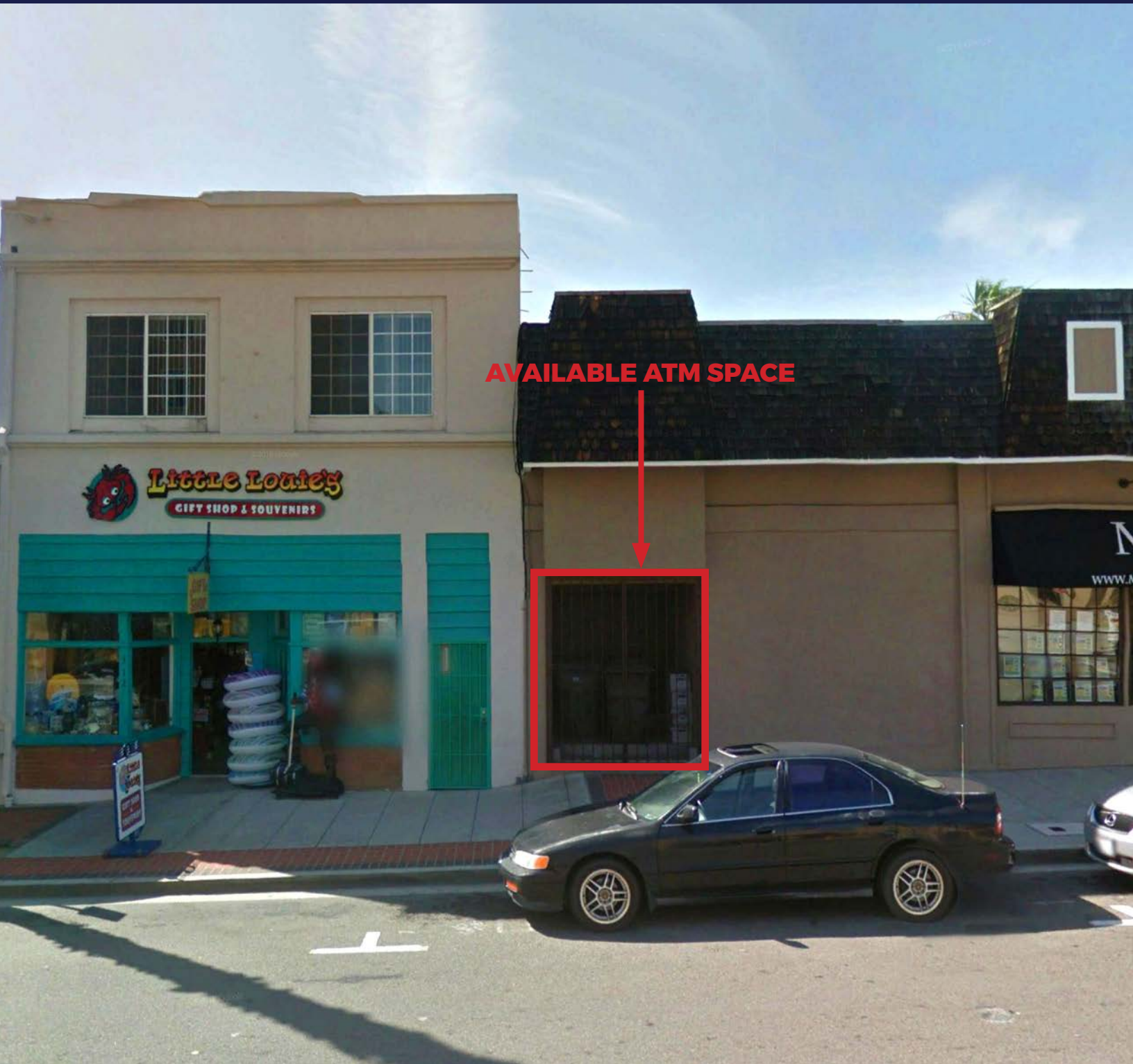
The information above has been obtained from sources believed to be reliable. While we do not doubt its accuracy, we have not verified it and make no guarantee, warranty or representation about it. It is your responsibility to independently confirm its accuracy and completeness. Any projections, opinions, assumptions or estimates used are for example only and do not represent the current or future performance of the property. The value of this transaction to you depends on tax and other factors which should be evaluated by your tax, financial and legal advisors. You and your advisors should conduct a careful, independent investigation of the property to determine to your satisfaction the suitability of the property for your needs.

316 Mission Avenue
Oceanside, California



FOR LEASE - ATM OPPORTUNITY

316 Mission Avenue
Oceanside, California



RETAIL INSITE

MEMBERS OF
CHAINLINKS
RETAIL ADVISORS

12264 EL CAMINO REAL STE. 202 SAN DIEGO, CA 92130 | LIC # 01206760 | T: 858 523 2090 | RETAILINSITE.NET

The information above has been obtained from sources believed to be reliable. While we do not doubt its accuracy, we have not verified it and make no guarantee, warranty or representation about it. It is your responsibility to independently confirm its accuracy and completeness. Any projections, opinions, assumptions or estimates used are for example only and do not represent the current or future performance of the property. The value of this transaction to you depends on tax and other factors which should be evaluated by your tax, financial and legal advisors. You and your advisors should conduct a careful, independent investigation of the property to determine to your satisfaction the suitability of the property for your needs.

Matt Moser

Lic.#01772051
858.523.2096

mmoser@retailinsite.net

Brian G. Pyke

Lic.#01506790
858.324.6103

bpyke@retailinsite.net

EXPANDED DEMOGRAPHIC PROFILE

Estimated 2016 • Calculated Using Proportional Block Groups

316 Mission Ave. | Oceanside, CA



POPULATION

	1 MILE	3 MILES	5 MILES
Estimated Population	16,426	56,937	129,486
Forecasted Population (2021)	16,550	58,614	136,431



HOUSEHOLDS

Households	6,070	20,984	49,146
------------	-------	--------	--------



AVG HHD INCOME

Estimated Avg Household Income	\$75,308	\$86,083	\$90,567
Avg Family Income	\$69,661	\$83,452	\$90,320



MEDIAN HH INCOME

Estimated Median Household Income	\$50,086	\$63,502	\$69,623
Median Family Income	\$48,951	\$65,613	\$75,074

\$\$\$ PER CAPITA INCOME

Est. Proj. Per Capita Income	\$28,480	\$32,806	\$35,219
------------------------------	----------	----------	----------

\$\$ OTHER INCOME

Est. Proj. Median Disposable Income	\$42,153	\$51,882	\$56,198
-------------------------------------	----------	----------	----------



DAYTIME DEMOS

Total Number of Businesses	728	2,575	4,879
Total Number of Employees	5,473	21,074	41,492



RACE & ETHNICITY

	1 MILE	3 MILES	5 MILES
White	9,201 60.5%	36,057 67.7%	85,552 70.3%
Black or African American	560 3.7%	2,050 3.8%	4,713 3.9%
American Indian & Alaskan Native	207 1.4%	579 1.1%	1,116 0.9%
Asian	433 2.8%	2,173 4.1%	6,536 5.4%
Hawaiian & Pacific Islander	101 0.7%	495 0.9%	1,122 0.9%
Other Race	4,061 26.7%	9,460 17.8%	16,338 13.4%
Two or More Races	645 4.2%	2,474 4.6%	6,299 5.2%



AGE DISTRIBUTION

Median Age	35.7	34.8	35.0
------------	------	------	------



HOUSING

Total Housing Units	7,357	22,920	51,853
---------------------	-------	--------	--------