

Cape May County | New Jersey

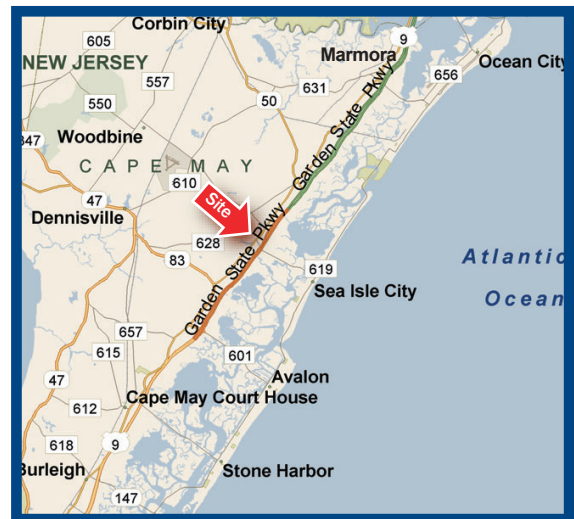
OCEAN VIEW PLAZA

Route 9 & School House Lane | Dennis Township



PROPERTY HIGHLIGHTS

- 12 acres of planned mixed-use retail, office, medical and 36 residential townhomes
- Located at the signalized intersection of Route 9 and Sea Isle City/School House Lane
- Proposed 13,035 sf retail strip center with two proposed endcap spaces - One endcap space with drive thru service, 3,000 SF freestanding bank pad located at the front corner of the property
- Close proximity to Sea Isle City, Avalon, Ocean City, and Stone Harbor
- Year-round trade area with seasonal population estimated to be 614,261 people.
- ½ mile from the Garden State Parkway. High volume Wawa gas/convenience and liquor Store at opposite corners; Adjacent to Shore Gate Golf Course
- Ideal users include retail, restaurants, bank/credit union, medical, wireless store, discount merchandise, nail & hair salons and professional office users



DEMOGRAPHICS (*)

	3 Miles	5 Miles	7 Miles
Population	6,972	14,431	26,282
Average HH Income	\$87,487	\$89,443	\$87,330
Total Businesses	440	811	1,479
Number of Employees	2,638	7,033	12,939

* Data Source: ESRI™

CONTACT:

Maria Rita Aristone
maristone@lpre.com
856-231-1010 Ext. 202

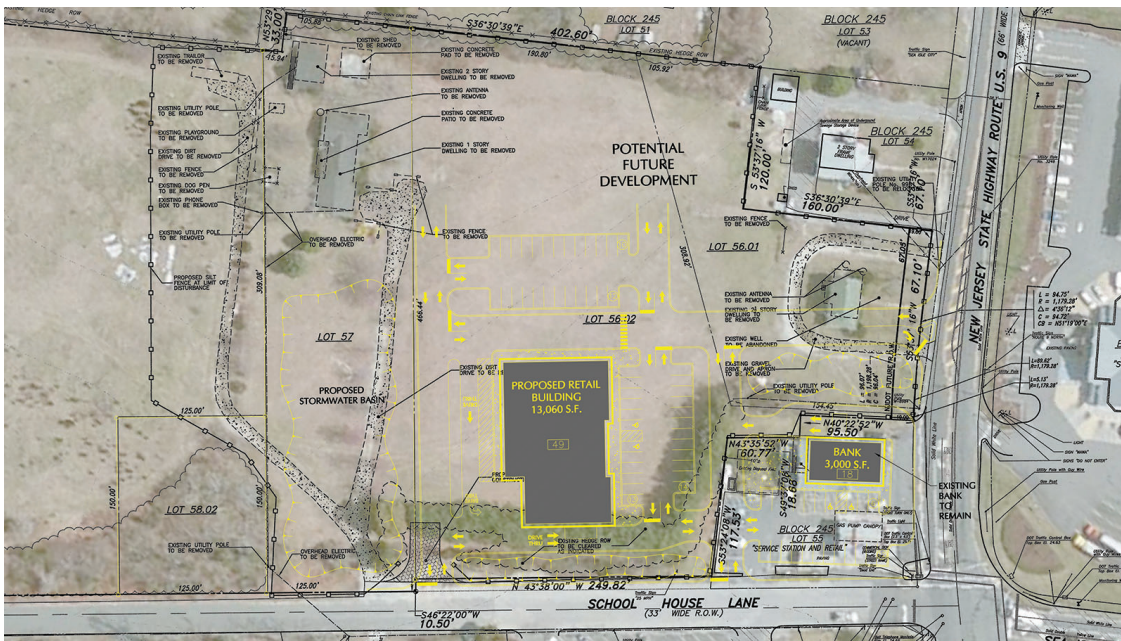
Steven J. DePetris, CCIM
sdepetris@lpre.com
856-231-1010 Ext. 203



Cape May County | New Jersey

OCEAN VIEW PLAZA

Route 9 & School House Lane | Dennis Township



CONTACT:

Maria Rita Aristone
maristone@lpre.com
856-231-1010 Ext. 202

Steven J. DePetris, CCIM
sdepetris@lpre.com
856-231-1010 Ext. 203

