

10557 Juniper Avenue Suite G-1, Fontana, CA 92337

FOR LEASE

1,375 Sq. Ft. Commercial Zone Office



Property Features:

- Corner Suite
- 5 Window Offices
- 2 Story Upscale Style
- Modern Tilt Up Design
- Restrooms on both levels
- Conference Room/Reception
- Coffee Bar and Storage Room
- 6 Parking Spaces+
- RMU Zone Regional Mixed Uses
- Zoned For Research /Development, Commercial/Services Businesses/ Professional Offices and Many Other Uses.
- \$1,675 @ Month
- + 4% fixed annual adjustment
- UTILITIES INCLUDED*
- *\$100 @ Month Allowance
- Sierra Ave. Exit FWY I-10
- Adjacent to Blocks of Major Retailers
- Ten Restaurants + Kaiser Perm Complex

For additional information, please contact:

George Robins

P.O. Box 1446 • Upland, CA 91785-1446

P 909-981-5616 • F 909-647-9588 • C 909-815-9234

GGR@GeorgeRobins.com

CA Lic.#00349843



SB_604/J-7

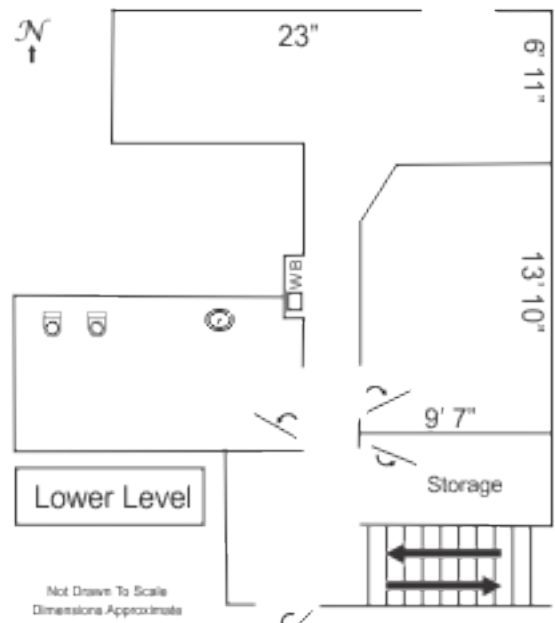
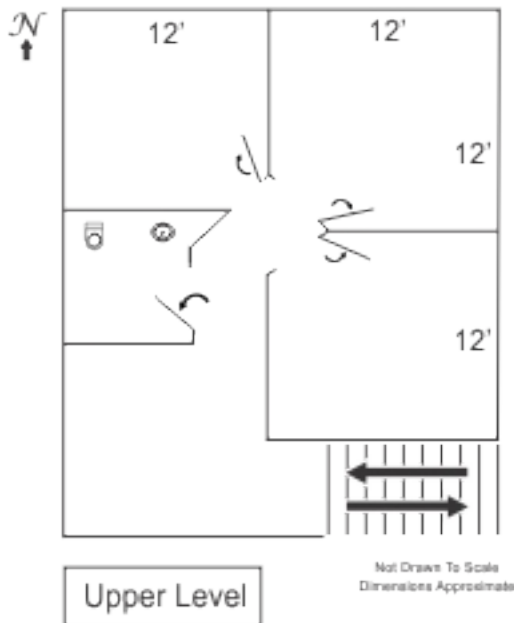
George Robins
REAL ESTATE BROKER

Although all information is furnished regarding for sale, rental or financing is from sources deemed reliable, such information has not been verified and no express representation is made nor is any to be implied to the accuracy thereof, and it is submitted subject to errors, omissions, changes of price, rental or other conditions, prior sale, lease or financing, or withdrawal without notice.

10557 Juniper Avenue Suite G-1, Fontana, CA 92337

FOR LEASE

1,375 Sq. Ft. Commercial Zone Office



For additional information, please contact:

George Robins

P.O. Box 1446 • Upland, CA 91785-1446

P 909-981-5616 • F 909-647-9588 • C 909-815-9234

GGR@GeorgeRobins.com

CA Lic.#00349843



George Robins
REAL ESTATE BROKER

Although all information is furnished regarding for sale, rental or financing is from sources deemed reliable, such information has not been verified and no express representation is made nor is any to be implied to the accuracy thereof, and it is submitted subject to errors, omissions, changes of price, rental or other conditions, prior sale, lease or financing, or withdrawal without notice.