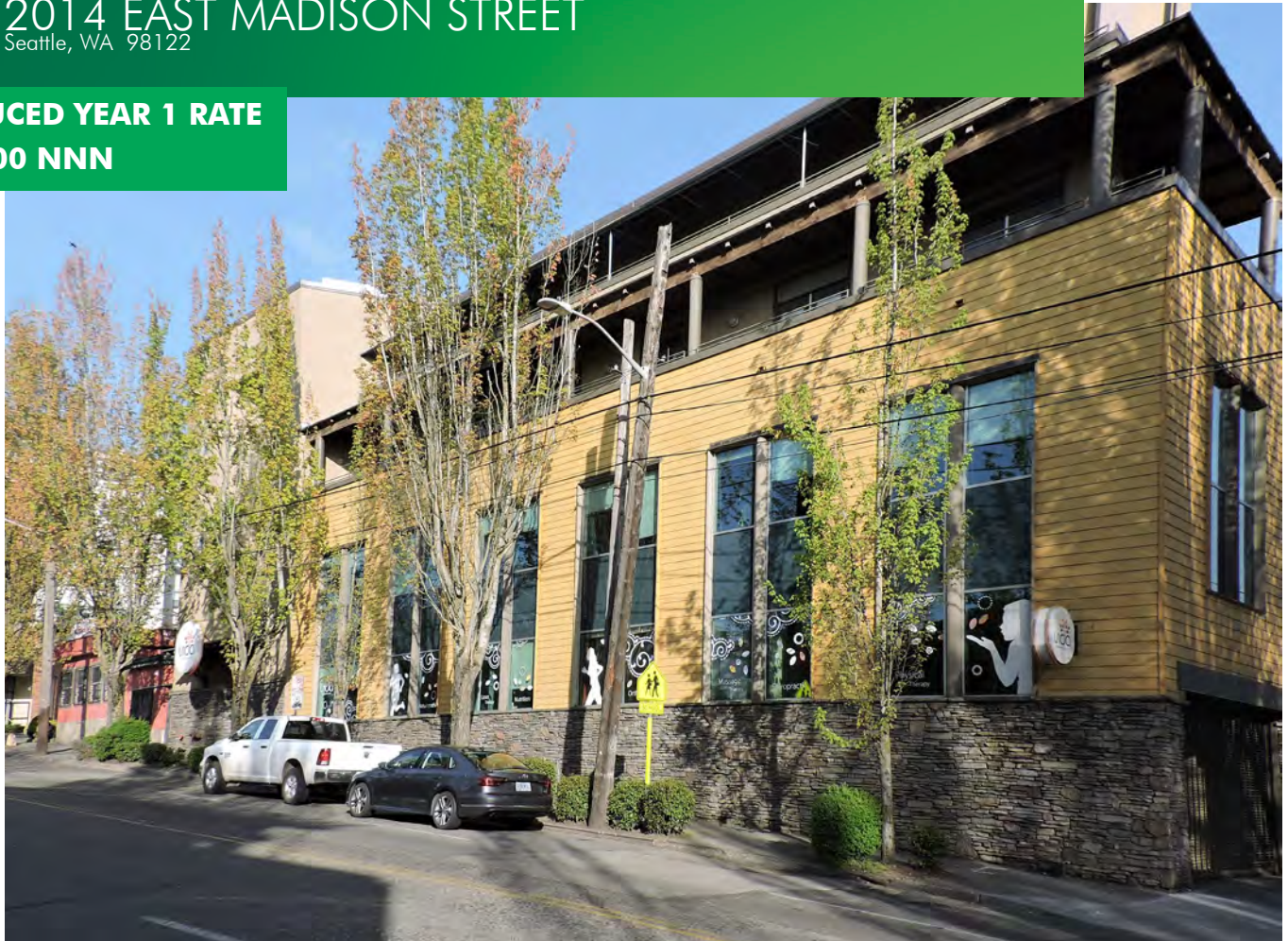


FOR LEASE - REVISED PRICE

# MADISON RIDGE OFFICE BUILDING

2014 EAST MADISON STREET  
Seattle, WA 98122

REDUCED YEAR 1 RATE  
\$15.00 NNN



## BUILDING HIGHLIGHTS

- + Located in Capitol Hill directly on Madison
- + **Enhanced HVAC technology - GPS ionization system**
- + Full floor opportunity
- + Walkability score of 92\*
- + Located on bus line
- + Parking available in building and additional street parking

\*Source: walkscore.com

[www.cbre.us/seattle](http://www.cbre.us/seattle)

**CBRE**

# FOR LEASE MADISON RIDGE OFFICE BLDG

2014  
EAST MADISON ST  
Seattle, WA 98122

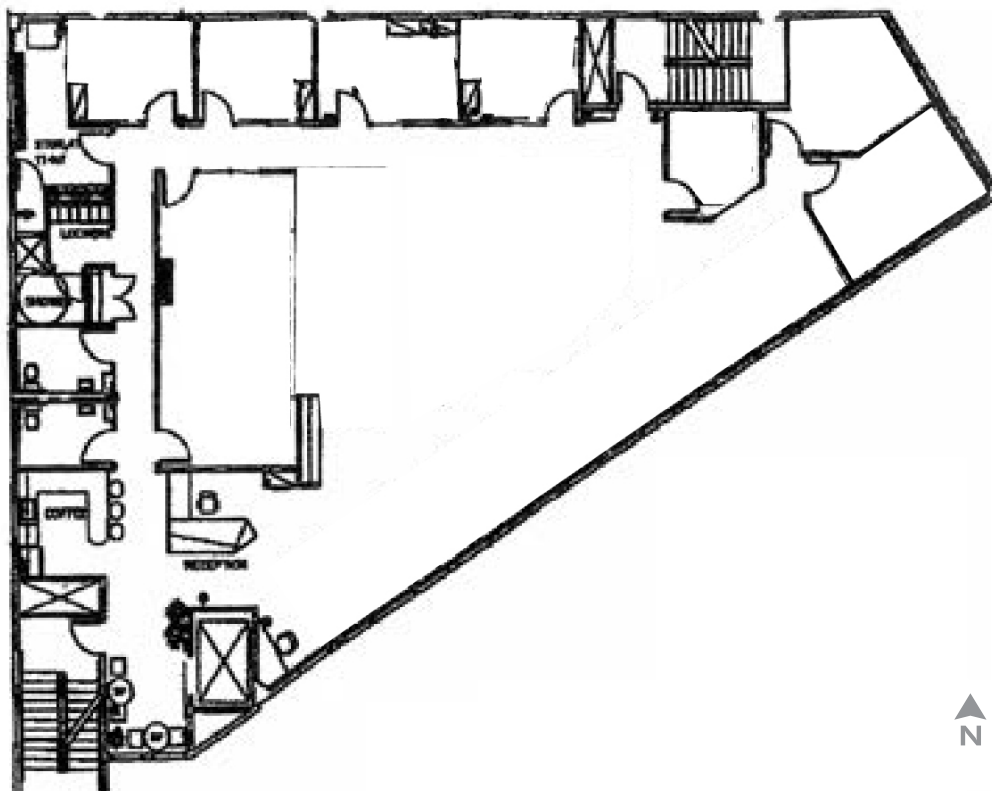


## SPACE INFORMATION

- + Floor 2 - 4,265 RSF
- + Space available now
- + Reduced year 1 rate
- + **\$15.00/NNN year 1 rate**
- + Excellent natural light
- + Good mix of open work area and offices
- + Highly efficient layout



## FLOOR PLAN





FOR LEASE  
**MADISON RIDGE OFFICE BLDG**

2014  
**EAST MADISON ST**  
Seattle, WA 98122



# FOR LEASE MADISON RIDGE OFFICE BLDG

2014  
EAST MADISON ST  
Seattle, WA 98122



## CONTACT US

**DAN STUTZ**  
+1 206 292 6097  
dan.stutz@cbre.com

**EVAN STEINRUCK**  
+1 206 292 6022  
evan.steinruck@cbre.com

**CBRE, Inc.**  
1420 5th Avenue, Suite 1700  
Seattle, WA 98101

© 2020 CBRE, Inc. All rights reserved. This information has been obtained from sources believed reliable, but has not been verified for accuracy or completeness. You should conduct a careful, independent investigation of the property and verify all information. Any reliance on this information is solely at your own risk. CBRE and the CBRE logo are service marks of CBRE, Inc. All other marks displayed on this document are the property of their respective owners. Photos herein are the property of their respective owners. Use of these images without the express written consent of the owner is prohibited. JS 08122020

[www.cbre.us/seattle](http://www.cbre.us/seattle)

**CBRE**