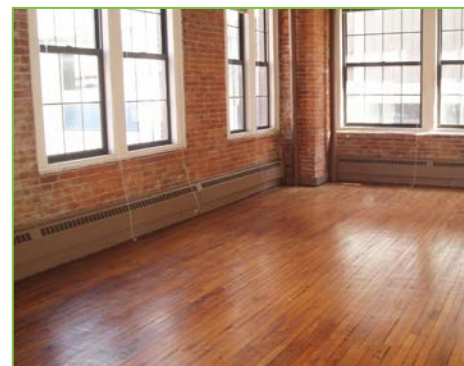
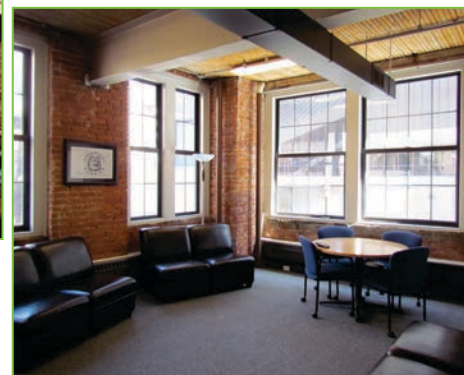


FOR LEASE

100

**ALLYN STREET**  
HARTFORD, CONNECTICUT



## OFFICE SPACE AVAILABLE UP TO 3,568 SF

100 Allyn Street is well located in Downtown Hartford on the corner of Allyn and Ann Uccello Streets, home to Agave Grill. Tenant finishes include exposed brick and wood beams, hardwood floors and modern thermopanel windows providing energy-efficient comfort with an abundance of natural light. The lobby features marble floors, soft lighting, and mahogany wood trim. 100 Allyn Street, also known as The Crosthwaite Building, is listed on the National Register of Historical Places and with its distinctive red brick facade, is one of Hartford's most attractive historical buildings.

### Building Features:

- :: Exposed brick & wood-beam construction
- :: Extra-large, double-paned (thermal) windows
- :: Parking available in lot next door
- :: Additional parking on Allyn & Ann Uccello Streets
- :: Total building size of 30,600 SF
- :: Easily accessible to and from all major highways

### FOR MORE INFORMATION PLEASE CONTACT:

**Bob Botters**

860.987.4783

[bob.botters@cbre-ne.com](mailto:bob.botters@cbre-ne.com)

**Alexis Augsberger**

860.987.4708

[alexis.augsberger@cbre-ne.com](mailto:alexis.augsberger@cbre-ne.com)

**CBRE** | New England

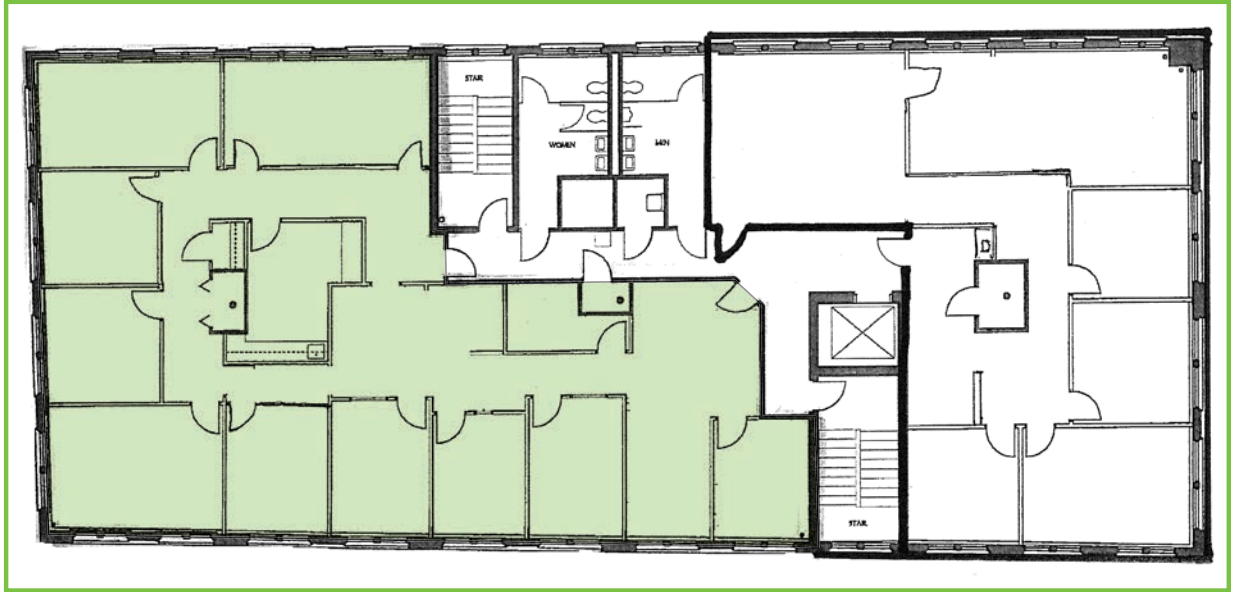
CB Richard Ellis - N.E. Partners, LP, a CBRE Joint Venture

FOR  
LEASE

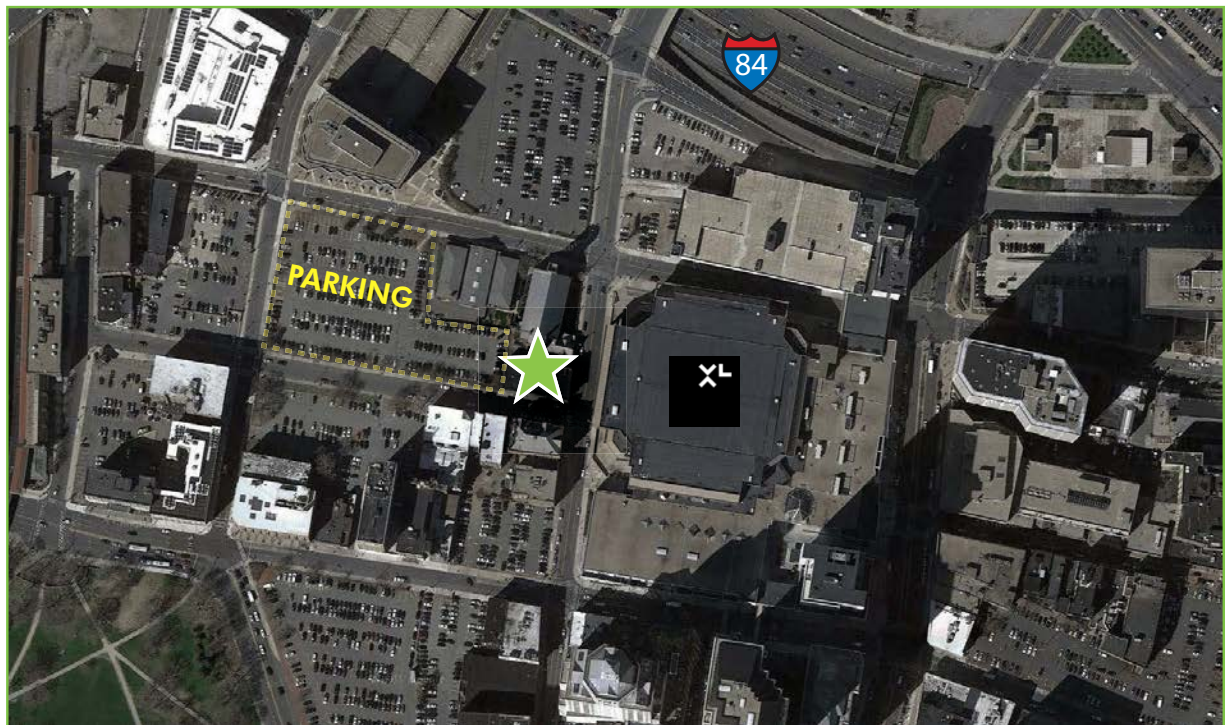
UP TO 3,568 SF

**100**  
**ALLYN STREET**  
HARTFORD, CONNECTICUT

3RD FLOOR:  
UP TO 3,568 SF



★ *PLEASE NOTE: Spaces/layouts can be made wide open if desired - only 3 columns per floor.*



CBRE-NE | 185 Asylum Street | 31st Floor | Hartford, CT 06103

©2015 CBRE, Inc. The information above has been obtained from sources believed reliable. While we do not doubt its accuracy, we have not verified it and make no guarantee, warranty or representation about it. It is your responsibility to independently confirm its accuracy and completeness.

**CBRE** | New England