



Tampa Palms Professional Center Sublease



17413 Bridge Hill Court
Tampa, Florida 33647

Office > Administrative > For Lease

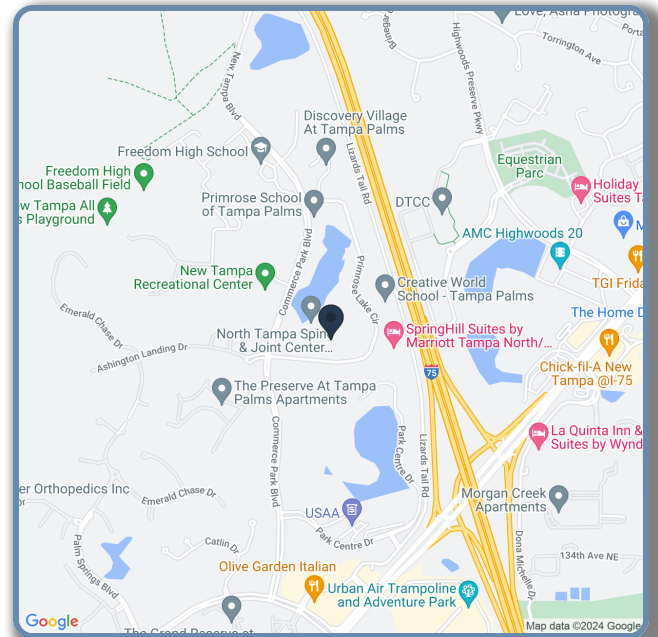
Lease Rate: \$26.00 /sqft MG

2,380 to 2,380 SqFt Available

Exquisite single tenant office in Tampa Palms Professional Center, a 140,000 SF traditional-style, mixed-use complex located on the picturesque Primrose Lake. The complex is a best-in-class office, medical, hospitality, and retail property, making it one of the most sought-after business parks in the region. Building 11 features beautifully landscaped entry, custom wrought-iron entry doors, ten-foot ceilings, and numerous other outstanding features. The complex is located in the heart of the affluent Tampa Palms neighborhood, which features amenities such as top-rated schools, parks, restaurants, and the Tampa Palms Country Club featuring an Arthur Hills design golf course.

Property Highlights

- 24 Hour Access
- Property Manager on Site
- Signage
- Kitchen
- Storage Space
- Natural Light



Michelle Bible
VIP Executive Realty
(813) 475-6019
(727) 365-5402
mbible@tampabay.rr.com



<http://vipexecutiverealty.com/>

All information contained herein has been obtained by the owners and/or other sources deemed reliable, but we make no representations or warranties, expressed or implied, as to its accuracy. Information is submitted subject to the possibility of errors, omissions, change of price, rate, conditions or withdrawal without notice. References to measurements are approximate. All parties to a real estate transaction should seek legal and tax advice prior to commitment. Buyer/Tenant must verify the information and bears all risk for any inaccuracies.

Tampa Palms Professional Center Sublease

17413 Bridge Hill Court, Tampa, Florida 33647



Building entry



Reception



Conference Room



Conference Room (front to back)

Market: Tampa/St. Petersburg
Submarket: Northeast Tampa
Available: 2,380 SqFt
Space Type: Administrative
Year Built: 2004

Parcel ID: A-14-27-19-82Z-000000-00011.0
Land Area: .08 Acres
County: Hillsborough County

Service
to a
Higher
Power®

Michelle Bible
VIP Executive Realty
(813) 475-6019
(727) 365-5402
mbible@tampabay.rr.com

VIP EXECUTIVE
REALTY

<http://vipexecutiverealty.com/>

All information contained herein has been obtained by the owners and/or other sources deemed reliable, but we make no representations or warranties, expressed or implied, as to its accuracy. Information is submitted subject to the possibility of errors, omissions, change of price, rate, conditions or withdrawal without notice. References to measurements are approximate. All parties to a real estate transaction should seek legal and tax advice prior to commitment. Buyer/Tenant must verify the information and bears all risk for any inaccuracies.

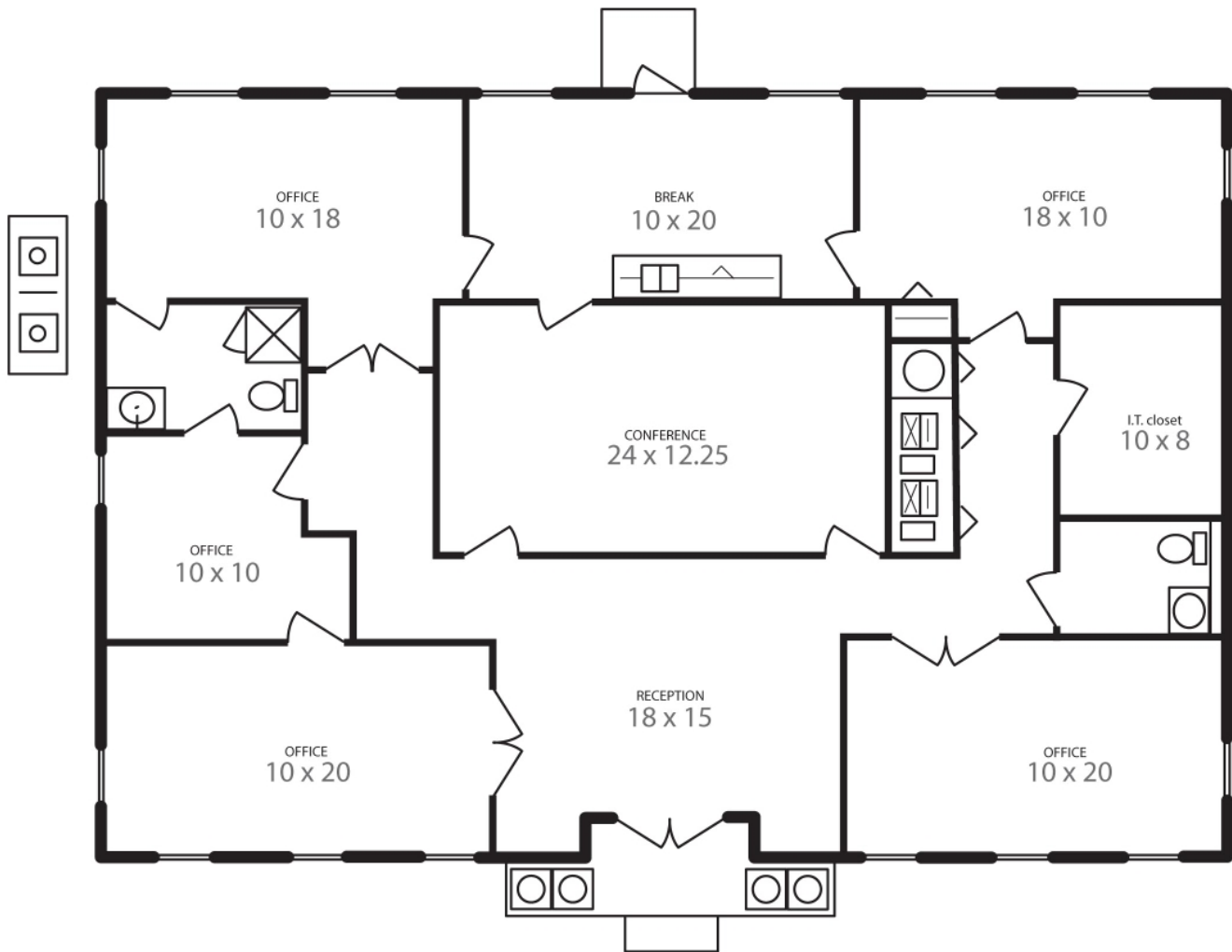
Tampa Palms Professional Center Sublease

17413 Bridge Hill Court, Tampa, Florida 33647



Suite	Floor	Type	Avail	Lease Rate	Position
11	1	Administrative	2380sqft	\$26/sqft MG	

Extremely efficient space with over-sized offices, 2 restrooms (1 with shower) and spacious break area. Refrigerator and microwave included.



Floor Plan 17413 Bridge Hill Ct

Service
to a
Higher
Power®

Michelle Bible
VIP Executive Realty
(813) 475-6019
(727) 365-5402
mbible@tampabay.rr.com



<http://vipexecutiverealty.com/>

All information contained herein has been obtained by the owners and/or other sources deemed reliable, but we make no representations or warranties, expressed or implied, as to its accuracy. Information is submitted subject to the possibility of errors, omissions, change of price, rate, conditions or withdrawal without notice. References to measurements are approximate. All parties to a real estate transaction should seek legal and tax advice prior to commitment. Buyer/Tenant must verify the information and bears all risk for any inaccuracies.