

Point Plaza West Building 1

6835 Capitol Blvd
Tumwater, WA

3rd floor: 5,925 SF

\$19.50/SF modified gross

Tenant pays for utilities and
janitorial

On site, after hours security

On site deli/coffee

Ample parking

Landlord offering
aggressive TI allowance

Common areas and
restrooms remodeled

Great place for servicing
DSHS clients



Building



Contact

Evan Parker

360.705.0174

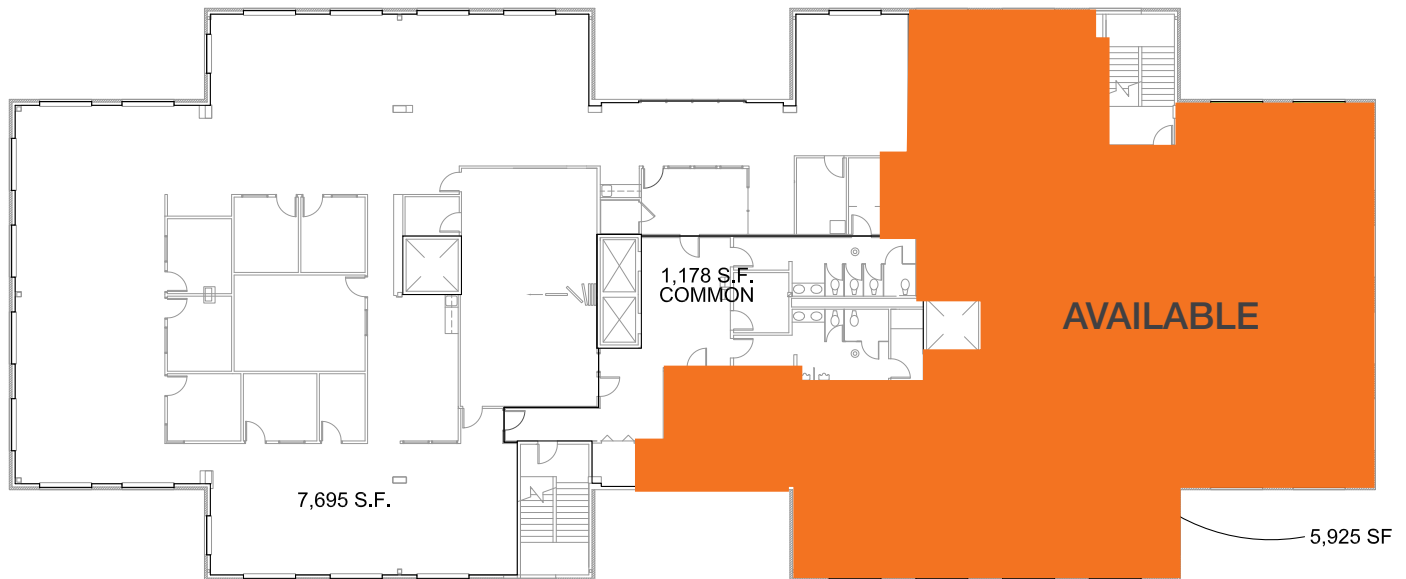
eparker@kiddermathews.com

Amy Evans

360.705.1377

aevans@kiddermathews.com

Point Plaza West - Building 1



Contact

Evan Parker
360.705.0174
eparker@kiddermathews.com

Amy Evans
360.705.1377
aevans@kiddermathews.com