



## Opportunity

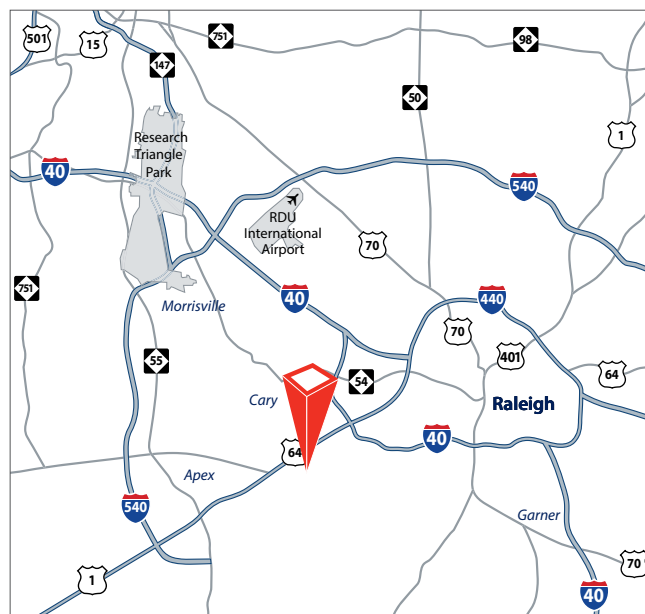
- 2,334-sf built-out suite available
- Space is located on lower level
- Monument signage available on Tryon Road
- ±11,345-sf building constructed in 2000

## Rate

- \$21.00/sf, Net of Utilities & Janitorial

## Location

- Located at the corner of Keisler Drive and Tryon Road
- Less than a mile from WakeMed Cary
- Easy access to US-1/440, US-64 and I-40
- Numerous walkable amenities at nearby Waverly Place

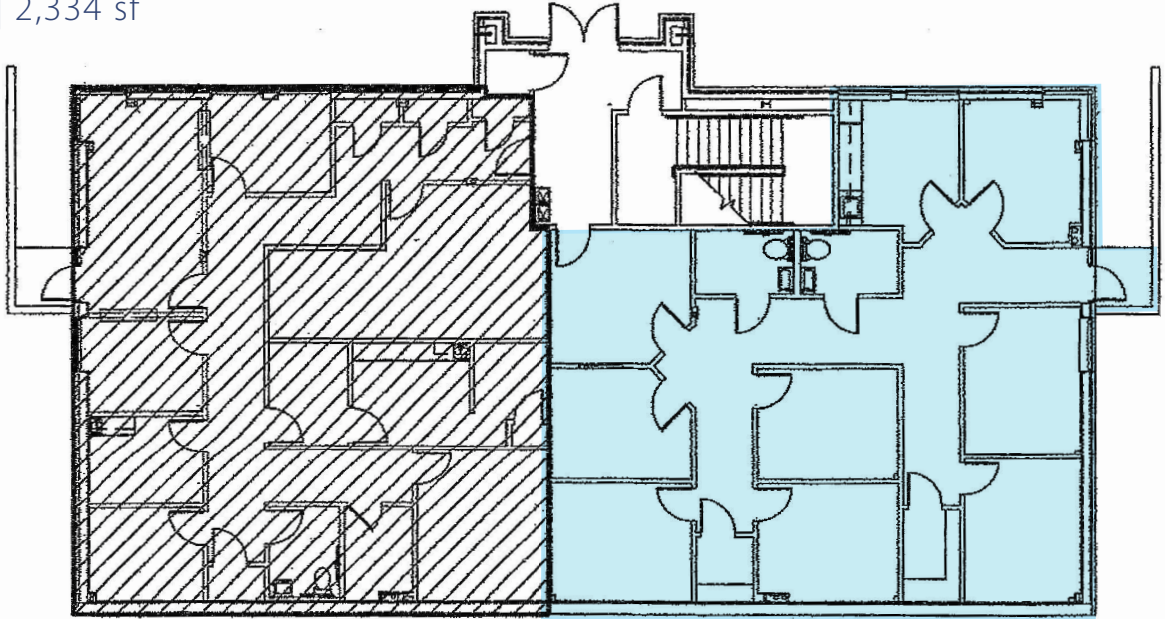


**Carlo DiGiorgio**, Senior Vice President  
D 919 420 1569  
carlo.digiorgio@avisonyoung.com

**Michael Vulpis**, Senior Vice President  
D 919 420 1562  
michael.vulpis@avisonyoung.com

5440 Wade Park Boulevard  
Suite 200  
Raleigh, NC 27607  
919 785 3434

Suite 102 | 2,334 sf



**AVISON  
YOUNG**

[avisonyoung.com](http://avisonyoung.com)

**Carlo DiGiorgio**, Senior Vice President  
D 919 420 1569  
[carlo.digiorgio@avisonyoung.com](mailto:carlo.digiorgio@avisonyoung.com)

**Michael Vulpis**, Senior Vice President  
D 919 420 1562  
[michael.vulpis@avisonyoung.com](mailto:michael.vulpis@avisonyoung.com)



## Nearby Amenities



**AVISON  
YOUNG**

[avisonyoung.com](http://avisonyoung.com)

**Carlo DiGiorgio**, Senior Vice President  
D 919 420 1569  
[carlo.digiorgio@avisonyoung.com](mailto:carlo.digiorgio@avisonyoung.com)

**Michael Vulpis**, Senior Vice President  
D 919 420 1562  
[michael.vulpis@avisonyoung.com](mailto:michael.vulpis@avisonyoung.com)