

# RIDGEWOOD CENTER

33650 6TH AVE S | FEDERAL WAY, WA

## FOR LEASE

2,393 SF, 3,519 SF,  
3,590 SF & 5,912 SF










THE ANDOVER  
COMPANY, INC.  
CORFAC INTERNATIONAL

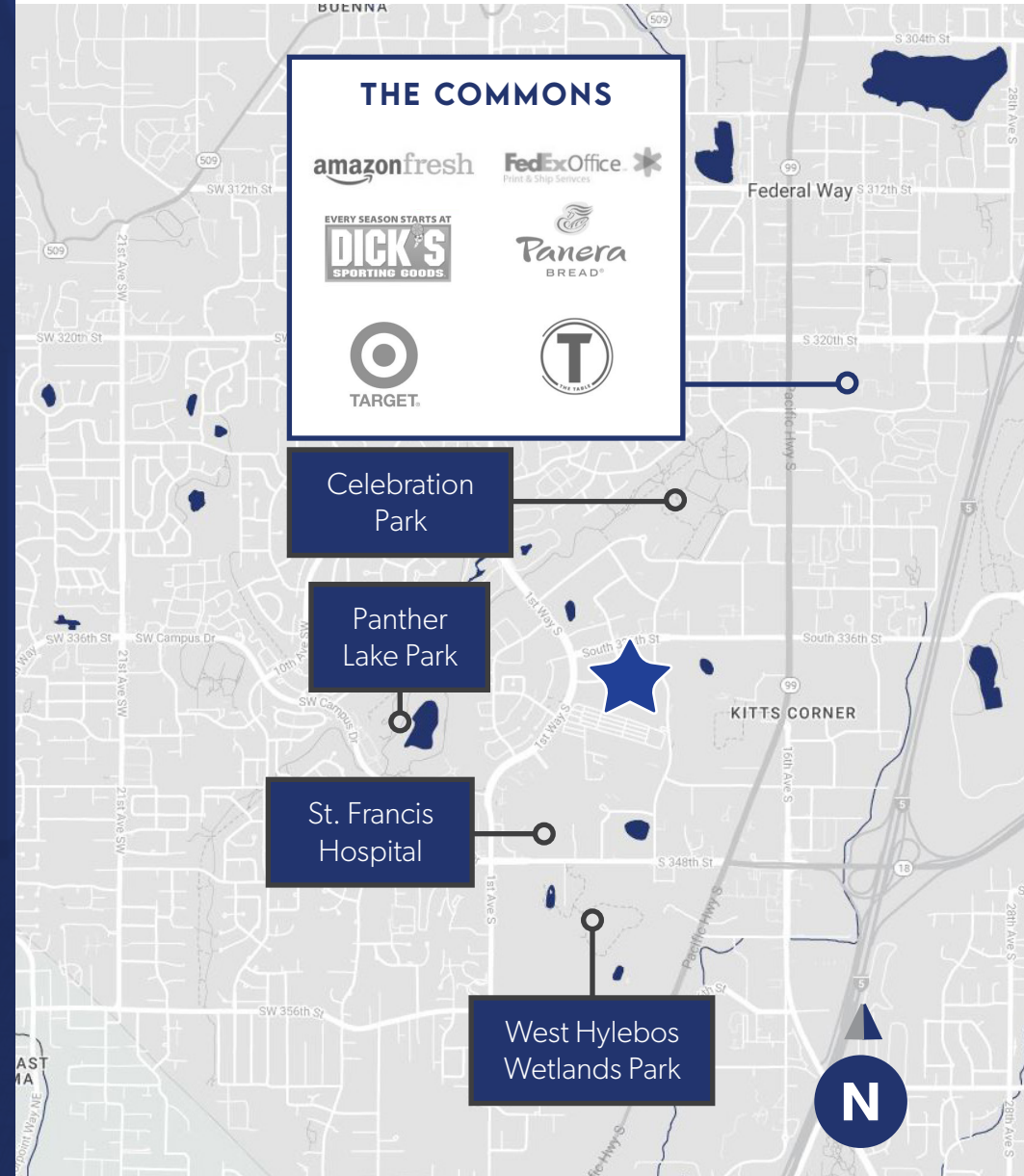
**SHANE MAHVI**  
(206) 336-5338  
smahvi@andoverco.com

**BRIAN BRUININKS, CCIM**  
(206) 336-5324  
bbruininks@andoverco.com

# PROPERTY HIGHLIGHTS

The information contained herein has been obtained from reliable sources, but is not guaranteed. A prospective buyer/tenant should verify each item relating to this property and all information contained herein.

-  AMPLE FREE SURFACE PARKING
-  COVERED PARKING IS FREE AT 1/1,000 RSF
-  CLOSE PROXIMITY TO THE COMMONS SHOPPING MALL & ST. FRANCIS HOSPITAL
-  LOCATED ON MAIN ARTERIAL; I-5 AND S/99
-  PROJECT AMENITIES INCLUDE CONFERENCE ROOM AND FITNESS CENTER
-  STORAGE AVAILABLE
-  INCOMING RENOVATIONS TO LOBBY AND COMMON AREAS



# PROPERTY PHOTOS

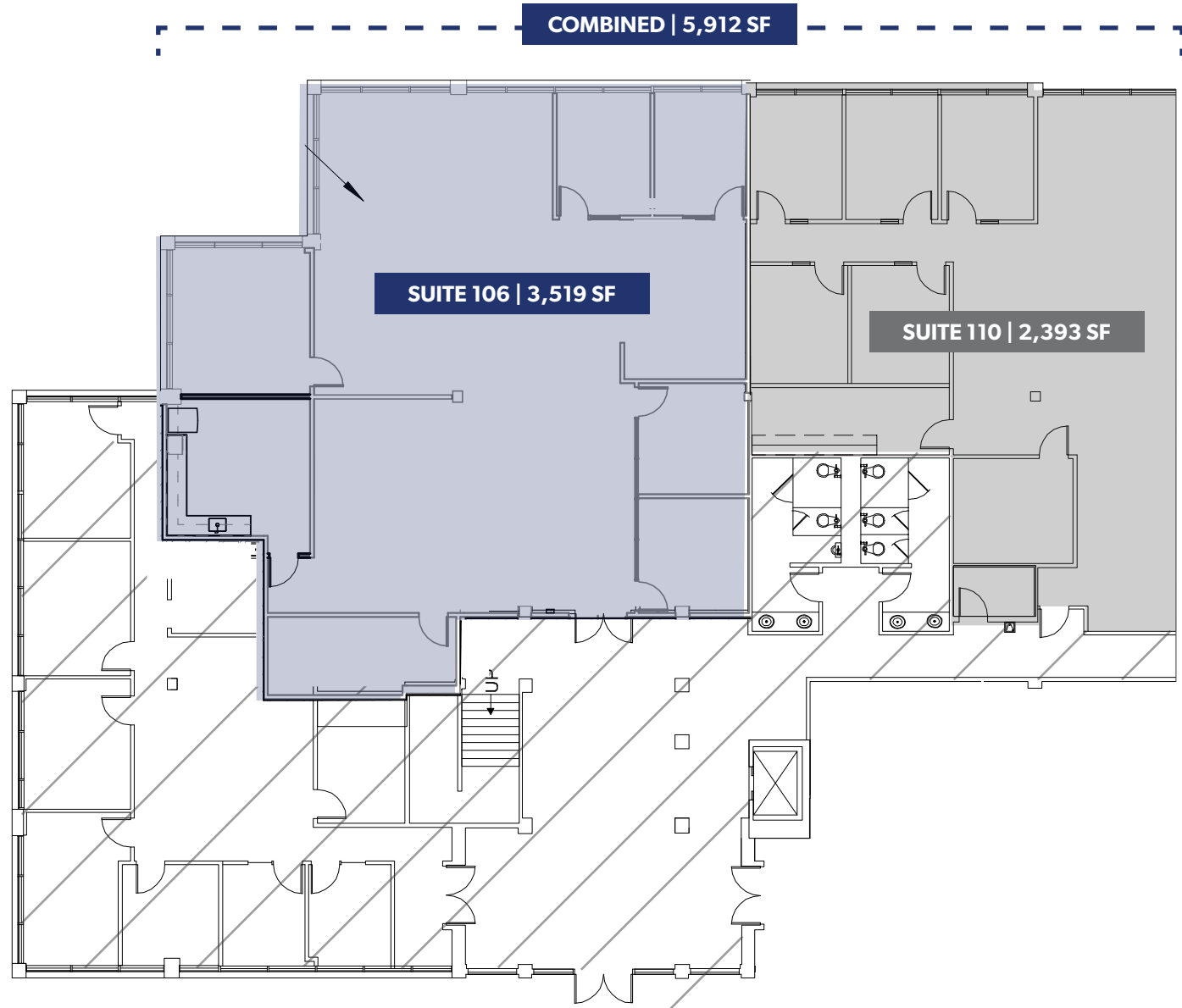


# SUITE 106 + 110

5,912 SF TOTAL

SUITE 106 | 3,519 SF

SUITE 110 | 2,393 SF



SUITE  
210

3,590 SF TOTAL

