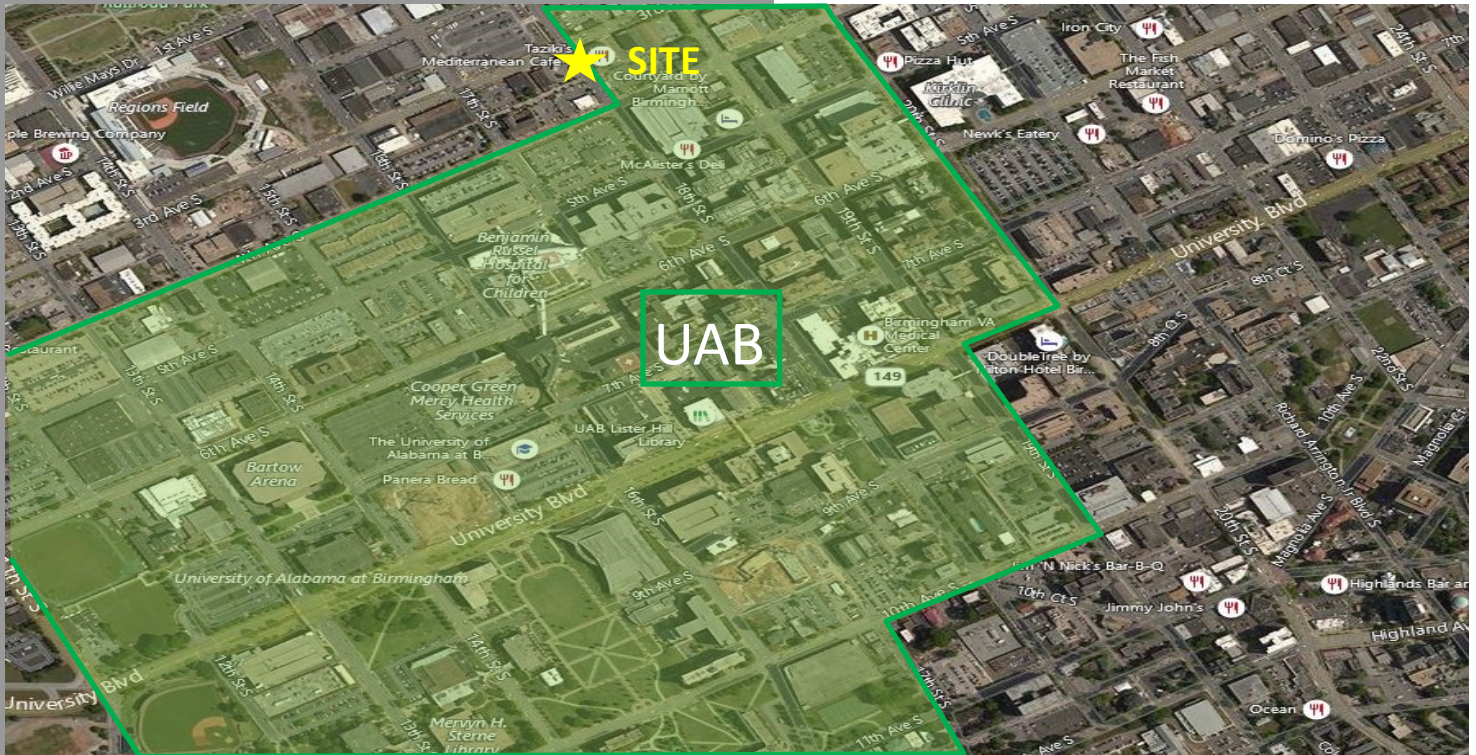


# Wells Fargo UAB Location Drive-Thru Corner of 3rd Avenue South & 18th Street South Birmingham, AL



Andrew Loveman, CCIM  
Andrew@hsccommercial.com  
205-380-3329

Demographics	1 Mile Radius
Daytime Population	125,906

- 0.32 acres—DRIVE-THRU PROPERTY ONLY
- 909 sf building
- Adjacent to University of Alabama – Birmingham campus and hospital
- Perpetual financial restriction
- ~~\$1,100,000~~
- \$ 999,000



HYDINGER STEWART & CHEW  
COMMERCIAL PROPERTIES, LLC

2200 Woodcrest Place, Suite 330, Birmingham, Alabama 35209 | 205-380-3333 | www.hsccommercial.com

The information contained herein is from sources deemed reliable, however, Hydinger, Stewart & Chew Commercial Properties makes no warranties or representations to the accuracy thereof.