

For Lease/Sale
7,109 SF



1905 Stone Myers Parkway

Grapevine, Texas 76051

Property Features

- New Construction - Class A Office Space
- Open Floor Plan With Exposed Ceilings
- 1 Grade Level Door With Warehouse
- Building Signage
- Close Proximity to DFW Airport and Highways 114, 121 and 360.



Colt Power, SIOR, CCIM

817 872 3905
cpower@robertlynn.com

Rob Kearney

817 872 3212
rkearney@robertlynn.com



THE INFORMATION CONTAINED HEREIN HAS BEEN GIVEN TO US BY THE OWNER OF THE PROPERTY OR OTHER SOURCES WE DEEM RELIABLE. WE HAVE NO REASON TO DOUBT ITS ACCURACY, BUT WE DO NOT GUARANTEE IT. ALL INFORMATION SHOULD BE VERIFIED PRIOR TO PURCHASE OR LEASE.

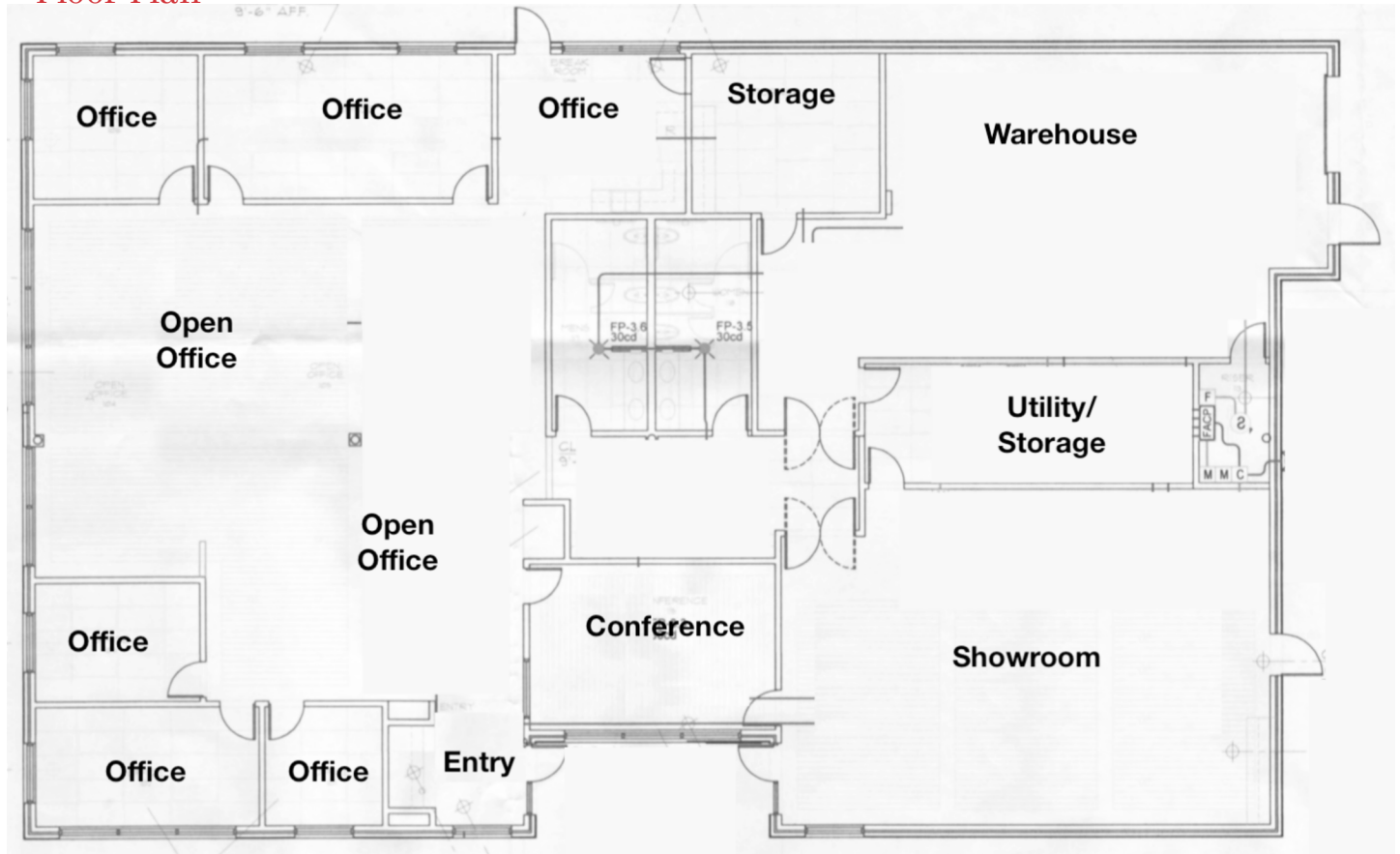
1200 Summit Avenue Suite 800
Fort Worth TX 76102
817 885 8333

nairl.com

For Lease/Sale
7,109 SF

1905 Stone Myers Parkway
Grapevine, Texas 76051

Floor Plan



For Lease/Sale
7,109 SF

1905 Stone Myers Parkway

Grapevine, Texas 76051

Site Plan

