

Available for Lease



Office Building

1000 Burr Ridge Parkway | Burr Ridge, Illinois

Highlights

- Beautiful building with fantastic window lines.
- Conveniently located less than a mile from I-55 with easy access to I-355, I-294 and Route 83.
- On Site Conference Center Available (150 person capacity)
- Surface parking available (4/1,000)
- Multiple Nearby Amenities:
 - Marriott Hotel
 - Lifetime Fitness
 - Burr Ridge Village Center
www.burrridgevillagecenter.com
 - Cooper's Hawk Winery & Restaurant
 - Topez Cafe
 - Kohler Waters
 - Spa
 - Estate Residential
 - Condominiums
 - Luxury Residential Lofts
 - Among numerous other retailers

Available

- Suite A: 5,040 SF

Price

- Lease Price: \$25.00 Gross PSF

Building Specifications

- Total Building: 57,222 SF
- Stories: 3
- Class: A Office
- Year Built: 2002

For More Information, Contact:

Rawly Lantz

D: 630.729.7944

M: 630.810.0300 Ext. 116

rlantz@cawleychicago.com

Tony Russo

D: 630.729.7935

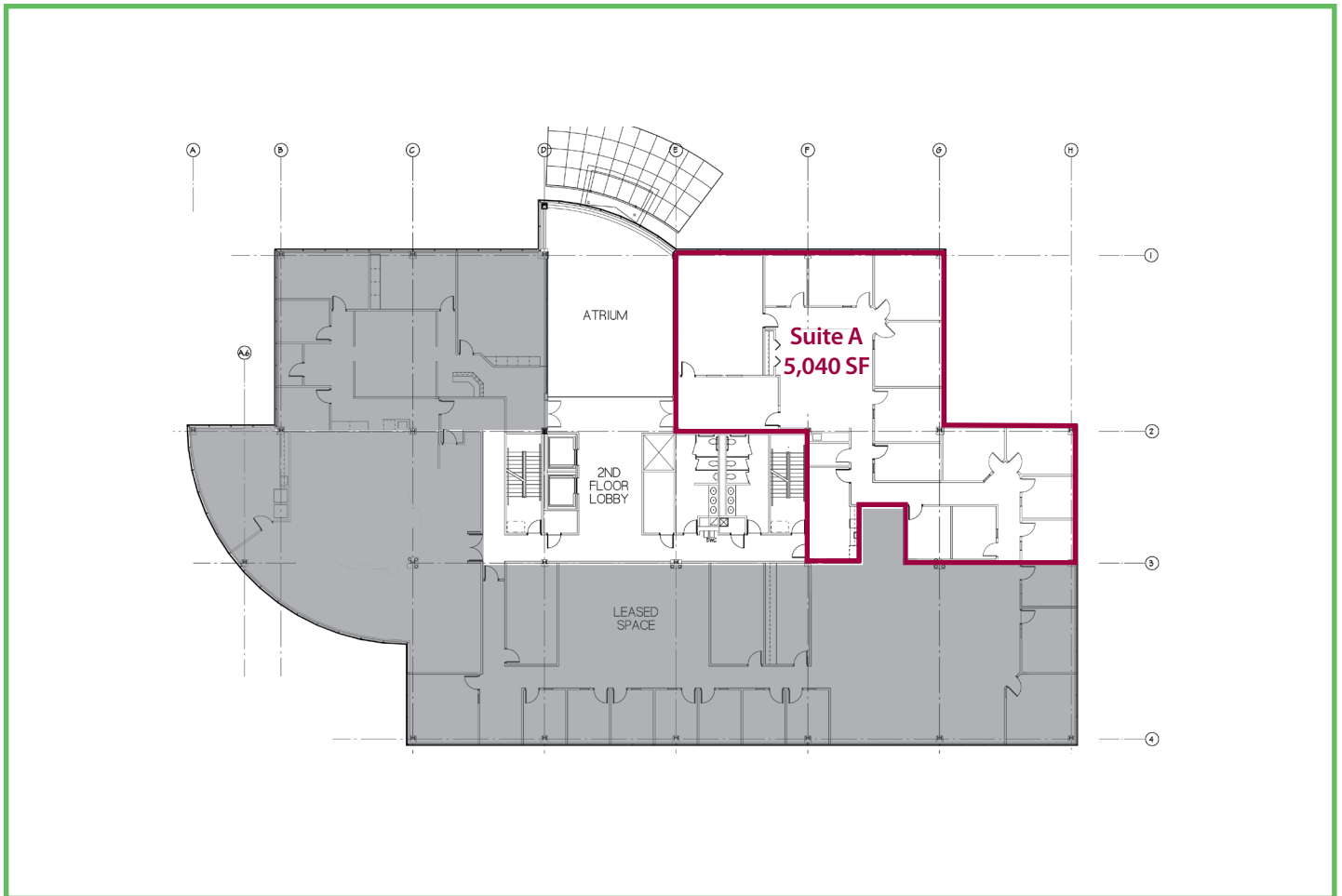
M: 630.810.0300 Ext. 112

trusso@cawleychicago.com



Floor Plans

1000 Burr Ridge Pkwy | Burr Ridge



For More Information, Contact:

Rawly Lantz

D: 630.729.7944

M: 630.810.0300 Ext. 116

rlantz@cawleychicago.com

Tony Russo

D: 630.729.7935

M: 630.810.0300 Ext. 112

trusso@cawleychicago.com