

the

# EMBASSY

portfolio

E



3875 EMBASSY PARKWAY

This stunning three story property offers an attractive atrium ideal for corporate events and a stellar view of Crystal Lake. One of the largest multi-tenant facilities in the Park, it is designed for the classic corporate user.

- *Grand atrium for events*
- *Suites with lake views*

## AVAILABILITIES

*Suite 270 - 9,586 RSF*



[WWW.CBRE.US/EMBASSYPORTFOLIO](http://WWW.CBRE.US/EMBASSYPORTFOLIO)

FOR MORE  
INFORMATION,  
PLEASE CONTACT:

*susan lines*  
+1 330 670 4411  
[susan.lines@cbre.com](mailto:susan.lines@cbre.com)

*gary rickel*  
+1 330 670 4414  
[gary.rickel@cbre.com](mailto:gary.rickel@cbre.com)

*zada brenner*  
+1 330 670 4418  
[zada.brenner@cbre.com](mailto:zada.brenner@cbre.com)

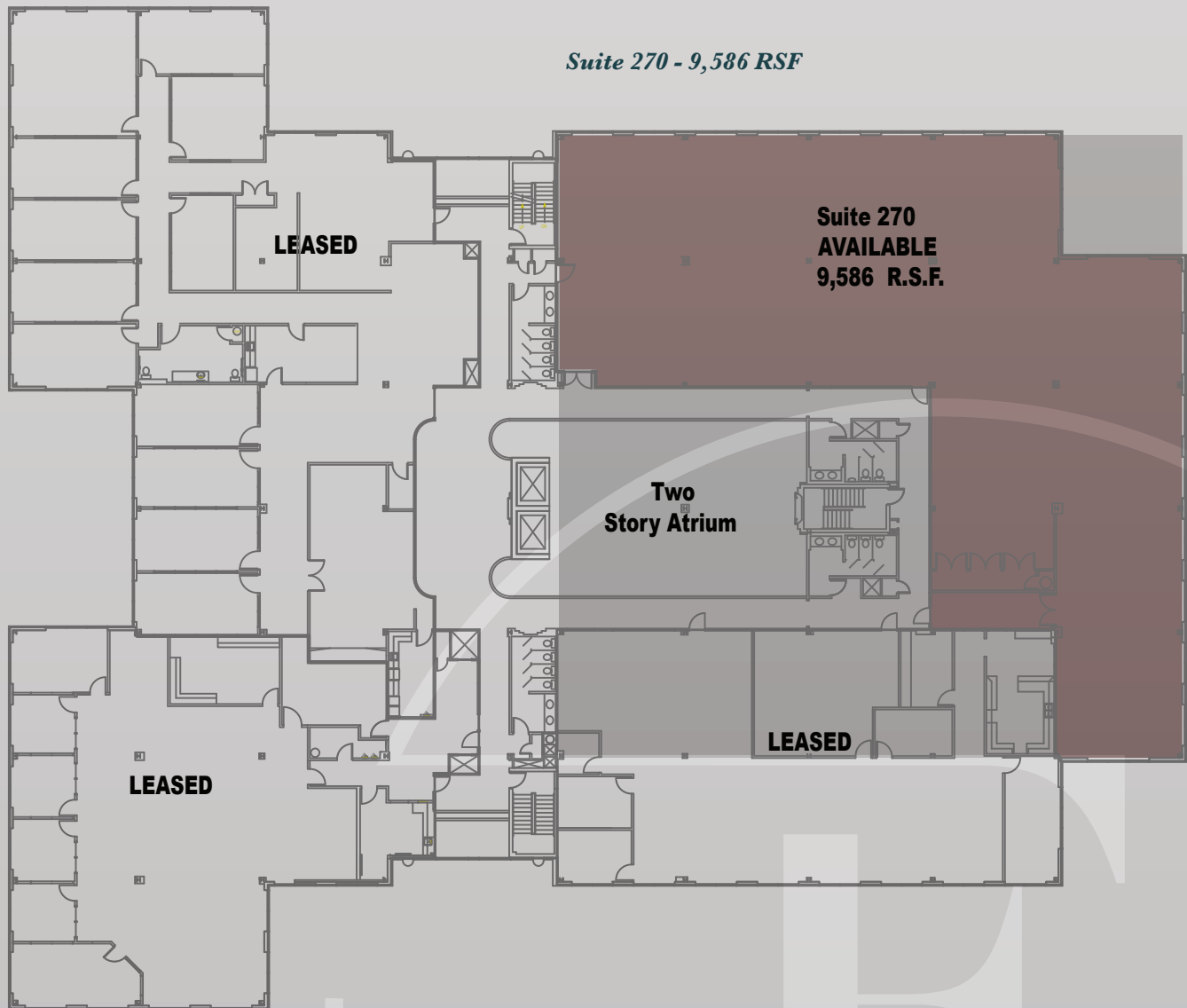
**CBRE**

the  
**EMBASSY**  
portfolio



**Rental Rate: \$19.00 per RSF**

- Rates include parking, in-suite cleaning, water, sewer, and gas.
- Tenant pays in-suite electric and pro-rata share of common area electric.



**3875 Embassy Parkway, Akron, Ohio 44333**

**FOR MORE  
INFORMATION,  
PLEASE CONTACT:**

**susan lines**  
+1 330 670 4411  
susan.lines@cbre.com

**gary rickel**  
+1 330 670 4414  
gary.rickel@cbre.com

**zada brenner**  
+1 330 670 4418  
zada.brenner@cbre.com

© 2019 CBRE, Inc. All rights reserved. This information has been obtained from sources believed reliable, but has not been verified for accuracy or completeness. Any projections, opinions, or estimates are subject to uncertainty. The information may not represent the current or future performance of the property. You and your advisors should conduct a careful, independent investigation of the property and verify all information. Any reliance on this information is solely at your own risk. CBRE and the CBRE logo are service marks of CBRE, Inc. and/or its affiliated or related companies in the United States and other countries. All other marks displayed on this document are the property of their respective owners. Photos herein are the property of their respective owners and use of these images without the express written consent of the owner is prohibited.

**CBRE**