



Altamonte North Business Center

375 Douglas Avenue, Altamonte Springs, FL 32714



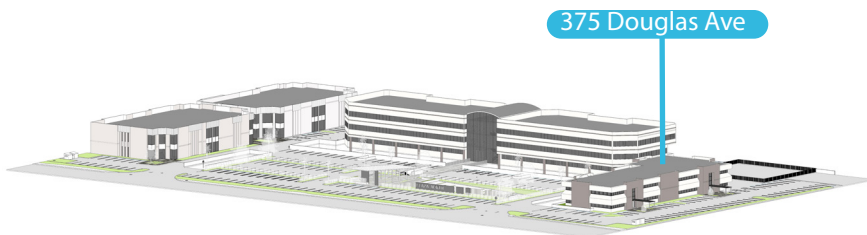
Landlord accepting short term deals - Year 1 Rate - \$15 psf

Call broker for details



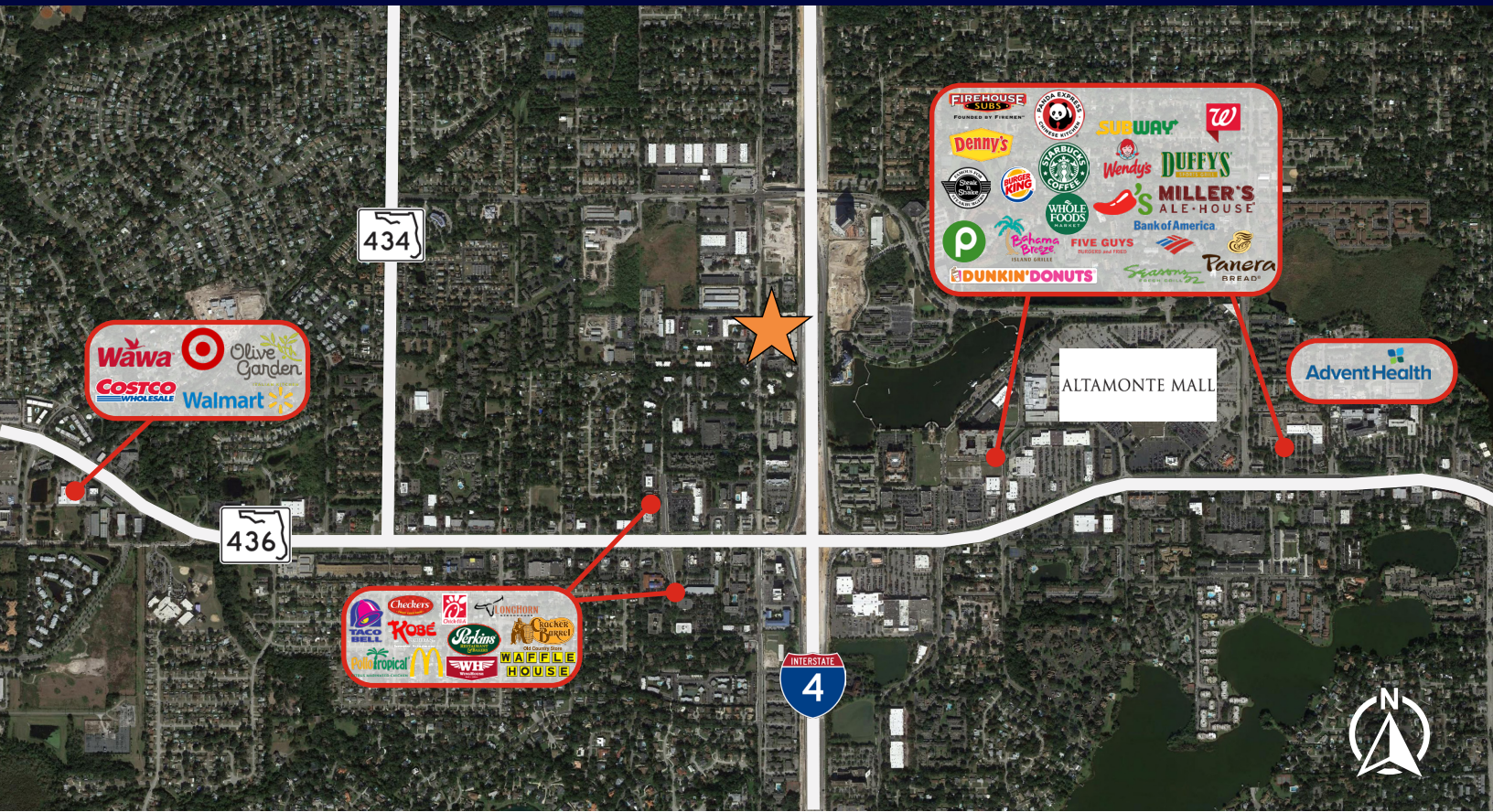
375 Douglas Ave

- Newly renovated office buildings - interior and exterior
- Four-building office park located off Douglas Avenue in Altamonte Springs
- Interstate-4 frontage, building and monument signage available
- On-site management office and building engineer
- Ample surface and covered parking



Nathan Eissler, CCIM, SIOR, Principal
 D 407 440 6658
 C 407 342 7494
 nathan.eissler@avisonyoung.com

135 W Central Boulevard
 Suite 700
 Orlando, FL 32801
 407 219 3500



**AVISON
YOUNG**

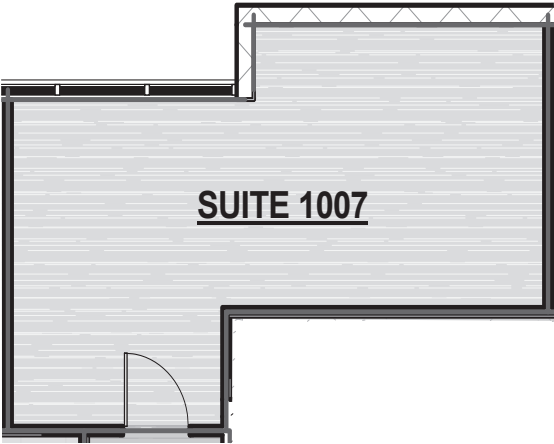
avisonyoung.com

Nathan Eissler, CCIM, SIOR, Principal
 D 407 440 6658
 C 407 342 7494
 nathan.eissler@avisonyoung.com

135 W Central Boulevard
 Suite 700
 Orlando, FL 32801
 407 219 3500

Building 375 - First Floor
Suite 1007 - 393± sf

Altamonte North Business Center /
375 Douglas Avenue



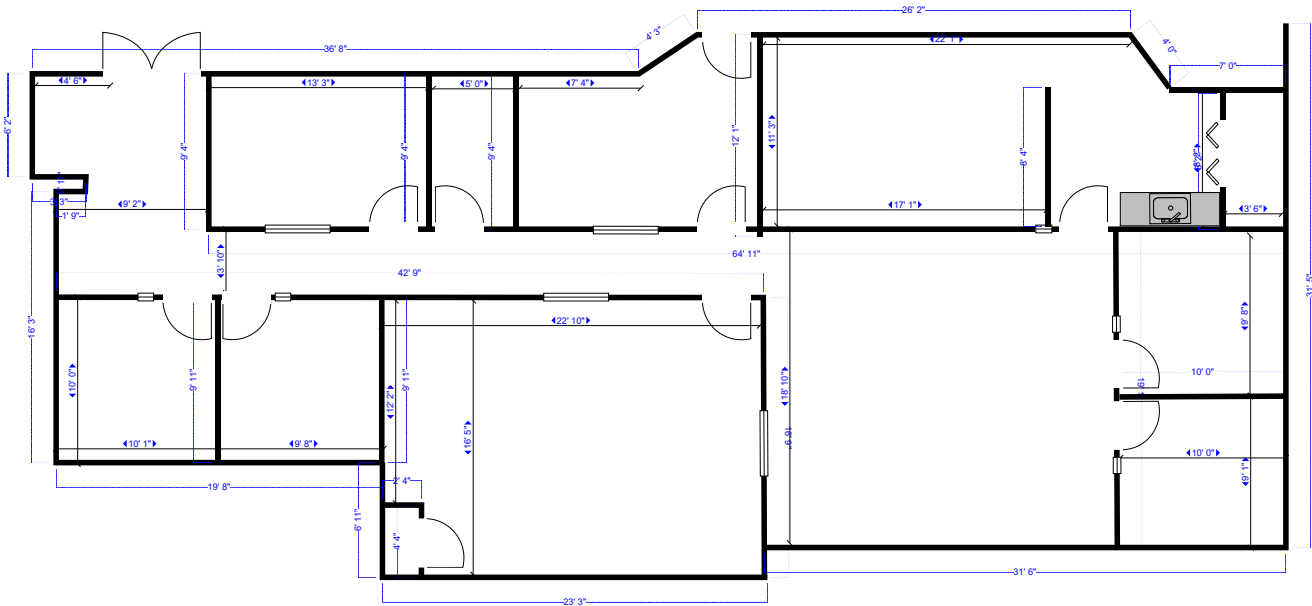
avisonyoung.com

Nathan Eissler, CCIM, SIOR, Principal
D 407 440 6658
C 407 342 7494
nathan.eissler@avisonyoung.com

135 W Central Boulevard
Suite 700
Orlando, FL 32801
407 219 3500

Building 375 - First Floor
Suite 1008 - 2,846± sf

Altamonte North Business Center /
375 Douglas Avenue



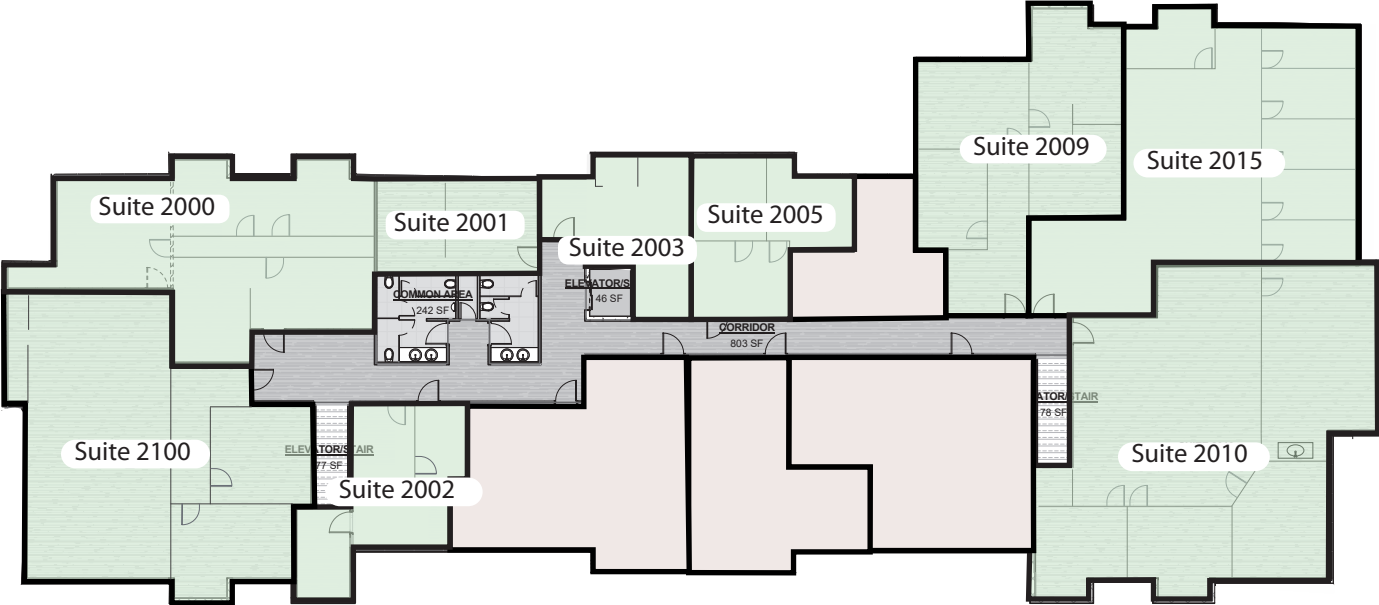
avisonyoung.com

Nathan Eissler, CCIM, SIOR, Principal
D 407 440 6658
C 407 342 7494
nathan.eissler@avisonyoung.com

135 W Central Boulevard
Suite 700
Orlando, FL 32801
407 219 3500

Building 375 - Second Floor

- Suite 2000 - 1,090± sf
- Suite 2001 - 226± sf
- Suite 2002 - 457± sf
- Suite 2003 - 374± sf
- Suite 2005 - 465± sf
- Suite 2009 - 991± sf
- Suite 2010 - 1,947± sf
- Suite 2015 - 1,457± sf
- Suite 2100 - 1,555± sf



avisonyoung.com

Nathan Eissler, CCIM, SIOR, Principal
D 407 440 6658
C 407 342 7494
nathan.eissler@avisonyoung.com

135 W Central Boulevard
Suite 700
Orlando, FL 32801
407 219 3500