

FOR
SALE



11423 SATELLITE BLVD

ORLANDO, ORANGE COUNTY, FL | 239,745 SF | 12.25 ACRES



CITE PARTNERS

PROPERTY SPECIFICATIONS

THE PROPERTY

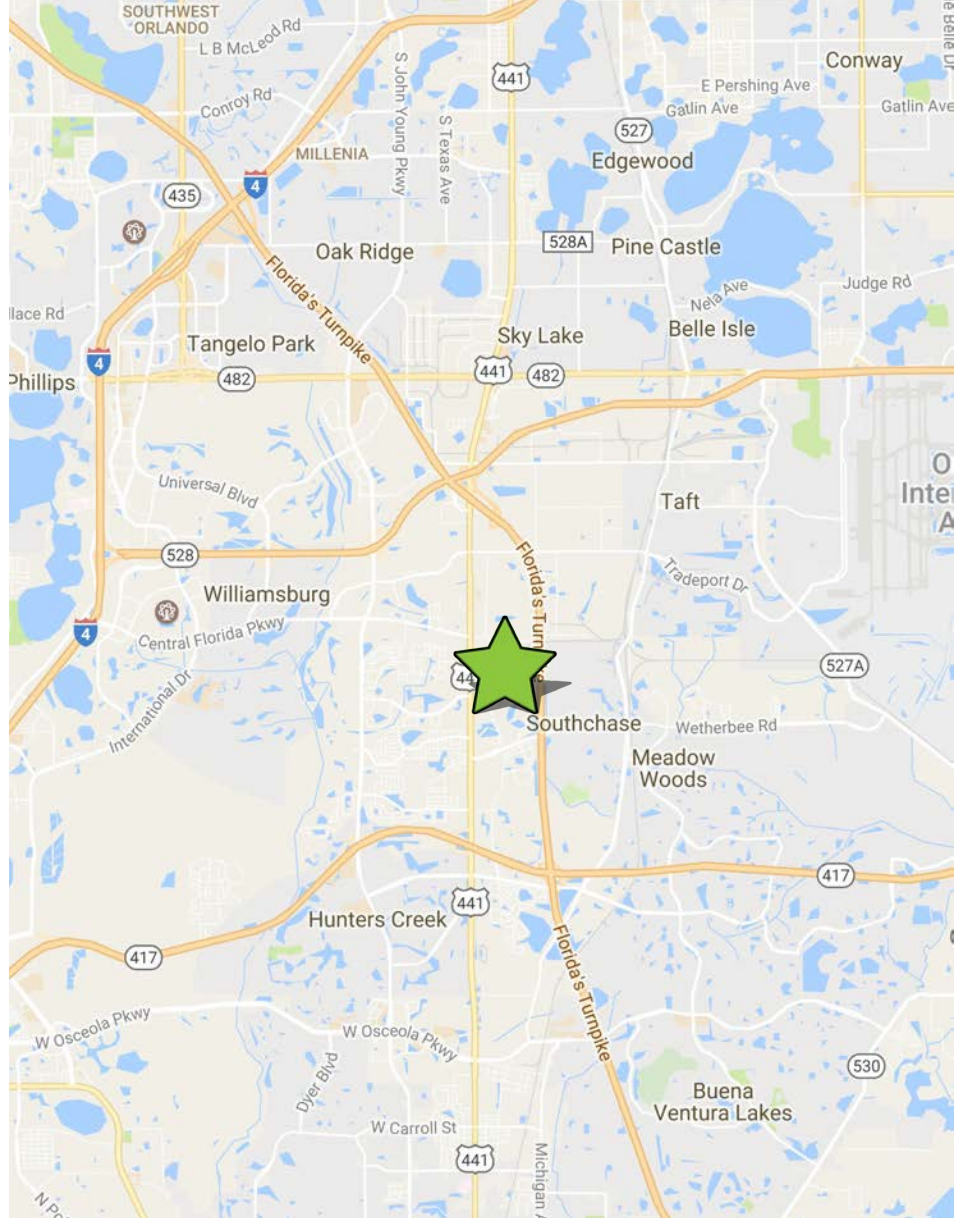
- 239,745 SF
- 7,465 SF of office
- 15'8" to 26'4" clear height
- Doors:
 - 10 - 10' x 10' dock doors
 - 13 - 8' x 10' dock doors
 - 5 - 8' x 8' dock doors
 - 4 - 6' x 8' dock doors
 - 1 grade level door
- Rear/side load
- Block and metal construction
- Sprinklered
- Heavy power
- Metal Halide and fluorescent lighting
- Abundant parking
- Built in 1965/2000/2003
- 12.28 Acres
- Zoned I-4, Orange County - allows for outside storage

LOCATION

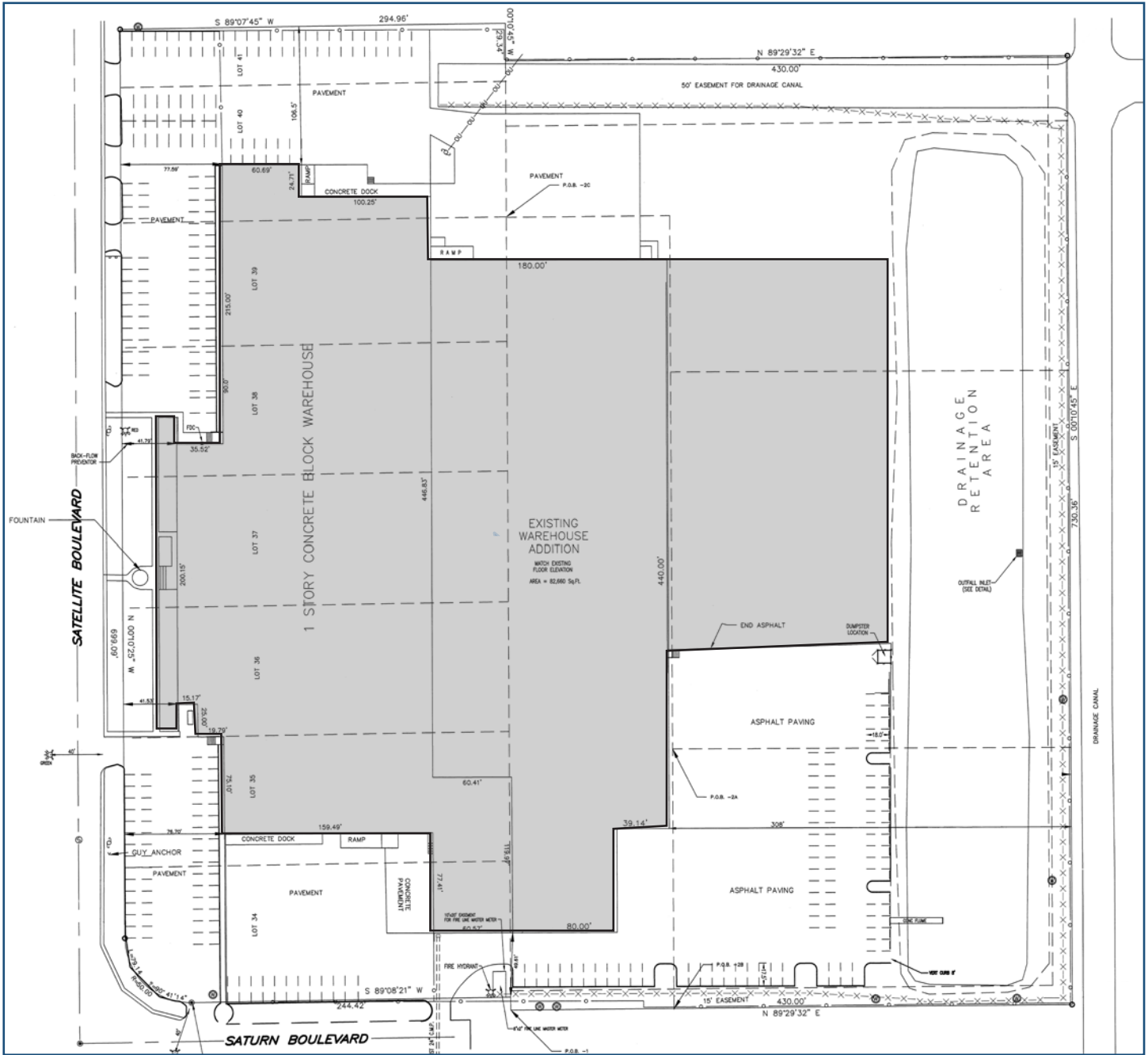
The property is located in Regency Industrial Park on the east side of Satellite Boulevard, south of Taft Vineland Road. It offers immediate access to US Highway 441 and is minutes from the Beachline Expressway-Florida Turnpike interchange, Orange Avenue, Central Florida Parkway, and John Young Parkway. Points of interest include The Ritz Carlton, JW Marriott, Sea World Theme Parks, Orange County Convention Center, the Florida Mall, Orlando International Airport, and the International Drive tourist corridor.

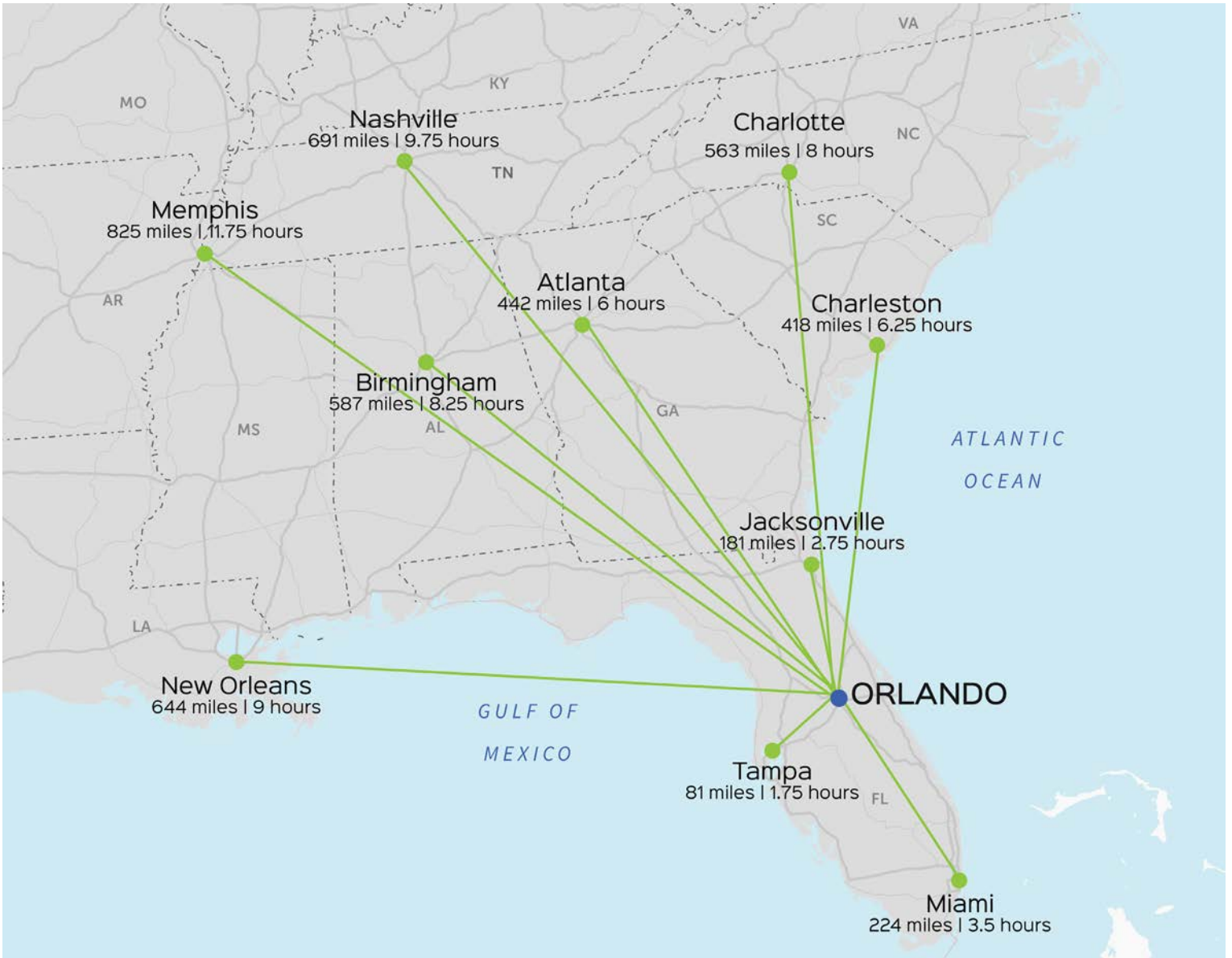
THE PRICE

\$14,750,000 (\$62.57/SF)



SITE PLAN





MATT SULLIVAN, SIOR, CCIM
Managing Director, Principal
matt.sullivan@citepartners.com
407.930.1802

WILSON MCDOWELL, SIOR, CCIM
Managing Director, Principal
wilson.mcdowell@citepartners.com
407.930.1801

BOBBY ISOLA, CCIM
Director, Principal
bobby.isola@citepartners.com
407.930.1804

CITE PARTNERS
100 East Pine St., Suite 200
Orlando, FL 32801
www.citepartners.com