



637 WASHINGTON STREET

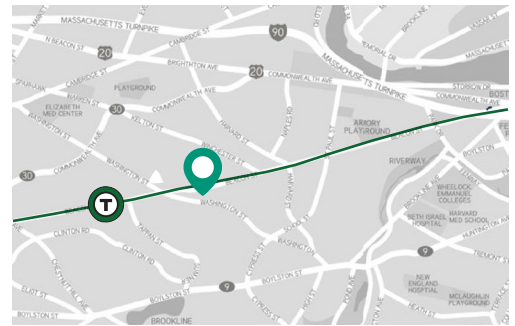
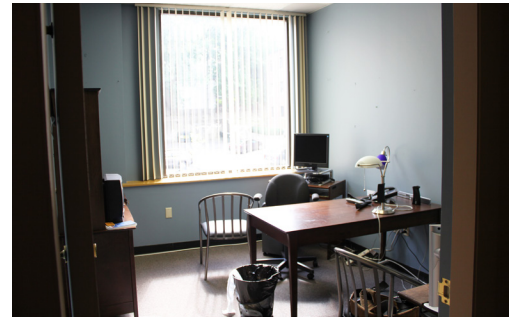
128 WEST | BROOKLINE, MA

FLOOR	SPACE	DATE AVAILABLE
2nd Floor	700 SF	Immediately

- Newly Completed Common Area & Bathroom Renovations
- Located in Washington Place Medical Park
- Easy Access to Public Transportation
- Ample Parking
- All the Amenities of Washington Square

ELLISON PATTEN
617.951.4136
epatten@pc.com

LINCOLN
PROPERTY
COMPANY



637 WASHINGTON STREET

128 WEST | BROOKLINE, MA

BUILDING SPECIFICATIONS

Building Size	25,000 SF
Available Space	700 SF
Rental Rate	Negotiable
Parking	Ample
Public Transport	Green Line - C
Area Amenities	Washington Square Restaurants Day Care

ELLISON PATTEN
617.951.4136
epatten@lpc.com

LINCOLN
PROPERTY
COMPANY

