

BREAKING GROUND
August 1, 2020

For Lease

701 12th Street, Carlstadt/Wood-Ridge, NJ
± 64,390 SF New Construction

Available July 2021

Prime Last Mile Meadowlands Location

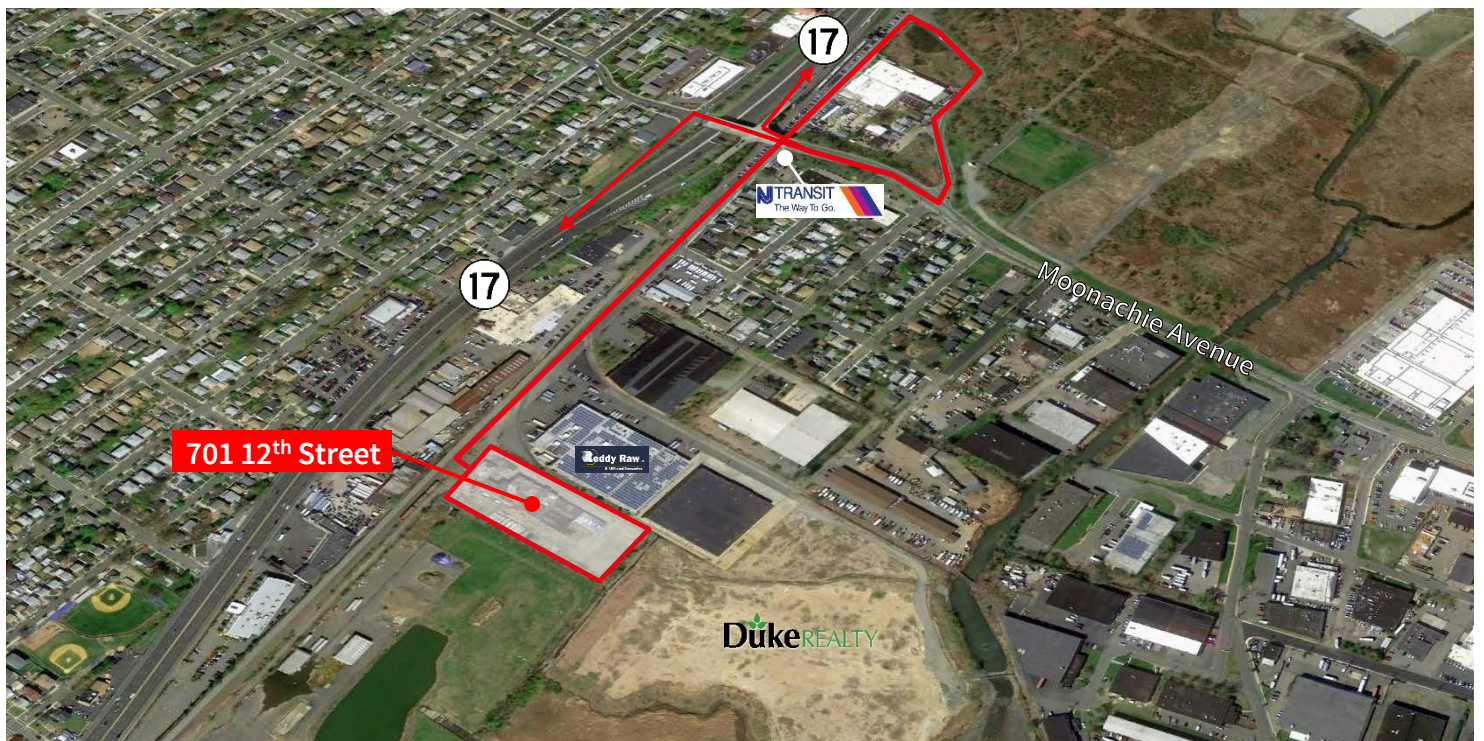


Available For Lease

Carlstadt/Wood-Ridge, NJ

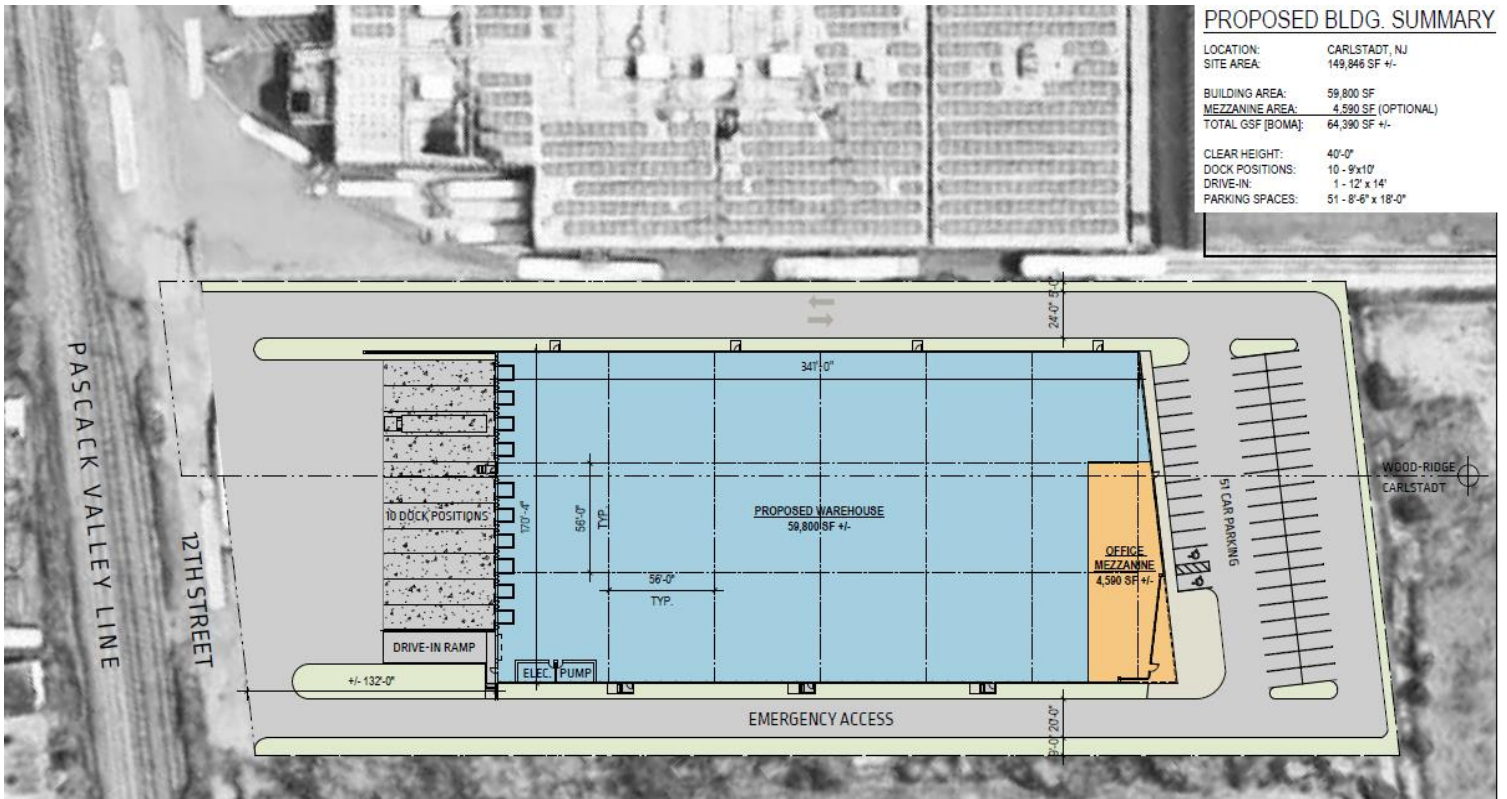
Specifications

Total Size:	± 64,390 SF
Building Footprint:	± 59,800SF
Mezzanine (future):	± 4,590 SF
Building Dimensions:	170' 4" x 361' 2"
Acres:	3.43
Ceiling Height:	40' clear
Loading:	10 docks, 1 drive-in
Dock Equipment:	40,000 lb. capacity mechanical pit levelers with bumpers, dock seals and z-guards
Column Spacing:	56' x 56'
Floor Slab:	7" thick, 4,000 PSI & FF 45/ FL35
Sprinkler:	ESFR
Power:	2,000 amp, 480/277, 3 phase
Car Parking:	51 spaces
Availability:	July 2021

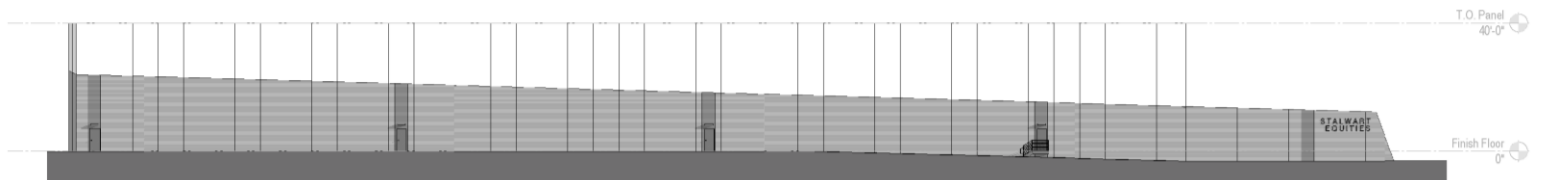


Concept Plan

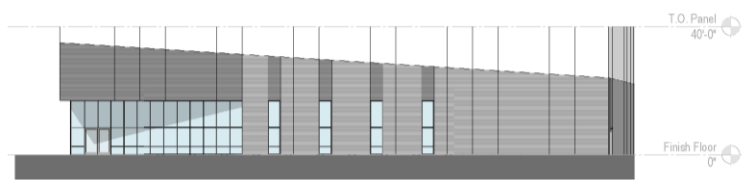
Delivering July 2021



Elevation Renderings



NORTH ELEVATION



EAST ELEVATION

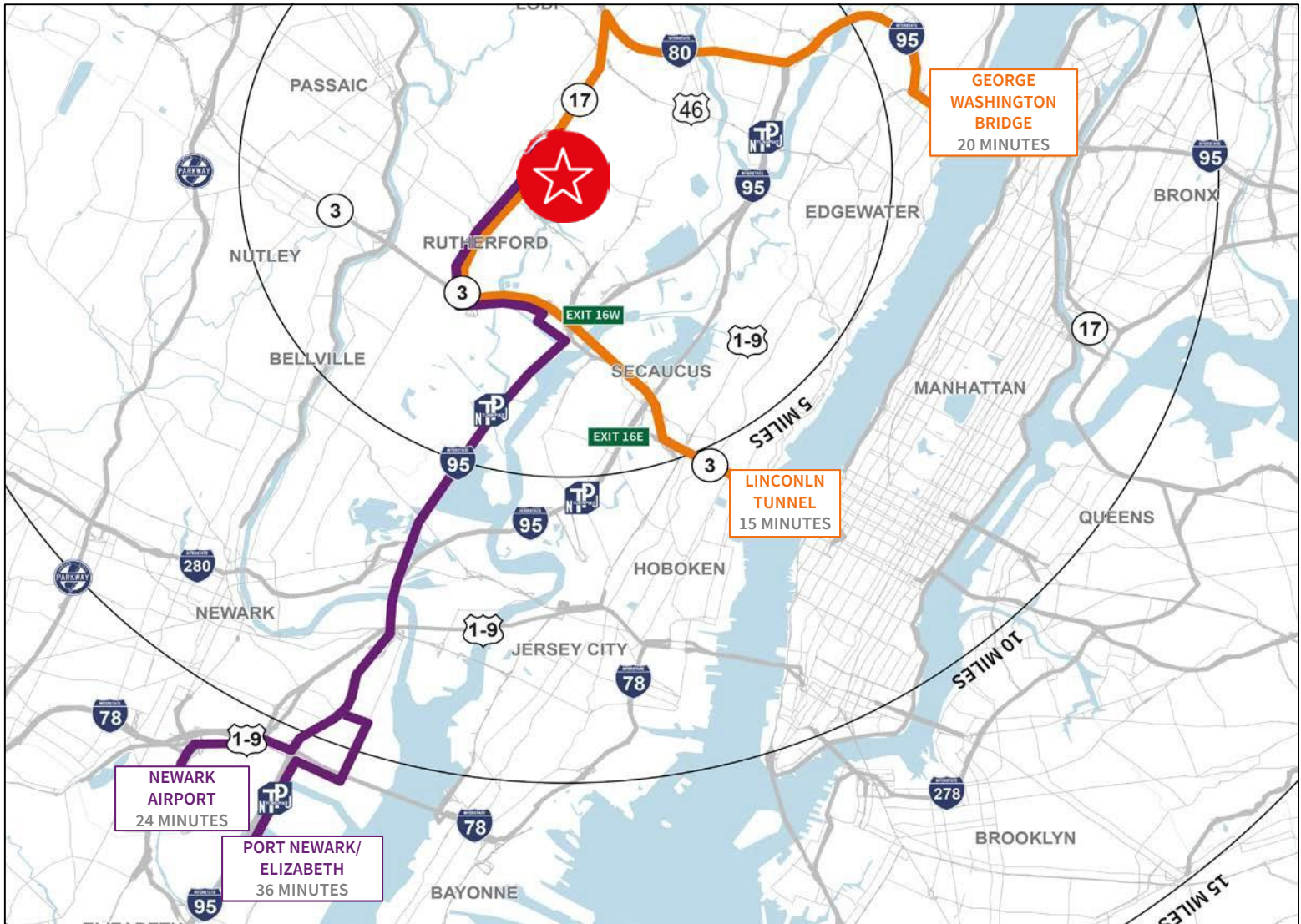


WEST ELEVATION

701 12th Street, Carlstadt/Wood-Ridge, NJ

Prime Location

- .36 miles to the Wood-Ridge New Jersey Transit Rail Station and Pascack Valley Line
- 4.4 miles to I-95 (NJ Turnpike) Exit 16W
- 9.5 miles to George Washington Bridge
- 9.7 miles to Lincoln Tunnel
- 10.5 miles to I-280
- 15.5 miles to Port Newark / Elizabeth via NJTP
- 15.5 miles Newark Liberty Int'l Airport



For more information, please contact:



Chris Hile
Senior Managing Director
+1 201 528 4416
chris.hile@am.jll.com

Chad Hillyer
Managing Director
+1 732 590 4173
chad.hillyer@am.jll.com



DISCLAIMER

Although information has been obtained from sources deemed reliable, neither Owner nor JLL makes any guarantees, warranties or representations, express or implied, as to the completeness or accuracy as to the information contained herein. Any projections, opinions, assumptions or estimates used are for example only. There may be differences between projected and actual results, and those differences may be material. The Property may be withdrawn without notice. Neither Owner nor JLL accepts any liability for any loss or damage suffered by any party resulting from reliance on this information. If the recipient of this information has signed a confidentiality agreement regarding this matter, this information is subject to the terms of that agreement. ©2019. Jones Lang LaSalle IP, Inc. All rights reserved.