



www.FullerRE.com

# Parker Commercial Land For Sale

## NEC Chambers Rd. & Hess Rd., Parker, CO



- Located in City of Parker next to strong residential growth area.
- 13.8 acres zoned and platted for commercial.
- Water and sewer to the site.
- No on-site detention required.
- Hess Road now complete to I-25, becoming the new southern access to Parker.
- Across from two, large, recently approved developments:
  - \*Anthology North: 1,208 acres, includes 3,305 units, commercial and schools
  - \*Hess Ranch: (adjoins Anthology on south) 1,536 acres, includes 3,379 units, parks and schools
- Price: \$3,307,000.

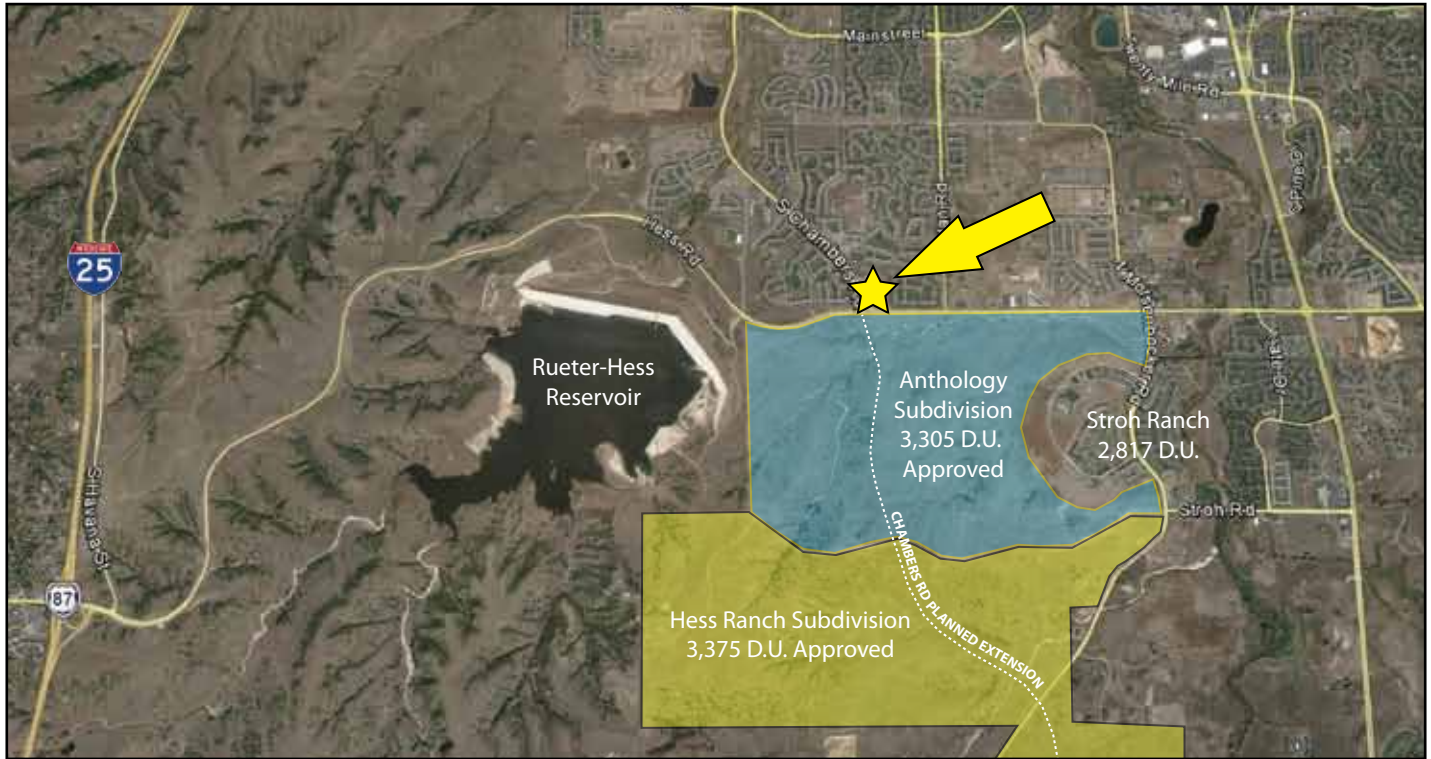
**Jack Hanlon**

Sr. Vice President  
(720) 306-6026

JHanlon@FullerRE.com







### UTILITIES MAP - WATER & SEWER

