

FOR SALE

# PORT ORCHARD LAND

5230 SIDNEY ROAD SW :: PORT ORCHARD, WA



## AVAILABLE FOR SALE OR BUILD-TO-SUIT

- 9.69 Acres

## ZONING

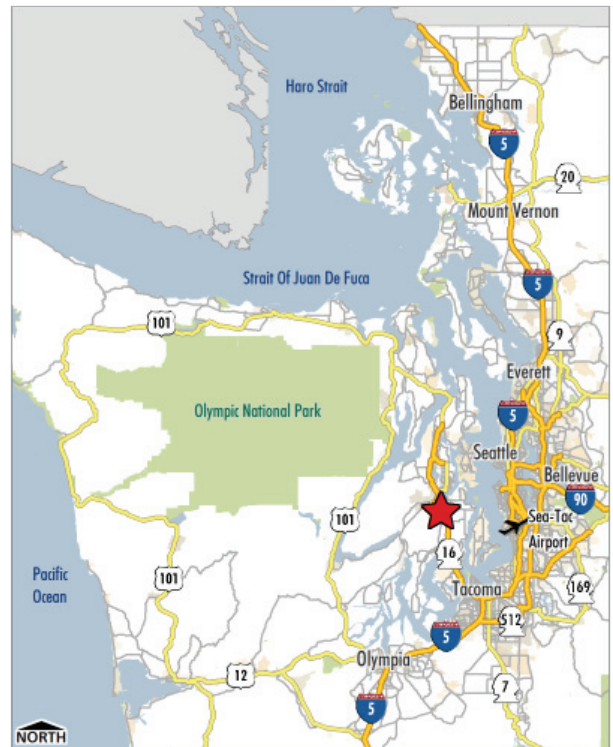
- HTC (Kitsap County)

## OPPORTUNITIES FOR

- Grocer or restaurant
- Multifamily
- Senior Housing
- Miscellaneous retail
- Mini storage

## 2010 Est. Demographics 3 Miles

POPULATION	25,790
GROWTH (2010–2015)	2.38%
HOUSEHOLDS	9,460
AVG. HOUSEHOLD INCOME	\$68,474



FOR MORE  
INFORMATION  
PLEASE  
CONTACT

**Joe Baldwin**  
206.442.2741  
joe.baldwin@cbre.com  
www.cbre.com/joe.baldwin

**CBRE**

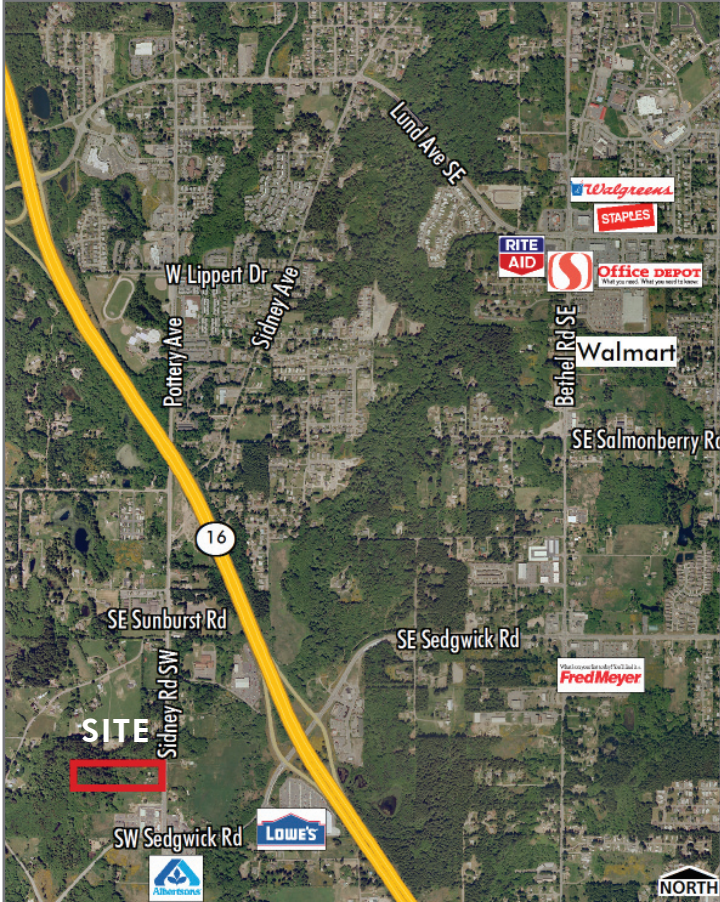
FOR SALE

# PORT ORCHARD LAND

5230 SIDNEY ROAD SW :: PORT ORCHARD, WA



## SITE LOCATION



## PLAT MAP



FOR MORE  
INFORMATION  
PLEASE  
CONTACT

**Joe Baldwin**  
206.442.2741  
joe.baldwin@cbre.com  
www.cbre.com/joe.baldwin